

January 17, 2012

To whom it may concern

Sumitomo Mitsui Trust Holdings, Inc.
(Securities Code: 8309 TSE, OSE, NSE)

**Notice regarding Change of Corporate Organization of
Sumitomo Mitsui Trust Holdings, Inc.**

Sumitomo Mitsui Trust Holdings, Inc. (President: Kazuo Tanabe; hereinafter “SMTH”) hereby announces that SMTH has decided to change its corporate organization as of April 1, 2012, based on the establishment of Sumitomo Mitsui Trust Bank, Limited resulting from the planned merger (hereinafter “the Merger”) among SMTH’s wholly-owned subsidiaries, The Chuo Mitsui Trust and Banking Company, Limited, Chuo Mitsui Asset Trust and Banking Company, Limited, and The Sumitomo Trust and Banking Co., Ltd, effective on April 1, 2012, in the manner described below.

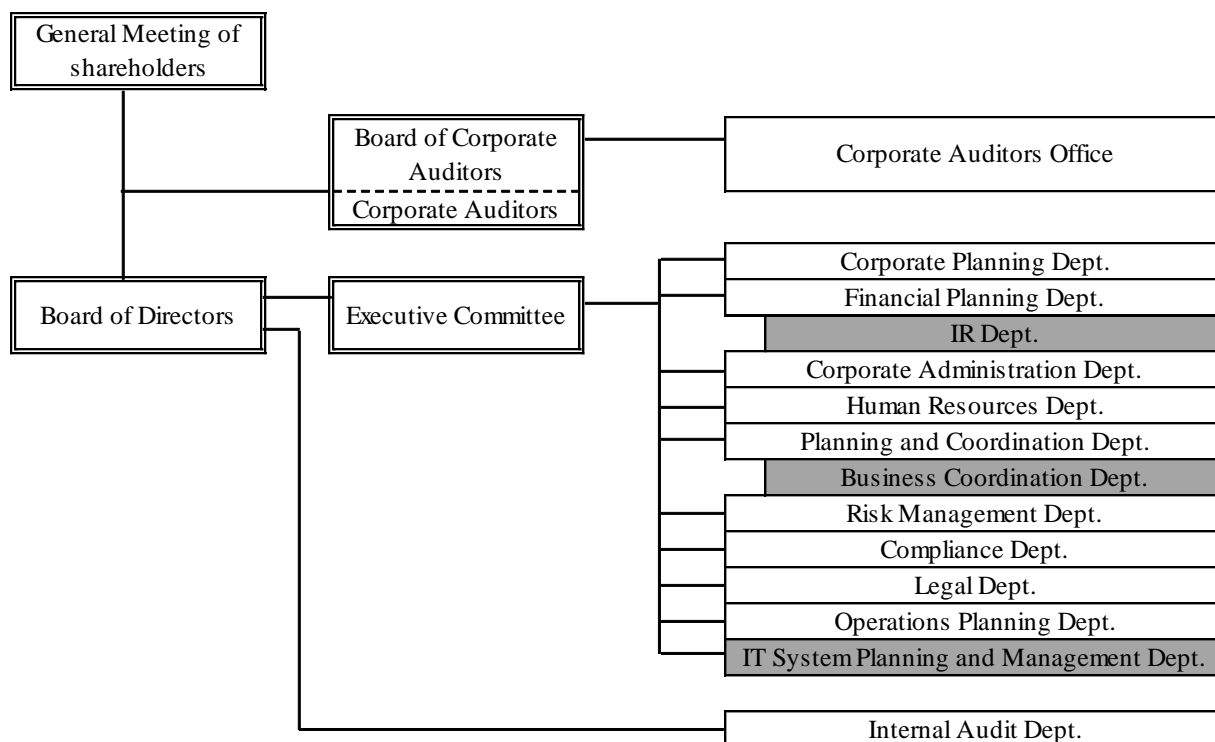
The Merger is subject to the approval of the relevant authorities.

SMTH has established its corporate organization as a holding company to focus on the management of the business operations, and set the followings as its key functions since the date of its establishment on April 1, 2011:

(i) Formulating group management strategy, (ii) Allocation of management resources, (iii) Monitoring administration of business activities, (iv) Supervising risk management, (v) Supervising compliance management, (vi) Managing internal auditing.

SMTH will change its corporate organization to enhance its functions mentioned above in accordance with the planned merger among 3 trust bank subsidiaries of SMTH effective on April 1, 2012.

Corporate Organization of SMTH (Planned as of April 1, 2012)
(Shaded areas in the diagram below indicate changed organizations.)



End

For further information, please contact:
IR Office, Sumitomo Mitsui Trust Holdings, Inc.
Telephone: +81-3-3286-8354
Facsimile: +81-3-3286-4654