

April 2, 2012

(To whom it may concern)

Sumitomo Mitsui Trust Holdings, Inc.  
Sumitomo Mitsui Trust Bank, Limited

**Greetings concerning the establishment of Sumitomo Mitsui Trust Bank, Limited**

First of all, we would like to thank all stakeholders for continued invaluable support for us.

As of April 1, 2012, Sumitomo Mitsui Trust Group has established a new trust bank as “Sumitomo Mitsui Trust Bank, Limited” through the merger of three subsidiary trust banks, following the establishment of Sumitomo Mitsui Trust Holdings, Inc. as a holding company in April, 2011.

With the establishment of Sumitomo Mitsui Trust Bank, Limited which has the largest scale in most of the major business areas in trust banking industry, we will swiftly accelerate our efforts to build its new business model to be able to create the unique value-added services along with the brand of “The Trust Bank” with firm presence not only in the trust banking industry but also in the financial industry.

Under the current unpredictable situation with concerns for the future social and economic conditions both in Japan and overseas, and with the background of decreasing birthrate, aging population and the further globalization in addition to the influence from The Great East Japan Earthquake, our clients are facing increasingly advanced and complex issues. Considering this situation, Sumitomo Mitsui Trust Group will make even more effort to better serve our clients.

Sumitomo Mitsui Trust Group will provide comprehensive solution that corresponds to our clients’ needs with significant expertise and wide range of capabilities utilizing our “Trustee-ness” and the uniqueness of Sumitomo Mitsui Trust Group, along with continuous enhancement of our compliance system to fulfill further social responsibility and public mission.

We, the management and employees of the new trust bank group, will work as a team to meet the expectations of our stakeholders.

We look forward to your continuing support.

Sumitomo Mitsui Trust Holdings, Inc.  
Representative Director, President  
Kunitaro Kitamura  
Sumitomo Mitsui Trust Bank, Limited  
Representative Director, President  
Hitoshi Tsunekage

For further information, please contact

IR Office, Sumitomo Mitsui Trust Holdings, Inc.

Telephone: +81-3-3286-8354 Fax: +81-3-3286-4654

## Outline of Sumitomo Mitsui Trust Bank, Limited (As of April 1, 2012)

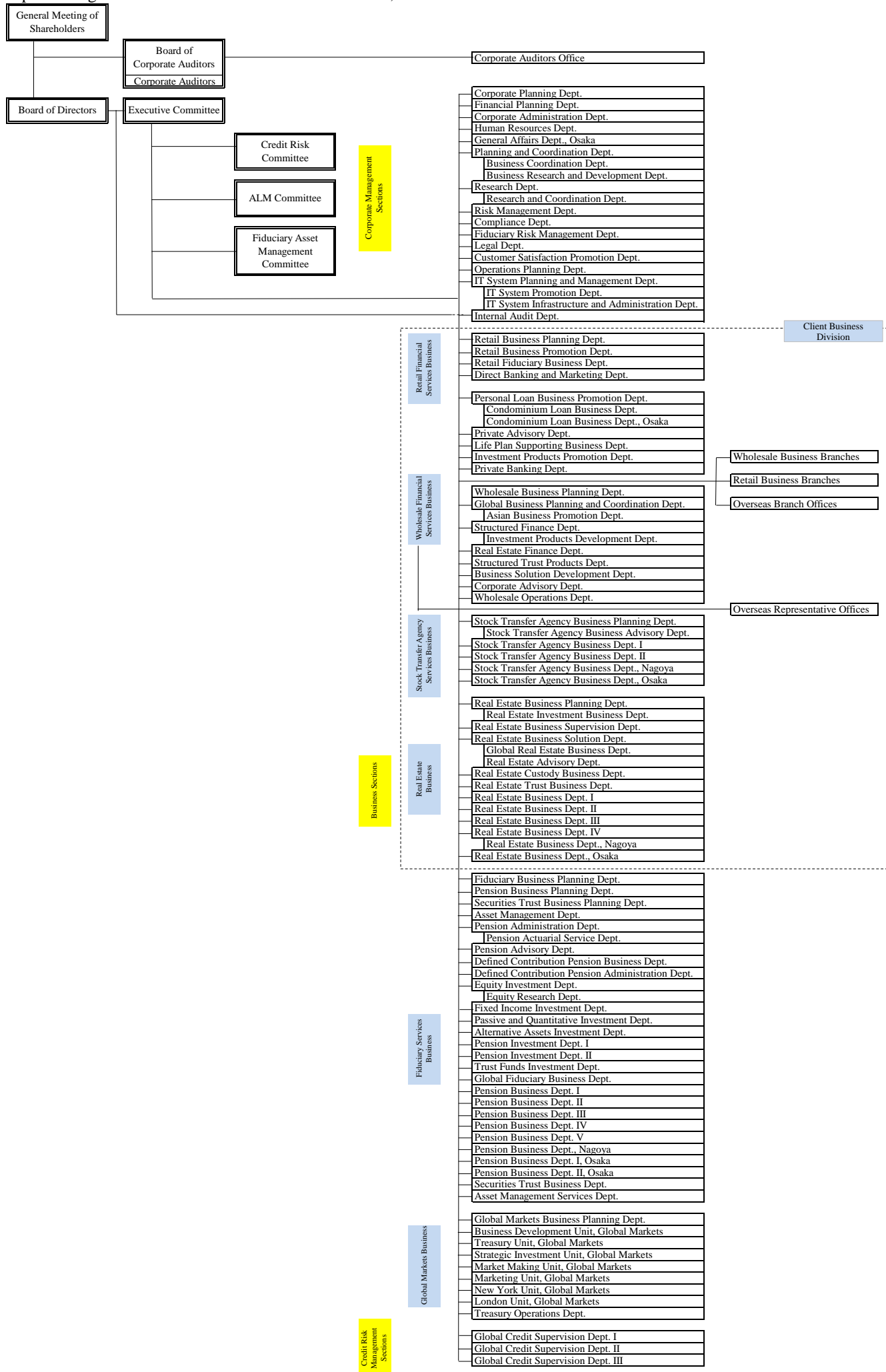
1. Registered Trade Name	Sumitomo Mitsui Trust Bank, Limited	
2. Location of Head Office	1-4-1 Marunouchi, Chiyoda-ku, Tokyo	
3. Capital stock	JPY 342.0 billion	
4. Main Business Activities	Trust business and banking business	
5. Board of Directors and Corporate Auditors	Representative Director, Chairman	Kunitaro Kitamura
	Representative Director, President	Hitoshi Tsunekage
	Representative Director, Deputy Chairman	Jun Okuno
	Representative Director, Deputy Chairman	Kiyoshi Mukohara
	Representative Director, Deputy President	Akio Otsuka
	Representative Director, Deputy President	Nobuo Iwasaki
	Director, Senior Managing Executive Officer	Takashi Kamikanda
	Director, Senior Managing Executive Officer	Shunichi Sakata
	Director, Senior Managing Executive Officer	Rikiya Hattori
	Director, Senior Managing Executive Officer	Sumikazu Tsutsui
	Director, Managing Executive Officer	Katsuhiko Kudo
	Director, Managing Executive Officer	Tetsuo Ohkubo
	Director, Managing Executive Officer	Yukihiro Kitano
	Director, Managing Executive Officer	Tomoyuki Kiyotsune
	Director, Managing Executive Officer	Tsuyoshi Saito
	Director, Managing Executive Officer	Toru Takakura
	Senior Corporate Auditor	Teruhiko Sugita
	Senior Corporate Auditor	Tetsuo Amano
	Corporate Auditor	Yasuhiro Wakasa
	Corporate Auditor	Tatsuya Tsuboi
	Corporate Auditor (*1)	Hitoshi Maeda
	Corporate Auditor (*1)	Hiroyuki Nakanishi
	Corporate Auditor (*1)	Toshio Hoshino
	Corporate Auditor (*1)	Yasuhiko Takano
6. Net Assets	JPY 1,932.8 billion (*2)	
7. Total Assets	JPY 33,303.2 billion (*2)	
8. Balance of Trust Account	JPY 122,188.1 billion (*2)	
9. Domestic Branches	153 (118 Branches, 35 Consulting office, etc.)	
10. Overseas Branches	9 (4 Branches, 5 Representative offices)	

(\*1) Messrs. Hitoshi Maeda, Hiroyuki Nakanishi, Toshio Hoshino and Yasuhiko Takano are external auditors defined in Article2, Item16 of the Companies Act.

(\*2) Simple sum of The Chuo Mitsui Trust and Banking Company, Limited, Chuo Mitsui Asset Trust and Banking Company, Limited, and The Sumitomo Trust and Banking Co., Ltd. as of September 30, 2011.

(On a non-consolidated basis)

Corporate Organization of Sumitomo Mitsui Trust Bank, Limited



## Signature



# SUMITOMO MITSUI TRUST BANK

## Symbol Mark



The symbol mark features “Future Bloom” representing the vision of Sumitomo Mitsui Trust Group, which is “to generate new value through the combination of significant expertise and comprehensive capabilities, and to help the future of our clients and society bloom”.

The four clear petals show our “Mission” to each stakeholder of clients, society, shareholders and employees. The four colors of petals represent our Codes of Conduct (“Value”): “Truthfulness and Loyalty” (natural green), “Dedication and Development” (golden orange), “Trust and Creativity” (blue green), and “Self-help and Self-discipline” (sky blue).

## Corporate Color



The corporate color is “Future Blue”, which represents the integration of the sense of value that the symbol mark implies, and evokes the closeness and the future.