

Board of Directors and Executive Officers (As of July 1, 2012)

Representative Director, Chairman Hitoshi Tsunekage	Representative Director, Director Kiyoshi Mukohara	Senior Managing Executive Officer Takashi Kamikanda	Managing Executive Officer Tsuyoshi Saito
Representative Director, President Kunitaro Kitamura	Senior Corporate Auditor Teruhiko Sugita	Managing Executive Officer Katsuhiko Kudo	Managing Executive Officer Tadashi Nishimura
Representative Director, Deputy President Akio Otsuka	Senior Corporate Auditor Tetsuo Amano	Managing Executive Officer Yukihiko Kitano	Managing Executive Officer Toru Takakura
Representative Director, Deputy President Nobuo Iwasaki	Corporate Auditor Hitoshi Maeda*	Managing Executive Officer Yoshikazu Tanaka	Executive Officer Ichiro Kokubo
Director, Managing Executive Officer Shinji Ochiai	Corporate Auditor Hiroyuki Nakanishi*	Managing Executive Officer Akihiko Shirayama	Executive Officer Toshihiro Kitanobou
Director, Managing Executive Officer Tetsuo Ohkubo	Corporate Auditor Toshio Hoshino*	Managing Executive Officer Yoshiaki Koshimura	Executive Officer Yasumi Nose
Representative Director, Director Jun Okuno	Corporate Auditor Yasuhiko Takano*	Managing Executive Officer Tomoyuki Kiyotsune	Executive Officer Atsushi Kaibara

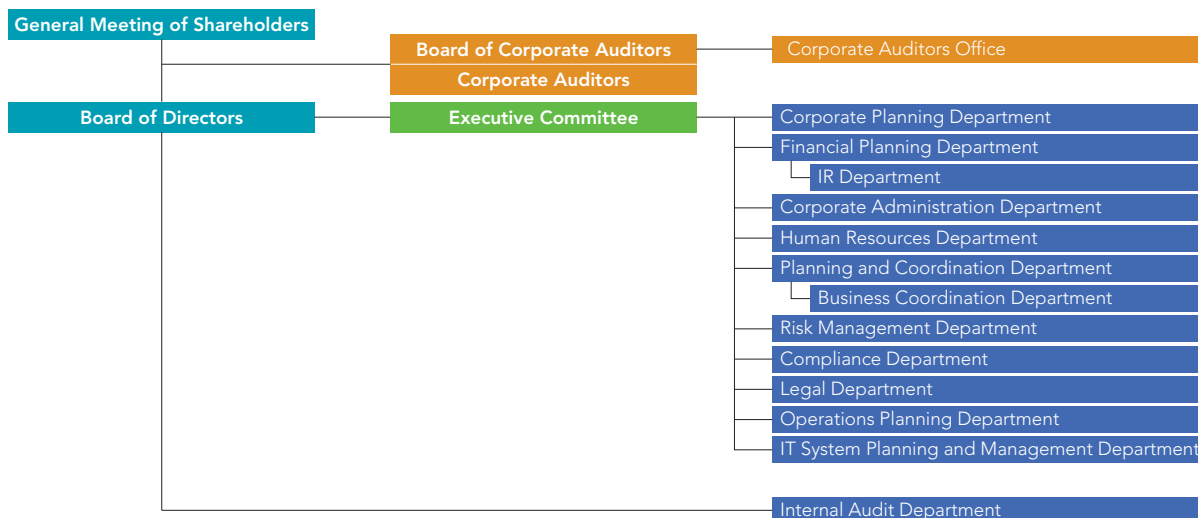
* External Auditor stated in Article 2 Item 16 of Companies Act.

Employees (As of March 31, 2012)

Category	March 31, 2012	March 31, 2011
Number of Employees	159	115
Average Age	42 years, 0 months	41 years, 5 months
Average Length of Employment	16 years, 10 months	16 years, 6 months
Average Annual Salary	¥ 11,525 thousand	¥ 10,420 thousand

Notes: 1. The number of employees indicates total personnel, etc., excluding employees seconded to other companies and temporary and part-time staff.
 2. Employees include those seconded from the former Chuo Mitsui Trust and Banking Company, Limited, former Chuo Mitsui Asset Trust and Banking Company, Limited or the former Sumitomo Trust and Banking Co., Ltd. and the average length of employment includes years of employment at their own companies.
 3. Average annual salary includes bonus and extra payment.

Organizational Chart (As of April 1, 2012)



Subsidiaries and Affiliated Companies (As of June 30, 2012)

Japan

Name	Location	Date of Establishment	Paid-in Capital (Millions)	Scope of Business	Ownership (%)	SMTH Group Ownership (%)
Sumitomo Mitsui Trust Bank, Limited	1-4-1, Marunouchi, Chiyoda-ku, Tokyo	July 28, 1925	¥ 342,037	Trust and Banking Business	100.0	—
Sumitomo Mitsui Trust Asset Management Co., Ltd.	33-1, Shiba 3-chome, Minato-ku, Tokyo	November 1, 1986	¥ 300	Investment Management Business, Investment Advisory and Agency Business	100.0	—
Sumitomo Mitsui Trust Research Institute Co., Ltd.	3-13, Toranomon 4-chome, Minato-ku, Tokyo	July 1, 1988	¥ 300	Survey, Research, Consulting, Investment Advisory Business	100.0	—
Sumitomo Mitsui Trust Capital Co., Ltd.	5-1, Nihonbashi-muromachi 4-chome, Chuo-ku, Tokyo	March 1, 2000	¥ 1,247	Securities Investment Business	100.0	—
Japan Trustee Services Bank, Ltd.	Harumi Island Triton Square Tower Y 8-11, Harumi 1-chome, Chuo-ku, Tokyo	June 20, 2000	¥ 51,000	Trust and Banking Business	66.6	—

Overseas

Name	Location	Date of Establishment	Paid-in Capital (Millions)	Scope of Business	Ownership (%)	SMTH Group Ownership (%)
MTH Preferred Capital 1 (Cayman) Limited	PO Box 309, Ugland House, Grand Cayman KY1-1104, Cayman Islands	March 11, 2002	¥ 29,200	Finance Business	100.0	—
MTH Preferred Capital 3 (Cayman) Limited	PO Box 309, Ugland House, Grand Cayman KY1-1104, Cayman Islands	March 10, 2003	¥ 31,700	Finance Business	100.0	—
MTH Preferred Capital 4 (Cayman) Limited	PO Box 309, Ugland House, Grand Cayman KY1-1104, Cayman Islands	March 10, 2004	¥ 10,800	Finance Business	100.0	—
MTH Preferred Capital 5 (Cayman) Limited	PO Box 309, Ugland House, Grand Cayman KY1-1104, Cayman Islands	February 8, 2007	¥ 33,700	Finance Business	100.0	—
CMTH Preferred Capital 6 (Cayman) Limited	PO Box 309, Ugland House, Grand Cayman KY1-1104, Cayman Islands	January 29, 2008	¥ 42,700	Finance Business	100.0	—
CMTH Preferred Capital 7 (Cayman) Limited	PO Box 309, Ugland House, Grand Cayman KY1-1104, Cayman Islands	November 28, 2008	¥ 41,600	Finance Business	100.0	—