

Board of Directors and Executive Officers (As of July 1, 2012)

Representative Director, Chairman Kunitaro Kitamura	Corporate Auditor Yasuhiro Wakasa	Managing Executive Officer Masashi Hirose	Executive Officer Toshiya Nishino
Representative Director, President Hitoshi Tsunekage	Corporate Auditor Tatsuya Tsuboi	Managing Executive Officer Akihiko Shirayama	Executive Officer Yasumi Nose
Representative Director, Deputy Chairman Jun Okuno	Corporate Auditor Hitoshi Maeda*	Managing Executive Officer Hideaki Kosone	Executive Officer Yutaka Nishida
Representative Director, Deputy Chairman Kiyoshi Mukohara	Corporate Auditor Hiroyuki Nakanishi*	Managing Executive Officer Yoshiaki Koshimura	Executive Officer Taichi Kano
Representative Director, Deputy President Akio Otsuka	Corporate Auditor Toshio Hoshino*	Managing Executive Officer Jiro Araumi	Executive Officer Koichi Onaka
Representative Director, Deputy President Nobuo Iwasaki	Corporate Auditor Yasuhiko Takano*	Managing Executive Officer Masahiro Tsuchiya	Executive Officer Hiroshi Ohno
Director, Senior Managing Executive Officer Takashi Kamikanda	Managing Executive Officer Hidehiko Asai	Executive Officer Satoru Abe	Executive Officer Hitoshi Sato
Director, Senior Managing Executive Officer Shunichi Sakata	Managing Executive Officer Naoya Syouji	Executive Officer Ichiro Kokubo	Executive Officer Hiroshi Takahashi
Director, Senior Managing Executive Officer Rikiya Hattori	Managing Executive Officer Taro Kiritani	Executive Officer Keiji Tanaka	Executive Officer Atsushi Kaibara
Director, Senior Managing Executive Officer Sumikazu Tsutsui	Managing Executive Officer Kouji Nohara	Executive Officer Hiroyuki Yamada	Executive Officer Toshiyuki Ishiuchi
Director, Managing Executive Officer Katsuhiko Kudo	Managing Executive Officer Youichi Nakae	Executive Officer Toshio Yamasaki	Executive Officer Akira Yokota
Director, Managing Executive Officer Tetsuo Ohkubo	Managing Executive Officer Takuya Miyazaki	Executive Officer Toshihiro Kitanobou	Executive Officer Seiji Iwakuma
Director, Managing Executive Officer Yukihiko Kitano	Managing Executive Officer Yasuyuki Yagi	Executive Officer Mutsumi Watanabe	Executive Officer Junichi Yoneda
Director, Managing Executive Officer Tomoyuki Kiyotsune	Managing Executive Officer Masaru Hashimoto	Executive Officer Mashiba Fujita	Executive Officer Satoshi Kamiya
Director, Managing Executive Officer Tsuyoshi Saito	Managing Executive Officer Koji Yosomiya	Executive Officer Tadao Umezawa	Executive Officer Kengo Noguchi
Director, Managing Executive Officer Toru Takakura	Managing Executive Officer Jun Sasaki	Executive Officer Yuzuru Kawaguchi	Executive Officer Kenji Kaiya
Senior Corporate Auditor Teruhiko Sugita	Managing Executive Officer Hideki Hiraki	Executive Officer Kazuhiro Sekine	Executive Officer Naohiro Tanaka
Senior Corporate Auditor Tetsuo Amano	Managing Executive Officer Yoshikazu Tanaka	Executive Officer Akira Kamiyo	Executive Officer Hidehito Kamisawa

* External Auditor stated in Article 2 Item 16 of Companies Act.

Employees (As of April 1, 2012)

Category	March 31, 2012
Number of Employees	13,427

Note: The number of employees indicates total personnel, etc., excluding employees seconded to other companies and temporary and part-time staff.

<Reference> Disclosure by former banks The Former Chuo Mitsui Trust and Banking Company, Limited

Category	March 31, 2012	March 31, 2011
Number of Employees	6,438	6,376
Average Age	42 years, 11 months	42 years, 6 months
Average Length of Employment	11 years, 6 months	11 years, 0 months
Average Annual Salary	¥ 6,203 thousand	¥ 6,045 thousand

Notes: 1. The number of employees indicates total personnel, etc., excluding employees seconded to other companies and temporary and part-time staff.
2. Average annual salary includes bonus and extra payment.

Former Chuo Mitsui Asset Trust and Banking Company, Limited

Category	March 31, 2012	March 31, 2011
Number of Employees	642	651
Average Age	40 years, 10 months	39 years, 10 months
Average Length of Employment	15 years, 5 months	14 years, 9 months
Average Annual Salary	¥ 9,204 thousand	¥ 8,941 thousand

Notes: 1. The number of employees indicates total personnel, etc., excluding employees seconded to other companies and temporary and part-time staff.
2. The average length of employment of the employees transferred from the former Chuo Mitsui Trust and Banking Company, Limited includes service years at the company.
3. Average annual salary includes bonus and extra payment.

The Former Sumitomo Trust and Banking Co., Ltd.

Category	March 31, 2012	March 31, 2011
Number of Employees	5,933	6,085
Average Age	39 years, 8 months	39 years, 1 months
Average Length of Employment	12 years, 2 months	11 years, 8 months
Average Annual Salary	¥ 7,576 thousand	¥ 7,417 thousand

Notes: 1. The number of employees indicates total personnel, etc., excluding employees seconded to other companies and temporary and part-time staff.
2. Average annual salary includes bonus and extra payment.

Organizational Chart (As of April 1, 2012)

Top Message
Top Interview

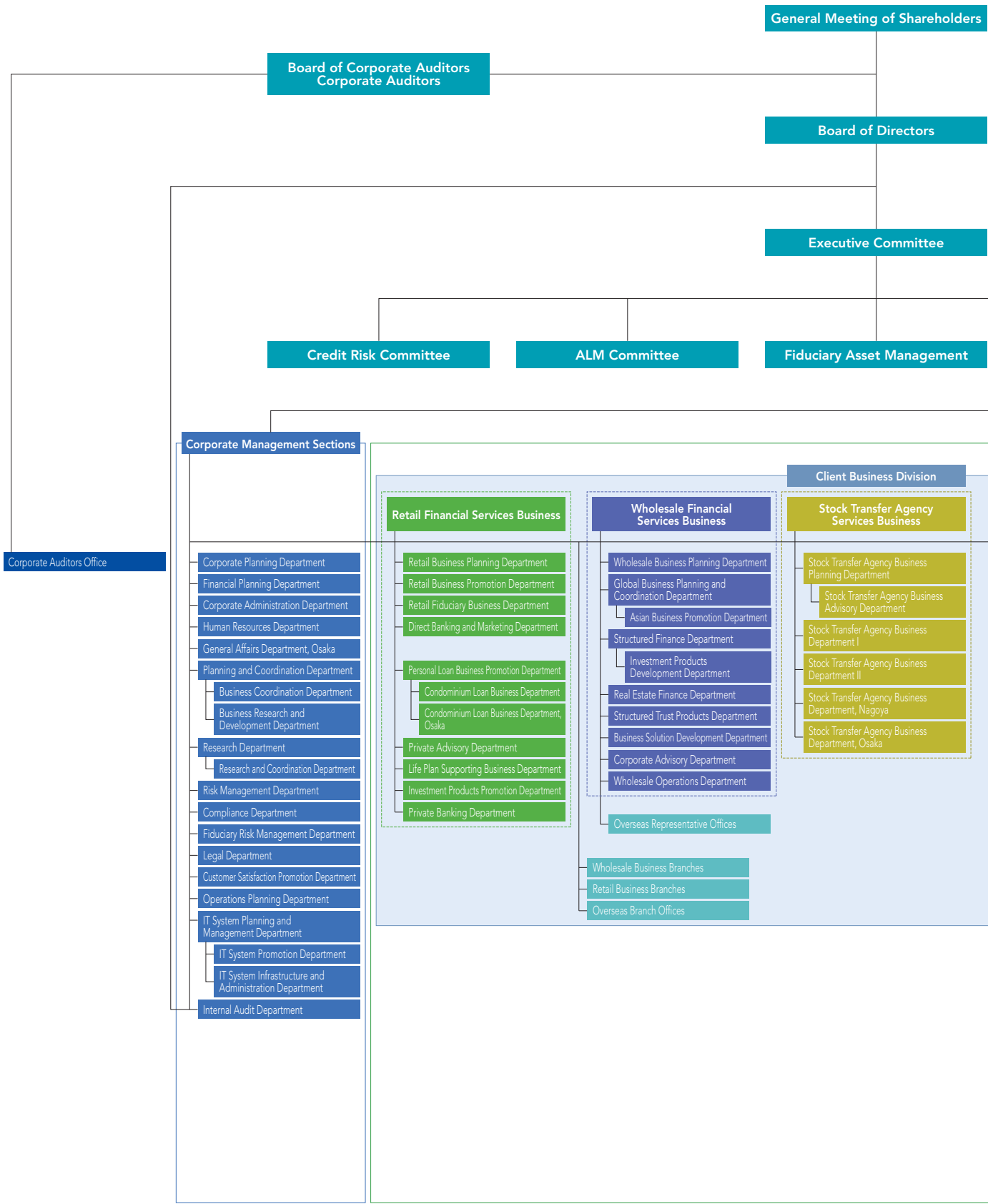
Financial Highlights

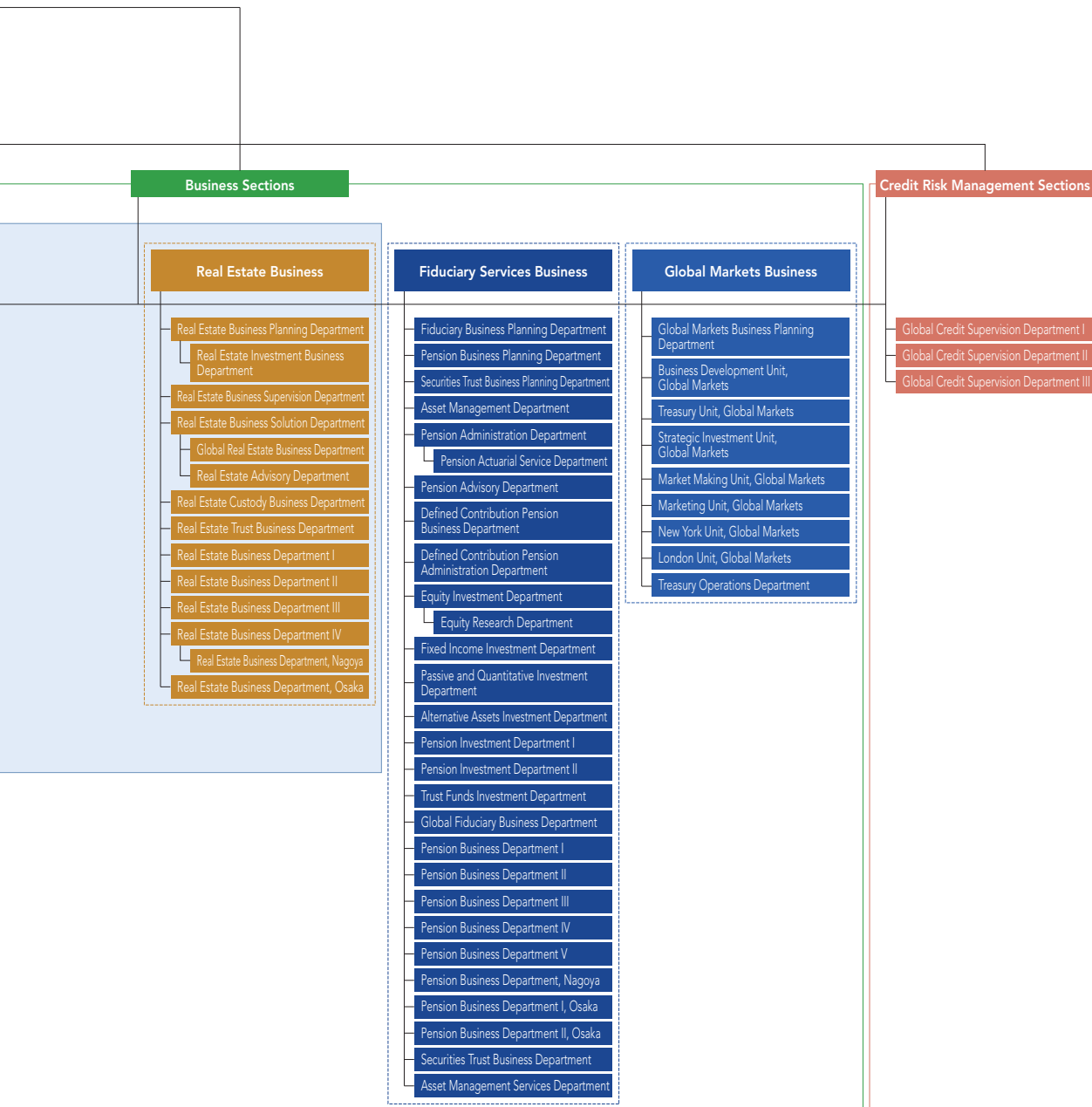
Special Feature

Review of Operations

Management Structure

Corporate Data





Branches (As of June 30, 2012)

●: The former Chuo Mitsui Trust and Banking Company, Limited ◆: The former Sumitomo Trust and Banking Co., Ltd.

Hokkaido, Tohoku

- **Sapporo Branch**
3, Kita 1-jo Nishi 3-chome, Chuo-ku, Sapporo,
Hokkaido 060-0001, Japan
- ◆ **Sapporo-Chuo Branch**
3, Kita 1-jo Nishi 3-chome, Chuo-ku, Sapporo,
Hokkaido 060-0001, Japan
- **Consulting Plaza Sapporo,
Sapporo Branch**
3, Kita 1-jo Nishi 3-chome, Chuo-ku, Sapporo,
Hokkaido 060-0001, Japan
- ◆ **Sendai Branch*1**
2-10, Chuo 2-chome, Aoba-ku, Sendai,
Miyagi 980-0021, Japan
- **Sendai-Aoba Branch*1**
3-3, Chuo 3-chome, Aoba-ku, Sendai,
Miyagi 980-0021, Japan

Tokyo

- ◆ **Tokyo Business Department**
4-1, Marunouchi 1-chome, Chiyoda-ku,
Tokyo 100-8233, Japan
- **Nihonbashi Business Department**
1-1, Nihonbashi-muromachi 2-chome, Chuo-ku,
Tokyo 103-0022, Japan
- ◆ **Tokyo-Chuo Branch**
3-1, Yaesu 2-chome, Chuo-ku, Tokyo 104-8476, Japan
- **Shinbashi Branch**
20-1, Shinbashi 2-chome, Minato-ku,
Tokyo 105-0004, Japan
- ◆ **Toranomon Consulting Office
(Toranomon Sub-Branch,
Tokyo Business Department)**
7-1, Nishi Shinbashi 1-chome, Minato-ku,
Tokyo 105-0003, Japan
- **Shiba Business Department**
33-1, Shiba 3-chome, Minato-ku, Tokyo 105-8574, Japan
- **Shinjuku-Nishiguchi Branch**
1-4, Nishi Shinjuku 1-chome, Shinjuku-ku,
Tokyo 160-0023, Japan
- ◆ **Shinjuku Branch**
26-11, Shinjuku 3-chome, Shinjuku-ku,
Tokyo 160-0022, Japan
- **Consulting Plaza Shinjuku-Nishiguchi,
Shinjuku-Nishiguchi Branch**
1-4, Nishi Shinjuku 1-chome, Shinjuku-ku,
Tokyo 160-0023, Japan
- **Ueno Branch**
19-10, Ueno 1-chome, Taito-ku, Tokyo 110-0005, Japan
- ◆ **Ueno-Chuo Branch**
20-8, Ueno 1-chome, Taito-ku, Tokyo 110-0005, Japan
- **Omori Branch**
1-1, Sannou 2-chome, Ota-ku, Tokyo 143-0023, Japan
- **Sangenjaya Branch**
1-1, Taishidou 4-chome, Setagaya-ku,
Tokyo 154-0004, Japan
- ◆ **Futako-Tamagawa Consulting Office
(Futako-Tamagawa Sub-Branch,
Shibuya-Chuo Branch)**
22-12, Tamagawa 2-chome, Setagaya-ku,
Tokyo 158-0094, Japan
- **Consulting Plaza Seijo
(Seijo Sub-Branch,
Shinjuku-Nishiguchi Branch)**
5-34, Seijo 6-chome, Setagaya-ku,
Tokyo 157-0066, Japan
- **Consulting Plaza Chitose-Karasuyama**
12-5, Minami Karasuyama 4-chome, Setagaya-ku,
Tokyo 157-0062, Japan
- ◆ **i-Station Chitose-Karasuyama
(Chitose Karasuyama Sub-Branch,
Shinjuku Branch)**
4-31, Minami Karasuyama 6-chome, Setagaya-ku,
Tokyo 157-0062, Japan
- **Shibuya Branch**
2-2, Dougenzaka 1-chome, Shibuya-ku,
Tokyo 150-0043, Japan
- ◆ **Shibuya-Chuo Branch**
22-3, Jinnan 1-chome, Shibuya-ku,
Tokyo 150-0041, Japan
- **Consulting Plaza Jiyugaoka
(Jiyugaoka Sub-Branch, Shibuya Branch)**
12-21, Jiyugaoka 2-chome, Meguro-ku,
Tokyo 152-0035, Japan
- **Nakano Branch**
62-5, Nakano 5-chome, Nakano-ku,
Tokyo 164-0001, Japan
- **Ogikubo Branch**
16-16, Kamiogi 1-chome, Suginami-ku,
Tokyo 167-0043, Japan
- **Ikebukuro Branch**
15-9, Nishi Ikebukuro 1-chome, Toshima-ku,
Tokyo 171-0021, Japan
- ◆ **Ikebukuro-Higashiguchi Branch**
41-7, Higashi Ikebukuro 1-chome, Toshima-ku,
Tokyo 170-0013, Japan
- **Shakujii Branch**
14-1, Shakujii-cho 2-chome, Nerima-ku,
Tokyo 177-0041, Japan
- **Kichijoji Branch**
14-9, Kichijoji Hon-cho 1-chome, Musashino,
Tokyo 180-0004, Japan
- ◆ **Kichijoji-Chuo Branch**
2-14, Kichijoji Hon-cho 2-chome, Musashino,
Tokyo 180-0004, Japan
- **Tachikawa Branch**
6-1, Akebono-cho 2-chome, Tachikawa,
Tokyo 190-0012, Japan
- ◆ **Tachikawa-Kitaguchi Consulting Office
(Tachikawa-Kitaguchi Sub-Branch,
Kichijoji-Chuo Branch)**
4-5, Akebono-cho 2-chome, Tachikawa,
Tokyo 190-0012, Japan
- **Hachioji Branch**
9-1, Asahi-cho, Hachioji, Tokyo 192-0083, Japan
- ◆ **Hachioji-Ekimaie Branch**
1-4, Asahi-cho, Hachioji, Tokyo 192-0083, Japan
- **Machida Branch**
3-4, Haramachida 6-chome, Machida,
Tokyo 194-0013, Japan
- **Tama-Sakuragaoka Branch**
1-5, Sekido 1-chome, Tama, Tokyo 206-0011, Japan
- ◆ **Seiseki-Sakuragaoka Consulting Office
(Seiseki-Sakuragaoka Sub-Branch,
Shinjuku Branch)**
7-5, Sekido 1-chome, Tama, Tokyo 206-0011, Japan
- **Consulting Plaza Tama-Center
(Tama-Center Sub-Branch,
Tama-Sakuragaoka Branch)**
44, Ochiai 1-chome, Tama, Tokyo 206-0033, Japan

*1 Sendai Branch and Sendai-Aoba Branch will move into a new office, and operate there from September 18 (Tuesday), 2012.
(New address: 1-7, Chuo 2-chome, Aoba-ku, Sendai, Miyagi 980-0021, Japan)

Kanto

- **Urawa Branch**
12-1, Takasago 1-chome, Urawa-ku,
Saitama 330-0063, Japan
- **Consulting Plaza Urawa, Urawa Branch**
12-1, Takasago 1-chome, Urawa-ku,
Saitama 330-0063, Japan
- ◆ **Omiya Branch**
6-1, Daimon-cho 1-chome, Omiya-ku,
Saitama 330-0846, Japan
- **Omiya-Ekimae Branch**
1, Daimon-cho 1-chome, Omiya-ku,
Saitama 330-0846, Japan
- **Tokorozawa Branch**
3-5, Hiyoshi-cho, Tokorozawa, Saitama 359-8691, Japan
- ◆ **Tokorozawa-Ekimae Branch**
12-1, Hiyoshi-cho, Tokorozawa, Saitama 359-1123, Japan
- **Consulting Plaza Fujimino
(Fujimino Sun-Branch, Ikebukuro Branch)**
1-1, Fujimino Higashi 1-chome, Fujimi,
Saitama 354-0036, Japan
- ◆ **Koshigaya Branch**
14-22, Yayoi-cho, Koshigaya, Saitama 343-0816, Japan
- **Sugito Branch**
13-12, Sugito 2-chome, Sugito-machi, Kitakatsushika-gun,
Saitama 345-0036, Japan
- **Chiba Branch**
1-16, Fujimi 1-chome, Chuo-ku, Chiba 260-0015, Japan
- ◆ **Chiba-Ekimae Branch**
1-15, Fujimi 1-chome, Chuo-ku, Chiba 260-0015, Japan
- **Funabashi Branch**
3-1, Hon-cho 1-chome, Funabashi, Chiba 273-0005, Japan
- ◆ **Tsudanuma Branch**
14-5, Maebara Nishi 2-chome, Funabashi,
Chiba 274-0825, Japan
- **Consulting Plaza Tsudanuma-Ekimae*2
(Tsudanuma-Ekimae Sub-Branch,
Funabashi Branch)**
7-1, Yatsu 7-chome, Narashino, Chiba 275-0026, Japan
- **Matsudo Branch**
2-1, Hon-cho, Matsudo, Chiba 271-0091, Japan
- ◆ **Kashiwa Consulting Office
(Kashiwa Sub-Branch, Ueno-Chuo Branch)**
1-2, Asahi-cho 1-chome, Kashiwa, Chiba 277-0852, Japan
- **Consulting Plaza Kashiwa-Ekimae*3
(Kashiwa-Ekimae Sub-Branch,
Matsudo Branch)**
1-11, Kashiwa 1-chome, Kashiwa, Chiba 277-0005, Japan
- **Yachiyo Branch**
3-1, Yachiyodai Minami 1-chome, Yachiyo,
Chiba 276-0033, Japan
- **Consulting Plaza Shin-Urayasu
(Shin-Urayasu Sub-Branch,
Nihonbashi Business Department)**
5-1, Irifune 1-chome, Urayasu, Chiba 279-0012, Japan
- **Yokohamaeki-Nishiguchi Branch**
6-31, Minami Saiwai 1-chome, Nishi-ku, Yokohama,
Kanagawa 220-0005, Japan
- ◆ **Yokohama Branch**
14-10, Minami Saiwai 1-chome, Nishi-ku, Yokohama,
Kanagawa 220-0005, Japan
- **Consulting Plaza Yokohamaeki-Nishiguchi
(Yokohama 1st Building Sub-Branch,
Yokohamaeki-Nishiguchi Branch)**
6-1, Kita Saiwai 1-chome, Nishi-ku, Yokohama,
Kanagawa 220-0004, Japan
- **Futamatagawa Sub-Branch
(Futamatagawa Sub-Branch,
Yokohamaeki-Nishiguchi Branch)**
3-2, Futamatagawa 1-chome, Asahi-ku, Yokohama,
Kanagawa 241-0821, Japan
- **Consulting Plaza Hiyoshi
(Hiyoshi Sub-Branch,
Yokohamaeki-Nishiguchi Branch)**
1-1, Hiyoshi 2-chome, Kohoku-ku, Yokohama,
Kanagawa 223-0061, Japan
- **Tama-Plaza Branch**
15-8, Utsukushigaoka 2-chome, Aoba-ku, Yokohama,
Kanagawa 225-0002, Japan
- ◆ **Aobadai Consulting Office
(Aobadai Sub-Branch, Shibuya-Chuo Branch)**
9-2, Aobadai 2-chome, Aoba-ku, Yokohama,
Kanagawa 227-0062, Japan
- **Consulting Plaza Aobadai-Ekimae*4
(Aobadai-Ekimae Sub-Branch,
Tama-Plaza Branch)**
7-3, Aobadai 1-chome, Aoba-ku, Yokohama,
Kanagawa 227-0062, Japan
- **Consulting Plaza Kohoku
(Kohoku Sub-Branch, Tama-Plaza Branch)**
1-3, Nakagawa Chuo 1-chome, Tsuzuki-ku, Yokohama,
Kanagawa 224-0003, Japan
- ◆ **Konandai Branch**
15-2-102, Konandai 3-chome, Konan-ku, Yokohama,
Kanagawa 234-0054, Japan
- **Consulting Plaza Kamiooka
(Kamiooka Sub-Branch,
Yokohamaeki-Nishiguchi Branch)**
6-1, Kamiooka Nishi 1-chome, Konan-ku, Yokohama,
Kanagawa 233-8556, Japan
- **Consulting Plaza Totsuka
(Totsuka Sub-Branch,
Yokohamaeki-Nishiguchi Branch)**
16-1, Totsuka-cho, Totsuka-ku, Yokohama,
Kanagawa 244-0003, Japan
- **Kawasaki Branch**
3-1, Ekimae Hon-cho, Kawasaki-ku, Kawasaki,
Kanagawa 210-0007, Japan
- **Consulting Plaza Mizonokuchi
(Mizonokuchi Sub-Branch,
Sangenjaya Branch)**
1-1, Mizonokuchi 2-chome, Takatsu-ku, Kawasaki,
Kanagawa 213-0001, Japan
- **Consulting Plaza Shin-Yurigaoka
(Shin-Yurigaoka Sub-Branch,
Machida Branch)**
4-1, Kamiasao 1-chome, Asao-ku, Kawasaki,
Kanagawa 215-0021, Japan
- **Yokosuka Branch**
3, Odaki-cho 2-chome, Yokosuka,
Kanagawa 238-0008, Japan
- **Fujisawa Branch**
21-1-101, Minami Fujisawa, Fujisawa,
Kanagawa 251-0055, Japan
- ◆ **Fujisawa-Chuo Branch**
1-2, Kugenuma Higashi, Fujisawa,
Kanagawa 251-0026, Japan
- **Consulting Plaza Ofuna
(Ofuna Sub-Branch, Fujisawa Branch)**
4-1, Ofuna 1-chome, Kamakura,
Kanagawa 247-0056, Japan
- ◆ **Sagami-Ono Branch**
13-7, Sagamiono 3-chome, Minami-ku, Sagami-hara,
Kanagawa 252-0303, Japan
- **Atsugi Sub-Branch, Machida Branch**
5-14, Naka-cho 3-chome, Atsugi,
Kanagawa 243-0018, Japan
- **Odawara Branch**
2-12, Sakae-cho 1-chome, Odawara,
Kanagawa 250-0011, Japan
- **Utsunomiya Branch**
4-12, Hon-cho, Utsunomiya, Tochigi 320-0033, Japan
- **Maebashi Branch**
2-12, Hon-machi 2-chome, Maebashi,
Gunma 371-0023, Japan

*2 Consulting Plaza Tsudanuma-Ekimae will move into our Tsudanuma Branch, and operate there from October 9 (Tuesday), 2012.

*3 Consulting Plaza Kashiwa-Ekimae will move into our Kashiwa Consulting Office, and operate there from October 9 (Tuesday), 2012.

*4 Consulting Plaza Aobadai-Ekimae will move into our Aobadai Consulting Office, and operate there from July 17 (Tuesday), 2012.

Koshinetsu, Hokuriku

- ◆ **Kofu Branch**
17-14, Marunouchi 1-chome, Kofu,
Yamanashi 400-0031, Japan
- ◆ **Niigata Branch**
1178-1, Kamiokawa-maedori Rokuban-cho, Chuo-ku,
Niigata 951-8068, Japan
- **Niigata-Chuo Branch**
905, Nishibori-maedori Rokuban-cho, Chuo-ku,
Niigata 951-8062, Japan
- **Toyama Branch**
1-36, Sakura-machi 1-chome, Toyama 930-0003, Japan
- **Kanazawa Branch**
10, Shimo Tsutsumi-cho, Kanazawa,
Ishikawa 920-0917, Japan
- ◆ **Kanazawa-Chuo Branch**
1-18, Kami Tsutsumi-cho, Kanazawa,
Ishikawa 920-0869, Japan
- **Fukui Branch**
7-1, Chuo 1-chome, Fukui 910-0006, Japan

Tokai

- **Nagoya Business Department**
15-33, Sakae 3-chome, Naka-ku, Nagoya,
Aichi 460-0008, Japan
- ◆ **Nagoya-Sakae Branch**
1-1, Sakae 4-chome, Naka-ku, Nagoya,
Aichi 460-0008, Japan
- **Consulting Plaza Nagoya,
Nagoya Business Department**
15-33, Sakae 3-chome, Naka-ku, Nagoya,
Aichi 460-0008, Japan
- **Kanayamabashi Sub-Branch,
Nagoya Business Department**
14-9, Kanayama 1-chome, Naka-ku, Nagoya,
Aichi 460-0022, Japan
- **Nagoya-Ekimae Branch**
26-8, Meieki 3-chome, Nakamura-ku, Nagoya,
Aichi 450-0002, Japan
- ◆ **Meieki-Minami Branch**
24-30, Meieki Minami 1-chome, Nakamura-ku, Nagoya,
Aichi 450-0003, Japan
- **Ichinomiya Branch**
7-15, Sakae 3-chome, Ichinomiya, Aichi 491-0858, Japan
- **Okazaki Branch**
16, Koseidori-Nishi 3-chome, Okazaki,
Aichi 444-0059, Japan
- **Toyohashi Branch**
135, Ekimaeodori 1-chome, Toyohashi,
Aichi 440-0888, Japan
- **Shizuoka Branch**
9-5, Miyuki-cho, Aoi-ku, Shizuoka 420-0857, Japan
- ◆ **Shizuoka-Chuo Branch**
3-10, Koya-machi, Aoi-ku, Shizuoka 420-0852, Japan
- **Numazu Branch**
4-2, Ote-machi 5-chome, Numazu, Shizuoka 410-0801,
Japan
- **Gifu Branch**
3, Nagazumi-cho 2-chome, Gifu 500-8175, Japan
- **Yokkaichi Branch**
5-4, Suwa-cho, Yokkaichi, Mie 510-8650, Japan

Kinki

- ◆ **Osaka Business Department**
5-33, Kitahama 4-chome, Chuo-ku, Osaka 540-8639, Japan
- **Osaka-Chuo Branch**
2-21, Kitahama 2-chome, Chuo-ku, Osaka 541-0041, Japan
- ◆ **Umeda Branch**
8-47, Kakuda-cho, Kita-ku, Osaka 530-0017, Japan
- **Hankyu-Umeda Branch**
8-47, Kakuda-cho, Kita-ku, Osaka 530-0017, Japan
- **Consulting Plaza Hankyu-Umeda,
Hankyu-Umeda Branch**
8-47, Kakuda-cho, Kita-ku, Osaka 530-0017, Japan
- ◆ **Namba Branch**
1-60, Namba 5-chome, Chuo-ku, Osaka 542-0076, Japan
- ◆ **Namba Housing Loan Center Sub-Branch,
Namba Branch**
4-4, Namba 4-chome, Chuo-ku, Osaka 542-0076, Japan
- **Namba-Chuo Branch**
7-17, Namba 3-chome, Chuo-ku, Osaka 542-0076, Japan
- ◆ **Abenobashi Branch**
6-1, Abenosuji 1-chome, Abeno-ku, Osaka 545-0052, Japan
- **Abeno Branch**
3-15, Abenosuji 1-chome, Abeno-ku,
Osaka 545-0052, Japan
- ◆ **Sakai Branch**
59-2, Mikunigaoka Miyuki-dori, Sakai-ku, Sakai,
Osaka 590-0028, Japan
- ◆ **i-Station Izumigaoka
(Senboku Sub-Branch, Sakai Branch)**
2-1, Chayamada 1-chome, Minami-ku, Sakai,
Osaka 590-0115, Japan
- ◆ **Yao Branch**
6-8, Higashi Hon-machi 3-chome, Yao,
Osaka 581-0004, Japan
- ◆ **Hirakata Branch**
13-20, Oka Higashi-cho, Hirakata, Osaka 573-0032, Japan
- **Keihan-Hirakata Branch**
19-1, Oka Higashi-cho, Hirakata, Osaka 573-0032, Japan
- ◆ **Takatsuki Branch**
5-20, Konya-machi, Takatsuki, Osaka 569-0804, Japan
- ◆ **Ibaraki Branch**
2-30, Futaba-cho, Ibaraki, Osaka 567-0829, Japan
- **Consulting Plaza Ibaraki-Chuo
(Ibaraki-Chuo Sub-Branch,
Hankyu-Umeda Branch)**
8-30-3, Matsugamoto-cho, Ibaraki, Osaka 567-0033, Japan
- ◆ **Toyonaka Branch**
1-1, Hon-machi 1-chome, Toyonaka, Osaka 560-0021, Japan
- ◆ **Senri-Chuo Branch**
1-3, Shinsenri Higashi-machi 1-chome, Toyonaka,
Osaka 560-0082, Japan
- **Consulting Plaza Senri-Chuo-Ekimae*⁵
(Senri-Chuo-Ekimae Sub-Branch,
Hankyu-Umeda Branch)**
3, Shinsenri Higashi-machi 1-chome, Toyonaka,
Osaka 560-0082, Japan

*5 Consulting Plaza Senri-Chuo-Ekimae will move into our Senri-Chuo Branch, and operate there from July 17 (Tuesday), 2012.

Chugoku, Shikoku

- **Ikeda Branch**
1-1-134, Kureha-cho, Ikeda, Osaka 563-0048, Japan
- ◆ **Kobe Branch**
1-6, Goko-dori 8-chome, Chuo-ku, Kobe, Hyogo 651-0087, Japan
- **Kobe-Sannomiya Branch**
1-18, Onoedori 7-chome, Chuo-ku, Kobe, Hyogo 651-0088, Japan
- **Consulting Plaza Seishin-Chuo (Seishin-Chuo Sub-Branch, Kobe-Sannomiya Branch)**
9-4, Kojidai 5-chome, Nishi-ku, Kobe, Hyogo 651-2273, Japan
- **Tsukaguchi Branch**
15-1, Tsukaguchi-cho 1-chome, Amagasaki, Hyogo 661-0002, Japan
- ◆ **Nishinomiya Consulting Office (Nishinomiya Sub-Branch, Umeda Branch)**
5-39, Takamatsu-cho, Nishinomiya, Hyogo 663-8204, Japan
- **Consulting Plaza Nishinomiya-Kitaguchi*6 (Nishinomiya-Kitaguchi Sub-Branch, Hankyu-Umeda Branch)**
14-2, Takamatsu-cho, Nishinomiya, Hyogo 663-8204, Japan
- ◆ **Ashiya Consulting Office (Ashiya Sub-Branch, Umeda Branch)**
5-2, Funado-cho, Ashiya, Hyogo 659-0093, Japan
- ◆ **Kawanishi Branch**
7-18, Chuo-cho, Kawanishi, Hyogo 666-0016, Japan
- ◆ **Akashi Branch**
6-31, Oakashi-cho 1-chome, Akashi, Hyogo 673-0891, Japan
- ◆ **Himeji Branch**
252, Ekimae-cho, Himeji, Hyogo 670-0927, Japan
- ◆ **Kyoto Branch**
612, Karasuma-dori Shijo-sagaru Suiginya-cho, Shimogyo-ku, Kyoto 600-8411, Japan
- **Kyoto-Shijo Branch**
66, Tachiurinishi-machi, Higashiiru, Higashitoin, Shijiyodori, Shimogyo-ku, Kyoto 600-8007, Japan
- **Consulting Plaza Kyoto-Shijo, Kyoto-Shijo Branch**
66, Tachiurinishi-machi, Higashiiru, Higashitoin, Shijiyodori, Shimogyo-ku, Kyoto 600-8007, Japan
- **Otsu Branch**
3-10, Umebayashi 1-chome, Otsu, Shiga 520-0051, Japan
- ◆ **Nara-Saidaiji Branch**
1-50, Saidaiji Higashi-machi 2-chome, Nara 631-0821, Japan
- **Consulting Plaza Gakuenmae (Gakuenmae Sub-Branch, Namba-Chuo Branch)**
8-11, Gakuen Kita 1-chome, Nara 631-0036, Japan
- ◆ **Wakayama Branch**
3-6, Higashi Kuramae-cho, Wakayama 640-8203, Japan

- **Tottori Branch**
103, Ima-machi 1-chome, Tottori 680-0822, Japan
- ◆ **Okayama Branch**
1-5, Ekimoto-machi, Kita-ku, Okayama 700-0024, Japan
- **Okayama-Chuo Branch**
11-28, Omote-cho 1-chome, Kita-ku, Okayama 700-0822, Japan
- **Hiroshima Branch**
2-22, Kamiya-cho 1-chome, Naka-ku, Hiroshima 730-0031, Japan
- ◆ **Hiroshima-Chuo Branch*7**
2-12, Kamiya-cho 2-chome, Naka-ku, Hiroshima 730-0031, Japan
- ◆ **Fukuyama Branch**
15-1, Moto-machi, Fukuyama, Hiroshima 720-0063, Japan
- ◆ **Yamaguchi-Hofu Branch**
4-24, Ebisu-machi 1-chome, Hofu, Yamaguchi 747-0036, Japan
- **Takamatsu Branch**
9-4, Konya-machi, Takamatsu, Kagawa 760-0027, Japan
- ◆ **Matsuyama Branch**
11-1, Sanban-cho 4-chome, Matsuyama, Ehime 790-0003, Japan

Kyushu

- ◆ **Fukuoka Branch**
12-1, Tenjin 2-chome, Chuo-ku, Fukuoka 810-0001, Japan
- **Fukuoka-Tenjin Branch**
9-17, Tenjin 1-chome, Chuo-ku, Fukuoka 810-0001, Japan
- **Kita-Kyushu Branch**
1-5, Kaji-machi 1-chome, Kokurakita-ku, Kita-Kyushu, Fukuoka 802-0004, Japan
- **Saga Branch**
3-2, Matsubara 1-chome, Saga 840-0831, Japan
- ◆ **Kumamoto Branch**
2-5, Tetori Hon-cho, Chuo-ku, Kumamoto 860-0808, Japan
- **Kumamoto-Chuo Branch**
10-34, Hanabata-cho, Chuo-ku, Kumamoto 860-0806, Japan
- **Oita Branch**
3-23, Chuo-machi 1-chome, Oita 870-0035, Japan
- ◆ **Kagoshima Branch**
7-8-101, Kinsei-cho, Kagoshima 892-0828, Japan

Overseas Network

Branch

- New York Branch**
527 Madison Avenue, New York, NY 10022, U.S.A
- London Branch**
155 Bishopsgate, London EC2M 3XU, U.K.
- Singapore Branch**
8 Shenton Way, #45-01, AXA Tower, Singapore 068811
- Shanghai Branch**
50F Jin Mao Tower, 88 Shiji Dadao Pudong New Area, Shanghai 200121, People's Republic of China

Representative Office

- Beijing Representative Office (Banking business)**
Room 7009, 7th Floor, Chang Fu Gong Office Building, No. 26, Jianguomenwai Dajie, Chaoyang District, Beijing 100022, People's Republic of China
- Beijing Representative Office (Securities business)**
Room 5011, 5th Floor, Chang Fu Gong Office Building, No. 26, Jianguomenwai Dajie, Chaoyang District, Beijing 100022, People's Republic of China
- Jakarta Representative Office**
11th Floor, Summitmas I, Jl. Jenderal Sudirman, Kaveling 61-62, Jakarta 12190, Indonesia
- Seoul Representative Office**
20th Floor, Samsung Life Insurance Building, 55, Sejong Street (Taepyeongno 2-ga), Jung-gu, Seoul 100-716, Korea
- Bangkok Representative Office**
15th Floor, GPF Witthayu Tower A, Suite 1502, 93/1 Wireless Road, Pathumwan, Bangkok 10330, Thailand

*6 Consulting Plaza Nishinomiya-Kitaguchi will move into our Nishinomiya Consulting Office, and operate there from October 9 (Tuesday), 2012.

*7 Hiroshima-Chuo Branch will move into the second floor of Hiroshima Train Vert Building where our Hiroshima Branch is located, and operate there from August 27 (Monday), 2012.

Number of Contracted Trust Agencies* (As of June 30, 2012)

* Trust agency is a collective term for trust contract agencies under the Trust Business Act, and agencies concurrently engaged in trust business under Article 1 of the Act on Provision, etc. of Trust Business by Financial Institutions.

Type	Number of Agencies				
	Trust Contract Agencies	Agencies Engaged in Concurrent Business			Solicitation for National Pension Fund
		Stock Transfer Agency Service	Service Related to Wills		
Banks, Shinkin Banks, etc.	92	70	41	57	36
Regional Banks	41	39	28	26	13
Second Regional Banks	18	14	8	11	9
Shinkin Central Bank, Shinkin Banks	29	14	3	18	14
Shoko Chukin Bank	1	1	—	1	—
(Total of Financial Institutions)	89	68	39	56	36
City Banks, etc.	3	2	2	1	—
Securities Firms	6	1	4	6	—
Business Enterprises	15	2	—	14	—
Tax and Accounting Firms	6	—	—	6	—
Total	119	73	45	83	36

Bank Service Agency (As of June 30, 2012)

Trade Name of Bank Service Agency	SBI Sumishin Net Bank, Ltd.
Business Offices, etc. Operating Bank Agency Service	Head Office, Ichigo Branch, Budou Branch, Mikan Branch, Lemon Branch, Ringo Branch (6 Branches)

Subsidiaries and Affiliated Companies (As of June 30, 2012)

Japan

Name	Location	Date of Establishment	Paid-in Capital (Millions)	Scope of Business	Ownership (%)	SMTH Group Ownership (%)
Tokyo Securities Transfer Agent Co., Ltd.	6-2, Otemachi 2-chome, Chiyoda-ku, Tokyo	November 1, 1962	50	Stock Transfer Agency Services	100.0	—
Sumitomo Mitsui Trust Guarantee Co., Ltd.	33-1, Shiba 3-chome, Minato-ku, Tokyo	July 10, 1978	301	Housing Loan Guaranty Business	100.0	—
Chuo Mitsui Information Technology Co., Ltd.	1-21, Shimo-Meguro 6-chome, Meguro-ku, Tokyo	January 20, 1986	200	IT-related Services Business	100.0	—
Sumitomo Mitsui Trust General Service Co., Ltd.	8-11, Harumi 1-chome, Chuo-ku, Tokyo	April 2, 1988	100	Property Leasing and Management Business	100.0	—
Sumitomo Mitsui Trust Wealth Partners Co., Ltd.	4-1, Marunouchi 1-chome, Chiyoda-ku, Tokyo	November 6, 1989	155	Consulting Business	100.0	—
Sumitomo Mitsui Trust Business Service Co., Ltd.	33-1, Shiba 3-chome, Minato-ku, Tokyo	May 24, 1990	450	Clerical Agency, Temporary Staffing Business	100.0	—
Sumitomo Mitsui Trust Loan & Finance Co., Ltd.	2-1, Yaesu 2-chome, Chuo-ku, Tokyo	January 22, 1992	6,000	Money Lending Business	100.0	—
Sumitomo Mitsui Trust Real Estate Investment Management Co., Ltd.	4-1, Marunouchi 1-chome, Chiyoda-ku, Tokyo	November 7, 2005	300	Investment Advisory, Investment Management	100.0	—
Sumitomo Mitsui Trust Career Partners Co., Ltd.	4-1, Marunouchi 1-chome, Chiyoda-ku, Tokyo	April 3, 2006	100	Training Programs, Personnel-related Services	100.0	—
Nikko Asset Management Co., Ltd.	7-1, Akasaka 9-chome, Minato-ku, Tokyo	December 1, 1959	17,363	Investment Management, Investment Advisory	91.3	—
Japan Securities Agents, Ltd.	2-4, Nihonbashi-kayabacho 1-chome, Chuo-ku, Tokyo	September 13, 1950	500	Stock Transfer, Account Management Agency Services	85.1	—
Sumitomo Mitsui Trust Panasonic Finance Co., Ltd.	6-1, Marunouchi 1-chome, Chiyoda-ku, Tokyo	February 27, 1967	25,584	General Leasing, Installment Purchase Services, Credit Card Business	84.8	—
Japan TA Solution, Ltd.	1-1, Nikko-cho, Fuchu, Tokyo	July 1, 1998	2,005	IT, Calculation Outsourcing Business	80.0	20.0
Sumishin Guaranty Company Limited	33-1, Shiba 3-chome, Minato-ku, Tokyo	August 25, 1977	300	Loan Guaranty Business	—	100.0
Sumitomo Mitsui Trust Card Co., Ltd.	11-5, Nihonbashi-honcho 4-chome, Chuo-ku, Tokyo	June 24, 1983	100	Credit Card Business	50.0	50.0
Sumishin Information Service Company Limited	1-3, Shinsenri Nishi-machi 1-chome, Toyonaka, Osaka	February 12, 1973	100	IT-related Services Businesses	41.2	58.8
Sumitomo Mitsui Trust Investment Co., Ltd.	4-13, Kyobashi 1-chome, Chuo-ku, Tokyo	March 22, 2000	100	Equity Investment Business	40.0	60.0
Sumitomo Mitsui Trust Realty Co., Ltd.	3-1, Yaesu 2-chome, Chuo-ku, Tokyo	January 24, 1986	300	Real Estate Brokerage Business	5.0	95.0
SBI Sumishin Net Bank, Ltd.	6-1, Roppongi 1-chome, Minato-ku, Tokyo	June 3, 1986	31,000	Banking Business	50.0	—
Japan Pension Operation Service, Ltd.	1, Nihonbashi-hakozakicho 24-chome, Chuo-ku, Tokyo	December 21, 2004	1,500	Calculation of Pension Payments, etc., Clerical Outsourcing Business	50.0	—
Japan Stockholders Data Service Company, Limited	8-4 Izumi 2-chome, Suginami-ku, Tokyo	April 1, 2008	2,000	Stock Transfer Outsourcing Business	50.0	—
BUSINEXT CORPORATION	31-19, Shiba 2-chome, Minato-ku, Tokyo	January 18, 2001	9,000	Money Lending Business	40.0	—
Top REIT Asset Management Co., Ltd.	13-1, Nihonbashi 1-chome, Chuo-ku, Tokyo	October 22, 2004	300	Investment Corporation, Asset Management Business	38.0	—
HR One Corporation	4-1, Shibakouen 2-chome, Minato-ku, Tokyo	May 20, 2002	519	HR-related Services Business	35.8	—
Mitsui & Co., Logistics Partners Ltd.	4-3 Hitotsubashi 2-chome, Chiyoda-ku, Tokyo	July 13, 2004	150	Investment Corporation, Asset Management Business	29.0	—

Overseas

Name	Location	Date of Establishment	Paid-in Capital (Millions)	Scope of Business	Ownership (%)	SMTH Group Ownership (%)
Sumitomo Mitsui Trust (Hong Kong) Ltd.	3401-3404, 34/F, One Exchange Square, 8 Connaught Place, Central, Hong Kong	July 4, 1978	\$ 45	Finance Business	100.0	0.0
Sumitomo Mitsui Trust Bank (Luxembourg) S.A	18, Boulevard Royal, L-2449, Luxembourg, Grand Duchy of Luxembourg	April 22, 1985	\$ 30	Trust, Finance, Securities Businesses	100.0	0.0
Sumitomo Mitsui Trust Bank (U.S.A.) Limited	111 River Street, Hoboken, NJ 07030, U.S.A.	May 20, 2002	\$ 56	Finance, Trust Business	100.0	0.0
Sumitomo Mitsui Trust International Limited	155 Bishopsgate, London EC2M 3XU, U.K.	July 2, 1986	£ 20	Securities Businesses	100.0	—
STB Finance Cayman Ltd.	PO Box 309, Ugland House, Grand Cayman, KY1-1104, Cayman Islands	January 19, 1993	\$ 0.01	Finance Business	100.0	0.0
STB Preferred Capital 2 (Cayman) Ltd.	PO Box 309, Ugland House, Grand Cayman, KY1-1104, Cayman Islands	November 21, 2005	¥ 51,500	Finance Business	100.0	0.0
STB Preferred Capital 3 (Cayman) Ltd.	PO Box 309, Ugland House, Grand Cayman, KY1-1104, Cayman Islands	February 14, 2007	¥ 51,500	Finance Business	100.0	0.0
STB Preferred Capital 4 (Cayman) Ltd.	PO Box 309, Ugland House, Grand Cayman, KY1-1104, Cayman Islands	May 26, 2008	¥ 111,600	Finance Business	100.0	0.0
STB Preferred Capital 5 (Cayman) Ltd.	PO Box 309, Ugland House, Grand Cayman, KY1-1104, Cayman Islands	November 26, 2008	¥ 70,900	Finance Business	100.0	0.0
Zijin Trust Co., Ltd.	30th Floor, Zifeng Tower, 2 Zhongshan Road(N), Gulou District, Nanjing 210008, People's Republic of China	September 25, 1992	RMB 500	Trust, Finance Business	19.9	0.0
NewSmith LLP	4th Floor West, Lansdowne House, 57 Berkeley Square, London W1 J6ER, U.K.	February 8, 2012	£ 40	Investment Management Business	0.0	40.0