

## Board of Directors and Executive Officers (As of July 1, 2015)

Representative Director, Chairman Hitoshi Tsunekage	External Director, Director Takeshi Suzuki* <sup>1</sup>	Senior Managing Executive Officer Masaru Hashimoto	Managing Executive Officer Yutaka Nishida
Representative Director, President Kunitaro Kitamura	External Director, Director Mikio Araki* <sup>1</sup>	Senior Managing Executive Officer Yukihiko Kitano	Executive Officer Toshio Masui
Representative Director, Deputy President Nobuo Iwasaki	Senior Corporate Auditor Teruhiko Sugita	Senior Managing Executive Officer Yoshikazu Tanaka	Executive Officer Shigeki Tanaka
Representative Director, Deputy President Rikiya Hattori	Senior Corporate Auditor Takashi Kamikanda	Managing Executive Officer Tadashi Nishimura	Executive Officer Kiyomitsu Asahi
Director, Senior Managing Executive Officer Tetsuo Ohkubo	External Auditor, Corporate Auditor Tetsuya Yoshimoto* <sup>2</sup>	Managing Executive Officer Jiro Araumi	Executive Officer Kazuhisa Koashi
Director, Managing Executive Officer Yoshiaki Koshimura	External Auditor, Corporate Auditor Shinichi Saito* <sup>2</sup>	Managing Executive Officer Masahiro Tsuchiya	
External Director, Director Soichi Shinohara* <sup>1</sup>	Deputy President Executive Officer Sumikazu Tsutsui	Managing Executive Officer Toru Takakura	

\*1 External Directors as provided for in Article 2, Paragraph 15 of the Companies Act.

\*2 External Corporate Auditors as provided for in Article 2, Paragraph 16 of the Companies Act.

## Employees (As of March 31, 2015)

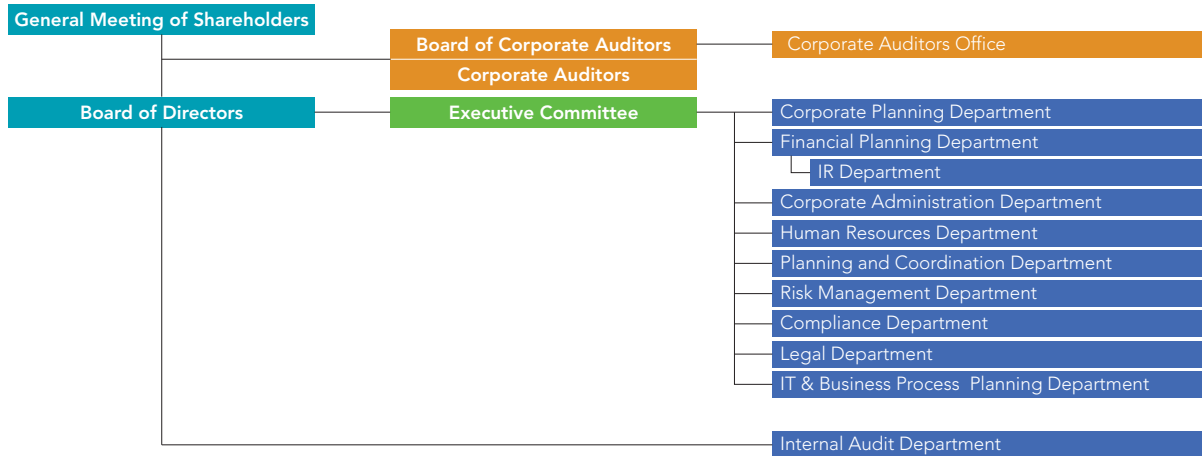
Category	March 31, 2015	March 31, 2014
Number of Employees	39	46
Average Age	45 years, 5 months	44 years, 0 months
Average Length of Employment	21 years, 7 months	20 years, 4 months
Average Annual Salary	¥ 12,497 thousand	¥ 11,741 thousand

Notes: 1. The number of employees indicates total personnel, etc., excluding employees seconded to other companies and temporary and part-time staff.

2. Employees include those seconded from SuMi TRUST Bank and the average length of employment includes years of employment at their own companies.

3. Average annual salary includes bonus and extra payment.

# Organizational Chart (As of April 1, 2015)



## Subsidiaries and Affiliated Companies (As of June 30, 2015)

### Japan

Name	Location	Date of Establishment	Paid-in Capital (Millions)	Scope of Business	Ownership by SuMi TRUST Holdings (%)	Ownership by subsidiaries (%)
Sumitomo Mitsui Trust Bank, Limited	1-4-1, Marunouchi, Chiyoda-ku, Tokyo	July 28, 1925	¥ 342,037	Trust and Banking Business	100.0	—
Sumitomo Mitsui Trust Asset Management Co., Ltd.	33-1, Shiba 3-chome, Minato-ku, Tokyo	November 1, 1986	¥ 300	Investment Management Business, Investment Advisory and Agency Business	100.0	—
Sumitomo Mitsui Trust Research Institute Co., Ltd.	3-13, Toranomon 4-chome, Minato-ku, Tokyo	July 1, 1988	¥ 300	Survey, Research, Consulting, Investment Advisory Business	100.0	—
Japan Trustee Services Bank, Ltd.	8-11, Harumi 1-chome, Chuo-ku, Tokyo	June 20, 2000	¥ 51,000	Trust and Banking Business	66.6	—

### Overseas

Name	Location	Date of Establishment	Paid-in Capital (Millions)	Scope of Business	Ownership by SuMi TRUST Holdings (%)	Ownership by subsidiaries (%)
MTH Preferred Capital 5 (Cayman) Limited	PO Box 309, Ugland House, Grand Cayman KY1-1104, Cayman Islands	February 8, 2007	¥ 33,700	Finance Business	100.0	—
CMTH Preferred Capital 6 (Cayman) Limited	PO Box 309, Ugland House, Grand Cayman KY1-1104, Cayman Islands	January 29, 2008	¥ 42,700	Finance Business	100.0	—
CMTH Preferred Capital 7 (Cayman) Limited	PO Box 309, Ugland House, Grand Cayman KY1-1104, Cayman Islands	November 28, 2008	¥ 41,600	Finance Business	100.0	—