

Board of Directors and Executive Officers (As of July 1, 2015)

Top Message/
Top Interview

Our Business Model,
Status of Group Businesses/
Financial Highlights

Progress of Midterm
Management Plan/
Special Feature

Comprehensive Capabilities of
the Sumitomo Mitsui Trust Group/
Topics

Review of Operations

Management Structure

Corporate Data

Representative Director, Chairman Kunitaro Kitamura	External Auditor, Corporate Auditor Yasuhiko Takano *2	Managing Executive Officer Hitoshi Sato	Executive Officer Tetsuya Yamawaki
Representative Director, President Hitoshi Tsunekage	External Auditor, Corporate Auditor Hiroshi Mitsunaga *2	Managing Executive Officer Atsushi Kaibara	Executive Officer Kenji Yamada
Representative Director, Deputy President Nobuo Iwasaki	Senior Managing Executive Officer Takuya Miyazaki	Managing Executive Officer Satoshi Kamiya	Executive Officer Kouji Tanaka
Representative Director, Deputy President Rikiya Hattori	Senior Managing Executive Officer Yasuyuki Yagi	Managing Executive Officer Kengo Noguchi	Executive Officer Yoshihisa Akutagawa
Representative Director, Deputy President Sumikazu Tsutsui	Senior Managing Executive Officer Hideki Hiraki	Managing Executive Officer Naohiro Tanaka	Executive Officer Atsuhiko Tanimoto
Director, Senior Managing Executive Officer Tetsuo Ohkubo	Senior Managing Executive Officer Yukihiko Kitano	Executive Officer Toshio Yamasaki	Executive Officer Kiyomitsu Asahi
Director, Senior Managing Executive Officer Masaru Hashimoto	Managing Executive Officer Jun Sasaki	Executive Officer Hiroshi Takahashi	Executive Officer Kazuhisa Koashi
Director, Senior Managing Executive Officer Yoshikazu Tanaka	Managing Executive Officer Akihiko Shirayama	Executive Officer Akira Yokota	Executive Officer Yoshinobu Yoshimoto
Director, Managing Executive Officer Yoshiaki Koshimura	Managing Executive Officer Tsuyoshi Saito	Executive Officer Seiji Iwakuma	Executive Officer Tsutomu Kurai
Director, Managing Executive Officer Tadashi Nishimura	Managing Executive Officer Toshiyuki Ueki	Executive Officer Kenji Kaiya	Executive Officer Yoshinori Momose
Director, Managing Executive Officer Jiro Araumi	Managing Executive Officer Akira Kamiyo	Executive Officer Toshio Masui	Executive Officer Akiyoshi Nagashima
Director, Managing Executive Officer Masahiro Tsuchiya	Managing Executive Officer Mutsumi Watanabe	Executive Officer Shigeki Tanaka	Executive Officer Ryouji Nishimoto
Director, Managing Executive Officer Toru Takakura	Managing Executive Officer Toshiya Nishino	Executive Officer Kouji Koyanagi	Executive Officer Toshiya Shimobeppu
Director, Managing Executive Officer Yutaka Nishida	Managing Executive Officer Koichi Onaka	Executive Officer Yoshio Hishida	Executive Officer Keiichi Hamano
External Director, Director Toshio Hoshino *1	Managing Executive Officer Tadao Umezawa	Executive Officer Takeshi Yamauchi	Executive Officer Noriyuki Awano
Corporate Auditor Masashi Hirose	Managing Executive Officer Kazuhiro Sekine	Executive Officer Kouichi Yamakado	Executive Officer Futoshi Itani
Corporate Auditor Satoru Abe	Managing Executive Officer Yasumi Nose	Executive Officer Kuniyuki Shudo	Executive Officer Kazuya Oyama

*1 External Directors as provided for in Article 2, Paragraph 15 of the Companies Act.

*2 External Corporate Auditors as provided for in Article 2, Paragraph 16 of the Companies Act.

Employees (As of March 31, 2015)

Category	March 31, 2015	March 31, 2014
Number of Employees	13,552	13,587
Average Age	42 years, 2 months	41 years, 10 months
Average Length of Employment	12 years, 10 months	12 years, 6 months
Average Annual Salary	¥ 7,205 thousand	¥ 7,246 thousand

Notes: 1. The number of employees indicates total personnel, etc., excluding employees seconded to other companies and temporary and part-time staff.
 2. Average annual salary includes bonus and extra payment.

Organizational Chart (As of April 1, 2015)

Top Message/
Top Interview

Our Business Model,
Status of Group Businesses/
Financial Highlights

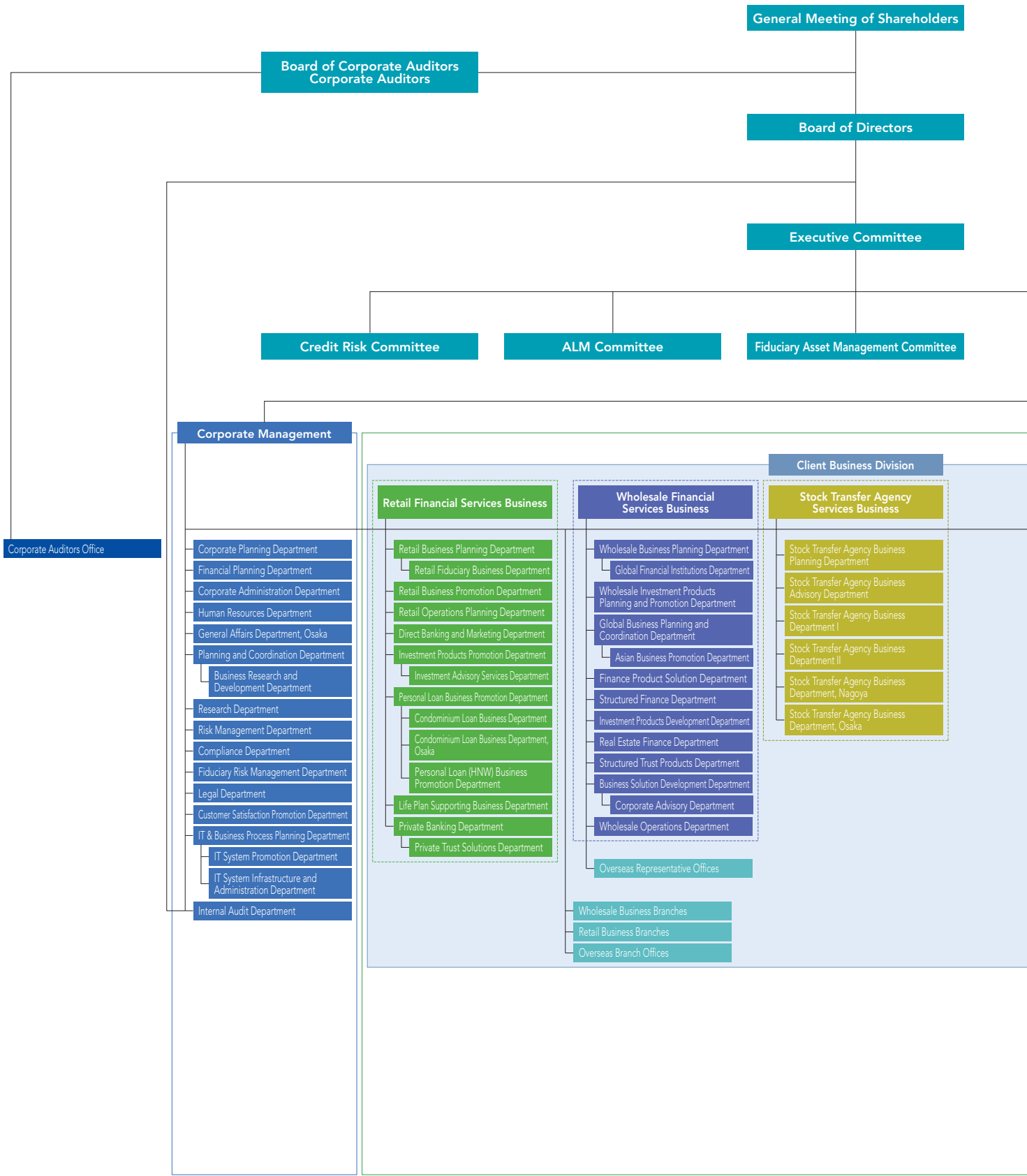
Progress of Midterm
Management Plan/
Special Feature

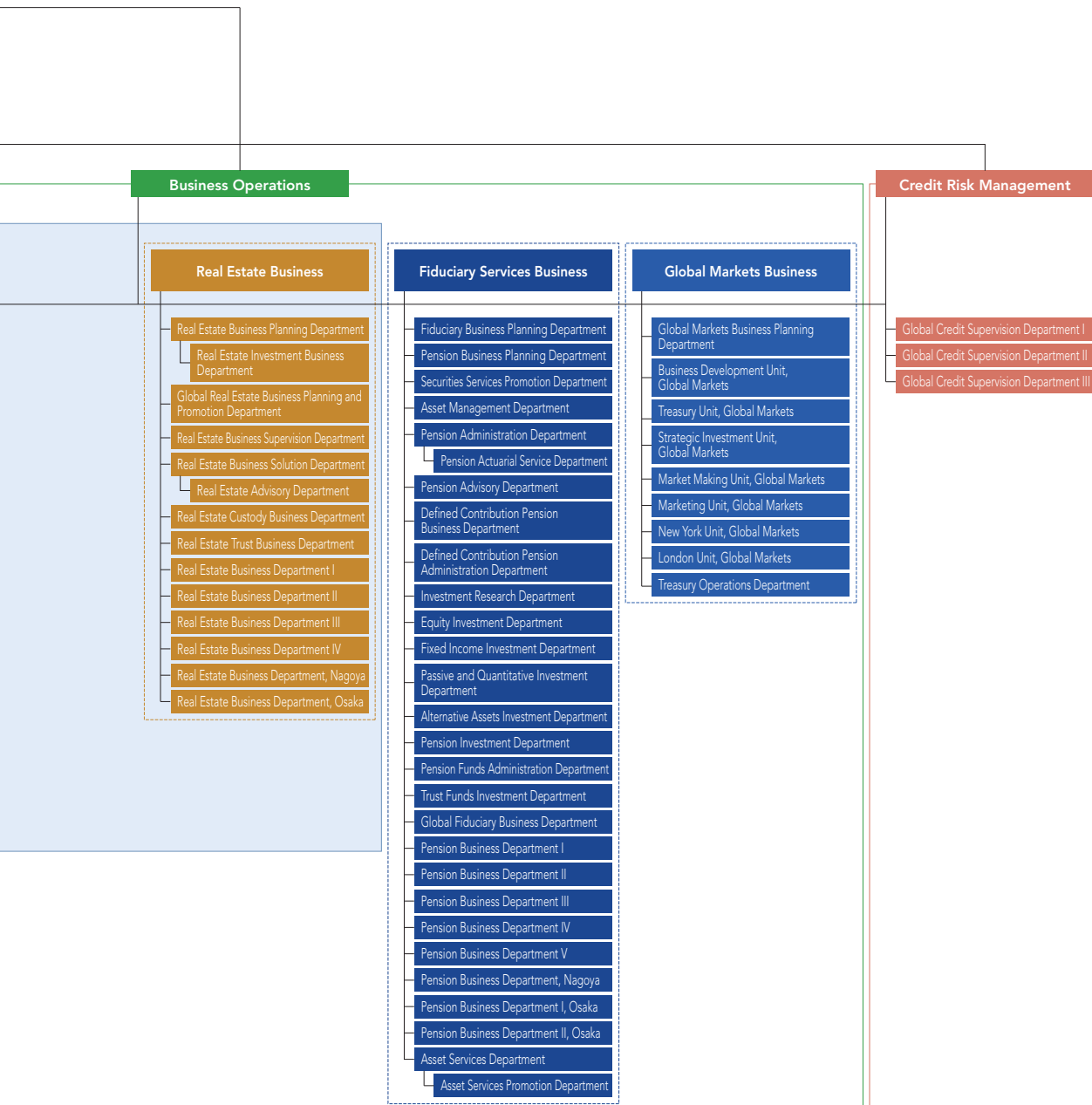
Comprehensive Capabilities of
the Sumitomo Mitsui Trust Group/
Topics

Review of Operations

Management Structure

Corporate Data





Branches (As of June 30, 2015)

... These branches house two sales outlets under one roof, a "branch-in-a-branch" method.

Hokkaido, Tohoku

Sapporo Branch

1, Kita 2-jo Nishi 4-chome, Chuo-ku, Sapporo, Hokkaido 060-0002, Japan

Consulting Plaza Sapporo, Sapporo Branch

1, Kita 2-jo Nishi 4-chome, Chuo-ku, Sapporo, Hokkaido 060-0002, Japan

Sapporo-Chuo Branch

1, Kita 2-jo Nishi 4-chome, Chuo-ku, Sapporo, Hokkaido 060-0002, Japan

Sendai Branch

1-7, Chuo 2-chome, Aoba-ku, Sendai, Miyagi 980-0021, Japan

Sendai-Aoba Branch

1-7, Chuo 2-chome, Aoba-ku, Sendai, Miyagi 980-0021, Japan

Tokyo

Tokyo Business Department

4-1, Marunouchi 1-chome, Chiyoda-ku, Tokyo 100-8233, Japan

Nihonbashi Business Department

1-1, Nihonbashi-muromachi 2-chome, Chuo-ku, Tokyo 103-0022, Japan

Tokyo-Chuo Branch

1-1, Nihonbashi-muromachi 2-chome, Chuo-ku, Tokyo 103-0022, Japan

Consulting Plaza Shinbashi (Shinbashi Sub-Branch, Tokyo Business Department)

20-1, Shinbashi 2-chome, Minato-ku, Tokyo 105-0004, Japan

Toranomon Consulting Office (Toranomon Sub-Branch, Tokyo Business Department)

7-1, Nishi Shinbashi 1-chome, Minato-ku, Tokyo 105-0003, Japan

Shiba Business Department

33-1, Shiba 3-chome, Minato-ku, Tokyo 105-8574, Japan

Shinjuku-Nishiguchi Branch

1-4, Nishi Shinjuku 1-chome, Shinjuku-ku, Tokyo 160-0023, Japan

Consulting Plaza Shinjuku-Nishiguchi, Shinjuku-Nishiguchi Branch

1-4, Nishi Shinjuku 1-chome, Shinjuku-ku, Tokyo 160-0023, Japan

Shinjuku Branch

26-11, Shinjuku 3-chome, Shinjuku-ku, Tokyo 160-0022, Japan

Ueno Branch

19-10, Ueno 1-chome, Taito-ku, Tokyo 110-0005, Japan

Ueno-Chuo Branch

19-10, Ueno 1-chome, Taito-ku, Tokyo 110-0005, Japan

Meguro Branch

25-5, Kamioosaki 2-chome, Shinagawa-ku, Tokyo 141-0021, Japan

Omori Branch

1-1, Sannou 2-chome, Ota-ku, Tokyo 143-0023, Japan

Sangenjaya Branch

1-1, Taishido 4-chome, Setagaya-ku, Tokyo 154-0004, Japan

Futako-Tamagawa Consulting Office (Futako-Tamagawa Sub-Branch, Shibuya-Chuo Branch)

22-12, Tamagawa 2-chome, Setagaya-ku, Tokyo 158-0094, Japan

Consulting Plaza Seijo (Seijo Sub-Branch, Shinjuku-Nishiguchi Branch)

5-34, Seijo 6-chome, Setagaya-ku, Tokyo 157-0066, Japan

Consulting Plaza Chitose-Karasuyama (Chitose Karasuyama Sub-Branch, Shinjuku Branch)

4-31, Minami Karasuyama 6-chome, Setagaya-ku, Tokyo 157-0062, Japan

Shibuya Branch

3-2, Dogenzaka 2-chome, Shibuya-ku, Tokyo 150-0043, Japan

Shibuya-Chuo Branch

22-3, Jinnan 1-chome, Shibuya-ku, Tokyo 150-0041, Japan

Jiyugaoka Branch

10-20, Jiyugaoka 2-chome, Meguro-ku, Tokyo 152-0035, Japan

Nakano Branch

62-5, Nakano 5-chome, Nakano-ku, Tokyo 164-0001, Japan

Ogikubo Branch

16-16, Kamiogi 1-chome, Sugiyama-ku, Tokyo 167-0043, Japan

Ikebukuro Branch

41-7, Higashi Ikebukuro 1-chome, Toshima-ku, Tokyo 170-0013, Japan

Ikebukuro-Higashiguchi Branch

41-7, Higashi Ikebukuro 1-chome, Toshima-ku, Tokyo 170-0013, Japan

Shakujii Branch

14-1, Shakujii-cho 2-chome, Nerima-ku, Tokyo 177-0041, Japan

Kichijoji Branch

14-9, Kichijoji Hon-cho 1-chome, Musashino, Tokyo 180-0004, Japan

Kichijoji-Chuo Branch

2-14, Kichijoji Hon-cho 2-chome, Musashino, Tokyo 180-0004, Japan

Tachikawa Branch

4-5, Akebono-cho 2-chome, Tachikawa, Tokyo 190-0012, Japan

Tachikawa-Kitaguchi Consulting Office (Tachikawa-Kitaguchi Sub-Branch, Kichijoji-Chuo Branch)

4-5, Akebono-cho 2-chome, Tachikawa, Tokyo 190-0012, Japan

Tachikawa Housing Loan Center Sub-Branch, Tachikawa Branch

14-13, Akebono-cho 1-chome, Tachikawa, Tokyo 190-0012, Japan

Hachioji Branch

9-1, Asahi-cho, Hachioji, Tokyo 192-0083, Japan

Hachioji-Ekimae Branch

1-4, Asahi-cho, Hachioji, Tokyo 192-0083, Japan

Machida Branch

3-4, Haramachida 6-chome, Machida, Tokyo 194-0013, Japan

Tama-Sakuragaoka Branch

1-5, Sekido 1-chome, Tama, Tokyo 206-0011, Japan

Seiseki-Sakuragaoka Consulting Office (Seiseki-Sakuragaoka Sub-Branch, Shinjuku Branch)

7-5, Sekido 1-chome, Tama, Tokyo 206-0011, Japan

Consulting Plaza Tama-Center (Tama-Center Sub-Branch, Tama-Sakuragaoka Branch)

44, Ochiai 1-chome, Tama, Tokyo 206-0033, Japan

Kanto

Urawa Branch

12-1, Takasago 1-chome, Urawa-ku,
Saitama 330-0063, Japan

Consulting Plaza Urawa, Urawa Branch

12-1, Takasago 1-chome, Urawa-ku,
Saitama 330-0063, Japan

Omiya Branch

32, Daimon-cho 1-chome, Omiya-ku,
Saitama 330-8511, Japan

Omiya-Ekimae Branch

32, Daimon-cho 1-chome, Omiya-ku,
Saitama 330-8511, Japan

Tokorozawa Branch

3-5, Hiyoshi-cho, Tokorozawa, Saitama 359-8691, Japan

Tokorozawa-Ekimae Branch

3-5, Hiyoshi-cho, Tokorozawa, Saitama 359-8691, Japan

Koshigaya Branch

14-22, Yayoi-cho, Koshigaya, Saitama 343-0816, Japan

Sugito Branch

13-12, Sugito 2-chome, Sugito-machi, Kitakatsushika-gun,
Saitama 345-0036, Japan

Chiba Branch

1-16, Fujimi 1-chome, Chuo-ku, Chiba 260-0015, Japan

Chiba-Ekimae Branch

1-16, Fujimi 1-chome, Chuo-ku, Chiba 260-0015, Japan

Ichikawa Branch

7-13, Ichikawa 1-chome, Ichikawa, Chiba 272-0034, Japan

Funabashi Branch

3-1, Hon-cho 1-chome, Funabashi, Chiba 273-0005, Japan

Tsudanuma Branch

14-5, Maebara Nishi 2-chome, Funabashi,
Chiba 274-0825, Japan

Matsudo Branch

2-1, Hon-cho, Matsudo, Chiba 271-0091, Japan

Kashiwa Consulting Office

(Kashiwa Sub-Branch, Ueno-Chuo Branch)

1-2, Asahi-cho 1-chome, Kashiwa, Chiba 277-0852, Japan

Yachiyo Branch

3-1, Yachiyodai Minami 1-chome, Yachiyo,
Chiba 276-0033, Japan

Yokohamaeki-Nishiguchi Branch

6-31, Minami Saiwai 1-chome, Nishi-ku, Yokohama, Kanagawa
220-0005, Japan

Yokohama Branch

14-10, Minami Saiwai 1-chome, Nishi-ku, Yokohama, Kanagawa
220-0005, Japan

Futamatagawa Sub-Branch

(Futamatagawa Sub-Branch, Yokohamaeki-Nishiguchi Branch)

3-2, Futamatagawa 1-chome, Asahi-ku, Yokohama, Kanagawa
241-0821, Japan

Tama-Plaza Branch

15-8, Utsukushigaoka 2-chome, Aoba-ku, Yokohama,
Kanagawa 225-0002, Japan

Aobadai Consulting Office

(Aobadai Sub-Branch, Shibuya-Chuo Branch)

9-2, Aobadai 2-chome, Aoba-ku, Yokohama,
Kanagawa 227-0062, Japan

Consulting Plaza Kohoku

(Kohoku Sub-Branch, Tama-Plaza Branch)

1-3, Nakagawa Chuo 1-chome, Tsuzuki-ku, Yokohama,
Kanagawa 224-0003, Japan

Konandai Branch

15-2-102, Konandai 3-chome, Konan-ku, Yokohama, Kanagawa
234-0054, Japan

Consulting Plaza Kamiooka

(Kamiooka Sub-Branch, Yokohamaeki-Nishiguchi Branch)

6-1, Kamiooka Nishi 1-chome, Konan-ku, Yokohama, Kanagawa
233-8556, Japan

Consulting Plaza Totsuka

(Totsuka Sub-Branch, Yokohamaeki-Nishiguchi Branch)

16-1, Totsuka-cho, Totsuka-ku, Yokohama,
Kanagawa 244-0003, Japan

Kawasaki Branch

3-1, Ekimae Hon-cho, Kawasaki-ku, Kawasaki,
Kanagawa 210-0007, Japan

Shin-Yurigaoka Branch

5-3, Kamiasao 1-chome, Asao-ku, Kawasaki,
Kanagawa 215-0021, Japan

Yokosuka Branch

3, Odaki-cho 2-chome, Yokosuka,
Kanagawa 238-0008, Japan

Fujisawa Branch

21-1-101, Minami Fujisawa, Fujisawa,
Kanagawa 251-0055, Japan

Fujisawa-Chuo Branch

1-2, Kugenuma Higashi, Fujisawa,
Kanagawa 251-0026, Japan

Sagami-Ono Branch

13-7, Sagamiono 3-chome, Minami-ku, Sagami-hara,
Kanagawa 252-0303, Japan

Atsugi Sub-Branch, Machida Branch

5-14, Naka-cho 3-chome, Atsugi,
Kanagawa 243-0018, Japan

Odawara Branch

2-12, Sakae-cho 1-chome, Odawara,
Kanagawa 250-0011, Japan

Utsunomiya Branch

4-12, Hon-cho, Utsunomiya, Tochigi 320-0033, Japan

Maebashi Branch

2-12, Hon-machi 2-chome, Maebashi,
Gunma 371-0023, Japan

Koshinetsu, Hokuriku

Kofu Branch

17-14, Marunouchi 1-chome, Kofu,
Yamanashi 400-0031, Japan

Niigata Branch

1178-1, Kamiokawa-maedori Rokuban-cho, Chuo-ku,
Niigata 951-8068, Japan

Niigata-Chuo Branch

905, Nishibori-maedori Rokuban-cho, Chuo-ku,
Niigata 951-8062, Japan

Toyama Branch

1-36, Sakura-machi 1-chome, Toyama 930-0003, Japan

Kanazawa Branch

10, Shimo Tsutsumi-cho, Kanazawa,
Ishikawa 920-0917, Japan

Kanazawa-Chuo Branch

1-18, Kami Tsutsumi-cho, Kanazawa,
Ishikawa 920-0869, Japan

Fukui Branch

7-1, Chuo 1-chome, Fukui 910-0006, Japan

Tokai

Nagoya Business Department

15-33, Sakae 3-chome, Naka-ku, Nagoya,
Aichi 460-0008, Japan

Consulting Plaza Nagoya, Nagoya Business Department

15-33, Sakae 3-chome, Naka-ku, Nagoya,
Aichi 460-0008, Japan

Nagoya-Sakae Branch

1-1, Sakae 4-chome, Naka-ku, Nagoya,
Aichi 460-0008, Japan

Kanayamabashi Sub-Branch, Nagoya Business Department

14-9, Kanayama 1-chome, Naka-ku, Nagoya,
Aichi 460-0022, Japan

Nagoya-Ekimae Branch

26-8, Meieki 3-chome, Nakamura-ku, Nagoya,
Aichi 450-0002, Japan

Meieki-Minami Branch

24-30, Meieki Minami 1-chome, Nakamura-ku, Nagoya,
Aichi 450-0003, Japan

Ichinomiya Branch

7-15, Sakae 3-chome, Ichinomiya, Aichi 491-0858, Japan

Okazaki Branch

16, Koseidori-Nishi 3-chome, Okazaki,
Aichi 444-0059, Japan

Toyohashi Branch

135, Ekimaeoodori 1-chome, Toyohashi,
Aichi 440-0888, Japan

Shizuoka Branch

9-5, Miyuki-cho, Aoi-ku, Shizuoka 420-0857, Japan

Shizuoka-Chuo Branch

3-10, Koya-machi, Aoi-ku, Shizuoka 420-0852, Japan

Numazu Branch

4-2, Ote-machi 5-chome, Numazu, Shizuoka 410-0801, Japan

Gifu Branch

3, Nagazumi-cho 2-chome, Gifu 500-8175, Japan

Yokkaichi Branch

5-4, Suwa-cho, Yokkaichi, Mie 510-8650, Japan

Kinki

Osaka Business Department

5-33, Kitahama 4-chome, Chuo-ku, Osaka 540-8639, Japan

Osaka-Chuo Branch

5-33, Kitahama 4-chome, Chuo-ku, Osaka 540-8639, Japan

Umeda Branch

8-47, Kakuda-cho, Kita-ku, Osaka 530-0017, Japan

Hankyu-Umeda Branch

8-47, Kakuda-cho, Kita-ku, Osaka 530-0017, Japan

Consulting Plaza Hankyu-Umeda, Hankyu-Umeda Branch

8-47, Kakuda-cho, Kita-ku, Osaka 530-0017, Japan

Namba Branch

1-60, Namba 5-chome, Chuo-ku, Osaka 542-0076, Japan

Namba Housing Loan Center Sub-Branch, Namba Branch

4-4, Namba 4-chome, Chuo-ku, Osaka 542-0076, Japan

Namba-Chuo Branch

7-17, Namba 3-chome, Chuo-ku, Osaka 542-0076, Japan

Abenobashi Branch

6-1, Abenosuji 1-chome, Abeno-ku, Osaka 545-0052, Japan

Abeno Branch

6-1, Abenosuji 1-chome, Abeno-ku, Osaka 545-0052, Japan

Sakai Branch

59-2, Mikuniigaoka Miyuki-dori, Sakai-ku, Sakai,
Osaka 590-0028, Japan

Consulting Plaza Izumigaoka (Senboku Sub-Branch, Sakai Branch)

2-1, Chayamadai 1-chome, Minami-ku, Sakai,
Osaka 590-0115, Japan

Yao Branch

6-8, Higashi Hon-machi 3-chome, Yao,
Osaka 581-0004, Japan

Hirakata Branch

13-20, Oka Higashi-cho, Hirakata, Osaka 573-0032, Japan

Keihan-Hirakata Branch

13-20, Oka Higashi-cho, Hirakata, Osaka 573-0032, Japan

Takatsuki Branch

5-20, Konya-machi, Takatsuki, Osaka 569-0804, Japan

Ibaraki Branch

2-30, Futaba-cho, Ibaraki, Osaka 567-0829, Japan

Toyonaka Branch

1-1, Hon-machi 1-chome, Toyonaka, Osaka 560-0021, Japan

Senri-Chuo Branch*¹

1-3, Shinsenri Higashi-machi 1-chome, Toyonaka,
Osaka 560-0082, Japan

*1 The Senri-Chuo Branch will be reopened on July 21, 2015 in a redeveloped building with the same address as before.

Chugoku, Shikoku

Ikeda Branch

1-1-134, Kureha-cho, Ikeda, Osaka 563-0048, Japan

Kobe Branch

1-6, Goko-dori 8-chome, Chuo-ku, Kobe, Hyogo 651-0087, Japan

Kobe-Sannomiya Branch

1-6, Goko-dori 8-chome, Chuo-ku, Kobe, Hyogo 651-0087, Japan

Consulting Plaza Seishin-Chuo (Seishin-Chuo Sub-Branch, Kobe Branch)

9-4, Kojidai 5-chome, Nishi-ku, Kobe, Hyogo 651-2273, Japan

Tsukaguchi Branch

15-1, Tsukaguchi-cho 1-chome, Amagasaki, Hyogo 661-0002, Japan

Nishinomiya Consulting Office (Nishinomiya Sub-Branch, Umeda Branch)

5-39, Takamatsu-cho, Nishinomiya, Hyogo 663-8204, Japan

Ashiya Consulting Office (Ashiya Sub-Branch, Umeda Branch)

5-2, Funado-cho, Ashiya, Hyogo 659-0093, Japan

Kawanishi Branch

7-18, Chuo-cho, Kawanishi, Hyogo 666-0016, Japan

Akashi Branch

5-28, Higashinakano-machi, Akashi, Hyogo 673-0886, Japan

Himeji Branch

252, Ekimae-cho, Himeji, Hyogo 670-0927, Japan

Kyoto Branch

612, Karasuma-dori Shijo-sagaru Suiginya-cho, Shimogyo-ku, Kyoto 600-8411, Japan

Kyoto-Shijo Branch

66, Tachiurinishi-machi, Higashiiru, Higashitoin, Shijiyodori, Shimogyo-ku, Kyoto 600-8007, Japan

Consulting Plaza Kyoto-Shijo, Kyoto-Shijo Branch

66, Tachiurinishi-machi, Higashiiru, Higashitoin, Shijiyodori, Shimogyo-ku, Kyoto 600-8007, Japan

Otsu Branch

3-10, Umebayashi 1-chome, Otsu, Shiga 520-0051, Japan

Nara-Saidaiji Branch

1-50, Saidaiji Higashi-machi 2-chome, Nara 631-0821, Japan

Consulting Plaza Gakuenmae (Gakuenmae Sub-Branch, Namba-Chuo Branch)

8-11, Gakuen Kita 1-chome, Nara 631-0036, Japan

Wakayama Branch

3-6, Higashi Kuramae-cho, Wakayama 640-8203, Japan

Tottori Branch

103, Ima-machi 1-chome, Tottori 680-0822, Japan

Okayama Branch

1-5, Ekimoto-machi, Kita-ku, Okayama 700-0024, Japan

Okayama-Chuo Branch

1-5, Ekimoto-machi, Kita-ku, Okayama 700-0024, Japan

Okayama-Ekimae Sub-Branch, Okayama Branch

1-6, Ekimoto-machi, Kita-ku, Okayama 700-0024, Japan

Okayama-Ekimae Sub-Branch, Okayama-Chuo Branch

1-6, Ekimoto-machi, Kita-ku, Okayama 700-0024, Japan

Hiroshima Branch

2-22, Kamiya-cho 1-chome, Naka-ku, Hiroshima 730-0031, Japan

Hiroshima-Chuo Branch

2-22, Kamiya-cho 1-chome, Naka-ku, Hiroshima 730-0031, Japan

Fukuyama Branch

15-1, Moto-machi, Fukuyama, Hiroshima 720-0063, Japan

Yamaguchi-Hofu Branch

4-24, Ebisu-machi 1-chome, Hofu, Yamaguchi 747-0036, Japan

Takamatsu Branch

9-4, Konya-machi, Takamatsu, Kagawa 760-0027, Japan

Matsuyama Branch

11-1, Sanban-cho 4-chome, Matsuyama, Ehime 790-0003, Japan

Kyushu

Fukuoka Branch

12-1, Tenjin 2-chome, Chuo-ku, Fukuoka 810-0001, Japan

Fukuoka-Tenjin Branch

12-1, Tenjin 2-chome, Chuo-ku, Fukuoka 810-0001, Japan

Kita-Kyushu Branch

1-5, Kaji-machi 1-chome, Kokurakita-ku, Kita-Kyushu, Fukuoka 802-0004, Japan

Saga Branch

3-2, Matsubara 1-chome, Saga 840-0831, Japan

Kumamoto Branch

2-5, Tetori Hon-cho, Chuo-ku, Kumamoto 860-0808, Japan

Kumamoto-Chuo Branch

10-34, Hanabata-cho, Chuo-ku, Kumamoto 860-0806, Japan

Oita Branch

3-23, Chuo-machi 1-chome, Oita 870-0035, Japan

Kagoshima Branch

7-8-101, Kinsei-cho, Kagoshima 892-0828, Japan

Overseas Network

Branch

New York Branch

527 Madison Avenue, New York, NY 10022, U.S.A

London Branch

155 Bishopsgate, London EC2M 3XU, U.K.

Singapore Branch

One Raffles Quay, #24-01 North Tower, Singapore 048583

Shanghai Branch

50F Jin Mao Tower, 88 Shiji Dadao Pudong New Area, Shanghai 200121, People's Republic of China

Hong Kong Branch

25/F, AIA Central, 1 Connaught Road, Central, Hong Kong

Representative Office

Beijing Representative Office (Banking business)

Room 7009, 7th Floor, Chang Fu Gong Office Building, No. 26, Jianguomenwai Dajie, Chaoyang District, Beijing 100022, People's Republic of China

Beijing Representative Office (Securities business)

Room 5011, 5th Floor, Chang Fu Gong Office Building, No. 26, Jianguomenwai Dajie, Chaoyang District, Beijing 100022, People's Republic of China

Jakarta Representative Office

20th Floor, Summitmas I, Jl. Jend. Sudirman, Kaveling 61-62, Jakarta 12190, Indonesia

Seoul Representative Office

20th Floor, Samsung Life Insurance Building, 55, Sejong Street (Taepyeongno 2-ga), Jung-gu, Seoul 100-716, Korea

Bangkok Representative Office

15th Floor, GPF Witthayu Tower A, Suite 1502, 93/1 Wireless Road, Pathumwan, Bangkok 10330, Thailand

Number of Contracted Trust Agencies* (As of June 30, 2015)

* Trust Agency is a collective term that refers to trust contract agencies under the Trust Business Act as well as agencies concurrently engaged in trust business under Article 1 of the Act on Provision, etc. of Trust Business by Financial Institutions.

Type	Number of Agencies				
	Trust Contract Agencies	Agencies Engaged in Concurrent Business			Solicitation for National Pension Fund
		Stock Transfer Agency Service	Service Related to Wills		
Banks, Shinkin Banks, etc.	93	67	43	62	41
Regional Banks	41	39	30	28	16
Second Regional Banks	17	12	8	11	11
Shinkin Central Bank, Shinkin Banks	31	13	3	21	14
Shoko Chukin Bank	1	1	—	1	—
(Total of Regional Financial Institutions)	90	65	41	61	41
City Banks, etc.	3	2	2	1	—
Securities Firms	7	1	4	7	—
Life Insurers and Business Enterprises	16	2	1	15	—
Total	116	70	48	84	41

Bank Service Agency (As of June 30, 2015)

Trade Name of Bank Service Agency	SBI Sumishin Net Bank, Ltd.
Business Offices, etc. Operating Bank Agency Service	Head Office, Shinjuku Business Center, Ichigo Branch, Budou Branch, Mikan Branch, Lemon Branch, Ringo Branch (7 Branches)

Subsidiaries and Affiliated Companies (As of June 30, 2015)

Japan

Name	Location	Date of Establishment	Paid-in Capital (Millions)	Scope of Business	Ownership by SuMi TRUST Bank (%)	Ownership by subsidiaries (%)
Tokyo Securities Transfer Agent Co., Ltd.	6-2, Otemachi 2-chome, Chiyoda-ku, Tokyo	November 1, 1962	¥ 50	Stock Transfer Agency Services	100.0	—
Sumitomo Mitsui Trust Guarantee Co., Ltd.	33-1, Shiba 3-chome, Minato-ku, Tokyo	July 10, 1978	¥ 301	Housing Loan Guaranty Business	100.0	—
Sumitomo Mitsui Trust General Service Co., Ltd.	8-11, Harumi 1-chome, Chuo-ku, Tokyo	April 2, 1988	¥ 100	Property Leasing and Management Business	100.0	—
Sumitomo Mitsui Trust Wealth Partners Co., Ltd.	6-1, Marunouchi 1-chome, Chiyoda-ku, Tokyo	November 6, 1989	¥ 155	Consulting Business	100.0	—
Sumitomo Mitsui Trust Business Service Co., Ltd.	33-1, Shiba 3-chome, Minato-ku, Tokyo	May 24, 1990	¥ 100	Clerical Agency, Temporary Staffing Business, Outplacement Agency	100.0	—
Sumitomo Mitsui Trust Loan & Finance Co., Ltd.	2-1, Yaesu 2-chome, Chuo-ku, Tokyo	January 22, 1992	¥ 6,000	Money Lending Business	100.0	—
Sumitomo Mitsui Trust TA Solution Co., Ltd.	8-4 Izumi 2-chome, Suginami-ku, Tokyo	July 1, 1998	¥ 2,005	IT, Calculation Outsourcing Business	100.0	—
Sumitomo Mitsui Trust Real Estate Investment Management Co., Ltd.	11-1, Kanda-nishikicho 3-chome, Chiyoda-ku, Tokyo	November 7, 2005	¥ 300	Investment Management, Investment Advisory	100.0	—
Sumitomo Mitsui Trust Career Partners Co., Ltd.	4-1, Marunouchi 1-chome, Chiyoda-ku, Tokyo	April 3, 2006	¥ 100	Training Programs, Personnel-related Services	100.0	—
Nikko Asset Management Co., Ltd.	7-1, Akasaka 9-chome, Minato-ku, Tokyo	December 1, 1959	¥ 17,363	Investment Management, Investment Advisory	91.3	—
Japan Securities Agents, Ltd.	2-4, Nihonbashi-kayabacho 1-chome, Chuo-ku, Tokyo	September 13, 1950	¥ 500	Stock Transfer, Account Management Agency Services	85.1	—
Sumitomo Mitsui Trust Panasonic Finance Co., Ltd.	2-3, Shibaura 1-chome, Minato-ku, Tokyo	February 27, 1967	¥ 25,584	General Leasing, Installment Purchase Services, Credit Card Business	84.8	—
Top REIT Asset Management Co., Ltd.	3-7, Yaesu 1-chome, Chuo-ku, Tokyo	October 22, 2004	¥ 300	Investment Corporation, Asset Management Business	69.0	—
Sumishin Guaranty Company Limited	33-1, Shiba 3-chome, Minato-ku, Tokyo	August 25, 1977	¥ 300	Loan Guarantee Business	—	100.0
Sumitomo Mitsui Trust Card Co., Ltd.	33-1, Shiba 3-chome, Minato-ku, Tokyo	June 24, 1983	¥ 100	Credit Card Business	50.0	50.0
Sumitomo Mitsui Trust Systems & Services Co., Ltd.	1-10, Nikko-cho, Fuchu, Tokyo	February 12, 1973	¥ 100	IT-related Services Business	44.4	55.6
Sumitomo Mitsui Trust Investment Co., Ltd.	33-1, Shiba 3-chome, Minato-ku, Tokyo	March 22, 2000	¥ 100	Equity Investment Business	40.0	60.0
Sumitomo Mitsui Trust Realty Co., Ltd.	11-1, Kanda-nishikicho 3-chome, Chiyoda-ku, Tokyo	January 24, 1986	¥ 300	Real Estate Brokerage Business	4.6	95.4
SBI Sumishin Net Bank, Ltd.	6-1, Roppongi 1-chome, Minato-ku, Tokyo	June 3, 1986	¥ 31,000	Banking Business	50.0	—
Japan Pension Operation Service, Ltd.	24-1, Nihonbashi-hakozakicho, Chuo-ku, Tokyo	December 21, 2004	¥ 1,500	Calculation of Pension Payments, etc., Clerical Outsourcing Business	50.0	—
Japan Stockholders Data Service Company, Limited	8-4 Izumi 2-chome, Suginami-ku, Tokyo	April 1, 2008	¥ 2,000	Stock Transfer Outsourcing Business	50.0	—
HR One Corporation	4-1, Shibakouen 2-chome, Minato-ku, Tokyo	May 20, 2002	¥ 519	HR-related Services Business	35.8	—
Sky Ocean Asset Management Co., Ltd.	1-1, Minatomirai 3-chome, Nishi-ku, Yokohama, Kanagawa	November 25, 2014	¥ 300	Investment Management	34.0	—
Mitsui & Co., Logistics Partners Ltd.	4-3 Hitotsubashi 2-chome, Chiyoda-ku, Tokyo	July 13, 2004	¥ 150	Investment Corporation, Asset Management Business	29.0	—

Overseas

Name	Location	Date of Establishment	Paid-in Capital (Millions)	Scope of Business	Ownership by SuMi TRUST Bank (%)	Ownership by subsidiaries (%)
Sumitomo Mitsui Trust (Hong Kong) Limited	25/F, AIA Central, 1 Connaught Road, Central, Hong Kong	July 4, 1978	\$ 45	Securities Business	100.0	—
Sumitomo Mitsui Trust Bank (Luxembourg) S.A.	2, rue Peterelchen, L-2370, Howald, Grand Duchy of Luxembourg	April 22, 1985	\$ 30	Trust, Banking, Securities Businesses	100.0	—
Sumitomo Mitsui Trust (UK) Limited	155 Bishopsgate, London EC2M 3XU, U.K.	March 6, 1986	£ 1.78	Trust Business	100.0	—
Sumitomo Mitsui Trust International Limited	155 Bishopsgate, London EC2M 3XU, U.K.	July 2, 1986	£ 20	Securities Business	100.0	—
Sumitomo Mitsui Trust Bank (U.S.A.) Limited	111 River Street, Hoboken, NJ 07030, U.S.A.	May 20, 2002	\$ 56	Banking, Trust Businesses	100.0	—
Sumitomo Mitsui Trust (Ireland) Limited	Block 5, Harcourt Centre, Harcourt Road, Dublin 2, Ireland	June 1, 2004	€ 41.87	Trust Business	100.0	—
STB Finance Cayman Limited	PO Box 309, Ugland House, Grand Cayman, KY1-1104, Cayman Islands	January 19, 1993	\$ 0.01	Finance Business	100.0	—
STB Preferred Capital 3 (Cayman) Limited	PO Box 309, Ugland House, Grand Cayman, KY1-1104, Cayman Islands	February 14, 2007	¥ 51,500	Finance Business	100.0	—
STB Preferred Capital 4 (Cayman) Limited	PO Box 309, Ugland House, Grand Cayman, KY1-1104, Cayman Islands	May 26, 2008	¥ 111,600	Finance Business	100.0	—
Zijin Trust Co., Ltd.	30th Floor, Zifeng Tower, 2 Zhongshan Road(N), Gulou District, Nanjing 210008, People's Republic of China	September 25, 1992	RMB 1,200	Trust Business	19.9	—
Sumitomo Mitsui Trust Bank (Thai) Public Company Limited	32nd Floor, Sathorn Square Office Tower, 98 North Sathorn Road, Silom, Bangrak, Bangkok 10500, Thailand	July 7, 2014	THB 20,000	Preparations for the start of banking operations	99.9	0.0