

## Board of Directors and Executive Officers (As of July 1, 2018)

Director, President (Representative Executive Officer) <b>Tetsuo Ohkubo</b>	Director (External) <b>Soichi Shinohara*1</b>	Managing Executive Officer <b>Yasumi Nose</b>	Executive Officer*2 <b>Toshio Masui</b>
Director, Senior Managing Executive Officer (Representative Executive Officer) <b>Jiro Araumi</b>	Director (External) <b>Takeshi Suzuki*1</b>	Managing Executive Officer, Executive Officer*2 <b>Atsushi Kaibara</b>	Executive Officer*2 <b>Kazuya Oyama</b>
Director, Senior Managing Executive Officer (Representative Executive Officer) <b>Toru Takakura</b>	Director (External) <b>Mikio Araki*1</b>	Managing Executive Officer <b>Akira Yokota</b>	Executive Officer*2 <b>Kazuhisa Koashi</b>
Director, Executive Officer <b>Masaru Hashimoto</b>	Director (External) <b>Isao Matsushita*1</b>	Managing Executive Officer <b>Shigeki Tanaka</b>	Executive Officer*2 <b>Toshiaki Nakano</b>
Director <b>Kunitaro Kitamura</b>	Director (External) <b>Shinichi Saito*1</b>	Managing Executive Officer <b>Hitoshi Sato</b>	Executive Officer*2 <b>Yoshio Hishida</b>
Director <b>Hitoshi Tsunekage</b>	Director (External) <b>Takashi Yoshida*1</b>	Executive Officer, Executive Officer*2 <b>Kiyomitsu Asahi</b>	Executive Officer*2 <b>Yoshinori Momose</b>
Director <b>Yasuyuki Yagi</b>	Director (External) <b>Hiroko Kawamoto*1</b>	Executive Officer*2 <b>Yukihiro Kitano</b>	Executive Officer*2 <b>Takuji Marui</b>
Director <b>Hiroshi Misawa</b>	Senior Managing Executive Officer, Executive Officer*2 <b>Akihiko Shirayama</b>	Executive Officer*2 <b>Tsuyoshi Saito</b>	Executive Officer*2 <b>Atsushi Matsumoto</b>
	Senior Managing Executive Officer <b>Yoshiaki Koshimura</b>	Executive Officer*2 <b>Tadao Umezawa</b>	Executive Officer*2 <b>Nobuhisa Takahashi</b>
	Senior Managing Executive Officer <b>Tadashi Nishimura</b>	Executive Officer*2 <b>Masahiro Tsuchiya</b>	
	Senior Managing Executive Officer <b>Yutaka Nishida</b>	Executive Officer*2 <b>Kengo Noguchi</b>	

\*1 External Directors as provided for in Article 2, Item 15 of the Companies Act.

\*2 Executive Officers as defined in our internal policy; unless otherwise annotated, Executive Officers are defined in the Companies Act.

## Employees (As of March 31, 2018)

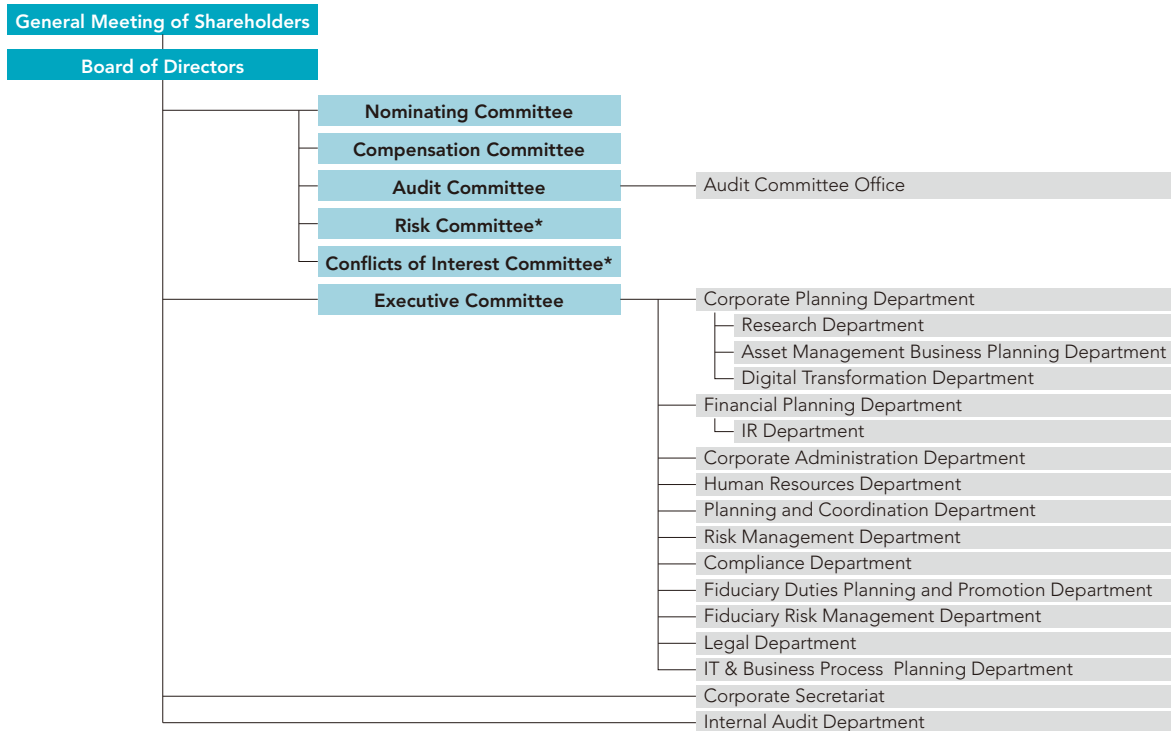
Category	March 31, 2018	March 31, 2017
Number of Employees	91	39
Average Age	50 years, 2 months	46 years, 8 months
Average Length of Employment	24 years, 7 months	22 years, 0 months
Average Annual Salary	¥ 13,786 thousand	¥ 12,665 thousand

Notes: 1. The number of employees indicates total personnel, etc., excluding employees seconded to other companies and temporary and part-time staff.

2. Employees include those seconded from SuMi TRUST Bank and the average length of employment includes years of employment at their own companies.

3. Average annual salary includes bonus and extra payment.

# Organizational Chart (As of June 30, 2018)



\*Risk Committee and Conflicts of Interest Committee are Voluntary committees.

## Subsidiaries and Affiliated Companies (As of June 30, 2018)

### Japan

Name	Location	Date of Establishment	Paid-in Capital (Millions)	Scope of Business	Ownership by SuMi TRUST Holdings (%)	Ownership by subsidiaries (%)
Sumitomo Mitsui Trust Bank, Limited	1-4-1, Marunouchi, Chiyoda-ku, Tokyo	July 28, 1925	¥ 342,037	Trust and Banking Business	100.0	—
Sumitomo Mitsui Trust Asset Management Co., Ltd.	33-1, Shiba 3-chome, Minato-ku, Tokyo	November 1, 1986	¥ 300	Investment Management Business, Investment Advisory and Agency Business	100.0	—
Sumitomo Mitsui Trust Research Institute Co., Ltd.	3-13, Toranomon 4-chome, Minato-ku, Tokyo	July 1, 1988	¥ 300	Survey, Research, Consulting, Investment Advisory Business	100.0	—
Mutual Fund & Insurance Research Institute	33-1, Shiba 3-chome, Minato-ku, Tokyo	December 1, 2017	¥ 150	Survey, Research, Consulting	88.0	—
Japan Trustee Services Bank, Ltd.	8-11, Harumi 1-chome, Chuo-ku, Tokyo	June 20, 2000	¥ 51,000	Trust and Banking Business	66.6	—

### Overseas

Name	Location	Date of Establishment	Paid-in Capital (Millions)	Scope of Business	Ownership by SuMi TRUST Holdings (%)	Ownership by subsidiaries (%)
CMTH Preferred Capital 6 (Cayman) Limited	PO Box 309, Ugland House, Grand Cayman KY1-1104, Cayman Islands	January 29, 2008	¥ 42,700	Finance Business	100.0	—
CMTH Preferred Capital 7 (Cayman) Limited	PO Box 309, Ugland House, Grand Cayman KY1-1104, Cayman Islands	November 28, 2008	¥ 41,600	Finance Business	100.0	—

\* For details concerning subsidiaries and affiliated companies of SuMi TRUST Bank, Limited, please refer to page 13.