

## Board of Directors and Executive Officers (As of July 1, 2018)

Chairman (Co-chairman) Kunitaro Kitamura	Audit & Supervisory Board Member Jun Sasaki	Managing Executive Officer Toshiya Shimobeppeu	Executive Officer Miyu Yajima
Chairman (Co-chairman) Hitoshi Tsunekage	Audit & Supervisory Board Member Tsutomu Kurai	Managing Executive Officer Futoshi Itani	Executive Officer Daisuke Maeda
President (Representative Director) Masaru Hashimoto	Audit & Supervisory Board Member (External) Yasuhiko Takano*2	Managing Executive Officer Kazuya Oyama	Executive Officer Yasuo Hanashita
Deputy President (Representative Director) Sumikazu Tsutsui	Audit & Supervisory Board Member (External) Mitsuhiro Aso*2	Managing Executive Officer Kuniyuki Shudo	Executive Officer Atsushi Ueda
Deputy President (Representative Director) Yukihiro Kitano	Audit & Supervisory Board Member (External) Hiroya Nakakubo*2	Managing Executive Officer Kenji Kaiya	Executive Officer Toshiaki Nakano
Deputy President (Representative Director) Tsuyoshi Saito	Senior Managing Executive Officer Mutsumi Watanabe	Managing Executive Officer Keiichi Hamano	Executive Officer Takuji Marui
Director, Senior Managing Executive Officer Akihiko Shirayama	Senior Managing Executive Officer Tadao Umezawa	Executive Officer Yoshihisa Akutagawa	Executive Officer Shigenori Ikemura
Director, Senior Managing Executive Officer Yoshiaki Koshimura	Senior Managing Executive Officer Toshiya Nishino	Executive Officer Kazuhisa Koashi	Executive Officer Junya Ueda
Director, Senior Managing Executive Officer Tadashi Nishimura	Managing Executive Officer Koichi Onaka	Executive Officer Yoshinori Momose	Executive Officer Satoshi Kitai
Director, Senior Managing Executive Officer Yutaka Nishida	Managing Executive Officer Yasumi Nose	Executive Officer Akiyoshi Nagashima	Executive Officer Nobuaki Yamaguchi
Director, Senior Managing Executive Officer Jiro Araumi	Managing Executive Officer Hitoshi Sato	Executive Officer Ryouji Nishimoto	Executive Officer Yoshio Murakami
Director, Senior Managing Executive Officer Toru Takakura	Managing Executive Officer Satoshi Kamiya	Executive Officer Noriyuki Awano	Executive Officer Masaya Noda
Director, Senior Managing Executive Officer Masahiro Tsuchiya	Managing Executive Officer Kengo Noguchi	Executive Officer Tomohiro Nishimura	Executive Officer Hitoshi Kotaka
Director, Managing Executive Officer Atsushi Kaibara	Managing Executive Officer Naohiro Tanaka	Executive Officer Yutaka Fujisawa	Executive Officer Yasunaga Matsumoto
Director, Managing Executive Officer Shigeki Tanaka	Managing Executive Officer Seiji Iwakuma	Executive Officer Takashi Kameda	Executive Officer Tetsuya Hiwatashi
Director, Managing Executive Officer Kouji Tanaka	Managing Executive Officer Yoshio Hishida	Executive Officer Hideshi Sano	Executive Officer Atsushi Matsumoto
Director Tetsuo Ohkubo	Managing Executive Officer Akira Yokota	Executive Officer Shigeki Moriki	Executive Officer Takumi Fujisawa
Director (External) Toshio Hoshino*1	Managing Executive Officer Toshio Masui	Executive Officer Masahiko Kitajima	Executive Officer Nobuhisa Takahashi
Director (External) Hirosi Mitsunaga*1	Managing Executive Officer Kouji Koyanagi	Executive Officer Teruki Ido	
Director (External) Hideki Kanda*1		Executive Officer Yuki Takada	

\*1 External Directors as provided for in Article 2, Item 15 of the Companies Act.

\*2 External Audit & Supervisory Board Member as provided for in Article 2, Item 16 of the Companies Act.  
Executive Officers as defined in our internal policy.

# Employees (As of March 31, 2018)

Category	March 31, 2018	March 31, 2017
Number of Employees	13,659	13,647
Average Age	42 years, 8 months	42 years, 8 months
Average Length of Employment	13 years, 2 months	13 years, 2 months
Average Annual Salary	¥ 6,960 thousand	¥ 7,072 thousand

Notes: 1. The number of employees indicates total personnel, etc., excluding employees seconded to other companies and temporary and part-time staff.  
 2. Average annual salary includes bonus and extra payment.

# Organizational Chart (As of June 30, 2018)

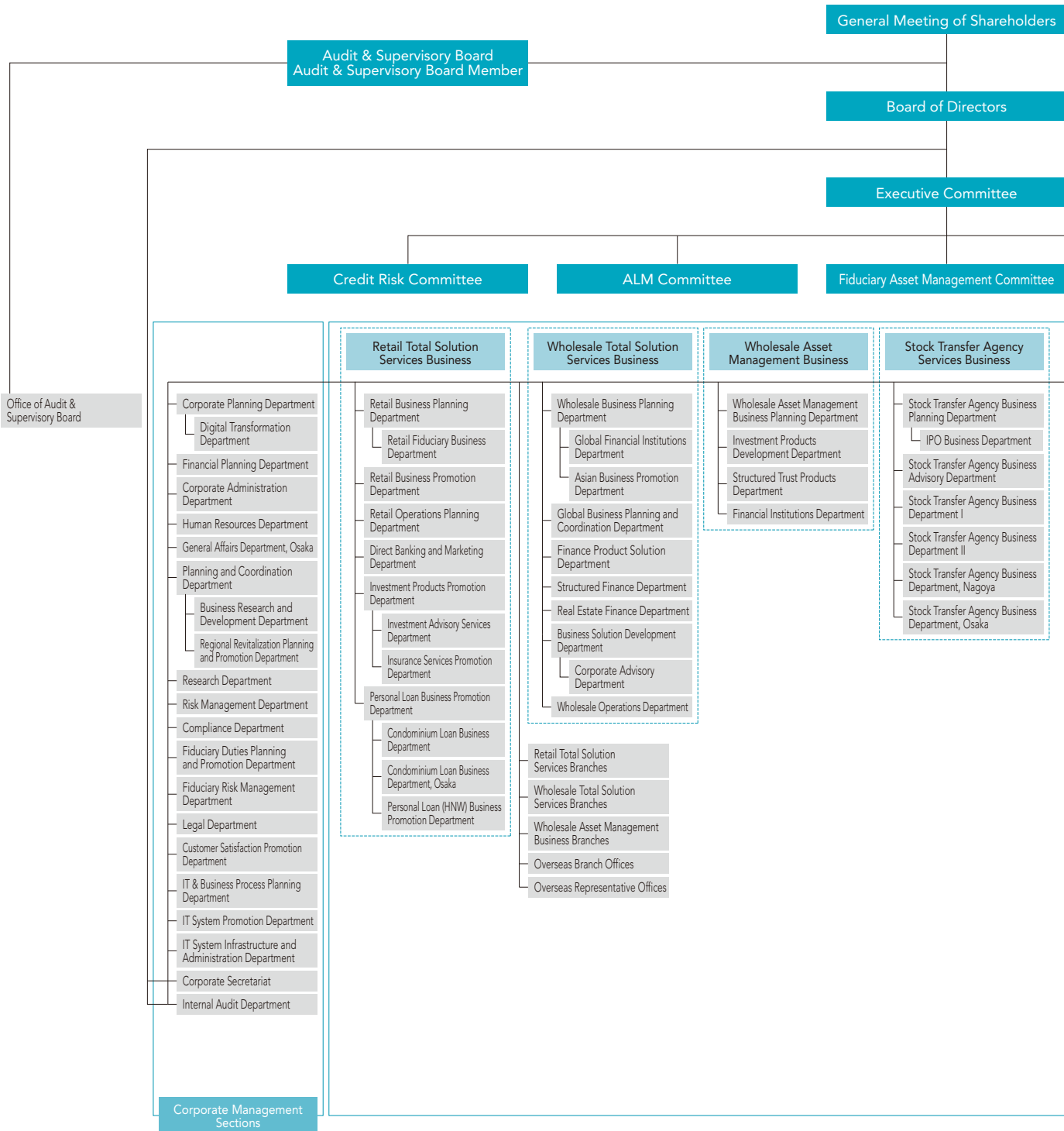
Corporate Data

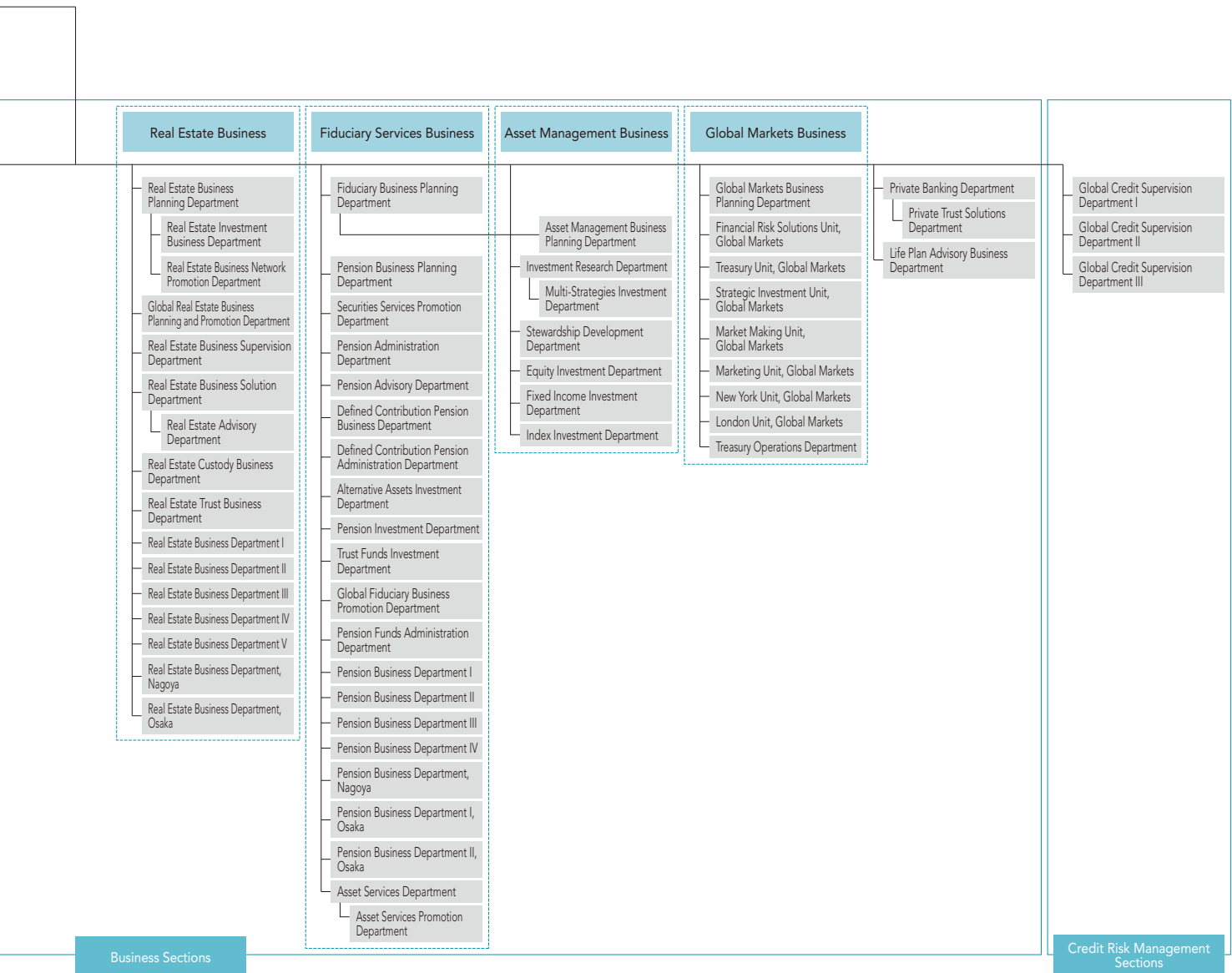
Financial Data/  
Sumitomo Mitsui Trust Holdings, Inc.

Financial Data/  
Sumitomo Mitsui Trust Bank, Limited

Basel III Disclosure Data/  
Sumitomo Mitsui Trust Holdings, Inc.

Basel III Disclosure Data/  
Sumitomo Mitsui Trust Bank, Limited





# Branches (As of June 30, 2018)

... These branches house two sales outlets under one roof, a "branch-in-a-branch" method.

## Hokkaido, Tohoku

### Sapporo Branch

1, Kita 2-jo Nishi 4-chome, Chuo-ku, Sapporo, Hokkaido 060-0002, Japan

### Sapporo-Chuo Branch

1, Kita 2-jo Nishi 4-chome, Chuo-ku, Sapporo, Hokkaido 060-0002, Japan

### Sendai Branch

1-7, Chuo 2-chome, Aoba-ku, Sendai, Miyagi 980-0021, Japan

### Sendai-Aoba Branch

1-7, Chuo 2-chome, Aoba-ku, Sendai, Miyagi 980-0021, Japan

## Tokyo

### Tokyo Business Department

4-1, Marunouchi 1-chome, Chiyoda-ku, Tokyo 100-8233, Japan

### Nihonbashi Business Department

1-1, Nihonbashi-muromachi 2-chome, Chuo-ku, Tokyo 103-0022, Japan

### Tokyo-Chuo Branch

1-1, Nihonbashi-muromachi 2-chome, Chuo-ku, Tokyo 103-0022, Japan

### Consulting Plaza Shinbashi (Shinbashi Sub-Branch, Tokyo Business Department)

20-1, Shinbashi 2-chome, Minato-ku, Tokyo 105-0004, Japan

### Toranomon Consulting Office (Toranomon Sub-Branch, Tokyo Business Department)

7-1, Nishi Shinbashi 1-chome, Minato-ku, Tokyo 105-0003, Japan

### Shiba Business Department

33-1, Shiba 3-chome, Minato-ku, Tokyo 105-8574, Japan

### Shinjuku-Nishiguchi Branch

1-4, Nishi Shinjuku 1-chome, Shinjuku-ku, Tokyo 160-0023, Japan

### Shinjuku Branch

26-11, Shinjuku 3-chome, Shinjuku-ku, Tokyo 160-0022, Japan

### Ueno Branch

19-10, Ueno 1-chome, Taito-ku, Tokyo 110-0005, Japan

### Ueno-Chuo Branch

19-10, Ueno 1-chome, Taito-ku, Tokyo 110-0005, Japan

### Meguro Branch

25-5, Kamioosaki 2-chome, Shinagawa-ku, Tokyo 141-0021, Japan

### Omori Branch

1-1, Sannou 2-chome, Ota-ku, Tokyo 143-0023, Japan

### Sangenjaya Branch

1-1, Taishido 4-chome, Setagaya-ku, Tokyo 154-0004, Japan

### Futako-Tamagawa Branch

22-12, Tamagawa 2-chome, Setagaya-ku, Tokyo 158-0094, Japan

### Consulting Plaza Seijo (Seijo Sub-Branch, Shinjuku-Nishiguchi Branch)

5-34, Seijo 6-chome, Setagaya-ku, Tokyo 157-0066, Japan

### Consulting Plaza Chitose-Karasuyama (Chitose Karasuyama Sub-Branch, Shinjuku Branch)

4-31, Minami Karasuyama 6-chome, Setagaya-ku, Tokyo 157-0062, Japan

### Shibuya Branch

3-2, Dogenzaka 2-chome, Shibuya-ku, Tokyo 150-0043, Japan

### Shibuya-Chuo Branch

22-3, Jinnan 1-chome, Shibuya-ku, Tokyo 150-0041, Japan

### Jiyugaoka Branch

10-20, Jiyugaoka 2-chome, Meguro-ku, Tokyo 152-0035, Japan

### Nakano Branch

62-5, Nakano 5-chome, Nakano-ku, Tokyo 164-0001, Japan

### Ogikubo Branch

18-10, Kamiogi 1-chome, Sugiyama-ku, Tokyo 167-0043, Japan

### Ikebukuro Branch

41-7, Higashi Ikebukuro 1-chome, Toshima-ku, Tokyo 170-0013, Japan

### Ikebukuro-Higashiguchi Branch

41-7, Higashi Ikebukuro 1-chome, Toshima-ku, Tokyo 170-0013, Japan

### Shakujii Branch

14-1, Shakujii-cho 2-chome, Nerima-ku, Tokyo 177-0041, Japan

### Kichijoji Branch

14-9, Kichijoji Hon-cho 1-chome, Musashino, Tokyo 180-0004, Japan

### Kichijoji-Chuo Branch

2-14, Kichijoji Hon-cho 2-chome, Musashino, Tokyo 180-0004, Japan

### Koganei Branch

10-1, Hon-cho 5-chome, Koganei, Tokyo 184-0004, Japan

### Tachikawa Branch

6-1, Akebono-cho 2-chome, Tachikawa, Tokyo 190-0012, Japan

### Tachikawa-Kitaguchi Branch

6-1, Akebono-cho 2-chome, Tachikawa, Tokyo 190-0012, Japan

### Hachioji Branch

9-1, Asahi-cho, Hachioji, Tokyo 192-0083, Japan

### Hachioji-Ekimaie Branch

9-1, Asahi-cho, Hachioji, Tokyo 192-0083, Japan

### Machida Branch

3-4, Haramachida 6-chome, Machida, Tokyo 194-0013, Japan

### Tama-Sakuragaoka Branch

1-5, Sekido 1-chome, Tama, Tokyo 206-0011, Japan

### Consulting Plaza Seiseki (Seiseki-Sakuragaoka Sub-Branch, Tama-Sakuragaoka Branch)

7-5, Sekido 1-chome, Tama, Tokyo 206-0011, Japan

### Consulting Plaza Tama-Center (Tama-Center Sub-Branch, Tama-Sakuragaoka Branch)

44, Ochiai 1-chome, Tama, Tokyo 206-0033, Japan

## Kanto

### Urawa Branch

12-1, Takasago 1-chome, Urawa-ku,  
Saitama 330-0063, Japan

### Omiya Branch

32, Daimon-cho 1-chome, Omiya-ku,  
Saitama 330-8511, Japan

### Omiya-Ekimae Branch

32, Daimon-cho 1-chome, Omiya-ku,  
Saitama 330-8511, Japan

### Tokorozawa Branch

3-5, Hiyoshi-cho, Tokorozawa, Saitama 359-8691, Japan

### Tokorozawa-Ekimae Branch

3-5, Hiyoshi-cho, Tokorozawa, Saitama 359-8691, Japan

### Koshigaya Branch

14-22, Yayoi-cho, Koshigaya, Saitama 343-0816, Japan

### Sugito Branch

13-12, Sugito 2-chome, Sugito-machi, Kitakatsushika-gun,  
Saitama 345-0036, Japan

### Chiba Branch

1-16, Fujimi 1-chome, Chuo-ku, Chiba 260-0015, Japan

### Chiba-Ekimae Branch

1-16, Fujimi 1-chome, Chuo-ku, Chiba 260-0015, Japan

### Ichikawa Branch

7-13, Ichikawa 1-chome, Ichikawa, Chiba 272-0034, Japan

### Funabashi Branch

3-1, Hon-cho 1-chome, Funabashi, Chiba 273-0005, Japan

### Tsudanuma Branch

14-5, Maebara Nishi 2-chome, Funabashi,  
Chiba 274-0825, Japan

### Matsudo Branch

2-1, Hon-cho, Matsudo, Chiba 271-0091, Japan

### Kashiwa Branch

1-2, Asahi-cho 1-chome, Kashiwa, Chiba 277-0852, Japan

### Yachiyo Branch

3-1, Yachiyodai Minami 1-chome, Yachiyo,  
Chiba 276-0033, Japan

### Yokohamaeki-Nishiguchi Branch

6-31, Minami Saiwai 1-chome, Nishi-ku, Yokohama, Kanagawa  
220-0005, Japan

### Yokohama Branch

6-31, Minami Saiwai 1-chome, Nishi-ku, Yokohama, Kanagawa  
220-0005, Japan

### Yokohama Housing Loan Center Sub-Branch, Yokohamaeki-Nishiguchi Branch

6-1, Kita Saiwai 1-chome, Nishi-ku, Yokohama, Kanagawa  
220-0004, Japan

### Futamatagawa Branch

3-2, Futamatagawa 1-chome, Asahi-ku, Yokohama, Kanagawa  
241-0821, Japan

### Tama-Plaza Branch

15-8, Utsukushigaoka 2-chome, Aoba-ku, Yokohama,  
Kanagawa 225-0002, Japan

### Aobadai Branch

9-2, Aobadai 2-chome, Aoba-ku, Yokohama, Kanagawa  
227-0062, Japan

### Consulting Plaza Kohoku (Kohoku Sub-Branch, Tama-Plaza Branch)

1-3, Nakagawa Chuo 1-chome, Tsuzuki-ku, Yokohama,  
Kanagawa 224-0003, Japan

### Konandai Branch

15-2-102, Konandai 3-chome, Konan-ku, Yokohama, Kanagawa  
234-0054, Japan

### Kamiooka Branch

18-5, Kamiooka Nishi 1-chome, Konan-ku, Yokohama,  
Kanagawa 233-0002, Japan

### Consulting Plaza Totsuka

#### (Totsuka Sub-Branch, Yokohamaeki-Nishiguchi Branch)

16-1, Totsuka-cho, Totsuka-ku, Yokohama,  
Kanagawa 244-0003, Japan

### Kawasaki Branch

3-1, Ekimae Hon-cho, Kawasaki-ku, Kawasaki,  
Kanagawa 210-0007, Japan

### Shin-Yurigaoka Branch

5-3, Kamiasao 1-chome, Asao-ku, Kawasaki,  
Kanagawa 215-0021, Japan

### Yokosuka Branch

3, Odaki-cho 2-chome, Yokosuka,  
Kanagawa 238-0008, Japan

### Fujisawa Branch

21-1-101, Minami Fujisawa, Fujisawa,  
Kanagawa 251-0055, Japan

### Fujisawa-Chuo Branch

21-1-101, Minami Fujisawa, Fujisawa,  
Kanagawa 251-0055, Japan

### Sagami-Ono Branch

13-7, Sagamiono 3-chome, Minami-ku, Sagamihara,  
Kanagawa 252-0303, Japan

### Atsugi Branch

5-14, Naka-cho 3-chome, Atsugi,  
Kanagawa 243-0018, Japan

### Odawara Branch

2-12, Sakae-cho 1-chome, Odawara,  
Kanagawa 250-0011, Japan

### Utsunomiya Branch

4-12, Hon-cho, Utsunomiya, Tochigi 320-0033, Japan

### Maebashi Branch

2-12, Hon-machi 2-chome, Maebashi,  
Gunma 371-0023, Japan

## Koshinetsu, Hokuriku

### Kofu Branch

17-14, Marunouchi 1-chome, Kofu,  
Yamanashi 400-0031, Japan

### Niigata Branch

1178-1, Kamiokawa-maedori Rokuban-cho, Chuo-ku,  
Niigata 951-8068, Japan

### Niigata-Chuo Branch

1178-1, Kamiokawa-maedori Rokuban-cho, Chuo-ku,  
Niigata 951-8068, Japan

### Toyama Branch

1-36, Sakura-machi 1-chome, Toyama 930-0003, Japan

### Kanazawa Branch

1-18, Kami Tsutsumi-cho, Kanazawa,  
Ishikawa 920-0869, Japan

### Kanazawa-Chuo Branch

1-18, Kami Tsutsumi-cho, Kanazawa,  
Ishikawa 920-0869, Japan

### Fukui Branch

7-1, Chuo 1-chome, Fukui 910-0006, Japan

## Tokai

### Nagoya Business Department

15-33, Sakae 3-chome, Naka-ku, Nagoya,  
Aichi 460-0008, Japan

### Nagoya-Sakae Branch

15-33, Sakae 3-chome, Naka-ku, Nagoya,  
Aichi 460-0008, Japan

### Kanayamabashi Branch

14-9, Kanayama 1-chome, Naka-ku, Nagoya,  
Aichi 460-0022, Japan

### Nagoya-Ekimae Branch

26-8, Meieki 3-chome, Nakamura-ku, Nagoya,  
Aichi 450-0002, Japan

### Meieki-Minami Branch

24-30, Meieki Minami 1-chome, Nakamura-ku, Nagoya,  
Aichi 450-0003, Japan

### Hoshigaoka Branch

106, Inoue cho, Chikusa-ku, Nagoya,  
Aichi 464-0026, Japan

### Ichinomiya Branch

7-15, Sakae 3-chome, Ichinomiya, Aichi 491-0858, Japan

### Okazaki Branch

16, Koseidori-Nishi 3-chome, Okazaki,  
Aichi 444-0059, Japan

### Toyohashi Branch

135, Ekimaeodori 1-chome, Toyohashi,  
Aichi 440-0888, Japan

### Shizuoka Branch

3-10, Koya-machi, Aoi-ku, Shizuoka 420-0852, Japan

### Shizuoka-Chuo Branch

3-10, Koya-machi, Aoi-ku, Shizuoka 420-0852, Japan

### Numazu Branch

4-2, Ote-machi 5-chome, Numazu, Shizuoka 410-0801, Japan

### Gifu Branch

3, Nagazumi-cho 2-chome, Gifu 500-8175, Japan

### Yokkaichi Branch

5-4, Suwa-cho, Yokkaichi, Mie 510-8650, Japan

## Kinki

### Osaka Business Department

5-33, Kitahama 4-chome, Chuo-ku, Osaka 540-8639, Japan

### Osaka-Chuo Branch

5-33, Kitahama 4-chome, Chuo-ku, Osaka 540-8639, Japan

### Umeda Branch

8-47, Kakuda-cho, Kita-ku, Osaka 530-0017, Japan

### Hankyu-Umeda Branch

8-47, Kakuda-cho, Kita-ku, Osaka 530-0017, Japan

### Namba Branch

1-60, Namba 5-chome, Chuo-ku, Osaka 542-0076, Japan

### Namba-Chuo Branch

1-60, Namba 5-chome, Chuo-ku, Osaka 542-0076, Japan

### Namba Housing Loan Center Sub-Branch, Namba Branch

10-70, Namba-naka 2-chome, Naniwa-ku,  
Osaka 556-0011, Japan

### Abenobashi Branch

6-1, Abenosuji 1-chome, Abeno-ku, Osaka 545-0052, Japan

### Abeno Branch

6-1, Abenosuji 1-chome, Abeno-ku, Osaka 545-0052, Japan

### Sakai Branch

59-2, Mikunigaoka Miyuki-dori, Sakai-ku, Sakai,  
Osaka 590-0028, Japan

### Consulting Plaza Izumigaoka (Semboku Sub-Branch, Sakai Branch)

2-1, Chayamadai 1-chome, Minami-ku, Sakai,  
Osaka 590-0115, Japan

### Yao Branch

6-8, Higashi Hon-machi 3-chome, Yao,  
Osaka 581-0004, Japan

### Hirakata Branch

13-20, Oka Higashi-cho, Hirakata, Osaka 573-0032, Japan

### Keihan-Hirakata Branch

13-20, Oka Higashi-cho, Hirakata, Osaka 573-0032, Japan

### Takatsuki Branch

5-20, Konya-machi, Takatsuki, Osaka 569-0804, Japan

### Ibaraki Branch

2-30, Futaba-cho, Ibaraki, Osaka 567-0829, Japan

### Toyonaka Branch

1-1, Hon-machi 1-chome, Toyonaka, Osaka 560-0021, Japan

### Senri-Chuo Branch

1-3, Shinsenri Higashi-machi 1-chome, Toyonaka,  
Osaka 560-0082, Japan

## Chugoku, Shikoku

### Ikeda Branch

1-1-134, Kureha-cho, Ikeda, Osaka 563-0048, Japan

### Kobe Branch

1-6, Goko-dori 8-chome, Chuo-ku, Kobe, Hyogo 651-0087, Japan

### Kobe-Sannomiya Branch

1-6, Goko-dori 8-chome, Chuo-ku, Kobe, Hyogo 651-0087, Japan

### Consulting Plaza Seishin-Chuo (Seishin-Chuo Sub-Branch, Kobe Branch)

9-4, Kojidai 5-chome, Nishi-ku, Kobe, Hyogo 651-2273, Japan

### Tsukaguchi Branch

15-1, Tsukaguchi-cho 1-chome, Amagasaki, Hyogo 661-0002, Japan

### Nishinomiya Branch

5-39, Takamatsu-cho, Nishinomiya, Hyogo 663-8204, Japan

### Ashiya Branch

5-2, Funado-cho, Ashiya, Hyogo 659-0093, Japan

### Kawanishi Branch

7-18, Chuo-cho, Kawanishi, Hyogo 666-0016, Japan

### Akashi Branch

5-28, Higashinakano-machi, Akashi, Hyogo 673-0886, Japan

### Himeji Branch

252, Ekimae-cho, Himeji, Hyogo 670-0927, Japan

### Kyoto Branch

612, Karasuma-dori Shijo-sagaru Suiginya-cho, Shimogyo-ku, Kyoto 600-8411, Japan

### Kyoto-Shijo Branch

612, Karasuma-dori Shijo-sagaru Suiginya-cho, Shimogyo-ku, Kyoto 600-8411, Japan

### Otsu Branch

3-10, Umebayashi 1-chome, Otsu, Shiga 520-0051, Japan

### Nara-Saidaiji Branch

1-50, Saidaiji Higashi-machi 2-chome, Nara 631-0821, Japan

### Consulting Plaza Gakuenmae (Gakuenmae Sub-Branch, Nara-Saidaiji Branch)

8-11, Gakuen Kita 1-chome, Nara 631-0036, Japan

### Wakayama Branch

3-17, Higashi Kuramae-cho, Wakayama 640-8203, Japan

### Tottori Branch

103, Ima-machi 1-chome, Tottori 680-0822, Japan

### Okayama Branch

1-5, Ekimoto-machi, Kita-ku, Okayama 700-0024, Japan

### Okayama-Chuo Branch

1-5, Ekimoto-machi, Kita-ku, Okayama 700-0024, Japan

### Okayama-Ekimae Sub-Branch, Okayama Branch

1-6, Ekimoto-machi, Kita-ku, Okayama 700-0024, Japan

### Okayama-Ekimae Sub-Branch, Okayama-Chuo Branch

1-6, Ekimoto-machi, Kita-ku, Okayama 700-0024, Japan

### Hiroshima Branch

2-22, Kamiya-cho 1-chome, Naka-ku, Hiroshima 730-0031, Japan

### Hiroshima-Chuo Branch

2-22, Kamiya-cho 1-chome, Naka-ku, Hiroshima 730-0031, Japan

### Fukuyama Branch

15-1, Moto-machi, Fukuyama, Hiroshima 720-0063, Japan

### Yamaguchi-Hofu Branch

4-24, Ebisu-machi 1-chome, Hofu, Yamaguchi 747-0036, Japan

### Takamatsu Branch

9-4, Konya-machi, Takamatsu, Kagawa 760-0027, Japan

### Matsuyama Branch

11-1, Sanban-cho 4-chome, Matsuyama, Ehime 790-0003, Japan

## Kyushu

### Fukuoka Branch

12-1, Tenjin 2-chome, Chuo-ku, Fukuoka 810-0001, Japan

### Fukuoka-Tenjin Branch

12-1, Tenjin 2-chome, Chuo-ku, Fukuoka 810-0001, Japan

### Kita-Kyushu Branch

1-5, Kaji-machi 1-chome, Kokurakita-ku, Kita-Kyushu, Fukuoka 802-0004, Japan

### Saga Branch

3-2, Matsubara 1-chome, Saga 840-0831, Japan

### Kumamoto Branch

2-5, Tetori Hon-cho, Chuo-ku, Kumamoto 860-0808, Japan

### Kumamoto-Chuo Branch

2-5, Tetori Hon-cho, Chuo-ku, Kumamoto 860-0808, Japan

### Oita Branch

3-23, Chuo-machi 1-chome, Oita 870-0035, Japan

### Kagoshima Branch

7-8-101, Kinsei-cho, Kagoshima 892-0828, Japan

## Overseas Network

### Branch

#### New York Branch

1251 Avenue of the Americas, New York, NY 10020, U.S.A.

#### London Branch

155 Bishopsgate, London EC2M 3XU, U.K.

#### Singapore Branch

One Raffles Quay, #24-01 North Tower, Singapore 048583

#### Shanghai Branch

50F Jin Mao Tower, 88 Shiji Dadao Pudong New Area, Shanghai 200121, People's Republic of China

#### Hong Kong Branch

25/F, AIA Central, 1 Connaught Road, Central, Hong Kong

### Representative Office

#### Beijing Representative Office (Banking business)

Room 7009, 7th Floor, Chang Fu Gong Office Building, No. 26, Jianguomenwai Dajie, Chaoyang District, Beijing 100022, People's Republic of China

#### Beijing Representative Office (Securities business)

Room 5011, 5th Floor, Chang Fu Gong Office Building, No. 26, Jianguomenwai Dajie, Chaoyang District, Beijing 100022, People's Republic of China

#### Jakarta Representative Office

20th Floor, Summitmas I, Jl. Jend. Sudirman, Kaveling 61-62, Jakarta 12190, Indonesia

#### Seoul Representative Office

20th Floor, Booyoung Taepyoung Building, 55, Sejong-daero, Jung-gu, Seoul 04513, Korea



# Number of Contracted Trust Agencies\* (As of June 30, 2018)

\*Trust Agency is a collective term that refers to trust contract agencies under the Trust Business Act as well as agencies concurrently engaged in trust business under Article 1 of the Act on Provision, etc. of Trust Business by Financial Institutions.

Type		Number of Agencies				
		Trust Contract Agencies	Agencies Engaged in Concurrent Business			
			Stock Transfer Agency Service	Service Related to Wills	Solicitation for National Pension Fund	Discretionary Investment Business
Banks, Shinkin Banks, etc.	100	68	43	69	45	1
Regional Banks	41	39	30	29	16	1
Second Regional Banks	17	13	7	13	10	—
Shinkin Central Bank, Shinkin Banks	34	13	3	21	19	—
Credit Union	4	—	—	4	—	—
Shoko Chukin Bank	1	1	—	1	—	—
City Banks, etc.	3	2	3	1	—	—
Securities Firms	7	1	4	7	—	—
Life Insurers and Business Enterprises	16	2	1	16	—	—
Total	123	71	48	92	45	1

## Bank Service Agency (As of June 30, 2018)

Trade Name of Bank Service Agency	SBI Sumishin Net Bank, Ltd.
Business Offices, etc. Operating Bank Agency Service	Head Office, East Japan Operation Center, West Japan Operation Center, Ichigo Branch, Budou Branch, Mikan Branch, Lemon Branch, Ringo Branch (8 Branches)

# Subsidiaries and Affiliated Companies (As of June 30, 2018)

## Japan

Name	Location	Date of Establishment	Paid-in Capital (Millions)	Scope of Business	Ownership by SuMi TRUST Bank (%)	Ownership by subsidiaries (%)
Tokyo Securities Transfer Agent Co., Ltd.	11, Kanda-nishikicho 3-chome, Chiyoda-ku, Tokyo	November 1, 1962	¥ 50	Stock Transfer Agency Services	100.0	—
Sumitomo Mitsui Trust Club Co., Ltd.	8-10, Harumi 1-chome, Chuo-ku, Tokyo	April 2, 1977	¥ 100	Credit Card Business	100.0	—
Sumitomo Mitsui Trust Guarantee Co., Ltd.	33-1, Shiba 3-chome, Minato-ku, Tokyo	July 10, 1978	¥ 301	Housing Loan Guaranty Business	100.0	—
Sumitomo Mitsui Trust General Service Co., Ltd.	33-1, Shiba 3-chome, Minato-ku, Tokyo	April 2, 1988	¥ 100	Property Leasing and Management Business	100.0	—
Sumitomo Mitsui Trust Wealth Partners Co., Ltd.	6-1, Marunouchi 1-chome, Chiyoda-ku, Tokyo	November 6, 1989	¥ 155	Consulting Business	100.0	—
Sumitomo Mitsui Trust Business Service Co., Ltd.	33-1, Shiba 3-chome, Minato-ku, Tokyo	May 24, 1990	¥ 100	Back Office Services, Temporary Staffing Business, Outplacement Agency	100.0	—
Sumitomo Mitsui Trust Loan & Finance Co., Ltd.	20-1, Shinbashi 2-chome, Minato-ku, Tokyo	January 22, 1992	¥ 6,000	Money Lending Business	100.0	—
Sumitomo Mitsui Trust TA Solution Co., Ltd.	8-4, Izumi 2-chome, Suginami-ku, Tokyo	July 1, 1998	¥ 2,005	IT, Calculation Outsourcing Business	100.0	—
Sumitomo Mitsui Trust Real Estate Investment Management Co., Ltd.	11-1, Kanda-nishikicho 3-chome, Chiyoda-ku, Tokyo	November 7, 2005	¥ 300	Investment Management, Investment Advisory	100.0	—
Sumitomo Mitsui Trust Career Partners Co., Ltd.	4-1, Marunouchi 1-chome, Chiyoda-ku, Tokyo	April 3, 2006	¥ 100	Training Programs, Personnel-related Services	100.0	—
Nikko Asset Management Co., Ltd.	7-1, Akasaka 9-chome, Minato-ku, Tokyo	December 1, 1959	¥ 17,363	Investment Management, Investment Advisory	91.9	—
Japan Securities Agents, Ltd.	2-4, Nihonbashi-kayabacho 1-chome, Chuo-ku, Tokyo	September 13, 1950	¥ 500	Stock Transfer Agency Services	85.1	—
Sumitomo Mitsui Trust Panasonic Finance Co., Ltd.	2-3, Shibaura 1-chome, Minato-ku, Tokyo	February 27, 1967	¥ 25,584	General Leasing, Installment Purchase Services, Credit Card Business	84.8	—
Sumishin Guaranty Company Limited	33-1, Shiba 3-chome, Minato-ku, Tokyo	August 25, 1977	¥ 300	Loan Guarantee Business	—	100.0
Sumitomo Mitsui Trust Card Co., Ltd.	33-1, Shiba 3-chome, Minato-ku, Tokyo	June 24, 1983	¥ 100	Credit Card Business	50.0	50.0
Sumitomo Mitsui Trust Systems & Services Co., Ltd.	1-10, Nikko-cho, Fuchu, Tokyo	February 12, 1973	¥ 100	System Development and Operation Management Services	44.4	55.6
Sumitomo Mitsui Trust Investment Co., Ltd.	33-1, Shiba 3-chome, Minato-ku, Tokyo	March 22, 2000	¥ 100	Equity Investment Business	40.0	60.0
Sumitomo Mitsui Trust Realty Co., Ltd.	11-1, Kanda-nishikicho 3-chome, Chiyoda-ku, Tokyo	January 24, 1986	¥ 300	Real Estate Brokerage Business	4.7	95.3
SBI Sumishin Net Bank, Ltd.	6-1, Roppongi 1-chome, Minato-ku, Tokyo	June 3, 1986	¥ 31,000	Banking Business	50.0	—
Japan Pension Operation Service, Ltd.	24-1, Nihonbashi-hakozakicho, Chuo-ku, Tokyo	December 21, 2004	¥ 100	Calculation of Pension Payments, etc., Clerical Outsourcing Business	50.0	—
Japan Stockholders Data Service Company, Limited	8-4, Izumi 2-chome, Suginami-ku, Tokyo	April 1, 2008	¥ 2,000	Stock Transfer Outsourcing Business	50.0	—
HR One Corporation	5-12, Tsukiji 5-chome, Chuo-ku, Tokyo	May 20, 2002	¥ 603	HR-related Services Business	33.4	—
Sky Ocean Asset Management Co., Ltd.	1-1, Minatomirai 3-chome, Nishi-ku, Yokohama, Kanagawa	November 25, 2014	¥ 300	Investment Management	21.0	—
JP Asset Management Co., Ltd.	5-11, Nihonbashi-honcho 1-chome, Chuo-ku, Tokyo	August 18, 2015	¥ 500	Investment Management	30.0	—
Mitsui & Co., Logistics Partners Ltd.	2-1, Nishi-kanda 3-chome, Chiyoda-ku, Tokyo	July 13, 2004	¥ 150	Investment Corporation, Asset Management Business	20.0	—
Cardif Assurance Vie (Japan)	20-1, Sakuragaoka-cho, Shibuya-ku, Tokyo	July 3, 2017	¥ 20,600	Life Insurance Business	20.0	—

## Overseas

Name	Location	Date of Establishment	Paid-in Capital (Millions)	Scope of Business	Ownership by SuMi TRUST Bank (%)	Ownership by subsidiaries (%)
Sumitomo Mitsui Trust (Hong Kong) Limited	25/F, AIA Central, 1 Connaught Road, Central, Hong Kong	July 4, 1978	\$ 45	Securities Business	100.0	—
Sumitomo Mitsui Trust Bank (Luxembourg) S.A.	2, rue Peterelchen, L-2370, Howald, Grand Duchy of Luxembourg	April 22, 1985	\$ 30	Trust, Banking, Securities Businesses	100.0	—
Sumitomo Mitsui Trust (UK) Limited	155 Bishopsgate, London EC2M 3XU, U.K.	March 6, 1986	£ 1.78	Trust Business	100.0	—
Sumitomo Mitsui Trust International Limited	155 Bishopsgate, London EC2M 3XU, U.K.	July 2, 1986	£ 20	Securities Business	100.0	—
Sumitomo Mitsui Trust Bank (U.S.A.) Limited	111 River Street, Hoboken, NJ 07030, U.S.A.	May 20, 2002	\$ 56	Banking, Trust Businesses	100.0	—
Sumitomo Mitsui Trust (Ireland) Limited	Block 5, Harcourt Centre, Harcourt Road, Dublin 2, Ireland	June 1, 2004	€ 75.87	Trust Business	100.0	—
Sumitomo Mitsui Trust Bank (Thai) Public Company Limited	32nd Floor, Sathorn Square Office Tower, 98 North Sathorn Road, Silom, Bangrak, Bangkok 10500, Thailand	July 7, 2014	THB 20,000	Banking Business	99.9	0.0
STB Finance Cayman Limited	PO Box 309, Uglad House, Grand Cayman, KY1-1104, Cayman Islands	January 19, 1993	\$ 0.01	Finance Business	100.0	—
STB Preferred Capital 4 (Cayman) Limited	PO Box 309, Uglad House, Grand Cayman, KY1-1104, Cayman Islands	May 26, 2008	¥ 111,600	Finance Business	100.0	—
BIDV-SuMi TRUST Leasing Co., Ltd.	20th Floor, Vincom Tower A, 191 Ba Trieu, Hai Ba Trung district, Ha Noi, Vietnam	September 4, 1998	VND 895,600	Leasing Business in Vietnam (including sales finance lease)	49.0	—
Zijin Trust Co., Ltd.	30th Floor, Zifeng Tower, 2 Zhongshan Road(N), Gulou District, Nanjing, Jiangsu Province, 210008, People's Republic of China	September 25, 1992	RMB 2,400	Trust Business	19.9	—
Nanjing Zijin Financial Leasing Co., Ltd.	9th Floor, 309, Hanzhongmendajie, Gulou District, Nanjing, Jiangsu Province, 210036, People's Republic of China	May 20, 2016	RMB 300	Leasing Business	15.0	5.0
Midwest Railcar Corporation	855 Arbor Vitae Edwardsville, IL 62025, U.S.A.	December 31, 1998	\$ 0.47	Freight Railcar Operating Leasing Business in North America	—	100.0*

\* The ownership by subsidiaries is the ownership ratio held by the U.S.-based company in which SuMi TRUST Bank has a 19.9% stake and SuMi TRUST Bank's subsidiaries have a 30.1% stake.