

# Directors, Corporate Auditors and Executive Officers

As of August 1, 2008

## Chuo Mitsui Trust Holdings, Inc.

### Chairman of the Board

Kiichiro Furusawa\*

### President

Kazuo Tanabe\*

### Deputy President

Tomohiro Ito\*

### Senior Managing Directors

Jun Okuno

Ken Sumida

### Director

Tadashi Kawai

### Corporate Auditors

Kimihiko Funahashi

Hiroaki Sasaki

Shigenori Koda

Yasuhiro Yonezawa

Yasuhiko Takano

### Senior Executive Officer

Nobuo Iwasaki

### Executive Officer

Masaru Hashimoto

\* Representative directors

## The Chuo Mitsui Trust and Banking Company, Limited

### President

Kazuo Tanabe\*

### Deputy President

Masaharu Kodaka\*

### Corporate Auditors

Junichi Sahara

Shigenori Koda

Yasuhiko Takano

### First Senior Executive Officers

Itaru Masuda\*\*

Jun Okuno

Ken Sumida

### Senior Executive Officers

Tetsuji Tada

Kunitaro Kitamura

Mamoru Kawakami

Nobuo Iwasaki

Shunichi Sakata

Taro Kiritani

Naoya Shoji

Takashi Kamikanda

Yoichi Nakae

### Executive Officers

Katsuhiko Kudo

Tetsuo Amano

Yoshiki Kiyono

Shinji Ochiai

Yutaka Takei

Takuya Miyazaki

Hiroyuki Okudaira

Toshiyuki Ueki

\* Representative directors

\*\* Directors

## Chuo Mitsui Asset Trust and Banking Company, Limited

### President

Tadashi Kawai\*

### Senior Executive Officer

Koichi Suzuki\*\*

Yasuo Kuwana\*\*

### Corporate Auditors

Hiroaki Sasaki

Norihide Kirihara

Yasuhiro Yonezawa

### Executive Officers

Yasuhiro Wakasa

Satoshi Yamamoto

Seigo Kimoto

Hiroshi Misawa

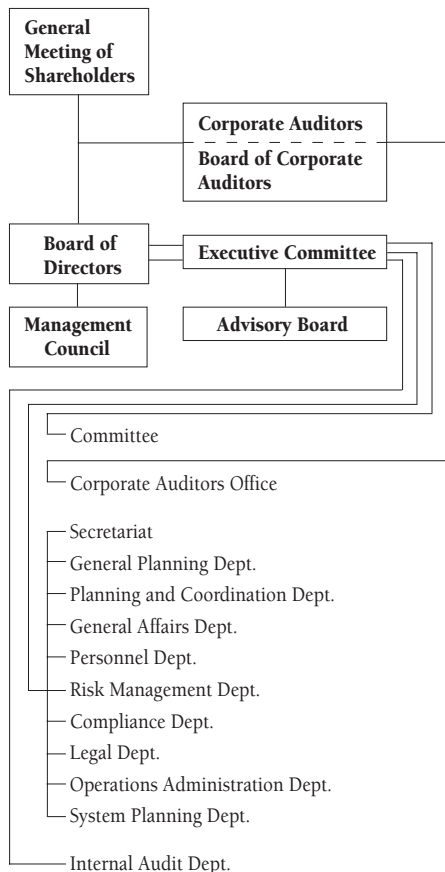
\* Representative director

\*\* Directors

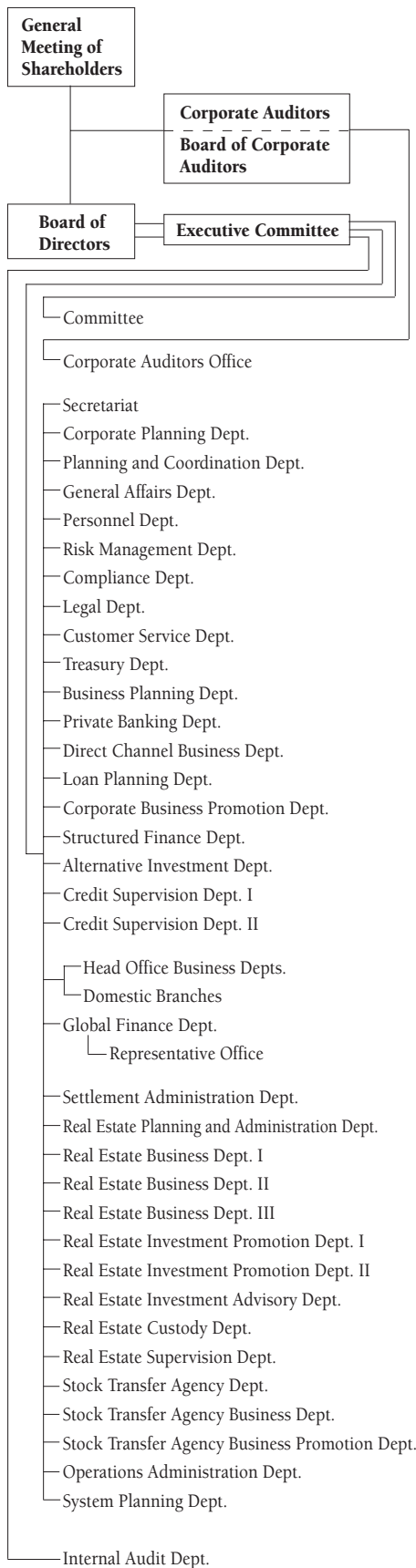
# Organization

As of August 1, 2008

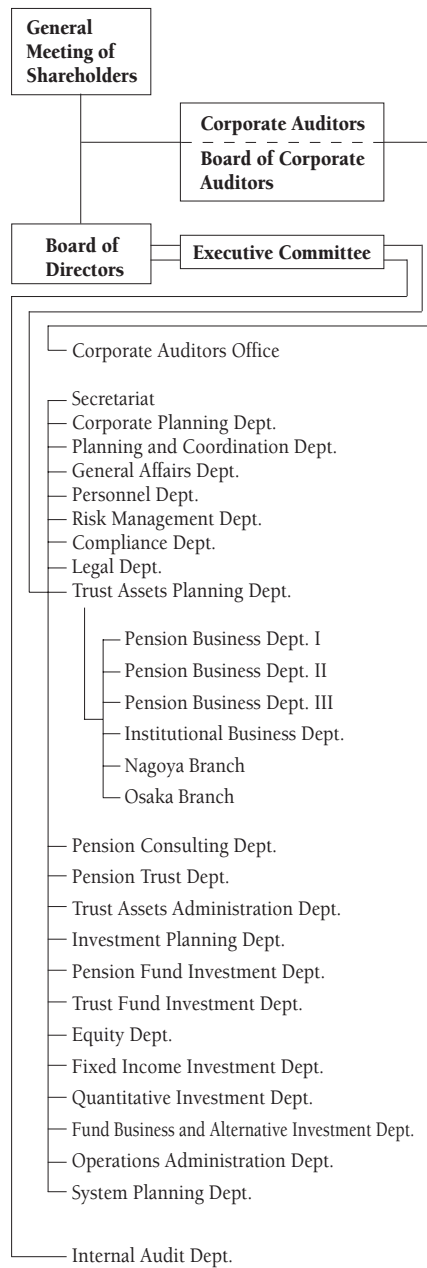
## Chuo Mitsui Trust Holdings, Inc.



## The Chuo Mitsui Trust and Banking Company, Limited



## Chuo Mitsui Asset Trust and Banking Company, Limited



## Major Associated Companies

As of August 1, 2008

### Chuo Mitsui Trust Holdings, Inc.

	Services	Capital (Millions of yen)
Japan Trustee Services Bank, Ltd.	Trust and banking	51,000

### The Chuo Mitsui Trust and Banking Company, Limited

	Services	Capital (Millions of yen)
Chuo Mitsui Guarantee Co., Ltd.	Credit guarantee services	301
Chuo Mitsui Card Co., Ltd.	Credit card services	300
Chuo Mitsui Realty Co., Ltd.	Real estate brokerage	300
Chuo Mitsui Stock Transfer Agency Business Co., Ltd.	Stock transfer agency services	6,000
Chuo Mitsui Information Technology Co., Ltd.	Computer-related services	200
CMTB Equity Investments Co., Ltd.	Investment, management and administration of stocks	100
Chuo Mitsui Finance Service Co., Ltd.	Finance	500
Tokyo Securities Transfer Agent Co., Ltd.	Stock transfer agency services	45

## Overseas Network

As of August 1, 2008

### Representative Offices

#### The Chuo Mitsui Trust and Banking Company, Limited

##### New York Representative Office

Akihiko Koda  
Chief Representative  
655 Third Avenue, 26th Floor  
New York, N.Y. 10017-5617, U.S.A.  
Telephone: 1-212-309-1900  
Telefax: 1-212-599-1726

##### Singapore Representative Office

Takeyasu Koike  
Chief Representative  
8 Shenton Way  
#14-02  
Singapore 068811  
Republic of Singapore  
Telephone: 65-6532-2353  
Telefax: 65-6532-6155

##### Beijing Representative Office

Hiroo Tamura  
Chief Representative  
Room 5011, 5th Floor,  
Chang Fu Gong Office Building,  
No. 26, Jianguomenwai Dajie,  
Chaoyang District, Beijing 100022,  
People's Republic of China  
Telephone: 86-10-6559-8556  
Telefax: 86-10-6559-8592

### Overseas Subsidiaries

#### Chuo Mitsui Trust Holdings, Inc.

##### MTH Preferred Capital 1 (Cayman) Limited

P.O. Box 309, Ugland House,  
Grand Cayman KYI-1104,  
Cayman Islands

##### MTH Preferred Capital 3 (Cayman) Limited

P.O. Box 309, Ugland House,  
Grand Cayman KYI-1104,  
Cayman Islands

##### MTH Preferred Capital 4 (Cayman) Limited

P.O. Box 309, Ugland House,  
Grand Cayman KYI-1104,  
Cayman Islands

##### MTH Preferred Capital 5 (Cayman) Limited

P.O. Box 309, Ugland House,  
Grand Cayman KYI-1104,  
Cayman Islands

##### CMTH Preferred Capital 6 (Cayman) Limited

P.O. Box 309, Ugland House,  
Grand Cayman KYI-1104,  
Cayman Islands

#### The Chuo Mitsui Trust and Banking Company, Limited

##### Chuo Mitsui Investments, Inc.

Hajime Kobayashi  
President & CEO  
655 Third Avenue, 26th Floor,  
New York, N.Y. 10017-5617, U.S.A.  
Telephone: 1-212-309-1920  
Telefax: 1-212-599-2128

##### Chuo Mitsui Investments Singapore Pte. Ltd.

Mitsunobu Okuda  
Managing Director  
8 Shenton Way  
#14-02  
Singapore 068811  
Republic of Singapore  
Telephone: 65-6220-9527  
Telefax: 65-6220-9528

##### Chuo Mitsui Trust International Ltd.

Hisanori Ito  
Managing Director  
7th Floor, Triton Court  
14 Finsbury Square  
London EC2A 1BR, U.K.  
Telephone: 44-20-7847-8400  
Telefax: 44-20-7847-8500

# Investor Information

As of March 31, 2008

## Chuo Mitsui Trust Holdings, Inc.

### Registered Head Office

33-1, Shiba 3-chome,  
Minato-ku, Tokyo 105-8574, Japan  
Telephone: 81-3-5445-3500  
Telefax: 81-3-5232-8879  
Web site: <http://www.chuomitsui.jp>

### Date of Establishment

February 1, 2002

### Capital Stock

¥261,608 million

### Number of Shares Authorized

4,338,488 thousand shares  
Common: 4,068,332 thousand shares  
Class II preferred: 93,750 thousand shares  
Class III preferred: 31,468 thousand shares\*

### Number of Shares Issued

Common: 1,157,551 thousand\*  
Class II preferred: 93,750 thousand  
Class III preferred: 31,468 thousand\*

### Number of Shareholders

Common: 29,800 (The number of shareholders holding only fractional shares is excluded.)

Preferred: 1

\* The number of Class III shares reflects the changes as a result of share repurchase and cancellation, as well as secondary offering of shares of our common stock conducted in July 2008. (54,000 thousand shares were repurchased and cancelled, and 47,812.5 thousand shares were converted into 172,000 thousand shares of common stock.)

## Company Information

### The Chuo Mitsui Trust and Banking Company, Limited

#### Registered Head Office

33-1, Shiba 3-chome,  
Minato-ku, Tokyo 105-8574, Japan  
Telephone: 81-3-5232-3331  
Telefax: 81-3-5232-8879  
Telex: TRUSTMIT J26397  
S.W.I.F.T. Address: MTRB JPJT  
Web site: <http://www.chuomitsui.co.jp>

## Major Shareholders

### (a) Common stock

Name	Number of shares held (Thousands)	Percentage of total shares (%)
JP Morgan Chase Bank 380055	94,166	9.53
Japan Trustee Services Bank, Ltd. (Trust account)	55,971	5.66
The Master Trust Bank of Japan, Ltd. (Trust account)	33,631	3.40
Goldman Sachs International	24,145	2.44
Morgan Stanley & Company Inc.	18,589	1.88
Japan Trustee Services Bank, Ltd. (Re-trusted by Chuo Mitsui Asset Trust and Banking Co., Ltd. Composite trust account held for Toyota Motor Corporation)	15,226	1.54
State Street Bank and Trust Company 505103	14,604	1.47
Mitsui Life Insurance Company Limited	13,648	1.38
Tobu Railway Co., Ltd.	13,355	1.35
Japan Trustee Services Bank, Ltd. (Re-trusted by Chuo Mitsui Asset Trust and Banking Co., Ltd. Composite trust account held for Nagoya Railroad Co., Ltd.)	10,060	1.01
Total	<u>293,395</u>	<u>29.66</u>

(b) The Resolution and Collection Corporation maintains all of the Company's preferred stocks.

Stock type	Number of shares held (Thousands)	Percentage of total shares (%)
Class II	93,750	100.00
Class III*	31,468	100.00

### Certified Public Accountants

Deloitte Touche Tohmatsu  
(a Japanese member firm of Deloitte Touche Tohmatsu, a Swiss Verein)  
MS Shibaura Building  
13-23, Shibaura 4-chome  
Minato-ku, Tokyo 108-8530, Japan

### Further Information

For further information, please contact:  
Investor Relations Group  
General Planning Department  
Chuo Mitsui Trust Holdings, Inc.  
33-1, Shiba 3-chome,  
Minato-ku, Tokyo 105-8574, Japan

### Chuo Mitsui Asset Trust and Banking Company, Limited

#### Registered Head Office

23-1, Shiba 3-chome,  
Minato-ku, Tokyo 105-8574, Japan  
Telephone: 81-3-5232-8111  
Telefax: 81-3-5232-8506  
Web site: <http://www.chuomitsui-asset.co.jp>

## Disclosure Policy

Financial institutions have a social responsibility and a public mission to uphold. Well aware of the importance of this task, Chuo Mitsui Trust Group actively executes disclosure of business data to elicit greater confidence from investors and shareholders.

Chuo Mitsui Trust Holdings prioritizes a high level of management transparency. This basic principle guides the Company in providing timely, fair and unembellished information on the activities of the entire Group.

Chuo Mitsui Trust Holdings utilizes the Internet to disclose a wide range of investor relations (IR) information. The Company's Web site grants access to a page that links to materials prepared for domestic institutional investor information

meetings as well as an audiovisual presentation of the actual information meetings.

The Company provides English translations of the Japanese originals. The Company also maintains a page designed specifically for individual investors to ensure thorough access to IR information by all investors.

The companies under the Group umbrella, including Chuo Mitsui and Chuo Mitsui Asset also have their own Web sites, through which each company presents a wide range of information about respective products and services.

Ongoing efforts to provide clients and shareholders with various disclosure materials will promote a deeper understanding of Chuo Mitsui Trust Group.



Chuo Mitsui Trust Holdings, Inc.  
<http://www.chuomitsui.jp/english/>





Chuo Mitsui Trust Group



Chuo Mitsui Trust Group