

CORPORATE GOVERNANCE

Last updated: December 11, 2018
Sumitomo Mitsui Trust Holdings, Inc.
Director, President: Tetsuo Ohkubo
Inquiries: 03-6256-6000
Securities Code No.: 8309
<https://www.smth.jp/en/>

The status of the corporate governance of Sumitomo Mitsui Trust Holdings, Inc. (“SuMi TRUST Holdings”) is described below.

I. Fundamental Perspectives on Corporate Governance, Capital Structure, Corporate Profile, and Other Basic Information

1. Fundamental Perspectives (Updated)

(1) Fundamental Perspectives on Corporate Governance

SuMi TRUST Holdings has established and posted on its website a “Basic Policy on Corporate Governance,” a set of corporate governance guidelines aiming to contribute to sustainable growth and medium- to long-term enhancement of the corporate value of Sumitomo Mitsui Trust Group (the “SuMi TRUST Group”).
https://www.smth.jp/en/about_us/management/governance/policy.pdf
In order to adhere to the principles of sound management based on a high degree of self-discipline with the background of fiduciary spirit and establish strong credibility from society, SuMi TRUST Holdings commits itself to enhancing its corporate governance system in line with the following fundamental perspectives:

- SuMi TRUST Holdings shall respect shareholder rights, and endeavor to develop an environment in which shareholders can exercise their rights appropriately and effectively, and to secure effective equal treatment of shareholders.
- By recognizing the importance of its social responsibilities and public mission, SuMi TRUST Holdings shall endeavor to appropriately cooperate with its stakeholders such as shareholders, customers, employees, business partners, and local communities, and to establish corporate culture and climate where it conducts sound business operations based on a high degree of self-discipline.
- In order to establish the basis for constructive dialogue with its stakeholders, SuMi TRUST Holdings shall separately set out its Disclosure Policy, and endeavor to appropriately disclose corporate information, including non-financial information, and ensure the transparency of its corporate management.
- As a financial holding company with the function of managing the business administration of the SuMi TRUST Group, SuMi TRUST Holdings shall adopt the institutional design of the Company with Three Committees and, by separating execution and supervision of business, shall endeavor to ensure the Board of Directors’ role of effective oversight.
- SuMi TRUST Holdings shall engage in constructive dialogue with its stakeholders in order to contribute to sustainable growth and medium- to long-term enhancement of the corporate value of SuMi TRUST Holdings.

(2) Role and Function of SuMi TRUST Holdings in the SuMi TRUST Group
In the SuMi TRUST Group, SuMi TRUST Holdings determines the management policies and business models of the entire Group and disseminates them to each Group company, while at the same time, takes responsibility for the following functions, in an effort to fulfill its role of group management that allows each company to realize the respective management plans that have been formulated in accordance with such policies.

<<Formulating group management strategy>>

SuMi TRUST Holdings adjusts the business strategies of Sumitomo Mitsui Trust Bank, Limited (“SuMi TRUST Bank”) and other subsidiaries, which it directly owns (collectively referred to in this report as the “Directly Owned Subsidiaries”), and creates management strategies to maximize the profits of the entire SuMi TRUST Group, as well as shareholder value.

<<Monitoring administration of business activities>>

While the Directly Owned Subsidiaries take responsibility for the operation of their own business activities, SuMi TRUST Holdings engages in activities that include (i) monitoring the Directly Owned Subsidiaries’ operation of business activities in order to, among other things, ensure its consistency with the group strategies and (ii) understanding the performance of each business activity.

<<Allocating management resources>>

SuMi TRUST Holdings allocates the SuMi TRUST Group’s management resources (personnel, expenses, investment in systems, capital, etc.), and monitors the usage of management resources at the Directly Owned Subsidiaries.

<<Supervising risk management>>

SuMi TRUST Holdings creates the basic risk management policy for the entire SuMi TRUST Group and, among other things, monitors the risk management activities of the Directly Owned Subsidiaries.

<<Supervising compliance management>>

SuMi TRUST Holdings creates the basic policy for SuMi TRUST Group’s corporate ethics and compliance standards as action guidelines for officers and employees and, among other things, monitors compliance of the Directly Owned Subsidiaries.

<<Managing internal auditing>>

SuMi TRUST Holdings creates the basic policy on the internal auditing of the entire SuMi TRUST Group, and engages in activities such as understanding, among other things, the Directly Owned Subsidiaries’ preparedness for internal audits and giving instructions necessary for the Directly Owned Subsidiaries.

【Reasons for not implementing each principle of the Corporate Governance Code】

SuMi TRUST Holdings implements every principle of the amended Corporate Governance Code which was announced in June 1, 2018.

【Disclosure based on each principle of the Corporate Governance Code】 (Updated)

[Principle 1-4]

<Policies Regarding Strategic Shareholdings>

- The SuMi TRUST Group shall not acquire and hold the shares, etc. of its

business counterparty, etc. (the “Strategic Shareholdings”), except in the case where it is deemed that such acquisition and holding will contribute to medium- to long-term enhancement of the corporate value of the SuMi TRUST Group, from the perspective of, among other things, establishing a stable transactional relationship over the long-term, business alliance, or facilitating or reinforcing collaborative business development with the business counterparty, in principle.

- Regarding each of the Strategic Shareholdings, the Board of Directors shall examine the correlation between benefits/risks and cost of capital of those shareholdings in light of the aspect of maintaining and enhancing the overall relationship with the business counterparties, and verify the appropriateness of those shareholdings, etc.
- In principle, the SuMi TRUST Group shall sell the Strategic Shareholdings in the case where the significance and rationality of holding them is not observed, after taking into consideration various factors, including the impact of selling the shares on the stock market.

<Plan for Reduction of Strategic Shareholdings>

- SuMi TRUST Holdings shall aim to reduce the ratio of Strategic Shareholdings to Common Equity Tier 1 Capital (excluding valuation difference on available-for-sale securities) of 42% as of the end of March 2016 by half in approximately five years starting from fiscal year 2016.
- Results of reduction: Reduction of 35.2 billion yen in fiscal year 2017 (Total of 67.4 billion yen in the two years from fiscal year 2016 under the current plan), ratio of Strategic Shareholdings to Common Equity Tier 1 Capital of 35% as of the end of March 2018

<Examination of Significance and Rationality of Strategic Shareholdings>

- In accordance with profitability standards, SuMi TRUST Holdings carefully observes and examines the relationship between the benefits/risks and the capital costs of Strategic Shareholdings based on the following indicators.
 - Profitability indicators
(Profit after deduction for credit costs/expenses) ÷ (Equity risk-weighted assets + credit risk-weighted assets)
- Regarding shares of the business counterparties that do not meet profitability standards, if the necessity for holding the shares is recognized from the comprehensive standpoint of maintaining and enhancing the relationship with the business counterparties, SuMi TRUST Holdings shall conduct negotiations to enhance and improve profitability. If the necessity of shareholdings cannot be recognized, SuMi TRUST Holdings shall conduct negotiations to sell the shares.
- As of the end of March 2018, approximately 20% of the book value of the Strategic Shareholdings did not meet profitability standards.

<Standards for Voting on Strategic Shareholdings>

- SuMi TRUST Holdings and SuMi TRUST Bank, which is a core subsidiary of SuMi TRUST Holdings, shall decide to vote for or against each agenda and exercise voting rights pertaining to the Strategic Shareholdings (the “Voting Rights”), after comprehensively taking into consideration the business conditions, etc. of the issuing company of the Strategic Shareholdings (the “Issuing Company”), as well as the impact to sustainable growth and medium- to long-term enhancement of the corporate value of the Issuing Company and the SuMi TRUST Group.
- In the case that SuMi TRUST Holdings or SuMi TRUST Bank is required to pay special attention upon the exercise of Voting Rights due to a long-term

downturn of business conditions, a reorganization, or an occurrence of significant compliance violations, etc. of the Issuing Company, SuMi TRUST Holdings or SuMi TRUST Bank shall decide to vote for or against each agenda, by paying attention to the agendas especially listed below, after collecting enough information through a variety of methods including engaging in dialogue with the Issuing Company.

(Agenda regarding the distribution of surplus, appointment of directors and corporate auditors, grant of retirement benefits to corporate auditors, etc., organizational restructuring, MBOs, etc.)

- In the case that there is a risk of conflicts of interest upon the exercise of the Voting Rights, SuMi TRUST Holdings and SuMi TRUST Bank shall properly deal with the risk pursuant to the Management Policy Concerning Conflicts of Interest prescribed separately.

[Supplementary Principle 1-4-1]

<Policy When Strategic Shareholders Indicate Their Intention to Sell Their Shares>

When strategic shareholders indicate their intention to sell, etc. their shares, SuMi TRUST Holdings shall not hinder their selling by, for instance, implying a possible reduction of business transactions.

[Principle 1-7]

<Management System of Related Party Transactions>

SuMi TRUST Holdings sets out in Article 13 (Management System of Related Party Transactions) of the “Basic Policy on Corporate Governance” that when the SuMi TRUST Group engages in transactions with its officers or major shareholders, etc., the transactions shall be referred to the Board of Directors for prior approval, in order to ensure that such transactions do not harm, among other interests, the interests of the SuMi TRUST Group or the common interests of its shareholders, except where the trading terms are obviously equivalent to those of general transactions. In addition, SuMi TRUST Holdings separately prescribes, and discloses an outline of, the Management Policy Concerning Conflicts of Interest pursuant to laws, etc. in order to ensure that the interests of its customers are not unfairly harmed, and appropriately manages transactions that may give rise to a conflict of interest pursuant to this policy.

[Supplementary Principle 2-2-1]

<Review of the Status of Implementation of Company Conduct Standards>

SuMi TRUST Holdings conducts an awareness survey and compliance survey on the SuMi TRUST Group’s employees each year. The questions cover employees’ satisfaction, sense of burden, corporate outlook, recognition of the current state of their jobs, superiors, workplaces and company and other matters. The results of the survey are compiled and reported to the Board of Directors, which shares information about the state of compliance with conduct standards, SuMi TRUST Holdings’ corporate culture and others.

[Principle 2-3]

<Sustainability Issues, Including Social and Environmental Matters>

In order to appropriately address issues surrounding sustainability as management themes, the SuMi TRUST Group has identified priority issues (materiality) based on opinions of external directors and corporate auditors, as well as external experts. The SuMi TRUST Group will strengthen its countermeasures toward these issues at the practical level. In addition, the SuMi TRUST Group will position these issues as management issues to be addressed in creating values that are shared with the

society, and multilaterally discuss themes of high priority at the Board of Directors level with the aim of supporting long-term enhancement of corporate value.

[Principle 2-6]

<Demonstration of Functions as Asset Owners of Corporate Pension Funds>

In February 2016, the SuMi TRUST Bank Pension Fund announced its policy to accept Japan's Stewardship Code. Accordingly, the SuMi TRUST Bank Pension Fund dispatches experienced corporate pension managers from the Group as Pension Management Directors to fulfill its role as an asset owner of corporate pension funds to support stewardship activities.

Regarding the management of conflicts of interest which have possibly occurred between beneficiaries of corporate pension and companies, the SuMi TRUST Bank Pension Fund works to ensure that the interests of the beneficiaries are maximized in accordance with the Basic Management Policy, which has been set forth based on the guidelines of the Ministry of Health, Labour and Welfare. In specific terms, the SuMi TRUST Bank Pension Fund enhances the value of pension assets through the selection and monitoring of management institutions (including stewardship activities such as the exercise of voting rights). Furthermore, a system is in place in which the Asset Management Committee, which comprises investment professionals, and the Board of Representatives, the majority of which comprises representatives of the beneficiaries, examine, as necessary, whether the management is being made in accordance with the Basic Management Policy and whether there are any conflicts of interest.

[Principle 3-1]

<Management Principles and Medium-Term Management Plan>

- The SuMi TRUST Group has established SuMi TRUST Group's management principles and medium-term management plan and posted on its website.

https://www.smth.jp/en/about_us/philosophy/index.html

<https://www.smth.jp/en/news/2017/E170519.pdf>

Furthermore, the SuMi TRUST Group has published and posted on its website the Integrated Report in July 2017, which covers in detail initiatives towards reforms of corporate governance, initiatives towards the enhancement of fiduciary duties and sustainability initiatives, in addition to the medium- to long-term management strategies of SuMi TRUST Holdings.

<https://www.smth.jp/en/ir/annual/index.html>

<Fundamental Perspectives and Basic Policy on Corporate Governance>

- The fundamental perspectives and basic policy, etc. on corporate governance are given in 1. (1) Fundamental Perspectives on Corporate Governance of this report for your reference.

<Policy and Procedure for Deciding Compensation of Directors, and Other>

The compensation of officers shall be determined by the Compensation Committee upon examination of its appropriateness, etc. Details of the policies and procedures relating to the determination of the compensation of officers, including directors and executive officers (*1), by the Compensation Committee are given in <Directors' and Executive Officers' (*1) Compensation>, and an outline of the Compensation Committee is given in <Items Related to Business Execution, Audit and Oversight, Nominations and Setting of Compensation, etc.> of this report, respectively, for your reference. (*1) Executive Officer as defined in the Companies Act (the same shall apply hereafter).

<Policies and Procedures Regarding Nomination and Dismissal of Candidates for Directors and Executive Officers, and Reasons for Appointment of Each Senior Management>

- SuMi TRUST Holdings shall decide candidates for directors and executive officers from among a wide range of diversified individuals at the Nominating Committee pursuant to the nomination policies and procedures set forth in Article 5 (Policies Regarding Nomination and Dismissal of Directors and Executive Officers) of the “Basic Policy on Corporate Governance.”

Also, SuMi TRUST Holdings shall deliberate dismissal of directors and executive officers pursuant to the dismissal policies set forth in Article 5.

For the reasons for appointment of directors and executive officers (*1), please refer to the Schedules attached to this report.

(The details concerning external directors are given in < Matters relating to external directors > of this report for your reference.)

[Supplementary Principle 4-1-1]

<Outline of Scope of Delegation to Management Team>

SuMi TRUST Holdings establishes Article 3 (Roles of the Board of Directors) of the “Basic Policy on Corporate Governance” as follows, and delegates business execution and decision-making thereon to the executive officers (*1), by resolution of the Board of Directors.

- The Board of Directors shall ensure fairness and transparency of SuMi TRUST Group’s corporate management by setting out the basic policy of managing SuMi TRUST Group and overseeing overall management of it.
- Except for matters which are required by law to be decided by the Board of Directors, the Board of Directors, in principle, delegates decisions on the execution of business to executive officers (*1), and supervises the execution of business by executive officers (*1), etc. as its central role.

[Supplementary Principle 4-1-3]

<Succession Planning for the CEO and Other Top Executives>

SuMi TRUST Holdings has clarified the quality and capabilities as well as personalities required as executive of SuMi TRUST Holdings, SuMi TRUST Bank and Sumitomo Mitsui Trust Asset Management Co., Ltd. (“SuMiTAM”) as part of its succession planning. After deliberation at the Nominating Committee, SuMi TRUST Holdings has also formulated and is operating a “Plan to Foster Human Resource as Potential Executives,” which prescribes various training programs and forums for fostering human resources as potential executives and processes for managerial promotion.

[Principle 4-6]

<Execution and Supervision of Business>

SuMi TRUST Holdings has appointed an external director as chairman of the Board, as well as two non-executive directors who are full-time Audit Committee members as deputy chairmen of the Board, to ensure the effectiveness of independent and objective supervision of management by the Board of Directors. For details, please refer to <Support System for External Directors> of this report.

[Principle 4-8]

<Policy on Efforts to Appoint at Least One-Third Independent External Directors>

SuMi TRUST Holdings sets out in Article 4 (Composition of the Board of Directors) of the “Basic Policy on Corporate Governance” that in light of the importance of external directors’ functions in the corporate governance, SuMi TRUST Holdings shall operate the Board of Directors with at least one-third of directors being

independent external directors, in principle. In accordance with Article 5 (Qualification of Directors) of the “Basic Policy on Corporate Governance,” external directors to be appointed must be selected from among a wide range of diversified individuals pursuant to the following nomination policies: a person who satisfies the Independence Standards of Independent External Officers of SuMi TRUST Holdings, and who is deemed unlikely to give rise to conflicts of interest with general shareholders of SuMi TRUST Holdings; a person who understands SuMi TRUST Holdings’ management principles, and fully understands the social responsibilities and roles of SuMi TRUST Holdings as a trust bank group; and a person who fully recognizes the role of external director, and who is able to oversee SuMi TRUST Holdings’ directors and management, and provide proper and appropriate opinions and advice, by leveraging the person’s knowledge and activities in fields such as corporate management, economy, legal affairs, accounting, tax accounting, and auditing.

<Effective Use of Independent External Directors>

In order to ensure the effectiveness of its corporate governance system and further enhance the soundness and reliability of the business model and the transparency of management of the SuMi TRUST Group, SuMi TRUST Holdings, pursuant to Article 7 (Establishment of Committees) of the “Basic Policy on Corporate Governance,” shall establish a Risk Committee and a Conflicts of Interest Committee, in which independent external directors shall participate, as advisory bodies to the Board of Directors, in addition to the Nominating Committee, the Compensation Committee and the Audit Committee, which are required to be established under the Companies Act. All of these committees shall be chaired by external directors and the majority of the members of these committees shall be external members. For details, please refer to “2. Items Related to Business Execution, Audit and Oversight, Nominations and Setting of Compensation, etc. (Overview of Corporate Governance Framework)” of this report.

[Supplementary Principle 4-8-1]

<Exchange of Information and Shared Awareness Among Independent External Directors from an Independent and Objective Standpoint>

SuMi TRUST Holdings holds External Directors’ Meetings consisting solely of external directors, in an effort to further enhance the effectiveness of corporate governance. At the meetings, exchanges of opinion are conducted based on the operations of the Board of Directors meetings, discussion themes, fulfillment status of the roles of the Board of Directors and results of the Evaluation of the Board of Directors, which contributes to the objectivity and the strengthening of the independence of the Board of Directors.

[Principle 4-9]

<Independence Standards of Independent External Directors>

SuMi TRUST Holdings has established and posted on its website the Independence Standards of Independent External Officers, and the details of these Standards are given in <Independent officers> of this report and posted on SuMi TRUST Holdings’ website.

https://www.smth.jp/en/about_us/management/governance/independence.pdf

[Supplementary Principle 4-11-1]

<Perspectives on the Balance of Knowledge, Experience, and Capability, Diversity and Scale of the Board of Directors as a Whole>

In deciding the candidates for directors, SuMi TRUST Holdings shall consider the balance between, among other things, individuals who can exert their strength in

management of particular business fields, from among wide business fields, and individuals who are suitable for management administration, in order to secure a board that is, as a whole, so balanced in terms of knowledge, experience, and capability; and so diversified that it is appropriate for supervising the wide business fields of a trust bank group adequately. Details are provided in Article 4 (Composition of the Board of Directors) and Article 5 (Qualification of Directors) of the “Basic Policy on Corporate Governance.” Accordingly, the SuMi TRUST Group as a whole makes a steady progress in achieving diversity, including the appointment of its female external director in June 2017 and so forth.

[Supplementary Principle 4-11-2]

<Situation Concerning Officer Posts that Directors Hold at Other Listed Companies>

The situation concerning officer posts that external directors hold at other listed companies is indicated in < Matters relating to external directors > of this report. The situation concerning officer posts that directors other than external directors hold at other listed companies is as follows:

- Kunitaro Kitamura: External Director, FUJIFILM Holdings Corporation

[Supplementary Principle 4-11-3]

<Outline of Results of Analysis and Evaluation Concerning the Effectiveness of the Board of Directors as a Whole>

SuMi TRUST Holdings conducts annual evaluation of the effectiveness of the Board of Directors as a whole(hereinafter, the “Evaluation of the Board of Directors”), and reviews and implements remedial measures for the challenges derived therefrom, whereby a PDCA cycle is activated for improving the effectiveness of the Board of Directors.

Following the transition of our institutional design to a “company with Three Committees”, SuMi TRUST Holdings started to include the evaluation of such committees in the Evaluation of the Board of Directors in fiscal 2017, while making efforts to enhance the evaluation items concerning the status of demonstration of supervisory functions by the Board of Directors.

Furthermore, the results of the Evaluation of the Board of Directors were deliberated by the Board of Directors, while opinions were exchanged thereon at External Directors’ Meeting attended solely by external directors.

<Evaluation Process>

In the Evaluation of the Board of Directors in fiscal 2017, SuMi TRUST Holdings conducted the evaluation of effectiveness of the Board of Directors and each committee as follows, based on the questionnaires and interviews using a third-party perspective.

Bodies to be evaluated	The Board of Directors The Nominating Committee, the Compensation Committee, the Audit Committee, the Risk Committee, the Conflicts of Interest Committee
Respondents	All directors and all members of each committee (including external committee members who are not directors)
Method of inquiry	1) Questionnaires for all directors and all members of each committee (evaluation by five-grade multiple choice, along with narrative writing) 2) Interviews with external directors by an external expert

<Summary of the Results of Evaluation of the Board of Directors for Fiscal Year 2017 and Initiatives Going Forward>

In the Evaluation of the Board of Directors for fiscal year 2017, SuMi TRUST Holdings confirmed that deliberations had become more active and that objectivity and transparency had been enhanced as a result of the Board of Directors and each committee being operated with an awareness of its objectives, and that a certain level of effectiveness had been ensured.

Meanwhile, through this Evaluation, the following three points were confirmed as issues of the Board of Directors and each committee which required improvements and enhancements, and SuMi TRUST Holdings shall continue to make efforts to address these issues.

- (1) Refinement of the operational infrastructure that contributes to efficient and enhanced deliberation by the Board of Directors
 - (2) Demonstration of further oversight functions over the important management matters in promoting the midterm management plan
 - (3) Enhancement of cooperation between the Board of Directors and each committee to enable the Board of Directors and each committee to better fulfill their functions
- SuMi TRUST Holdings shall, aiming for sustainable growth and medium- to long-term enhancement of corporate value, endeavor to further enhance the effectiveness of the Board of Directors and each committee by continuing to activate the PDCA cycle through the Evaluation of the Board of Directors.

The results of the Evaluation of the Board of Directors for fiscal year 2017 have been posted on SuMi TRUST Holdings' website.

https://www.smth.jp/en/about_us/management/governance/evaluation.pdf

[Supplementary Principle 4-12]

<Invigorate Deliberations at the Board of Directors>

The Board of Directors supervises the status of execution of duties by the executive officers (*1), etc., as well as determines the basic management policy, selects business models through the formulation of a management plan and makes decisions on risk-taking, etc. To fulfill such a role, the Board of Directors selects management priority issues and themes from a medium- to long-term perspective, in addition to matters required by laws and regulations, as the “management theme,” and discusses them freely without the express purpose of reaching conclusions.

Through these initiatives, the Board of Directors utilizes the insights and perspectives of the external directors on important themes at the heart of management.

[Supplementary Principle 4-14-2]

<Policies on Training of Directors>

SuMi TRUST Holdings sets out its policies regarding the training of directors as follows in Article 6 (Policies Regarding Training of Directors) of the “Basic Policy on Corporate Governance”:

- SuMi TRUST Holdings shall collect and provide information regarding economic conditions, industry movement, compliance with laws, corporate governance, finance & accounting, and any other matters, which is required by directors in order to perform their roles and functions, and it shall thereby support directors' execution of duties.
- In a timely manner after assuming office, external directors of SuMi TRUST Holdings shall receive explanations from governing sections or responsible officers, etc., and acquire a sufficient understanding regarding such matters as SuMi TRUST Group's management strategy, management plan, status of various business, management environment, and management issues, in order to perform their roles and functions. In addition, the “Policy on Training of Directors and Other Officers” was established in February 2016. SuMi TRUST

Holdings will clarify systematically the training and orientation sessions as well as other training programs SuMi TRUST Holdings had hitherto offered, and report to the Board of Directors on the status of implementation for training programs. Implementation status for the fiscal year 2017 is as follows.

1. Providing opportunities to external officers to acquire knowledge on business, etc.
 - Conducting business briefings for mainly newly-appointed external officers: Each of the managerial departments and the planning departments of main businesses conduct briefings each year for newly-appointed external officers on the details of business and issues, among other matters. A total 22 sessions were held over eight days, with each session lasting about an hour to two hours and covering such themes as management and business in general, as well as themes that are of much interest to external directors and external auditors or themes that are specialized and unfamiliar to them such as international finance regulations, risk appetite/framework, system development process, internal rating systems and provisions/write-offs, IR strategies and advertising strategies, in an effort to increase the quality of the business briefings. Advance briefing on matters to be deliberated by the Board of Directors at the External Officers Liaison Meetings
 - Attendance at the General Managers Meeting held at the beginning of the fiscal year
 - Joining in at the “Officers Hearings,” “General Managers Hearings,” “Hearings with General Managers of overseas offices of SuMi TRUST Bank” and “Hearings with the Presidents of other Group companies” which are held as interviews with the corporate auditors and Audit Committee members
 - Visits to the major office buildings of the SuMi TRUST Group, onsite surveys of the major branches of SuMi TRUST Bank and hearings at the branches
 - Onsite surveys of the major branches of SuMi TRUST Bank and experience of operations of terminals connected to hosting servers, etc.
2. Various training and seminars for mainly internal officers
 - Training programs for understanding finance-related laws/regulations and market trends: Aimed to deepen the understanding of topics of various laws/regulations relating to the finance industry, and the external environment including the market environment that could impact management
 - Training programs for reinforcing management capabilities through an understanding of the management issues of the SuMi TRUST Group: Aimed to deepen the understanding of the management issues facing the SuMi TRUST Group and the direction of its business strategies, while at the same time reinforcing management capabilities by discussing various recommendations towards the resolution of such issues
 - Compliance training programs: Conducting High-level US Compliance training programs and compliance training programs for officers
 - Corporate governance training programs: Training is conducted in the form of seminars by introducing and explaining mainly examples of questions addressed to external officers at recent general shareholders’ meetings and examples of corporate scandals. In addition, materials that would be useful to the officers of SuMi TRUST Holdings are selected and utilized including materials from seminars and workshops conducted by the Stock Transfer Agency Business Advisory Department for its customers, materials distributed to customers, and research papers contributed to professional journals, etc.
 - Human rights training programs: Trainings on the adequate operation of SNS

[Principle 5-1]

<Policy Regarding Structural Development and Efforts to Promote Constructive Dialogue with Shareholders>

SuMi TRUST Holdings has established the Policy for Constructive Dialogue with Shareholders, etc. as provided in Article 17 (Policy for Constructive Dialogue with Shareholders, etc.) of the “Basic Policy on Corporate Governance” and the “Annual Report-Financial Data Section” which is a supplementary volume of the Integrated Report:

- SuMi TRUST Holdings shall emphasize constructive dialogue with its shareholders, etc., and shall endeavor to engage in dialogue with its shareholders, etc. through various opportunities under the initiative of its senior management.
- Through constructive dialogue, SuMi TRUST Holdings shall endeavor to obtain the understanding of its shareholders, etc. regarding SuMi TRUST Holdings’ management policies, and it shall endeavor to support sustainable growth and medium- to long-term enhancement of the corporate value of the SuMi TRUST Group, by absorbing and reflecting analyses of management administration and views from the perspective of capital providers, etc. through listening to the voice of the shareholders, etc.

To promote constructive dialogue with shareholders, SuMi TRUST Holdings actively conducts IR activities. For details, including the structural development for the promotion of dialogue as well as other efforts and measures, please refer to <Activities Regarding IR> of this report.

2. Capital Structure

Percentage of shares held by overseas investors	30% or more
---	-------------

<Principal shareholders> (Updated)

Name	Number of Shares Held	Percentage (%)
The Master Trust Bank of Japan, Ltd. (trust account)	20,302,600	5.36
Japan Trustee Services Bank, Ltd. (trust account)	19,929,600	5.26
Japan Trustee Services Bank, Ltd. (trust account 9)	10,728,400	2.83
The Bank of New York 133524	9,405,419	2.48
JP Morgan Chase Bank 385151	7,594,423	2.00
Japan Trustee Services Bank, Ltd. (trust account 5)	7,558,700	1.99
Japan Trustee Services Bank, Ltd. (trust account 1)	5,517,400	1.45
Japan Trustee Services Bank, Ltd. (trust account 2)	5,448,300	1.43
State Street Bank West Client-Treaty 505234	5,306,959	1.40
Japan Trustee Services Bank, Ltd. (trust account 7)	5,303,700	1.40

Controlling shareholders (except parent company)	None
Parent company	None
Supplementary Remarks (Updated)	

- Principal shareholders indicated are as of September 30, 2018.
- For Percentage (%), the numbers are rounded down to two decimal places.
- BlackRock Japan Co., Ltd. (BlackRock Japan) filed a Report of Large Volume Holding as of October 21, 2014 and reported that BlackRock Japan and nine others held common shares of SuMi TRUST Holdings as of October 15, 2014 as provided below. SuMi TRUST Holdings, however, has not been able to confirm the actual holding of shares as of September 30, 2018, they are not included in the status of principal shareholders above.
SuMi TRUST Holdings consolidated its shares with a ratio of ten shares of common stock into one share on October 1, 2016. Please note that the number of shares held as shown below does not take into account the consolidation of shares
Name of holder of large-volume shares: BlackRock Japan, Co., Ltd. and nine joint holders
Number of shares held: 197,950,253 (including the number of shares held by joint holders)
Percentage of shares held to total shares issued (%) 5.07%
- A Change Report of Large Volume Holding filed by Baillie Gifford & Co. available for public inspection as of May 22, 2018, reported that Baillie Gifford & Co. and one other shareholder held common shares of SuMi TRUST Holdings as of May 15, 2018, as provided below. SuMi TRUST Holdings, however, has not been able to confirm the actual holding of shares as of September 30, 2018 and they are not included in the status of principal shareholders above.
Name of holder of large-volume shares: Baillie Gifford & Co and one joint holder
Number of shares held: 26,365,979(including the number of shares held by the joint holder)
Percentage of shares held to total shares issued (%): 6.75%

3. Corporate Profile

Stock exchange listings	Tokyo Stock Exchange (first section), Nagoya Stock Exchange (first section)
Fiscal year end	March 31
Industry	Banking
(Consolidated) number of employees at last fiscal year end	1,000 or more
(Consolidated) net sales in the last fiscal year	1 trillion yen or more
Number of consolidated subsidiaries at last fiscal year end	More than or equal to 50 and fewer than 100

4. Policies relating to measures for protecting minority shareholders when conducting transactions, etc. with controlling shareholders

None.

5. Other Special Items that could have a Significant Impact on Corporate Governance

None.

II. Organizational Structure for Managerial Decision-Making, Execution, Supervision and other Corporate Governance System

1. Organizational Structure and Operational Management

Type of Organization	Company with Three Committees
----------------------	-------------------------------

【Directors】

Number of directors stipulated in Articles of Incorporation: (Updated)	20
Directors' term of office stipulated in Articles of Incorporation:	1 year
Chairperson of the Board of Directors: (Updated)	External Director
Number of directors: (Updated)	15

【Matters relating to external directors】

Number of external directors: (Updated)	7
Number of external directors designated as independent officer: (Updated)	7

Relationship with SuMi TRUST Holdings (1) (Updated)

Name	Attribute	Relationship with SuMi TRUST Holdings*										
		a	B	C	d	e	f	g	h	i	j	k
Soichi Shinohara	Scholar											
Takeshi Suzuki	From another company											
Mikio Araki	From another company											
Isao Matsushita	From another company											
Shinichi Saito	From another company											
Takashi Yoshida	Certified public accountant											
Hiroko Kawamoto	From another company											

* Categories for relationship with SuMi TRUST Holdings

* “○” when the said individual presently falls or has recently fallen under each of the following categories; “△” when the said individual fell under each of the following categories in the past.

* “●” when a close relative of the said individual presently falls or has recently fallen under each of the following categories; “▲” when a close relative of the said individual fell under each of the following categories in the past.

a. Person performing an executive role of a listed company or its subsidiary

b. Person performing an executive role or acting as a non-executive director of the parent company of a listed company

c. Person performing an executive role of a fellow subsidiary company of a listed company

d. Person whose principal client or supplier is a listed company or person performing an executive role thereof

e. Principal client or supplier of a listed company or person performing an executive role thereof

f. Consultant, accountant or legal professional who receives a large amount of monetary consideration or other property from a listed company besides compensation as an officer

- g. Major shareholder of a listed company (person performing an executive role of the said corporate shareholder if the major shareholder is a legal entity)
- h. Person performing an executive role of a client or supplier company of a listed company (which does not correspond to any of d, e, or f above) (the said individual only)
- i. Person performing an executive role of a company, between which and SuMi TRUST Holdings external officers are mutually appointed (the said individual only)
- j. Person performing an executive role of a company or organization that receives a donation from a listed company (the said individual only)
- k. Other

Relationship with SuMi TRUST Holdings (2) (Updated)

Name	Committees-based			Independent officer	Supplemental information on corresponding items	Reason for selecting as external director (and reason for appointing as independent officer)
	Nominating Committee	Compensation Committee	Audit Committee			
Soichi Shinohara	○	○		○	<Major concurrent post> President of Kyoto Gakuen University	Being an economist specializing in international economics and macroeconomics, Mr. Soichi Shinohara has extensive knowledge and deep insight in relation to domestic and foreign economics. He has provided comments and advice based on such experience during his term of office as an external director of SuMi TRUST Holdings. SuMi TRUST Holdings has selected him as an external director, in order to continue to make full use of his knowledge and insight in its management, although he has never been directly involved in the management of companies in the past. Further, he currently serves as the President of Kyoto Gakuen University, with which SuMi TRUST Holdings and the SuMi TRUST Group have not entered into any transactions and thus such fact would not affect his independence.
Takeshi Suzuki	○	○		○	<Major concurrent post> External Director of AICHI CORPORATION	Mr. Takeshi Suzuki has extensive experience and knowledge in the field of accounting, finance, affiliated company management, etc. as the former Senior Managing Director of Toyota Motor Corporation, which is a leading global company in Japan. After retiring from the office of the Senior Managing Director of Toyota Motor Corporation, he has been involved in the management

					<p>of companies operating finance related businesses; he has served as the Representative Director and President of Toyota Financial Services Corporation and the Representative Director and Chairman of Aioi Nissay Dowa Insurance Co., Ltd. He has provided comments and advice based on such experience, mainly at board meetings, during his term of office as an external director of SuMi TRUST Holdings. In order to continue to make full use of his knowledge and insight, SuMi TRUST Holdings has selected him as an external director. Further, although he served as the Representative Director and Chairman of Aioi Nissay Dowa Insurance Co., Ltd. until June 2015, with which SuMi TRUST Holdings and the SuMi TRUST Group have conducted transactions, the average annual amount of such transactions in the immediately preceding three fiscal years has been less than one percent of each of the consolidated sales of Aioi Nissay Dowa Insurance Co., Ltd. and the consolidated gross profits of SuMi TRUST Holdings and thus such fact would not affect his independence.</p>
Mikio Araki	○	○		○	<p><Major concurrent posts> Chairman of the Board of Japan Economic Research Institute Inc., External Director of Kintetsu Group Holdings Co., Ltd., External Auditor of Japan Freight Railway Company</p> <p>Mr. Mikio Araki has extensive experience in bank management and policy-based finance, etc. as the former Representative Director and Vice President of Development Bank of Japan Inc., and has extensive knowledge on domestic and foreign financial and economic circumstances as Chairman of the Board of Japan Economic Research Institute Inc.. He has provided comments and advice based on such experience, mainly at board meetings, during his term of office as an external director of SuMi TRUST Holdings. In order to continue to make full use of his knowledge and insight, SuMi TRUST Holdings has selected him as an external director. Further, although he currently serves as the Chairman of the Board of Japan Economic Research Institute Inc, with which SuMi TRUST Holdings and the SuMi TRUST Group have conducted transactions, the average annual amount of such transactions in the immediately preceding three fiscal years has been less than one percent of</p>

						each of the sales of the Institute and the consolidated gross profits of SuMi TRUST Holdings and thus such fact would not affect his independence.
Isao Matsushita	○	○		○	<Major concurrent posts> Senior Executive Advisor of JXTG Holdings, Inc., Outside Director of INPEX CORPORATION, Outside Director of Matsumotokiyoshi Holdings Co., Ltd.	Mr. Isao Matsushita has extensive experience in the general management of companies, as the former Representative Director and President of JX Holdings, Inc. (currently JXTG Holdings, Inc.), which is a representative integrated energy, resources and material enterprise group in Japan. He has served as an external director of SuMi TRUST Holdings since June 2017. During his term of office, he has contributed to further enhancing the effectiveness of the Board of Directors as the Chairperson of the Board as well as provided comments and advice based on such years of experience. In order to make full use of his knowledge and insight regarding business management and company management, SuMi TRUST Holdings has selected him as an external director. Further, although he currently serves as a Senior Advisor of JXTG Holdings, Inc., with which SuMi TRUST Holdings and the SuMi TRUST Group have conducted transactions, the average annual amount of such transactions in the immediately preceding three fiscal years has been less than one percent of each of the consolidated sales of JXTG Holdings, Inc. and the consolidated gross profits of SuMi TRUST Holdings and thus such fact would not affect his independence.
Shinichi Saito	○		○	○	<Major concurrent posts> Representative Director, Chairman & Representative Director of Japan Industrial Solutions, Co., Ltd., External Director of Meikoshokai Co., Ltd.	Mr. Shinichi Saito has extensive knowledge and experience in financial accounting as the former Finance Director of Marubeni Corporation. In addition to engaging in management at an investment company, he also has deep insight as a company executive. During his term of office as an external auditor of SuMi TRUST Holdings for four years from June 2013, and thereafter as an external director of SuMi TRUST Holdings since June 2017, he has provided comments and advice based on such years of experience. SuMi TRUST Holdings has selected him as an external director, in order to

						<p>continue to make full use of his knowledge and insight in its management.</p> <p>Further, he currently serves as Chairman & Representative Director of Japan Industrial Solutions, Ltd., with which SuMi Trust Holdings and the SuMi TRUST Group have not entered into any transactions and thus such fact would not affect his independence.</p>
Takashi Yoshida			○	○	<p><Major concurrent posts> Certified Public Accountant, External Corporate Auditor of Nippon Seiro Co., Ltd., External Director of Cosmos Initia Co., Ltd.</p>	<p>Mr. Takashi Yoshida had been a member of a major audit firm for many years and has extensive knowledge and experience in financial accounting as a certified public accountant in charge of auditing financial institutions and operating companies. In addition to experience as a certified public accountant, he had been engaged in management as the Representative Partner or Managing Director of an audit firm and also has global knowledge based on overseas work experience. During his term of office as an external auditor of SuMi TRUST Holdings for one year from June 2016, and thereafter as an external director of SuMi TRUST Holdings since June 2017, he has provided comments and advice based on such years of experience. SuMi TRUST Holdings has selected him as an external director, in order to continue to make full use of his knowledge and insight in its management. Although he has never been directly involved in the management of a company in the past, for the reasons stated above, SuMi TRUST Holdings is convinced that he is capable of properly performing his duties as an external director. In his capacity as a certified public accountant, he has established Yoshida Certified Public Accounting Office, with which SuMi TRUST Holdings and the SuMi TRUST Group have not entered into any advisory contract or have not engaged in any transactions and thus such fact would not affect his independence.</p>
Hiroko Kawamoto			○	○	<p><Major concurrent posts> Executive Vice President and COO of ANA Strategic Research Institute Co., Ltd., Outside Director of Renaissance Inc.</p>	<p>as a Director and Executive Officer of All Nippon Airways Co., Ltd. from April 2013 and, thereafter as a Director and Senior Executive Officer of All Nippon Airways Co., Ltd. since</p>

					<p>April 2016, and she has been responsible for the overall management of the company and promotion of women's activities. In addition, for one year from June 2016, she has served as an external director of SuMi TRUST Bank, and as an external director of SuMi TRUST Holdings since June 2017, and she has provided comments and advice based on such years of experience during her term of office. SuMi TRUST Holdings has selected her as an external director, in order to continue to make full use of her knowledge and insight in its management.</p> <p>Further, although she served as a Director and Senior Executive Officer of All Nippon Airways Co., Ltd. until March 2017, and currently serves as the Representative Director and Vice President of ANA Strategic Research Institute Co., Ltd., with both of which SuMi TRUST Holdings and the SuMi TRUST Group have conducted transactions, the average annual amount of such transactions in the immediately three preceding fiscal years has been less than one percent of each of the respective consolidated sales of the above-mentioned companies and the consolidated gross profits of SuMi TRUST Holdings and thus such fact would not affect her independence.</p>
--	--	--	--	--	---

【Committees】

Composition and attributes of the chairperson of committees (Updated)

	Nominating Committee	Compensation Committee	Audit Committee
Committee members	7	6	5
Full-time members	2	2	2
Internal directors	2	2	2
External directors	5	4	3
Chairperson	External director	External director	External director

【Executive officers (*1)】

Number of executive officers (*1) (Updated)	14
---	----

Status of concurrent post (Updated)

--

Name	Representation Right	Double as director			Double as employee
			Nominating Committee	Compensation Committee	
Tetsuo Ohkubo	○	○	○	○	×
Jiro Araumi	○	○	×	×	×
Toru Takakura	○	○	×	×	×
Akihiko Shirayama	×	×	×	×	×
Yoshiaki Koshimura	×	×	×	×	×
Tadashi Nishimura	×	×	×	×	×
Yutaka Nishida	×	×	×	×	×
Yasumi Nose	×	×	×	×	×
Atsushi Kaibara	×	×	×	×	×
Akira Yokota	×	×	×	×	×
Shigeki Tanaka	×	×	×	×	×
Hitoshi Sato	×	×	×	×	×
Masaru Hashimoto	×	○	○	○	×
Kiyomitsu Asahi	×	×	×	×	×

【Audit】

Directors and employees to assist duties of Audit Committee (Updated)	Yes
---	-----

Matters relating to the independence of directors and employees from executive officers (*1)

The Audit Committee Office has been established to assist the Audit Committee's duties, and staff of the Audit Committee Office work to assist Audit Committee members with their duties under the directions and orders of Audit Committee members.

The executive officers (*1) give consideration so that staff of the Audit Committee Office are not subject to unjust restrictions in conducting work to assist the Audit Committee's duties, as well as discussing in advance the personnel affairs and employment terms of staff of the Audit Committee Office with the Audit Committee.

Status of relationship between the Audit Committee, accounting auditors and the Internal Audit Department

The basic policy on internal auditing and internal audit plans is determined by the Board of Directors after the Internal Audit Department conducts prior consultation with and obtains approval of the Audit Committee. Results, etc. of the internal audits are reported to the Audit Committee and the President without delay, as well as to the Board of Directors in a timely and appropriate manner.

The Audit Committee and the Internal Audit Department exchange opinions and share information periodically. The Audit Committee also periodically receives reporting from and exchanges opinions and information with the accounting auditors on auditing information, auditing plans, the status of accounting auditing performed and auditing results, among others, and also exchange opinions and share information from time to time as needed. In this way, they monitor and verify whether the accounting auditors have maintained an independent standpoint and

performed audits appropriately. Further, the Internal Audit Department exchanges opinions and shares information with the accounting auditors periodically as part of accounting audits and the audits on internal control over financial reporting. In addition to the above efforts, the Audit Committee, the Internal Audit Department and the accounting auditors aim to reinforce cooperation between the three parties such as by holding periodic meetings to ensure effective auditing.

【Independent officers】

Number of independent officers (Updated)	7
--	---

Matters relating to independent officers

Having established the Independence Standards of Independent Officers, SuMi TRUST Holdings has designated all the external directors who satisfy these standards and with whom no conflict of interest is likely to arise with general shareholders.

The specific contents of the Independence Standards of Independent Officers of SuMi TRUST Holdings are as follows:

“Independence Standards of Independent Officers”

1. If none of the following items applies to a candidate, the candidate shall be determined to have sufficient independence against SuMi TRUST Holdings.
 - (1) A person who is or was a person performing an executive role (an executive director, an executive officer (*1) (*2) or an employee including a manager) in SuMi TRUST Holdings or its affiliated companies.
(*2) Executive Officer as defined in our internal policy (the same shall apply hereafter).
 - (2) A person to whom SuMi TRUST Holdings or SuMi TRUST Bank, which is a core subsidiary of SuMi TRUST Holdings, is a principal business counterparty. If such person is a corporation such as a company, a person who is or, within the past three years, has been performing an executive role (an executive director, an executive officer, a managing director, or an employee including a manager) in such corporation, its parent company or its material subsidiaries.
 - (3) A person who is a principal business counterparty of SuMi TRUST Holdings or SuMi TRUST Bank. If such person is a corporation such as a company, a person who is or, within the past three years, has been performing an executive role (an executive director, an executive officer, a managing director, or an employee including a manager) in such corporation, its parent company or its material subsidiaries.
 - (4) A person who presently is a major shareholder of SuMi TRUST Holdings (holding 10% or more of the voting rights). If such person is a corporation such as a company, a person who is or, within the past three years, has been performing an executive role (an executive director, an executive officer, a managing director, or an employee including a manager) in such corporation, its parent company or its material subsidiaries.
 - (5) A major creditor, etc. who, in fund-raising, is indispensable to SuMi TRUST Holdings or SuMi TRUST Bank and is depended on by SuMi TRUST Holdings or SuMi TRUST Bank to such an extent that the creditor cannot be substituted. If such person is a corporation such as a company, a person who is or, within the past three years, has been performing an executive role (an executive director, an executive officer, a managing director, or an employee including a manager) in such corporation, its parent company or its material subsidiaries.
 - (6) A debtor, etc. who, in fund-raising, depends on SuMi TRUST Bank to such an extent that SuMi TRUST Bank cannot be substituted. If such person is a

corporation such as a company, a person who is or, within the past three years, has been performing an executive role (an executive director, an executive officer, a managing director, or an employee including a manager) in such corporation, its parent company or its material subsidiaries.

- (7) A person who presently is an accounting auditor of SuMi TRUST Holdings or SuMi TRUST Bank, or a partner, etc., of such accounting auditor, or a person who has been in charge of the accounting audit of SuMi TRUST Holdings or SuMi TRUST Bank as such partner, etc., within the past three fiscal years.
- (8) A person who is or, within the past three years, has been performing an executive role (an executive director, an executive officer, a managing director, or an employee including a manager) in the lead managing underwriter of SuMi TRUST Holdings.
- (9) An individual such as a lawyer, certified public accountant, tax accountant, or other consultant who has received a large amount of money from SuMi TRUST Holdings or SuMi TRUST Bank within the past three years.
- (10) A person who is or who has been, within the past three years, performing an executive role (an executive director, an executive officer, a managing director, or an employee such as a manager) in a law firm, audit corporation, tax accountancy corporation, consulting firm, or other corporation to whom SuMi TRUST Holdings or SuMi TRUST Bank is a principal business counterparty.
- (11) A person who receives a large amount of donation money from SuMi TRUST Holdings or SuMi TRUST Bank. If such person is a corporation such as a company, a person who is or, within the past three years, has been performing an executive role (an executive director, an executive officer, a managing director, or an employee including a manager) in such corporation, its parent company or its material subsidiaries.
- (12) A person who is a director, corporate auditor or executive officer, a managing director, of a company to which directors are transferred from SuMi TRUST Holdings or its affiliated companies, or a person who is a director, corporate auditor or executive officer of such company's parent company or material subsidiaries.
- (13) A person who is a close relative (a spouse, a relative within the third degree of kinship, or a cohabiting relative) of any of the persons listed in items (1), (2), (3), (9), and (10) above.

2. Even if any of the above items applies to such person, SuMi TRUST Holdings may appoint as a candidate for its independent officer a person who it believes to be suitable for the position of SuMi TRUST Holdings' independent officer considering such person's character and insight, etc., provided that, it publically provides an explanation as to why it believes such person satisfies the requirements for, and qualifies as, its independent officer.

3. If SuMi TRUST Holdings' business counterparty (including a law firm, audit corporation, tax accountancy corporation, consulting firm, etc.) or the donation money, etc. (including payment to individuals such as a lawyer, certified public accountant, tax accountant, or other consultant) satisfies the following criteria for the relevant facts to be regarded as minor, SuMi TRUST Holdings shall deem that it does not fall under a "principal business counterparty" or "large amount of donation money" and omit information concerning attributes, etc., by determining that the relevant independent officer can be recognized to be sufficiently independent (including a candidate thereof).

<Business counterparty>

- The amount of payment to the relevant business counterparty (the business

counterparty, and its parent company and material subsidiaries) by SuMi TRUST Holdings and SuMi TRUST Bank is less than 2% of the consolidated average annual total sales of the business counterparty for the past three fiscal years.

- The gross profits of SuMi TRUST Holdings and its subsidiaries earned with respect to the counterparty (the business counterparty, and its parent company and material subsidiaries) is less than 2% of the consolidated gross profits of SuMi TRUST Holdings.

<Donation money, etc>

- If the recipient is an individual: the money received from SuMi TRUST Holdings and its subsidiaries is less than ¥10 million per year on average over the past three years.
- If the recipient is a corporation: the money received from SuMi TRUST Holdings and its subsidiaries is less than the greater amount of either ¥10 million per year, or 30% of the annual total expenses of the relevant corporation on average over the past three years.

【Incentives】

Incentives Policies for Directors and Executive Officers (*1)	Introduce stock option plan and other systems
---	---

Supplementary Remarks on This Item (Updated)

SuMi TRUST Holdings has introduced a stock-compensation-type stock option plan for the directors (excluding directors who are Audit Committee members and external directors) and executive officers (*1) (*2) of SuMi TRUST Holdings and the directors (excluding external directors) and executive officers (*2) of its subsidiary SuMi TRUST Bank, in order to further heighten their enthusiasm and morale to improve SuMi TRUST Holdings' medium- to long-term consolidated performance and share price, and to increase the return to shareholders.

Further, SuMi TRUST Holdings encourages them to contribute part of their compensation to the share ownership plan of officers in order to, among other things, further increase their enthusiasm to improve SuMi TRUST Holdings' share price and business performance.

Person Eligible to Receive Stock Options	Internal Directors and Executive Officers (*1) of SuMi TRUST Holdings, directors of its subsidiaries, and others
--	--

Supplementary Remarks on This Item (Updated)

Allottees of share acquisition rights shall be directors (excluding directors who are Audit Committee members and external directors) and executive officers (*1) (*2) of SuMi TRUST Holdings and the directors (excluding external directors) and executive officers (*2) of its subsidiary SuMi TRUST Bank.

For the eighth stock option in 2018, 690 stock acquisition rights were granted to a total of 70 allottees.

【Compensation of Directors and Executive Officers (*1)】

Disclosure of Compensation of Individual Directors	This compensation to individual directors is not disclosed.
--	---

Disclosure of Compensation of Individual Executive Officers (*1)	This compensation to individual executive officers (*1) is not disclosed.
--	---

Supplementary Remarks on This Item (Updated)
--

In fiscal year 2017, compensation amounts were as follows.

- Total compensation amounts of 132 million yen (including annual compensation of 120 million yen, stock option compensation of 4 million and bonuses of 6 million yen) were paid to seven directors excluding external directors.
- Total compensation amounts of 14 million yen (including annual compensation of 14 million yen) were paid to two corporate auditors excluding external corporate auditors.
- Total compensation amounts of 264 million yen (including annual compensation of 188 million yen, stock option compensation of 28 million yen and bonuses of 47 million yen) were paid to 13 executive officers (*1).
- Total compensation amounts of 94 million yen (including annual compensation of 94 million yen) were paid to seven external directors
- Total compensation amounts of 7 million yen (including annual compensation of 7 million yen) were paid to three external corporate auditors.

* SuMi TRUST Holdings transitioned from a company with a Board of Corporate Auditors to a company with Three Committees, based on the resolution at the 6th ordinary general meeting of shareholders held on June 29, 2017. Accordingly, the number of persons paid and the amounts of compensation for corporate auditors and external corporate auditors are the number of corporate auditors and external corporate auditors in office from April 1, 2017 to June 29, 2017 and the consideration for their execution of duties during the same period, respectively.

* Compensation, etc. paid to executive officers (*1) concurrently serving as directors is included in the amounts for executive officers (*1).

Decision-Making Policies Relating to Compensation Amounts and Calculation Methods (Updated)

Yes

Disclosure of Decision-Making Policies Relating to Compensation Amounts and Calculation Methods

(1) Decision-making policies, etc. relating to the compensation amounts for Directors and Executive Officers (*1) (*2), and its calculation methods
SuMi TRUST Holdings has set forth a policy on decisions on the content of compensation for individual directors and executive officers (*1) (*2) of SuMi TRUST Holdings in the Compensation Committee. The detail is as follows.

(i) Compensation, etc. for the directors (excluding external directors and internal directors who are Audit Committee members) and executive officers (*1) (*2) (the “officers”) of SuMi TRUST Holdings aims to function effectively as an incentive for improvement of corporate performance and expansion of corporate value in order to realize stable and sustainable growth of the SuMi TRUST Group, including SuMi TRUST Bank, a core subsidiary.

(ii) Not focusing on single-year performance evaluation in which short-term contribution to profit is emphasized, but focusing on officers’ qualifications and capabilities as senior management, and based on a comprehensive evaluation that reflects assessment of medium- to long-term performance, the compensation structure shall be established as a combination of both short-term and medium- to long-term incentives.

(iii) In order to effectively provide a supervising system over each Group company, SuMi TRUST Holdings, as a holding company, determines the compensation of

individual officers based on highly transparent, fair and objective assessments upon accurately monitoring the role to be played by each officer in the management of the Group as well as their accomplishments.

(iv) The Compensation Committee intends to deepen the cooperation with the Nominating Committee, the Audit Committee and voluntary committees such as the Risk Committee and the Conflicts of Interest Committee in sharing information, and conduct deliberations with the aim to establish systems and structures for compensation of greater accountability and to make fair and well-balanced compensation management.

(2) Outline of compensation structure

(i) Basic compensation structure

(a) In principle, payment shall be made as a combination of monthly compensation, officers' bonus, and stock-compensation-type stock options.

(b) The monthly compensation is separated into two types: "fixed compensation" that is a fixed amount per position, and "individual performance-based compensation" that is based on each individual officer's evaluation of the preceding fiscal year while also reflecting the officer's medium- to long-term performance contribution.

(c) "Individual performance-based compensation," which is determined on the basis of individual evaluations, has been designed so that it accounts for a sizable enough portion of the monthly compensation to act as an incentive.

(d) Officers' bonus is separated into two types: "company performance-based bonus" that reflects objective indicators such as consolidated net income, and "individual performance-based bonus" that reflects the individual officer's performance of the preceding fiscal year. The officers' bonus has been designed so that it accounts for a sizable enough portion of total compensation to act as an incentive.

(e) With regard to the stock-compensation-type stock options, the number of stock option rights shall be determined based on the number of stock option rights per position with an adjustment for each individual officer's performance evaluation and the like. Stock-compensation-type stock options have been designed to account for a sizable enough portion of total compensation to act as an incentive.

(Reference)

The composition ratio and the range of fluctuation of the standard compensation table for the President have been set as follows, and a system is in place in which the Compensation Committee determines the individual compensation amounts based on this table.

- The ratio of "fixed compensation" to "individual performance compensation + executive bonus," which is linked to individual and corporate performance, shall be approximately 50:50.
- "Individual performance compensation" shall be in a range of 70% to 160% of the standard amount.
- "Officer bonuses" shall be determined each time reflecting corporate performance including consolidated net business profit before credit costs and consolidated net profit.
- The number of stock-compensation-type stock options to be granted shall be determined each time reflecting the fiscal year's performance.

The composition ratio of the standard compensation table of officers responsible for the execution of businesses of SuMi TRUST Holdings is as follows.

<Composition ratio>

- Proportion of fixed compensation to monthly compensation : approximately 50% to 54%
- Proportion of individual performance compensation + executive bonus to monthly compensation: approximately 46% to 50%

Total: 100%

The system shall be operated and applied as follows.

- A range of fluctuation similar to that of the above compensation system of the President shall be set for each rank.
- Officers who serve concurrently at SuMi TRUST Bank or SuMiTAM shall receive compensation that has been divided according to a given ratio that reflects the proportion of concurrent service.

(ii) Compensation, etc. to internal directors who are Audit Committee members

The compensation to internal directors who are Audit Committee members is composed of fixed monthly compensation alone, and the suitable level for internal directors who are Audit Committee members is determined taking into consideration the business conditions of SuMi TRUST Holdings, compensation levels of directors, general standards and the like.

(iii) Compensation, etc. to external directors

Compensation to external directors is composed of fixed monthly compensation alone, and amounts shall be added if the external directors serve as the Chairperson of the Board of Directors or a member of statutory committees. The level of compensation is determined taking into consideration the business conditions of SuMi TRUST Holdings, compensation levels of internal directors, general standards and the like.

In the directors and executive officers (*1) (*2) stock ownership plan, a system is introduced in which the target number of shares held is prescribed for each rank, and individual directors and executive officers (*1) (*2) voluntarily determine the fund amount with reference to such target number of shares held.

(3) Process for the determination of the amount of officer compensation

(i) Matters decided by the Compensation Committee are as follows.

- Policy on decisions on the details of compensation, etc. for individual directors and executive officers (*1)
- Amounts of compensation, etc. for individual directors and executive officers (*1)

(ii) Matters deliberated by the Compensation Committee are as follows.

- Policy on decisions on the details of compensation, etc. for individual directors and executive officers (*2) etc., of SuMi TRUST Bank and SuMiTAM.

(iii) Matters reported to the Compensation Committee are as follows.

- Amounts of compensation, etc. for individual executive officers (*2) of SuMi TRUST Holdings
- Amounts of compensation, etc. for individual directors and executive officers (*2) etc. of SuMi TRUST Bank and SuMiTAM.

<Support System for External Directors>

In order to ensure the effective and smooth operation of the Board of Directors and the Nomination, Compensation and Audit Committees, SuMi TRUST Holdings has established the Corporate Secretariat and the Audit Committee Office as dedicated organizations and strengthened the supporting systems to fulfill the functions of the external directors and external auditors.

In order to support the external director in fulfilling his duties as chairman of the Board of Directors, SuMi TRUST Holdings has appointed two non-executive directors who are full-time Audit Committee members as deputy chairmen of the

Board of Directors, in addition to the Corporate Secretariat, to provide various information mainly on matters scheduled to be deliberated by the Board of Directors, and to give support such as in summarizing issues from management and supervisory perspectives.

<Status of persons retired from Representative Director and President, etc.>
Names, etc. of advisors, etc. who have formerly served as Representative Director and President, etc.

Name	Title/Position	Activity Description	Working Arrangement/Conditions (Full-time/Part-time, With/Without Compensation, etc.)	Date of Retirement as President, etc.	Term
Osamu Sakurai	Honorary Advisor, SuMi TRUST Bank	Interactions with various external organizations, etc.	Part-time, without compensation	June 29, 1993	1 year
Ken Fujii	Honorary Advisor, SuMi TRUST Bank	Interactions with various external organizations, etc.	Part-time, without compensation	March 31, 1999	1 year
Hiroshi Hayasaki	Honorary Advisor, SuMi TRUST Bank	Interactions with various external organizations, etc.	Part-time, without compensation	March 1, 1998	1 year
Atsushi Niira	Honorary Advisor, SuMi TRUST Bank	Interactions with various external organizations, etc.	Part-time, without compensation	March 1, 1998	1 year
Keiu Nishida	Honorary Advisor, SuMi TRUST Bank	Interactions with various external organizations, etc.	Part-time, without compensation	March 31, 2000	1 year
Hisao Muramoto	Honorary Advisor, SuMi TRUST Bank	Interactions with various external organizations, etc.	Part-time, without compensation	June 27, 2003	1 year
Kiichiro Furusawa	Honorary Advisor, SuMi TRUST Bank	Interactions with various external organizations, etc.	Part-time, without compensation	June 27, 2010	1 year
Hitoshi Murakami	Honorary Advisor, SuMi TRUST	Interactions with various external organizations	Part-time, without compensation	June 29, 2005	1 year

	Bank	s, etc.			
Atsushi Takahashi	Honorary Advisor, SuMi TRUST Bank	Interactions with various external organizations, etc.	Part-time, without compensation	March 31, 2011	1 year
Kazuo Tanabe	Honorary Advisor, SuMi TRUST Bank	Interactions with various external organizations, etc.	Part-time, without compensation	March 31, 2012	1 year
Jun Okuno	Honorary Advisor, SuMi TRUST Bank	Interactions with various external organizations, etc.	Part-time, without compensation	March 31, 2012	1 year

Total number of advisors, etc. who have formerly served as Representative Director and President, etc. 11 persons

Other Matters

1. SuMi TRUST Holdings does not have an advisory/advisor system.

2. SuMi TRUST Bank, the core subsidiary of the SuMi TRUST Group, has an advisor system, and the names, etc. are as stated in the above table. SuMi TRUST Bank does not have an advisory system.

- Names of former Presidents and Chairpersons of SuMi TRUST Holdings and SuMi TRUST Bank, the core subsidiary of the SuMi TRUST Group, who have been appointed as advisors of SuMi TRUST Bank, etc. are stated and former Presidents and Chairpersons of The Sumitomo Trust and Banking Co., Ltd. and The Chuo Mitsui Trust and Banking Company, Limited prior to the merger are included.
- The date of resignation from the position of President, etc. indicates the latest date of resignation from the position of President or Chairperson of either of the companies.
- The final term of office is a maximum six years, as a general rule, provided, however, that the person has not reached the age of 72. Such persons are given the official title of senior corporate advisor and elected each year by resolution of the Board of Directors of SuMi TRUST Bank. After the end of the term of office as advisor, such persons may conclude a part-time engagement contract and be allowed to use the title of honorary advisor. In such cases, such persons are elected each year by approval of the President of SuMi TRUST Bank.
- Compensation is determined by taking into consideration work attitude and other factors. Honorary advisors are not paid compensation, as a general rule.
- Offices are provided outside of the Head Office building of SuMi TRUST Bank, and company cars and shared secretaries are also provided, as necessary.
- Advisors are not involved, in any way, in management's decision-making and do not receive regular reports from management.
- The advisor system of SuMi TRUST Bank was deliberated and the details of the system underwent reviews by the Nomination Committee of SuMi TRUST Holdings. SuMi TRUST Holdings intends to continue operation of the advisor system with the involvement of the Nomination Committee going forward, where deliberation on the change in advisor system and yearly report about operating situation, etc. are planned.

2. Items Related to Business Execution, Audit and Oversight, Nominations and Setting of Compensation, etc. (Overview of Corporate Governance Framework) (Updated)

<Supervisory body>

(1) The Board of Directors

- a) The Board of Directors shall ensure fairness and transparency of SuMi TRUST Group' corporate management by setting out the basic policy of managing SuMi TRUST Group and overseeing overall management of it.
- b) Except for matters which are required to by law to be decided by the Board of Directors, the Board of Directors shall, in principle, delegate decisions on the execution of business to executive officers (*1), and shall supervise the execution of business by executive officers (*1), etc. as its central role.
- c) The Board of Directors of SuMi TRUST Holdings shall have no more than 20 directors, which is the number of directors prescribed in the Articles of Incorporation, and it shall comprise such number of directors as shall be necessary and appropriate to provide an effective supervising system, required of a financial holding company managing the business administration of SuMi TRUST Group. However, due consideration shall also be given to securing diversity and professionalism at the Board of Directors in deciding such number.
- d) In light of the importance of external directors' functions in the corporate governance, SuMi TRUST Holdings shall operate the Board of Directors with at least one-third of directors being independent external directors, in principle.

(2) Outline of Committees

<Statutory committees>

A. Nominating Committee

- a) Chairperson: Isao Matsushita (external director)
- b) Composition: 5 external, 2 internal
- c) Main Roles and Responsibility
 - The Nominating Committee shall determine the content of proposals regarding the election and dismissal of directors to be submitted to a shareholders meeting.
 - The Nominating Committee shall receive requests for consultation on the election and dismissal of executive officers (*1) including President from the Board of Directors, and shall deliberate and make reports on these.
 - The Nominating Committee shall receive requests for consultation on the election and dismissal of directors and corporate auditors from the Board of Directors of SuMi TRUST Bank and SuMiTAM, and shall deliberate and make reports on these.
 - The Nominating Committee shall receive requests for consultation on revision of the succession plan of management of SuMi TRUST Holdings, SuMi TRUST Bank, and SuMiTAM from the Board of Directors, and shall deliberate and make reports on these.

B. Compensation Committee

- a) Chairperson: Isao Matsushita (external director)
- b) Composition: 4 external, 2 internal
- c) Main Roles and Responsibility
 - The Compensation Committee shall prescribe policy on decisions on the content of remuneration for individual executive officers (*1) and directors.
 - The Compensation Committee shall decide the content of remuneration for individual executive officers (*1) and directors in accordance with the policy stated in item above.
 - The Compensation Committee shall receive requests for consultation on policy on decisions on the content of remuneration for directors, etc., from the Board of

Directors of SuMi TRUST Bank and SuMiTAM, and shall deliberate and make reports on these.

C. Audit Committee

- a) Chairperson: Shinichi Saito (external director)
- b) Composition: 3 external, 2 internal
- c) Main Roles and Responsibility

The Audit Committee shall audit the execution of duties by executive officers (*1) and directors and shall prepare audit reports.

The Audit Committee shall determine the content of proposals regarding the election and dismissal of a financial auditor, and the refusal to reelect a financial auditor, to be submitted to a shareholders meeting.

The Audit Committee shall appropriately exercise consent rights regarding decisions on remuneration of the financial auditor.

<Voluntary committees, etc.>

D. Risk Committee

- a) Chairperson: Mikio Araki (external director)
- b) Composition: 4 external (including 2 external experts), 1 internal (including 2 external experts)
- c) Main Roles and Responsibility

The Risk Committee shall receive requests for consultation on the following items from the Board of Directors, and shall review the appropriateness, etc. of them, and shall make reports.

- Matters concerning the business environment surrounding SuMi TRUST Group, top risks, and materiality;
- Matters concerning the management of risk appetite framework, risk management, and monitoring the effectiveness of the internal control system related to compliance management of SuMi TRUST Group; and
- Other matters to be deemed necessary by the Board of Directors.

E. Conflicts of Interest Committee

- a) Chairperson: Hideki Kanda* (external expert) *External director of SuMi TRUST Bank
- b) Composition: 3 external (including 2 external experts), 1 internal (including 2 external experts)
- c) Main Roles and Responsibility

The Conflicts of Interest Committee shall receive requests for consultation on the following items from the Board of Directors, and shall review the appropriateness, etc. of them, and shall make reports.

- Matters concerning the validity of systems for management of conflicts of interest of SuMi TRUST Group;
- Matters concerning the effectiveness of management of conflicts of interest, management of customer explanation, and management of customer support of SuMi TRUST Group and the enhancement of systems for management of these;
- Matters concerning the policy on fiduciary duty of SuMi TRUST Group and the action plans, etc. of each SuMi TRUST Group company;
- Particularly important matters concerning dissemination of management of conflicts of interest and fiduciary duty in SuMi TRUST Group; and
- Other matters to be deemed necessary by the Board of Directors.

F. External Directors' Meeting

SuMi TRUST Holdings holds External Directors' Meetings consisting solely of external directors to further enhance the effectiveness of corporate governance. At the meetings, exchanges of opinion are conducted based on the operations of the Board of Directors meetings, discussion themes, fulfillment status of the roles of the Board of Directors and results of the Evaluation of the Board of Directors, which contributes to the objectivity and the strengthening of the independence of the Board of Directors.

<Executive body>

(3) Management-related meetings

Under the Board of Directors, the Executive Committee has been established, which the President chairs and relevant officers attend. Based on basic policies determined at the Board of Directors meetings, significant matters relating to business execution are discussed and determined, and matters resolved at the Board of Directors meeting undergo preliminary discussion by the Executive Committee.

(4) Others

SuMi TRUST Holdings has established various committees including the Sustainability Promotion Committee to deliberate measures to promote sustainability initiatives and the Business Risk Management Committee.

3. Reasons for Adopting the Current Corporate Governance System

SuMi TRUST Holdings has decided on a policy to further enhance SuMi TRUST Holding's corporate governance by changing from being a "company with a Board of Corporate Auditors" to a "company with Three Committees", and the transfer of the corporate governance system was approved at its ordinary general meeting of shareholders on June 29, 2017. SuMi TRUST Holdings considers it important to satisfy both of the requirements for management capability leading to prompt business execution and supervisory and restraining capabilities that ensure sound management, in order to further strengthen its profit earning capability and enhance its corporate governance in the future, while appropriately responding to movements such as rapid changes in the environment surrounding the financial business and the tightening of financial regulations in and outside of Japan. And from the perspective of realizing these targets, SuMi TRUST Holdings considers it desirable, as a part of the measures to further strengthen its structure, to change to a "company with Three Committees."

III. Status of Execution of Measures Concerning Shareholders and Other Interested Parties

1. Measures to Vitalize the General Shareholders' Meeting and Facilitate the Exercise of Voting Rights (Updated)

	Supplemental remarks
Prompt distribution of convocation notices for the general shareholders' meeting	The convocation notice for the annual general shareholders' meeting held on June 28, 2018, was dispatched on June 7, after being posted on SuMi TRUST Holdings' website on May 30, for the purpose of prompt notification.
Electronic voting	SuMi TRUST Holdings has been enabling shareholder voting through the Internet (including smartphones) and mobile phones.
Participation in the Electronic Voting Platform system and other efforts to create a better environment in which institutional investors can exercise their voting rights.	SuMi TRUST Holdings participates in the Electronic Voting Platform system.
Provision of convocation notice summaries in English	An English version of the convocation notice summaries was prepared and posted on SuMi TRUST Holdings' website at the same time as the Japanese version, from one week before the convocation notice was dispatched, and it has also been provided through the Electronic Voting Platform, for greater convenience to overseas
Others	SuMi TRUST Holdings sends convocation notices by e-mail to those shareholders who have consented to such electronic notification arrangements. Further, in conducting general shareholders meetings, SuMi TRUST Holdings has been aiming at easy-to-understand meetings for shareholders, by such means as increasing use of visual aids. In addition, after the meetings, SuMi TRUST Holdings posts notices of resolutions and the results of voting on its website, as well as providing them through the Electronic Voting Platform system.

2. Activities Regarding IR (Updated)

	Supplemental remarks	Personal explanation by representative
Preparation and publication of disclosure policy	SuMi TRUST Holdings has established the Disclosure Policy and disseminates it externally, as well as to SuMi TRUST Group's officers and employees for the purpose of appropriately implementing it. The Disclosure Policy serves as SuMi TRUST Group's IR activity guidelines, setting forth that we should make efforts to proactively disclose corporate information which we deem useful	

	for our shareholders, investors, etc. in understanding the SuMi TRUST Group, adopting timeliness, accuracy, and fairness as basic requirements thereof.	
Regular information meetings for individual investors	SuMi TRUST Holdings holds corporate briefings via securities companies and so on, where the President, and the officer and employee in charge of IR explain SuMi TRUST Group's characteristics, earnings results and financial condition, and management strategies, etc.	Yes
Regular information meetings for analysts and institutional investors	SuMi TRUST Holdings holds investor meetings semi-annually (around May and November), inviting securities company analysts and institutional investors, with the President explaining SuMi TRUST Group's earnings results and management strategies, etc. Further, SuMi TRUST Holdings holds one-on-one and group meetings for analysts and institutional investors from time to time, with the President, and the officer and employee in charge of IR providing explanations. SuMi TRUST Holdings also holds the SuMi TRUST IR Day which provides opportunities for officers in charge of businesses to give explanation on business strategies as well as for external directors to explain on the corporate governance status, etc.	Yes
Regular information meetings for overseas investors	SuMi TRUST Holdings' President, or the officer in charge of IR, visits major institutional investors in the U.S., Europe, and Asia, etc. several times per year, explaining SuMi TRUST Group's earnings results and financial condition, and management strategies, etc. Further, SuMi TRUST Holdings regularly participates in IR conferences organized in Japan by securities companies for overseas institutional investors, as well as participates in such conferences held overseas.	Yes
Posting of IR materials on website	Promptly after their announcement, SuMi TRUST Holdings discloses various types of IR information and information for shareholders, etc. on its website. The types of information disclosed are, among others, as follows: financial results and related explanatory materials; timely disclosure materials and press releases; annual securities reports and quarterly securities reports; summary of financial results; investor meetings' presentation materials; integrated reports (disclosure reports); annual reports; business reports; the Basic Policy on Corporate Governance; stock information; rating information; analyst coverage; convocation notices for general shareholders' meetings; results of voting, etc. Videos of investors meetings and corporate briefings	

	<p>for individual investors are also posted on the website.</p> <p>Further, on the page of its website entitled “For Individual Investors,” explanation is provided for individual investors regarding SuMi TRUST Group’s business and operational results in an easy-to-understand format.</p> <p>For overseas institutional investors, too, SuMi TRUST Holdings provides various types of IR information and so on in a timely manner via its English website.</p> <p>Japanese URL: https://www.smth.jp/ir/index.html English URL: https://www.smth.jp/en/ir/index.html</p>	
<p>Establishment of department and/or manager in charge of IR</p>	<p>SuMi TRUST Holdings has appointed an officer in charge of IR, as well as established the IR Department as the section in charge of daily IR activities. SuMi TRUST Holdings makes efforts to appropriately disclose corporate information, as well as aiming for highly transparent corporate management through proactive IR activities and constructive dialogues with both domestic and foreign shareholders and investors.</p> <p>Officer in charge of IR: Hitoshi Sato, Managing Executive Officer (*2) Section in charge of IR: IR Department The General Manager of the IR Department serves as the administrative IR contact person.</p>	
<p>Others</p>	<p><Internal organic cooperation to assist dialogues with shareholders></p> <p>Through cooperation with the management team and each section, the officer in charge of IR and the section in charge of IR endeavors to appropriately understand management information and other internal information, and make efforts to disclose such information in a timely, accurate, and fair manner, as well as leverage such information for the purpose of constructive dialogue with shareholders and investors.</p> <p><Feedback regarding shareholders’ opinions and IR activities to the management team and the Board of Directors></p> <p>We provide timely and appropriate feedback to the management team regarding opinions or concerns, etc. expressed by shareholders, investors, and analysts, etc. In addition to an overall report on IR activities, reports regarding such opinions or concerns, etc. shall be regularly made to the Board of Directors.</p> <p><Management of insider information during dialogues></p> <p>For the purpose of the management of insider</p>	

	<p>information, the SuMi TRUST Group regularly disseminates, within the SuMi TRUST Group, the laws, regulations, and rules, etc. which the SuMi TRUST Group is bound to comply with, as well as instructions for the appropriate handling of insider information. Strict management and operation is also conducted during dialogues with shareholders and investors.</p> <p><Enhancement of opportunities for constructive dialogue with shareholders, etc.> For the purpose of the enhancement of constructive dialogue with shareholders and investors, SuMi TRUST Holdings participates in events with other listed companies in Japan to actively exchange opinions and engage in discussions on corporate governance with domestic and international institutional investors.</p>	
--	--	--

3. Measures for Respecting the Position of Stakeholders (Updated)

	Supplemental remarks
Rules for respecting the position of stakeholders through internal regulations, etc.	The “Basic Policy on the Social Responsibility of the Sumitomo Mitsui Trust Group (Sustainability Policy)” sets forth that the SuMi TRUST Group shall “respect dialogue with all stakeholders, including clients, shareholders, investors, employees, business partners, local communities, NPOs, government authorities and international institutions, and play an active role in building a sustainable society.” The SuMi TRUST Group has announced such policies externally.
Implementation of environmental activities, Sustainability activities, etc.	The SuMi TRUST Group has formulated its Sustainability Policy at the Group’s Sustainability Promotion Committee chaired by the President, and has been promoting the Group’s sustainability activities under the initiative of the Sustainability Management Office, under the Corporate Planning Department. Especially it places emphasis on the response to the risks relating to environmental and social issues, the development of products and services contribute to the resolution of the issues, and the social activities at each site of the SuMi TRUST Group. Regarding our environmental preservation activities, the SuMi TRUST Group has formulated the group’s common “Environmental Policy,” “Action Guidelines for Mitigating Climate Change,” and “Action Guidelines for Preserving Biodiversity,” and makes available, at its Directly Owned Subsidiaries, environment-related investment and loan products, trust products, and real property products, etc. to individual and corporate customers. Further, the SuMi TRUST Group has been promoting activities to reduce green house gas emissions from its business activities, and purchasing of papers that gives consideration to the environment and society based on its CSR procurement policy.
Formulation of policies on providing	The “Basic Policy on the Social Responsibility of the Sumitomo Mitsui Trust Group (Sustainability Policy)” sets forth that the SuMi TRUST Group shall “build sound and proper relationships

information to stakeholders	with stakeholders, and fulfill our responsibilities as members of society, engaging in fair competition and appropriate disclosure of corporate information, etc.” The SuMi TRUST Group provides relevant information through its CSR/ESG reports and its website, etc.
Others	<p>In May 2017, The SuMi TRUST Group established the “Declaration on Work Style Reform”. The SuMi TRUST Group declares it a top commitment to offer a workplace where the diversity and creativity of its employees are more fully utilized to add value to the organization and where employees can have pride and be highly motivated in fulfilling their missions. The Group as a whole will work towards Work Style Reform. In February 2018, The SuMi TRUST Group was certified by the Ministry of Economy, Trade and Industry as a “Certified Health and Productivity Management Organization (White 500)” for practicing outstanding health and productivity management.</p> <p>Also, The SuMi TRUST Group believes that the key to combining its variety of functions and creating new business models as a trust bank group is to respect diverse ways of thinking and viewpoints and to offer its employees the opportunity to realize their potential. To this end, SuMi TRUST Holdings established a Diversity & Inclusion Office (hereinafter, “D&I Office”), following SuMi TRUST Bank’s establishment of D&I Office in October 2016, in order to promote D&I initiatives of the Group as a whole. In addition, the SuMi TRUST Group has been promoting the appointment of personnel according to their capabilities and placing the right people in the right positions. SuMi TRUST Holdings has appointed Ms. Hiroko Kawamoto as a female external director. She was managing the promotion of customer satisfaction and women’s activities in All Nippon Airways Co., Ltd., is currently serving as Executive Vice President and COO of ANA Strategic Research Institute Co., Ltd. SuMi TRUST Bank also appointed two female executive officers (*2) as of September 30, 2018.</p> <p>Furthermore, SuMi TRUST Bank has formulated an action plan of a general business operator based on the Act on the Promotion of Women’s Participation and Advancement in the Workplaces. SuMi TRUST Bank has also formulated a plan to increase the number of female employees at the level of Section Manager or above to 300 by the end of March 2020(*).While working and implementing measures to broaden career planning options for female employees through training for women in leadership positions carried out at each level and seminars for female employees lectured by our officers , SuMi TRUST Bank is enhancing its infrastructure for supporting diverse ways of working by increasing the provision of information to employees on maternity leave and childcare leave, holding IkuBoss lectures by external lecturer at internal meetings for domestic managers , adopting the system where employees can apply for relocation or absences from work along with the relocation of marital partner, and other methods.</p> <p>(*) Status of Promotion of Women to Managerial Positions in</p>

SuMi TRUST Bank as of September 30, 2018
2 female executive officers (*2);
17 female employees at the level of general manager;
247 female employees at the level of section manager; and
1,103 female employees at the level of assistant manager
Total: 1,369(approximately 22.4% of the total managerial positions)

In addition to the above, to promote understanding of diversity and enable each employee to demonstrate their capabilities to the maximum extent, the SuMi TRUST Group is pressing forward with the following initiatives:

- Conduct various types of seminar designed to improve the business mind, enhance skills and build networks for employees hired at overseas bases;
- Expand the active participation of employees with disabilities in each workplace by increasing the number of participants in courses for acquiring certification as a vocational counselor for persons with disabilities; and
- Establish an in-house consultation contact point as a safety net and adopt marriage leave to the employees who marry the same-gender, in addition to conducting internal training designed to promote understanding of sexual orientation and gender identity.
- In October 2018, a voluntary organization supporting the promotion and establishment of diversity management relating to LGBT awarded SuMi TRUST Holdings “Gold,” the highest assessment, in the “Pride Index,” which evaluates such initiatives, for two consecutive years since 2017.

IV. Matters Regarding Internal Control System, etc.

1. Fundamental Perspectives on Internal Control System and Establishment of Relevant Structures (Updated)

As a bank holding company, the Board of Directors of SuMi TRUST Holdings is fully aware of its responsibility for the management administration of the SuMi TRUST Group, and has developed “a system to ensure the conformity of executive officers’ (*1) execution of duties with laws, regulations, and the Articles of Incorporation, and other necessary systems to ensure the appropriateness of business activities of SuMi TRUST Holdings and those of the corporate group comprising SuMi TRUST Holdings and its subsidiaries, etc.” as follows, based on the Board of Directors’ resolution concerning the “Basic Policy on Internal Control”:

(1) Compliance Structure

- a. Basic compliance policies for the SuMi TRUST Group are established.
- b. With respect to important issues pertaining to compliance, resolutions and reporting are undertaken by the Board of Directors, based on a report by Risk Committee, an advisory body of the Board of Directors.
- c. A Basic Policy on the Management of Conflicts of Interest of the SuMi TRUST Group has been prescribed and a management system is in place to ensure that the interests of customers of the SuMi TRUST Group are not unfairly harmed.
- d. Important matters concerning the management of conflicts of interests are resolved by and reported at the Board of Directors meetings upon receiving reports from the Conflicts of Interest Committee, an advisory body to the Board of Directors.
- e. A supervisory department for compliance is set up at the head office. In addition, each department assigns a person of action and a person of authority.
- f. A concrete action plan to ensure compliance (compliance program) is formulated each fiscal year, and instructions are passed on to the Directly Owned Subsidiaries, etc. for them to prepare their own plans. In addition, the status of these plans – in terms of progress made and goals achieved – are monitored and evaluated.
- g. A handbook (compliance manual) for officers and employees is formulated. Opportunities for compliance-oriented education and training are offered to them on an ongoing basis.
- h. Officers and employees must report violations of law pertaining to the operation of SuMi TRUST Holdings’ business, and a compliance hotline system is established to enable officers, employees, etc. to report directly to special contact points both in-house and outside SuMi TRUST Holdings.
- i. SuMi TRUST Holdings and its subsidiaries take a firm stand to prevent dealings with antisocial forces and maintain no association whatsoever with such elements. A structure, underpinned by close ties with external professionals, particularly the police, is put in place to promote communication and cooperation among relevant departments and thereby facilitate an organized response in the event an executive or an employee is approached with an inappropriate request. Under no circumstances will we engage in transactions to benefit persons or organizations that threaten the order and safety of civil society.
- j. Money laundering and terrorist financing are major threats to a sound financial system, and SuMi TRUST Holdings takes a firm stand against money laundering and terrorist financing and shall comply fully with related laws and regulations.

(2) Risk Management Structure

- a. Basic risk management policies for the SuMi TRUST Group are established.
- b. With respect to important issues pertaining to risk management, resolution and reporting are undertaken by the Board of Directors, based on a report by Risk Committee, an advisory body of the Board of Directors.
- c. A supervisory department for risk management is set up at the head office, and a risk management department is established for each risk category.
- d. A plan pertaining to risk management for the SuMi TRUST Group is formulated and instructions are passed on to the Directly Owned Subsidiaries, etc. for them to prepare their own plans. In addition, the status of these plans – in terms of improvements made and goals achieved – are monitored and evaluated.
- e. Opportunities for risk management-oriented education and training are offered to officers and employees on an ongoing basis.
- f. Management activities relating to business continuity in preparation for emergencies have been developed to maintain and continue normal business operations of the SuMi TRUST Group.

(3) Structure for Execution of Duties

- a. Except for matters which are required by law to be decided by the Board of Directors, the Board of Directors of SuMi TRUST Holdings, in principle, delegates decisions on the execution of business to executive officers (*1). In addition to establishing the Executive Committee, comprising executive officers (*1), etc., various committees shall be established as advisory bodies to the Executive Committee.
- b. The Board of Directors sets out basic points pertaining to the organizational structure and the division of duties, as well as the organization of and authority granted to officers and employees, to ensure the smooth and appropriate execution of duties by executive officers (*1) (officers responsible for business execution at the subsidiaries, etc.).
- c. In-house regulations are prepared in accordance with relevant legislation, and in the event said legislation is revised or abrogated, required amendments to in-house regulations will be implemented promptly.

(4) Ensuring Management Transparency

- a. Internal control systems pertaining to financial reporting are developed to ensure the appropriateness of accounting methods and reliability of financial reporting, and the effectiveness of the systems is evaluated.
- b. The SuMi TRUST Group shall establish an accounting hotline to receive reports from within the Group and outside of the Group for information on accounting, internal controls involving accounting and misconduct or improper treatment on audit items. The hotline shall be established at a law firm, outside of the Group, and the Audit Committee Office serves as the secretariat for its investigations.
- c. Management-related information is managed appropriately and disclosed in a timely, accurate and fair manner.

(5) The SuMi TRUST Group Management Structure

- a. SuMi TRUST Holdings developed compliance and risk management structures applicable to the entire SuMi TRUST Group.
- b. SuMi TRUST Holdings reviews intra-Group transactions of particular significance to the SuMi TRUST Group from the perspectives of risk management, compliance, and consistency with SuMi TRUST Group's strategic objectives.
- c. Subsidiaries, etc. reports regularly to SuMi TRUST Holdings about their execution of business activities and their financial situations, among other

things.

- d. SuMi TRUST Holdings manages the appropriateness and efficiency of the business operation of subsidiaries, etc. according to the size and nature of their activities.

(6) Information Storage and Management Structure

- a. Minutes which record progress on agendas and specific points of discussion are prepared at the General Meeting of Shareholders and at Board of Directors and Executive Committee meetings and kept with related materials.
- b. The Board of Directors sets out the basic points pertaining to information storage and management, such as the organizational structure for information management and the classification of management categories, according to importance.

(7) Internal Audit Structure

- a. An internal auditing unit, which is independent from business execution units and sufficiently capable of fulfilling a restraining function, is established.
- b. Internal audit plans and basic policies for developing internal audit structures for the SuMi TRUST Group are established, and the internal auditing unit conducts audits of each business execution units and, if necessary, of subsidiaries, etc. and point out matters to be improved and make recommendations thereof.
- c. The results of internal audits and the status of internal audit plans – in terms of progress and goals achieved – are reported to the Board of Directors and Audit Committee in a timely and appropriate manner.

(8) Structure for Audit Committee's Audits

- a. Employees assisting Audit Committee in its duties
 - (a) An Audit Committee Office is established to assist Audit Committee members in the execution of their duties, and an appropriate number of directors, executive officers (*2) or employees, including one office manager, are assigned thereto.
 - (b) Staff of the Audit Committee Office work to assist Audit Committee members with their duties under the directions and orders of Audit Committee members.
 - (c) The personnel affairs and employment terms of staff of the Audit Committee Office are discussed in advance with the Audit Committee.
 - (d) The executive officers (*1) give consideration so that staff of the Audit Committee Office are not subject to unjust restrictions in conducting work to assist the Audit Committee's duties.
- b. System for reporting to Audit Committee
 - (a). Directors (excluding directors who are Audit Committee members), executive officers (*1) (*2), and employees shall report the following matters (including those regarding subsidiaries, etc.) to the Audit Committee:
 - a) Facts about possible significant damage to SuMi TRUST Holdings or its subsidiaries, situations that could significantly damage the credibility of SuMi TRUST Holdings or its subsidiaries, material defects or problems concerning the system or procedures of internal control, or material violations of laws, regulations, or the Articles of Incorporation, or fraud, etc.
 - b) Status of reports to the compliance hotline system
 - c) Status of internal audit processes and the results thereof
 - d) Status of business execution and any other matters on which the Audit Committee requests a report
 - (b) Directors, corporate auditors, executive officers (*2) and employees of subsidiaries, etc. or persons who have received reports from such persons shall

report the matters described in a. above (excluding (c)) to the Audit Committee of SuMi TRUST Holdings.

(c) The Audit Committee may demand a report, as necessary, from persons described in a. and b. above regarding matters described in a. and b. above.

(d) Persons who have given reports based on a. and b. above shall not be treated unfavorably on account of having given such reports, and that fact shall be thoroughly communicated.

c. Other systems to ensure the effectiveness of Audit Committee's audits

(a) Directors, executive officers (*1) (*2), and employees cooperate with Audit Committee in good faith in the audit activities.

(b) Full-time Audit Committee members are selected.

(c) Audit Committee members may attend meetings of the Board of Directors as well as any other meetings (including meetings of subsidiaries) Audit Committee deems necessary to the execution of their duties.

(d) Representative executive officers (*1) exchange views with Audit Committee on a periodic basis and at the request of Audit Committee.

(e) The internal auditing unit conducts prior consultations with and obtains the approval of the Audit Committee regarding the internal audit plan, as well as conducts investigations, etc. under the instruction of the Audit Committee, when so instructed.

(f) Departments other than the Internal Audit Department that are involved in internal controls including finance, risk management and compliance shall also strive to maintain smooth cooperative relationships with the Audit Committee.

(g) To ensure the effectiveness of audits conducted by the Audit Committee of SuMi TRUST Holdings across the SuMi TRUST Group, SuMi TRUST Holdings proposes candidates for corporate auditors (excluding candidates from other group companies including joint ventures) to the Audit Committee or to each Audit Committee member in the selection of part-time corporate auditors of its subsidiaries, etc. (including Audit Committee members of a company with three committees, or Audit & Supervisory Committee members of a company with an Audit & Supervisory Committee, hereinafter the same applies). The Audit Committee or each Audit Committee member may voice opinions, as necessary, regarding this proposal.

(h) SuMi TRUST Holdings pays expenses necessary for the execution of duties by the Audit Committee and Audit Committee members to ensure the effectiveness of audits.

2. Fundamental Perspectives on Eliminating Antisocial Forces and Establishment of Relevant Structures

(1) Fundamental Perspectives

The Basic Policy on Internal Control states, "SuMi TRUST Holdings and its subsidiaries take a firm stand to prevent dealings with antisocial forces and maintain no association whatsoever with such elements. A structure, underpinned by close ties with external professionals, particularly the police, is put in place to promote communication and cooperation among relevant departments and thereby facilitate an organized response in the event an officer or an employee is approached with an inappropriate request. Under no circumstances will we engage in transactions to benefit persons or organizations that threaten the order and safety of civil society." In addition, the "Codes of Conducts (Value)," with which SuMi TRUST Group's officers and employees must comply, state, "We continue to take a resolute stance against antisocial forces, which may threaten public order and the security of civil society."

(2) Establishment of Relevant Structures

SuMi TRUST Holdings has established a supervisory department for handling antisocial forces and a department for communicating with external professionals, among other units, and assigned staff in charge of preventing inappropriate requests. In addition, SuMi TRUST Holdings has developed a compliance manual, etc. and informed and given training, etc. to directors, officers and employees on the handling of antisocial forces. Further, it has developed various systems to prevent transactions with antisocial forces, such as the supervisory department, which conducts centralized management of information on antisocial forces and uses it to prevent transactions with antisocial forces.

Each of the SuMi TRUST Group companies has also developed various systems in communication with SuMi TRUST Holdings in order to handle antisocial forces.

V. Other

1. Introduction of Defense Measures Against Takeovers

Introduction of defense measures against takeovers	None
--	------

Supplementary Remarks on This Item

None.

2. Other Matters Concerning the Corporate Governance System, etc.

None.

<Reasons for appointment of directors (excluding external directors)>

Name of directors	Position	Reasons for appointment
Tetsuo Ohkubo	Director, President (Representative Executive Officer (*1))	<p>Tetsuo Ohkubo has experience in positions for supporting a part of corporate management as an Officer in charge of the Corporate Management Sections of SuMi TRUST Holdings, and he assumed office as President in April 2017, followed by the office as Director, President in June 2017. In addition, he has experience of serving as an Officer in charge of the Corporate Management Sections of SuMi TRUST Bank, as well as experience in diversified departments such as an Officer in charge of the Wholesale Financial Services Business (current Wholesale Total Solution Services Business). In SuMi TRUST Bank, he also served as Deputy President for one (1) year from April 2016, and is serving as Director since April 2017.</p> <p>SuMi TRUST Holdings expects that, by using his experience of corporate management and business management accumulated thus far, he will provide contribution to the sustainable growth of SuMi TRUST Group and the enhancement of the Group's corporate value, in a position of leading the Group's overall management. Accordingly, SuMi TRUST Holdings nominated him as a Director.</p>
Jiro Araumi	Director, Senior Managing Executive Officer (*1) (Representative Executive Officer (*1))	<p>Jiro Araumi served as Senior Managing Executive Officer (*2) from April 2017, and is serving as Director, Senior Managing Executive Officer (*1) in charge of Asset Management Business Planning Dept. of SuMi TRUST Holdings since June 2017. He has been also serving as Director, Senior Managing Executive Officer (*2) of SuMi TRUST Bank in charge of Fiduciary Services Business and Asset Management Business; therefore, he has extensive knowledge and experience with regard to management administration and business operations of a trust bank group. SuMi TRUST Holdings expects that, based on his experience accumulated thus far, he will play a leading role in achieving the sustainable growth of SuMi TRUST Group and the enhancement of the Group's corporate value, in a position of assisting the Group's overall management. Accordingly, SuMi TRUST Holdings nominated him as a Director.</p>

Toru Takakura	Director, Senior Managing Executive Officer (*1) (Representative Executive Officer (*1))	Toru Takakura served as Senior Managing Executive Officer (*2) from April 2017, and is serving as Director, Senior Managing Executive Officer (*1) in charge of Human Resources Dept. of SuMi TRUST Holdings since June 2017. He has been also serving as Deputy Officer in charge of the Retail Total Solution Services Business as a Director, Senior Managing Executive Officer (*2) of SuMi TRUST Bank; therefore, he has extensive knowledge and experience with regard to management administration and business operations of a trust bank group. SuMi TRUST Holdings expects that, based on his experience accumulated thus far, he will play a leading role in achieving the sustainable growth of SuMi TRUST Group and the enhancement of the Group's corporate value, in a position of assisting the Group's overall management. Accordingly, SuMi TRUST Holdings nominated him as a Director.
Masaru Hashimoto	Director, Executive Officer (*1)	Masaru Hashimoto has served as an Officer in charge, etc. of the Corporate Management Sections of SuMi TRUST Holdings, from October 2016 to March 2017, served as Deputy President and Executive Officer (*2), and is serving as Director, Executive Officer (*1) since June 2017. He has been in a position of assisting the Group's overall management. At SuMi TRUST Bank, he took office as President since April 2017, and has been responsible for the overall management. SuMi TRUST Holdings expects that he will play a leading role in achieving the sustainable growth of SuMi TRUST Group and the enhancement of the Group's corporate value, in a position of conducting the Group's overall management. Accordingly, SuMi TRUST Holdings nominated him as a Director.
Kunitaro Kitamura	Director	Kunitaro Kitamura has served as the President of SuMi TRUST Holdings for five (5) years since April 2012; therefore, he has extensive knowledge and experience with regard to the overall management of a trust bank group. SuMi TRUST Holdings expects that, by using his experience accumulated thus far, he will continuously provide contribution to the sustainable growth of SuMi TRUST Group and the enhancement of the Group's corporate value. Accordingly, SuMi TRUST Holdings nominated him as a Director
Hitoshi Tsunekage	Director	Hitoshi Tsunekage has served as the Chairman of SuMi TRUST Holdings since April 2011. He also served as President of SuMi TRUST Bank

		<p>up to March 2017, and is serving as Chairman since June 2017; therefore, he has extensive knowledge and experience with regard to the overall management of a trust bank group. SuMi TRUST Holdings expects that, by using his experience accumulated thus far, he will continuously provide contribution to the sustainable growth of SuMi TRUST Group and the enhancement of the Group's corporate value. Accordingly, SuMi TRUST Holdings nominated him as a Director.</p>
Yasuyuki Yagi	Director	<p>Yasuyuki Yagi has experience of serving as general manager of credit supervision department and president of a real estate lending company, and served as Executive Officer (*2) in charge of Kinki area as a Senior Managing Executive Officer (*2) of SuMi TRUST Bank; therefore, he has extensive knowledge and experience with regard to business operations. Also, he served as Corporate Auditor of SuMi TRUST Holdings for one (1) year from June 2016, is serving as Director and Audit Committee member of SuMi TRUST Holdings since June 2017, and has accumulated knowledge and experience of auditing the overall status of execution of business from a fair and objective viewpoint; therefore, SuMi TRUST Holdings expects that he will provide contribution to enhancement of soundness and transparency of the management. Accordingly, SuMi TRUST Holdings nominated him as a Director.</p>
Hiroshi Misawa	Director	<p>After serving as general manager of Fiduciary Services Business Sections and Management Administration Sections, Hiroshi Misawa served as Managing Executive Officer (*2) of SuMi TRUST Bank; therefore, he has extensive knowledge and experience with regard to management administration and business operations. Also, he served as Auditor of SuMi TRUST Bank for one (1) year from April 2016, is serving as Director and Audit Committee member of SuMi TRUST Holdings since June 2017, and has accumulated knowledge and experience of auditing the overall status of execution of business from a fair and objective viewpoint; therefore, SuMi TRUST Holdings expects that he will provide contribution to enhancement of soundness and transparency of the management. Accordingly, SuMi TRUST Holdings nominated him as a Director.</p>

<Reasons for appointment of executive officers)>

Name of directors	Position	Reasons for appointment
Tetsuo Ohkubo	President	Tetsuo Ohkubo has working experience in the corporate management sections and his background includes general manager and other posts. His tenure has already been for about 7 years as Director of SuMi TRUST Holdings and for about 1 year as Director, President (Representative Executive Officer), and he has taken the leading role in the entire SuMi TRUST Group. With these achievements, he has the knowledge and experience to carry out corporate management accurately, fairly and efficiently, and SuMi TRUST Holdings expects that he will play the leading role in executing the duties of SuMi TRUST Holdings. Accordingly, SuMi TRUST Holdings has selected him as a Director.
Jiro Araumi	Senior Managing Executive Officer	Jiro Araumi successively held various posts including general manager in the Fiduciary Services Business section and Deputy Officer in charge of Fiduciary Services Businesses of SuMi TRUST Bank, and Officer in charge of Asset Management Business Planning Department of SuMi TRUST Holdings. He has served as Director, Senior Managing Executive Officer (Representative Executive Officer) for about 1 year. With these achievements, he has the knowledge and experience to carry out corporate management accurately, fairly and efficiently, and SuMi TRUST Holdings expects that he will play the leading role in executing the duties of SuMi TRUST Holdings. Accordingly, SuMi TRUST Holdings has selected him as a Director.
Toru Takakura	Senior Managing Executive Officer	Toru Takakura has working experience in the corporate management sections, and he successively held various posts including general manager as well as Officer in charge of Human Resources Department of SuMi TRUST Holdings. He has served as Director, Senior Managing Executive Officer (Representative Executive Officer) for about 1 year. With these achievements, he has the knowledge and experience to carry out corporate management accurately, fairly and efficiently, and SuMi TRUST Holdings expects that he will play the leading role in executing the duties of SuMi TRUST Holdings. Accordingly, SuMi TRUST Holdings has selected him as a Director.
Akihiko Shirayama	Senior Managing Executive	Akihiko Shirayama has working experience in the corporate management sections, and he successively held various posts including

	Officer	<p>general manager as well as Officer in charge of Real Estate Business of SuMi TRUST Bank and Officer in charge of Planning and Coordination Department of SuMi TRUST Holdings. He has served as Senior Managing Executive Officer of SuMi TRUST Holdings for about 1 year. With these achievements, he has the knowledge and experience to carry out corporate management accurately, fairly and efficiently, and SuMi TRUST Holdings expects that he will play the leading role in executing the duties of SuMi TRUST Holdings. Accordingly, SuMi TRUST Holdings has selected him as a Director.</p>
Yoshiaki Koshimura	Senior Managing Executive Officer	<p>Yoshiaki Koshimura has working experience in the corporate management sections, and he successively held various posts including general manager as well as Officer in charge of Planning and Coordination Department of SuMi TRUST Holdings. He has served as Senior Managing Executive Officer of SuMi TRUST Holdings for about 1 year. With these achievements, he has the knowledge and experience to carry out corporate management accurately, fairly and efficiently, and SuMi TRUST Holdings expects that he will play the leading role in executing the duties of SuMi TRUST Holdings. Accordingly, SuMi TRUST Holdings has selected him as a Director.</p>
Tadashi Nishimura	Senior Managing Executive Officer	<p>Tadashi Nishimura has working experience in the corporate management sections, and he successively held various posts including general manager as well as Officer in charge of Financial Planning Department of SuMi TRUST Holdings. He has served as Senior Managing Executive Officer of SuMi TRUST Holdings for about 1 year. With these achievements, he has the knowledge and experience to carry out corporate management accurately, fairly and efficiently, and SuMi TRUST Holdings expects that he will play the leading role in executing the duties of SuMi TRUST Holdings. Accordingly, SuMi TRUST Holdings has selected him as a Director.</p>
Yutaka Nishida	Senior Managing Executive Officer	<p>Yutaka Nishida has working experience in the corporate management sections, and he successively held various posts including Regional Executive of Europe of SuMi TRUST Bank as well as Officer in charge of Risk Management Department, Compliance Department, Legal Department and Fiduciary Duties Planning and Promotion Department of SuMi TRUST Holdings. He has served as Senior Managing Executive Officer of SuMi TRUST Holdings for about 1 year. With these</p>

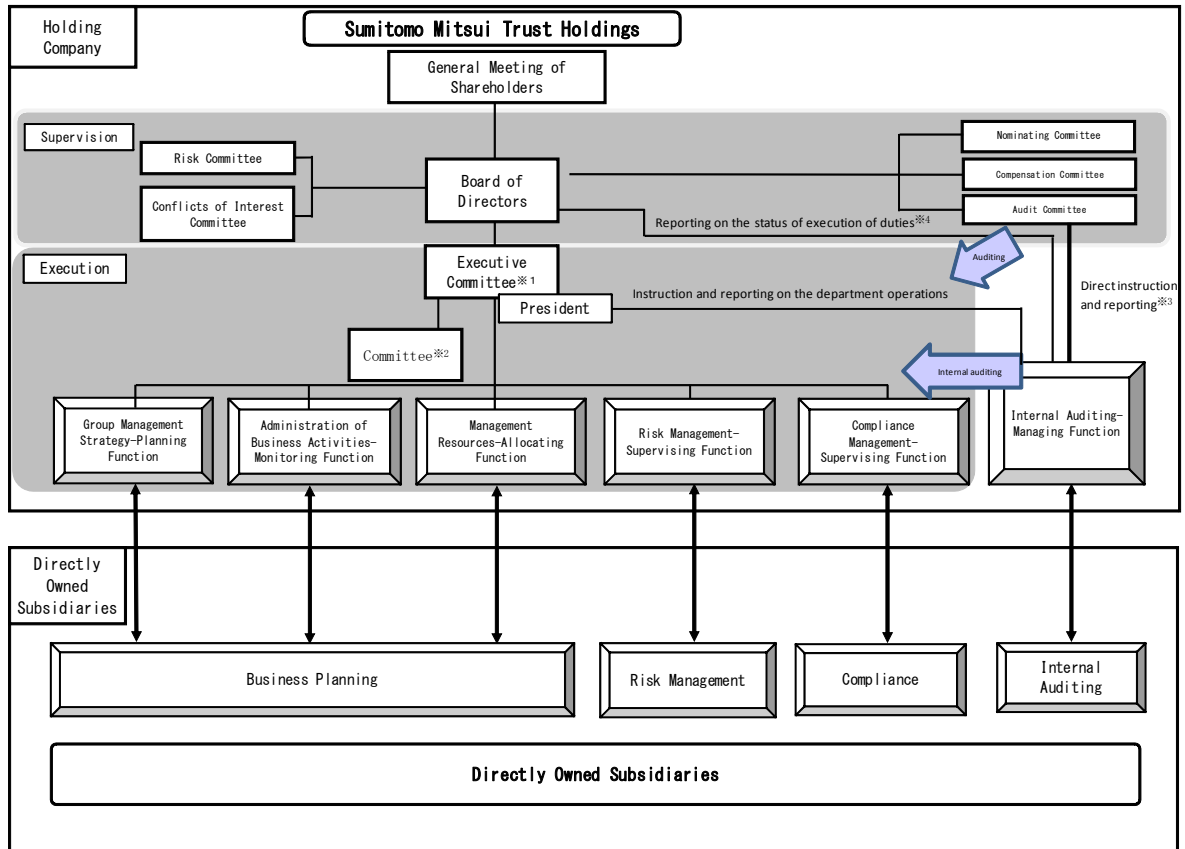
		<p>achievements, he has the knowledge and experience to carry out corporate management accurately, fairly and efficiently, and SuMi TRUST Holdings expects that he will play the leading role in executing the duties of SuMi TRUST Holdings. Accordingly, SuMi TRUST Holdings has selected him as a Director.</p>
Yasumi Nose	Managing Executive Officer	<p>Yasumi Nose successively held various posts including general manager of System Planning Department as well as Officer in charge of IT & Business Process Planning Department of SuMi TRUST Holdings. He has served as Managing Executive Officer of SuMi TRUST Holdings for about 1 year. With these achievements, he has the knowledge and experience to carry out corporate management accurately, fairly and efficiently, and SuMi TRUST Holdings expects that he will play the leading role in executing the duties of SuMi TRUST Holdings. Accordingly, SuMi TRUST Holdings has selected him as a Director.</p>
Atsushi Kaibara	Managing Executive Officer	<p>Atsushi Kaibara has working experience in the corporate management sections, and he successively held various posts including general manager as well as Officer in charge of Stock Transfer Agency Services Business of SuMi TRUST Bank and Officer in charge of Corporate Administration Department and Corporate Secretariat of SuMi TRUST Holdings. He has served as Managing Executive Officer of SuMi TRUST Holdings for about 1 year. With these achievements, he has the knowledge and experience to carry out corporate management accurately, fairly and efficiently, and SuMi TRUST Holdings expects that he will play the leading role in executing the duties of SuMi TRUST Holdings. Accordingly, SuMi TRUST Holdings has selected him as a Director.</p>
Akira Yokota	Managing Executive Officer	<p>Akira Yokota has working experience in the corporate management sections, and he successively held various posts including general manager as well as Officer in charge of Human Resources Department of SuMi TRUST Holdings. He has served as Managing Executive Officer of SuMi TRUST Holdings for about 1 year. With these achievements, he has the knowledge and experience to carry out corporate management accurately, fairly and efficiently, and SuMi TRUST Holdings expects that he will play the leading role in executing the duties of SuMi TRUST Holdings. Accordingly, SuMi TRUST Holdings has selected him as a Director.</p>

Shigeki Tanaka	Managing Executive Officer	Shigeki Tanaka has working experience in the corporate management sections, and he successively held various posts including general manager as well as Officer in charge of Corporate Planning Department and Corporate Secretariat of SuMi TRUST Holdings. He has served as Managing Executive Officer of SuMi TRUST Holdings for about 1 year. With these achievements, he has the knowledge and experience to carry out corporate management accurately, fairly and efficiently, and SuMi TRUST Holdings expects that he will play the leading role in executing the duties of SuMi TRUST Holdings. Accordingly, SuMi TRUST Holdings has selected him as a Director.
Hitoshi Sato	Managing Executive Officer	Hitoshi Sato has working experience in the Corporate Management Department and IR Department, and his background includes the General Manager of New York Branch as well as Officer in charge of Credit Risk Management of SuMi TRUST Bank. He has served as Director, Managing Executive Officer of SuMi TRUST Bank for about 3 years. With these achievements, he has the knowledge and experience to carry out corporate management accurately, fairly and efficiently, and SuMi TRUST Holdings expects that he will play the leading role in executing the duties of SuMi TRUST Holdings. Accordingly, SuMi TRUST Holdings has selected him as a Director.
Masaru Hashimoto	Executive Officer	Masaru Hashimoto has working experience in the corporate management sections, and his background includes general manager. He has served as Director, Executive Officer of SuMi TRUST Holdings for about 1 year and as President (Representative Director) of SuMi TRUST Bank for about 1 year. With these achievements, he has the knowledge and experience to carry out corporate management accurately, fairly and efficiently, and SuMi TRUST Holdings expects that he will play the leading role in executing the duties of SuMi TRUST Holdings. Accordingly, SuMi TRUST Holdings has selected him as a Director.
Kiyomitsu Asahi	Executive Officer	Kiyomitsu Asahi has working experience in the corporate management sections, and he successively held various posts including general manager as well as Officer in charge of Internal Audit Department of SuMi TRUST Holdings. He has served as Executive Officer of SuMi TRUST Holdings for about 1 year. With these achievements, he has the knowledge and experience to carry out corporate management accurately, fairly and efficiently, and SuMi

		TRUST Holdings expects that he will play the leading role in executing the duties of SuMi TRUST Holdings. Accordingly, SuMi TRUST Holdings has selected him as a Director.
--	--	--

<Management Structure of the SuMi TRUST Group>

Corporate Governance System



※1 Including Sustainability Promotion Committee

※2 Business Risk Management Committee, IT Committee, Conflicts of Interest Management Enhancement Committee, Information Disclosure Committee

※3 Direct instruction and reporting relating to the audit of Audit Committee leveraging internal control system

※4 Reporting the status of execution of duties of the Officer in charge of Internal Audit Department (Executive Officer*1)

<Outline of SuMi TRUST Holdings' Timely Disclosure System>

1. Basic Initiative Policy

Adopting observance standards that all executives and employees must uphold to ensure the transparency of corporate management through appropriate and fair disclosure of corporate information, the SuMi TRUST Group has set out "Information Disclosure Rules" and "Information Disclosure Guidelines," and has established an internal control system to ensure that disclosures are made in accordance with relevant laws, regulations and rules, including the Companies Act, the Banking Act, and the Financial Instruments and Exchange Act. Based on this philosophy, SuMi TRUST Holdings has established a "Disclosure Policy" in order to clarify its basic policy on disclosure both internally and externally, thereby ensuring appropriate disclosure. In this way, it is working to ensure the transparency of corporate management through appropriate disclosure of corporate information.

2. Outline of Initiatives

In order to ensure timely, accurate, and fair disclosure of management-related information, the SuMi TRUST Group has established the Information Disclosure Committee, which deliberates on the necessity and appropriateness of disclosure of management-related information and information that could be management-related. It also considers the appropriateness of the information disclosure system, particularly its establishment and management.

