

Board of Directors and Executive Officers (As of July 1, 2011)

Chairman of the Board, President
(Representative Director)
Hitoshi Tsunekage

Director, Deputy President Executive Officer
(Representative Director)
Akio Otsuka

Director, Deputy President Executive Officer
(Representative Director)
Kiyoshi Mukohara

Director, Senior Executive Officer
Shuichi Kusakawa

Director, Senior Executive Officer
Rikiya Hattori

Director, Senior Executive Officer
Sumikazu Tsutsui

Director, Managing Executive Officer
Hidehiko Asai

Director, Managing Executive Officer
Tetsuo Ohkubo

Director, Managing Executive Officer
Fuminari Suzuki

Director, Managing Executive Officer
Koichi Hozumi

Director, Managing Executive Officer
Junichi Sayato

Senior Corporate Auditor
Masaru Suzuki

Corporate Auditor*
Koichi Takamura

Corporate Auditor
Tatsuya Tsuboi

Corporate Auditor*
Hitoshi Maeda

Corporate Auditor*
Toshio Hoshino

Corporate Auditor
Teruhiko Sugita

Managing Executive Officer
Yasuyuki Yagi

Managing Executive Officer
Yukihiko Kitano

Managing Executive Officer
Kouji Nohara

Managing Executive Officer
Koji Yosomiya

Managing Executive Officer
Yoshikazu Tanaka

Managing Executive Officer
Jun Sasaki
General Manager of Global Markets Planning
Department and Treasury Units, Global Markets

Managing Executive Officer
Hideki Hiraki
General Manager of Corporate Risk Management
Department

Executive Officer
Shigemasa Shibata

Executive Officer
Keiji Tanaka
Regional Executive of Nagoya and General
Manager of Nagoya Branch

Executive Officer
Satoru Abe
General Manager of Retail Business Planning and
Promotion Department

Executive Officer
Kunihiko Tsuneyoshi
General Manager of Corporate Business
Department I, Osaka

Executive Officer
Toshio Yamasaki
General Manager of Umeda Branch

Executive Officer
Akihiko Shirayama
General Manager of Planning and Coordination
Department and Head Office Executive

Executive Officer
Hideaki Kosone

Executive Officer
Tadashi Nishimura
General Manager of Financial Management
Department

Executive Officer
Masahiro Tsuchiya
General Manager of Corporate Planning
Department

Executive Officer
Toru Takakura
Head Office Executive and General Manager of
Integration Promotion Department

Executive Officer
Ichiro Kokubo
General Manager of IT & Business Process Planning
Department

Executive Officer
Masakazu Kinoshita

Executive Officer
Mashiba Fujita
General Manager of Fukuoka Branch

Executive Officer
Shinji Nagano
General Manager of Real Estate Business
Development Department

Executive Officer
Kazuhiro Sekine
General Manager of Corporate Trust Business
Department I

Executive Officer
Akira Kamiyo
General Manager of Global Credit Supervision
Department I

Executive Officer
Toshiya Nishino
General Manager of Kyoto Branch

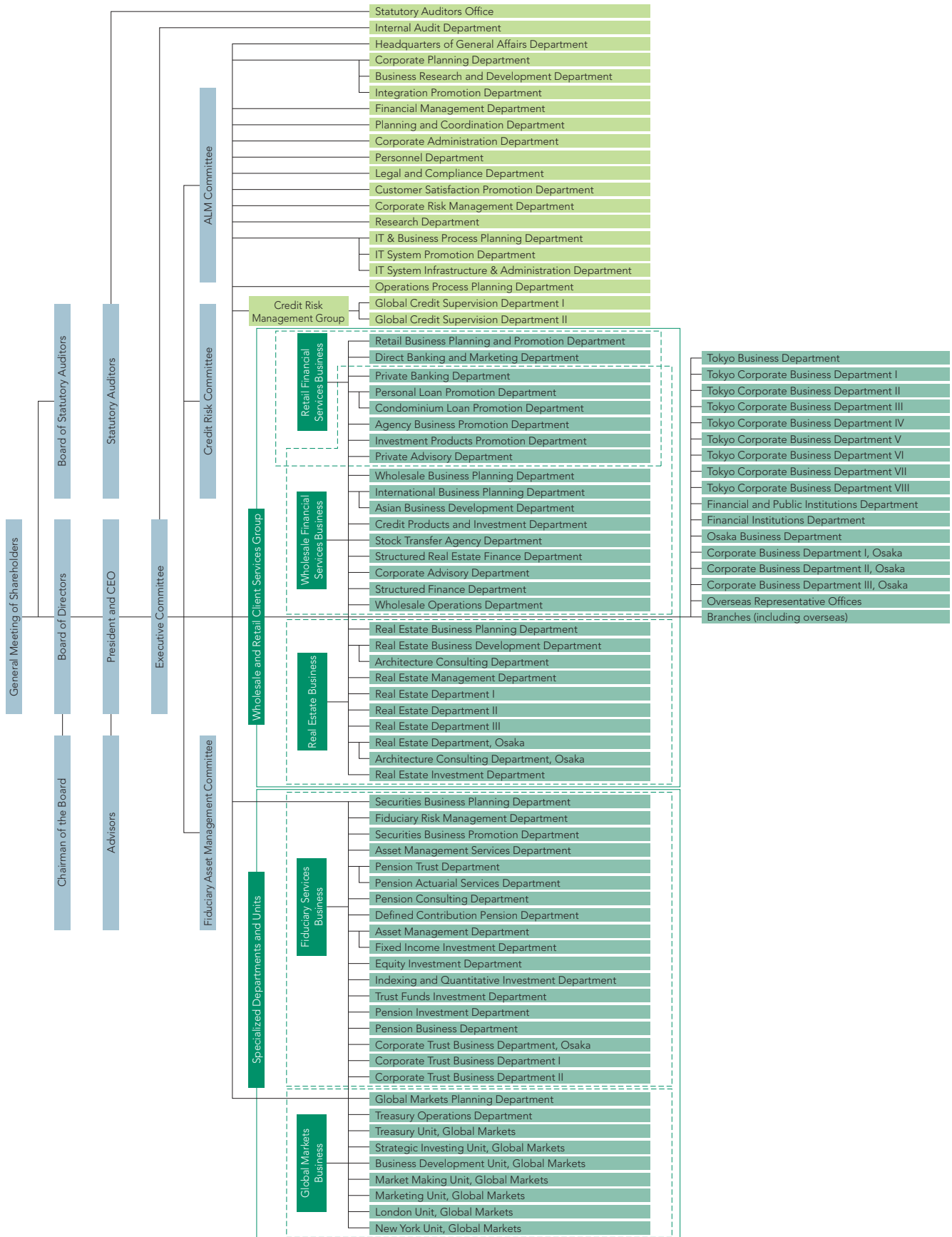
* Messrs. Koichi Takamura, Hitoshi Maeda and Toshio Hoshino are external auditors defined in Article 2, Item 16 of the Companies Act.

Employees (As of March 31, 2011)

Category	March 31, 2011	March 31, 2010	March 31, 2009	March 31, 2008	March 31, 2007
Total Employees	6,110	6,104	6,049	5,869	5,609
Male	3,085	3,065	3,056	2,993	2,890
Female	3,025	3,039	2,993	2,876	2,719
Average Age	39 years, 1 month	38 years, 9 months	38 years, 7 months	38 years, 6 months	38 years, 5 months
Male	41 years, 6 months	41 years, 3 months	41 years, 1 month	40 years, 11 months	40 years, 8 months
Female	36 years, 6 months	36 years, 2 months	36 years, 0 months	35 years, 10 months	35 years, 11 months
Average Length of Employment	11 years, 8 months	11 years, 3 months	10 years, 11 months	10 years, 10 months	10 years, 10 months
Male	13 years, 3 months	12 years, 11 months	12 years, 8 months	12 years, 5 months	12 years, 5 months
Female	9 years, 11 months	9 years, 6 months	9 years, 2 months	9 years, 1 month	9 years, 2 months
Average Monthly Salary	¥ 435 thousand	¥ 423 thousand	¥ 429 thousand	¥ 438 thousand	¥ 420 thousand
Male	¥ 535 thousand	¥ 521 thousand	¥ 534 thousand	¥ 547 thousand	¥ 525 thousand
Female	¥ 324 thousand	¥ 316 thousand	¥ 313 thousand	¥ 316 thousand	¥ 300 thousand

- Notes: 1. Figures for the average age, average length of employment and average monthly salary are rounded down to their respective units.
 2. Figures for total employees do not include temporary staff (of whom there were 85 as of March 31, 2007; 81 as of March 31, 2008; 80 as of March 31, 2009; 90 as of March 31, 2010; and 98 as of March 31, 2011).
 3. Figures for total employees include overseas staff (of whom there were 309 as of March 31, 2007; 330 as of March 31, 2008; 360 as of March 31, 2009; 349 as of March 31, 2010; and 349 as of March 31, 2011).
 4. Average monthly salary includes overtime pay in March and excludes bonuses.

Organizational Chart (As of April 1, 2011)



Top Message
Top Interview

Financial Highlights

Special Feature on the
Management Integration

Review of Operations

Management Structure

Corporate Data

Branches (As of June 30, 2011)

Domestic Network

The Chuo Mitsui Trust and Banking Company, Limited, Chuo Mitsui Asset Trust and Banking Company, Limited, and The Sumitomo Trust and Banking Co., Ltd., will plan to merge on April 1, 2012, to establish "Sumitomo Mitsui Trust Bank, Limited." Prior to the merger, we decided to change branch numbers and names with respect to some branches with the same name and number at the two trust banks from October 11, 2011 (there will be no change in branch numbers of Sumitomo Trust). Thank you for your understanding.

Kinki

Osaka Business Department

5-33, Kitahama 4-chome, Chuo-ku, Osaka 540-8639, Japan

Umeda Branch

8-47, Kakuda-cho, Kita-ku, Osaka 530-0017, Japan

Nishinomiya Satellite Office, Umeda Branch

3-33, Takamatsu-cho, Nishinomiya, Hyogo 663-8204, Japan

Ashiya Satellite Office, Umeda Branch

5-2, Funado-cho, Ashiya, Hyogo 659-0093, Japan

Koshien Satellite Office, Umeda Branch

4-3, Koshien Takashio-cho, Nishinomiya, Hyogo 663-8166, Japan

* This office will be closed down on July 8, 2011.

Namba Branch

1-60, Namba 5-chome, Chuo-ku, Osaka 542-0076, Japan

Namba Housing Loan Center Satellite Office

4-4, Namba 4-chome, Chuo-ku, Osaka 542-0076, Japan

Abenobashi Branch

6-1, Abenosuji 1-chome, Abeno-ku, Osaka 545-0052, Japan

Sakai Branch

59-2, Mikunigaoka Miyuki-dori, Sakai-ku, Sakai, Osaka 590-0028, Japan

Senboku Satellite Office, Sakai Branch

2-1, Chayamadai 1-chome, Minami-ku, Sakai, Osaka 590-0115, Japan

Toyonaka Branch

1-1, Hon-machi 1-chome, Toyonaka, Osaka 560-0021, Japan

Senri Chuo Branch

1-3, Shinsenri Higashi-machi 1-chome, Toyonaka, Osaka 560-0082, Japan

Hirakata Branch

13-20, Oka Higashi-cho, Hirakata, Osaka 573-0032, Japan

Takatsuki Branch

5-20, Konya-machi, Takatsuki, Osaka 569-0804, Japan

Ibaraki Branch

2-30, Futaba-cho, Ibaraki, Osaka 567-0829, Japan

Yao Branch

6-8, Higashi Hon-machi 3-chome, Yao, Osaka 581-0004, Japan

Wakayama Branch

3-6, Higashi Kuramae-cho, Wakayama 640-8203, Japan

Nara Saidaiji Branch

1-50, Saidaiji Higashi-machi 2-chome, Nara 631-0821, Japan

Kyoto Branch

612, Karasuma-dori Shijo-sagaru Suiginya-cho, Shimogyo-ku, Kyoto 600-8411, Japan

Kawanishi Branch

7-18, Chuo-cho, Kawanishi, Hyogo 666-0016, Japan

Kobe Branch

1-6, Goko-dori 8-chome, Chuo-ku, Kobe, Hyogo 651-0087, Japan

Akashi Branch

6-31, Oakashi-cho 1-chome, Akashi, Hyogo 673-0891, Japan

Himeji Branch

252, Ekimae-cho, Himeji, Hyogo 670-0927, Japan

Kanto, Koshinetsu

Tokyo Business Department

3-1, Yaesu 2-chome, Chuo-ku, Tokyo 104-8476, Japan

Toranomon Satellite Office, Tokyo Business Department

7-1, Nishi Shinbashi 1-chome, Minato-ku, Tokyo 105-0003, Japan

South Tower Satellite Office, Tokyo Business Department

9-2, Marunouchi 1-chome, Chiyoda-ku, Tokyo 100-6611, Japan

Tokyo Chuo Branch

3-1, Yaesu 2-chome, Chuo-ku, Tokyo 104-8476, Japan

Ueno Branch

20-8, Ueno 1-chome, Taito-ku, Tokyo 110-0005, Japan

Kashiwa Satellite Office, Ueno Branch

1-2, Asahi-cho 1-chome, Kashiwa, Chiba 277-0852, Japan

Ikebukuro Branch

41-7, Higashi Ikebukuro 1-chome, Toshima-ku, Tokyo 170-0013, Japan

Shinjuku Branch

26-11, Shinjuku 3-chome, Shinjuku-ku, Tokyo 160-0022, Japan

Tama Sakuragaoka Satellite Office, Shinjuku Branch

7-5, Sekido 1-chome, Tama, Tokyo 206-0011, Japan

Chitose Karasuyama Satellite Office, Shinjuku Branch

4-31, Minami Karasuyama 6-chome, Setagaya-ku, Tokyo 157-0062, Japan

Shibuya Branch

22-3, Jinnan 1-chome, Shibuya-ku, Tokyo 150-0041, Japan

Futako Tamagawa Satellite Office, Shibuya Branch

22-12, Tamagawa 2-chome, Setagaya-ku, Tokyo 158-0094, Japan

Aobadai Satellite Office, Shibuya Branch

9-2, Aobadai 2-chome, Aoba-ku, Yokohama, Kanagawa 227-0062, Japan

Kichijoji Branch

2-14, Kichijoji Hon-cho 2-chome, Musashino, Tokyo 180-0004, Japan

Tachikawa Satellite Office, Kichijoji Branch

4-5, Akebono-cho 2-chome, Tachikawa, Tokyo 190-0012, Japan

Hachioji Branch

1-4, Asahi-cho, Hachioji, Tokyo 192-0083, Japan

Chiba Branch

1-15, Fujimi 1-chome, Chuo-ku, Chiba 260-0015, Japan

Tsudanuma Branch

14-5, Maebara Nishi 2-chome, Funabashi, Chiba 274-0825, Japan

Koshigaya Branch

14-22, Yayoi-cho, Koshigaya, Saitama 343-0816, Japan

Omiya Branch

6-1, Daimon-cho 1-chome, Omiya-ku, Saitama 330-0846, Japan

Tokorozawa Branch

12-1, Hiyoshi-cho, Tokorozawa, Saitama 359-1123, Japan

Yokohama Branch

14-10, Minami Saiwai 1-chome, Nishi-ku, Yokohama, Kanagawa 220-0005, Japan

Konandai Branch

15-2-102, Konandai 3-chome, Konan-ku, Yokohama, Kanagawa 234-0054, Japan

Fujisawa Branch

1-2, Kugenuma Higashi, Fujisawa, Kanagawa 251-0026, Japan

Sagami Ono Branch

13-7, Sagamiono 3-chome, Minami-ku, Sagamihara, Kanagawa 252-0303, Japan

Kofu Branch

17-14, Marunouchi 1-chome, Kofu, Yamanashi 400-0031, Japan

Niigata Branch

1178-1, Kami Okawa Mae-dori Rokuban-cho, Chuo-ku, Niigata 951-8068, Japan

Hokkaido, Tohoku

Sapporo Branch

3, Kita 1-jo Nishi 3-chome, Chuo-ku, Sapporo, Hokkaido 060-0001, Japan

Sendai Branch

2-10, Chuo 2-chome, Aoba-ku, Sendai, Miyagi 980-0021, Japan

Tokai, Hokuriku

Nagoya Branch

1-1, Sakae 4-chome, Naka-ku, Nagoya, Aichi 460-0008, Japan

Nagoyaekimae Branch

24-30, Meieki Minami 1-chome, Nakamura-ku, Nagoya, Aichi 450-0003, Japan

Shizuoka Branch

3-10, Koya-machi, Aoi-ku, Shizuoka 420-0852, Japan

Kanazawa Branch

1-18, Kami Tsutsumi-cho, Kanazawa, Ishikawa 920-0869, Japan

Customer Services Promotion Office

9-2, Marunouchi 1-chome, Chiyoda-ku,
Tokyo 100-6611, Japan

Chugoku, Shikoku

Okayama Branch

1-5, Ekimoto-machi, Kita-ku, Okayama 700-0024, Japan

Fukuyama Branch

15-1, Moto-machi, Fukuyama, Hiroshima 720-0063, Japan

Hiroshima Branch

2-12, Kamiya-cho 2-chome, Naka-ku,
Hiroshima 730-0031, Japan

Yamaguchi Hofu Branch

4-24, Ebisu-machi 1-chome, Hofu,
Yamaguchi 747-0036, Japan

Matsuyama Branch

11-1, Sanban-cho 4-chome, Matsuyama,
Ehime 790-0003, Japan

Kyushu

Fukuoka Branch

12-1, Tenjin 2-chome, Chuo-ku, Fukuoka 810-0001, Japan

Kumamoto Branch

2-5, Tetori Hon-cho, Kumamoto 860-0808, Japan

Kagoshima Branch

7-8-101, Kinsei-cho, Kagoshima 892-0828, Japan

Overseas Network

Branch

London Branch

155 Bishopsgate, London EC2M 3XU, U.K.

New York Branch

527 Madison Avenue, New York, NY 10022, U.S.A

Singapore Branch

8 Shenton Way, #45-01, Singapore 068811,
Republic of Singapore

Shanghai Branch

50F Jin Mao Tower, 88 Shiji Dadao Pudong New Area,
Shanghai 200121, People's Republic of China

Representative Office

Jakarta Representative Office

11th Floor, Summitmas I, Jl. Jenderal Sudirman,
Kaveling 61-62, Jakarta 12190, Indonesia

Beijing Representative Office

7th Floor, Chang Fu Gong Office Building,
A-26, Jianguomenwai Dajie, Chaoyang District,
Beijing 100022, People's Republic of China

Seoul Representative Office

100-716, 20th Floor, Samsung Life Building,
#150, 2-Ka, Taepyung-Ro, Chung-Ku, Seoul, Korea

Bangkok Representative Office

15th Floor, GPF Witthayu Tower A, Suite 1502,
93/1 Wireless Road, Pathumwan, Bangkok 10330, Thailand

Number of Contracted Trust Agencies* (As of June 30, 2011)

*Trust agency is a collective term for trust contract agencies under the Trust Business Act, and agencies concurrently engaged in trust business under Article 1 of the Act on Provision, etc. of Trust Business by Financial Institutions.

Type		Number of Agencies			
		Trust Contract Agencies	Agencies Engaged in Concurrent Business		
			Stock Transfer Agency Service	Service Related to Wills	Solicitation for National Pension Fund
Banks, Shinkin Banks, etc.	53	39	28	34	15
Regional Banks	29	27	22	20	5
Second Regional Banks	8	5	5	6	4
Shinkin Central Bank, Shinkin Banks	13	4	—	6	6
Shoko Chukin Bank	1	1	—	1	—
(Total of Financial Institutions)	(51)	(37)	(27)	(33)	(15)
City Banks, etc.	2	2	1	1	—
Securities Firms	5	2	4	4	—
Business Enterprises	11	1	—	10	—
Total	69	42	32	48	15

Bank Service Agency (As of June 30, 2011)

Trade Name of Bank Service Agency	The Chuo Mitsui Trust and Banking Company, Limited
Business Offices, etc. Operating Bank Agency Service	Head Office (Branch), Shinbashi Branch, Shinjuku-Nishiguchi Branch, Shibuya Branch, Ikebukuro Branch, Omiya Branch, Chiba Branch, Yokohamaekinishiguchi Branch, Sapporo Branch, Sendai Branch, Kanazawa Branch, Shizuoka Branch, Nagoya Branch, Kyoto Branch, Osaka Branch, Kobe Branch, Hiroshima Branch, Takamatsu Branch, Fukuoka Branch, Oita Branch (Total: 20 branches)

Subsidiaries and Affiliated Companies (As of June 30, 2011)

Japan

Name	Location	Date of Establishment	Paid-in Capital (Millions)	Scope of Business	Ownership (%)	STB Group Ownership (%)
The Sumishin Shinko Company Limited	5-33, Kitahama 4-chome, Chuo-ku, Osaka	June 30, 1948	¥ 50	Building Management Business	100.0	0.0
Sumishin Guaranty Company Limited	11-5, Nihonbashi-honcho 4-chome, Chuo-ku, Tokyo	August 25, 1977	¥ 300	Loan Guarantee Business	100.0	0.0
STB Wealth Partners Co., Limited	3-1, Yaesu 2-chome, Chuo-ku, Tokyo	November 6, 1989	¥ 155	Consulting Business	100.0	0.0
Sumishin Real Estate Loan & Finance, Limited	2-1, Yaesu 2-chome, Chuo-ku, Tokyo	January 22, 1992	¥ 6,000	Money Lending Business	100.0	0.0
Sumishin Business Service Company, Limited	1-10, Nikko-cho, Fuchu, Tokyo	July 3, 1995	¥ 80	Clerical Agency, Temporary Staffing Business	100.0	0.0
STB Real Estate Investment Management Co., Ltd.	9-2, Marunouchi 1-chome, Chiyoda-ku, Tokyo	November 7, 2005	¥ 300	Investment Advisory, Investment Management	100.0	0.0
STB Business Partners Co., Ltd.	9-2, Marunouchi 1-chome, Chiyoda-ku, Tokyo	April 3, 2006	¥ 100	Training Programs, Personnel-related Services	85.0	15.0
Nikko Asset Management Co., Ltd.	7-1, Akasaka 9-chome, Minato-ku, Tokyo	December 1, 1959	¥ 17,363	Investment Management, Investment Advisory	98.6	0.0
Japan TA Solution, Ltd.	1-1, Nikko-cho, Fuchu, Tokyo	July 1, 1998	¥ 2,005	IT, Calculation Outsourcing Business	80.0	0.0
Sumishin Panasonic Financial Services Co., Ltd.	5-30, Doujima 1-chome, Kita-ku, Osaka	February 27, 1967	¥ 25,584	Leasing, Installment Purchase Services, Credit Card Business	84.8	0.0
Sumishin Card Company, Limited	11-5, Nihonbashi-honcho 4-chome, Chuo-ku, Tokyo	June 24, 1983	¥ 50	Credit Card Business	50.0	45.0
STB Investment Corporation	4-13, Kyobashi 1-chome, Chuo-ku, Tokyo	March 22, 2000	¥ 35	Venture Capital Business	40.0	60.0
Sumishin Information Service Company Limited	1-3, Shinsenri Nishi-machi 1-chome, Toyonaka, Osaka	February 12, 1973	¥ 100	IT, Calculation Outsourcing Businesses	35.0	65.0
STB Asset Management Co., Ltd.	3-1, Yaesu 2-chome, Chuo-ku, Tokyo	November 1, 1986	¥ 300	Investment Management, Investment Advisory	30.0	70.0
STB Research Institute Co., Ltd.	3-13, Toranomon 4-chome, Minato-ku, Tokyo 105-0003, Japan	July 1, 1988	¥ 300	Survey, Research, Consulting, Investment Advisory	29.8	70.1
Sumishin Realty Company, Limited	3-1, Yaesu 2-chome, Chuo-ku, Tokyo	January 24, 1986	¥ 300	Real Estate Brokerage Business	5.0	95.0
SBI Sumishin Net Bank, Ltd.	6-1, Roppongi 1-chome, Minato-ku, Tokyo	June 3, 1986	¥ 31,000	Banking Business	50.0	0.0
Japan Pension Operation Service, Ltd.	1, Nihonbashi-hokozakicho 24-chome, Chuo-ku, Tokyo	December 21, 2004	¥ 1,500	Calculation of Pension Payments, etc., Clerical Outsourcing Business	50.0	0.0
BUSINEXT CORPORATION	31-19, Shiba 2-chome, Minato-ku, Tokyo	January 18, 2001	¥ 9,000	Money Lending Business	40.0	0.0
Sumishin Life Card Company, Limited	31-19, Shiba 2-chome, Minato-ku, Tokyo	October 27, 2004	¥ 255	Credit Cards Business	40.0	0.0
Top REIT Asset Management Co., Ltd.	13-1, Nihonbashi 1-chome, Chuo-ku, Tokyo	October 22, 2004	¥ 300	Investment Corporation, Asset Management Business	38.0	0.0
HR One Corporation	4-1, Shibakouen 2-chome, Minato-ku, Tokyo	May 20, 2002	¥ 519	HR-related Services Business	35.8	0.0
Japan Trustee Services Bank, Ltd.*	8-11, Harumi 1-chome, Chuo-ku, Tokyo	June 20, 2000	¥ 51,000	Trust, Banking Businesses	33.3	0.0

* Sumitomo Mitsui Trust Holdings' direct ownership of Japan Trustee Services Bank, Ltd., is 33.3%.

Overseas

Name	Location	Date of Establishment	Paid-in Capital (Millions)	Scope of Business	Ownership (%)	STB Group Ownership (%)
The Sumitomo Trust Finance (H.K.) Ltd.	Suites 704-706, 7th Floor, Three Exchange Square, 8 Connaught Place, Central, Hong Kong	July 4, 1978	\$ 45	Finance Business	100.0	0.0
Sumitomo Trust and Banking (Luxembourg) S.A.	18, Boulevard Royal, L-2449, Luxembourg, Grand Duchy of Luxembourg	April 22, 1985	\$ 30	Trust, Finance, Securities Businesses	100.0	0.0
Sumitomo Trust and Banking Co. (U.S.A.)	111 River Street, Hoboken, NJ 07030, U.S.A.	May 20, 2002	\$ 56	Finance, Trust Businesses	100.0	0.0
STB Consulting (China) Co., Ltd.	3rd Floor, Chang Fu Gong Office Building, A-26, Jianguomenwai Dajie, Chaoyang District, Beijing 100022, People's Republic of China	October 25, 2004	¥ 200	Consulting Business	100.0	0.0
STB Omega Investment Ltd.	PO Box 309, Ugland House, Grand Cayman, KY1-1104, Cayman Islands	June 6, 2006	\$ 60	Finance Business	75.0	0.0
STB Finance Cayman Ltd.	PO Box 309, Ugland House, Grand Cayman, KY1-1104, Cayman Islands, c/o The Sumitomo Trust and Banking Co., Ltd. Treasury Operations Department	January 19, 1993	\$ 0.01	Finance Business	100.0	0.0
STB Preferred Capital 2 (Cayman) Ltd.	PO Box 309, Ugland House, Grand Cayman, KY1-1104, Cayman Islands, c/o The Sumitomo Trust and Banking Co., Ltd. Treasury Operations Department	November 21, 2005	¥ 51,500	Finance Business	100.0	0.0
STB Preferred Capital 3 (Cayman) Ltd.	PO Box 309, Ugland House, Grand Cayman, KY1-1104, Cayman Islands, c/o The Sumitomo Trust and Banking Co., Ltd. Treasury Operations Department	February 14, 2007	¥ 51,500	Finance Business	100.0	0.0
STB Preferred Capital 4 (Cayman) Ltd.	PO Box 309, Ugland House, Grand Cayman, KY1-1104, Cayman Islands, c/o The Sumitomo Trust and Banking Co., Ltd. Treasury Operations Department	May 26, 2008	¥ 111,600	Finance Business	100.0	0.0
STB Preferred Capital 5 (Cayman) Ltd.	PO Box 309, Ugland House, Grand Cayman, KY1-1104, Cayman Islands, c/o The Sumitomo Trust and Banking Co., Ltd. Treasury Operations Department	November 26, 2008	¥ 70,900	Finance Business	100.0	0.0
Fresco Asset Funding Corporation	PO Box 309, Ugland House, Grand Cayman, KY1-1104, Cayman Islands	January 19, 2000	\$ 0.001	Finance Business	0.0	0.0
Crecer Asset Funding Corporation	PO Box 309, Ugland House, Grand Cayman, KY1-1104, Cayman Islands	August 29, 2001	\$ 0.001	Finance Business	0.0	0.0
Zijin Trust Co., Ltd.	30th Floor, Zifeng Tower, 2 Zhongshan Road(N), Gulou District, Nanjing 210008, People's Republic of China	September 25, 1992	RMB 500	Trust, Finance Businesses	19.9	0.0

Top Message
Top Interview

Financial Highlights

Special Feature on the
Management Integration

Review of Operations

Management Structure

Corporate Data