

Board of Directors and Executive Officers (As of July 1, 2020)

Director, President (Representative Executive Officer) Tetsuo Ohkubo	Director (External) Shinichi Saito* ¹	Executive Officer* ² Masahiro Tsuchiya	Executive Officer* ² Toshiaki Nakano
Director, Senior Managing Executive Officer (Representative Executive Officer) Jiro Araumi	Director (External) Takashi Yoshida* ¹	Executive Officer* ² Toru Takakura	Executive Officer* ² Takuji Marui
Director, Senior Managing Executive Officer (Representative Executive Officer) Yutaka Nishida	Director (External) Hiroko Kawamoto* ¹	Executive Officer* ² Kengo Noguchi	Executive Officer* ² Satoshi Kitai
Director, Executive Officer Masaru Hashimoto	Director (External) Mitsuhiro Aso* ¹	Executive Officer* ² Seiji Iwakuma	Executive Officer* ² Masaya Noda
Director Kunitaro Kitamura	Senior Managing Executive Officer, Executive Officer* ² Atsushi Kaibara	Executive Officer* ² Shigeki Tanaka	Executive Officer* ² Atsushi Matsumoto
Director Hitoshi Tsunekage	Managing Executive Officer Hitoshi Sato	Executive Officer* ² Akira Yokota	Executive Officer* ² Nobuhisa Takahashi
Director Kuniyuki Shudo	Managing Executive Officer, Executive Officer* ² Futoshi Itani	Executive Officer* ² Toshio Masui	Executive Officer* ² Yasuyuki Suzuki
Director Kouji Tanaka	Managing Executive Officer Kazuya Oyama	Executive Officer* ² Yoshio Hishida	Executive Officer* ² Shinichi Nonomura
Director (External) Takeshi Suzuki* ¹	Managing Executive Officer Junya Ueda	Executive Officer* ² Yoshinori Momose	Executive Officer* ² Manatomo Yoneyama
Director (External) Mikio Araki* ¹	Executive Officer, Executive Officer* ² Shigenori Ikemura	Executive Officer* ² Nobuaki Yamaguchi	Executive Officer* ² Kazuteru Wakao
Director (External) Isao Matsushita* ¹	Executive Officer* ² Yukihiro Kitano	Executive Officer* ² Daisuke Maeda	

*1 External Directors as provided for in Article 2, Item 15 of the Companies Act.

*2 Executive Officers as defined in our internal policy; unless otherwise annotated, Executive Officers are defined in the Companies Act.

Employees (As of March 31, 2020)

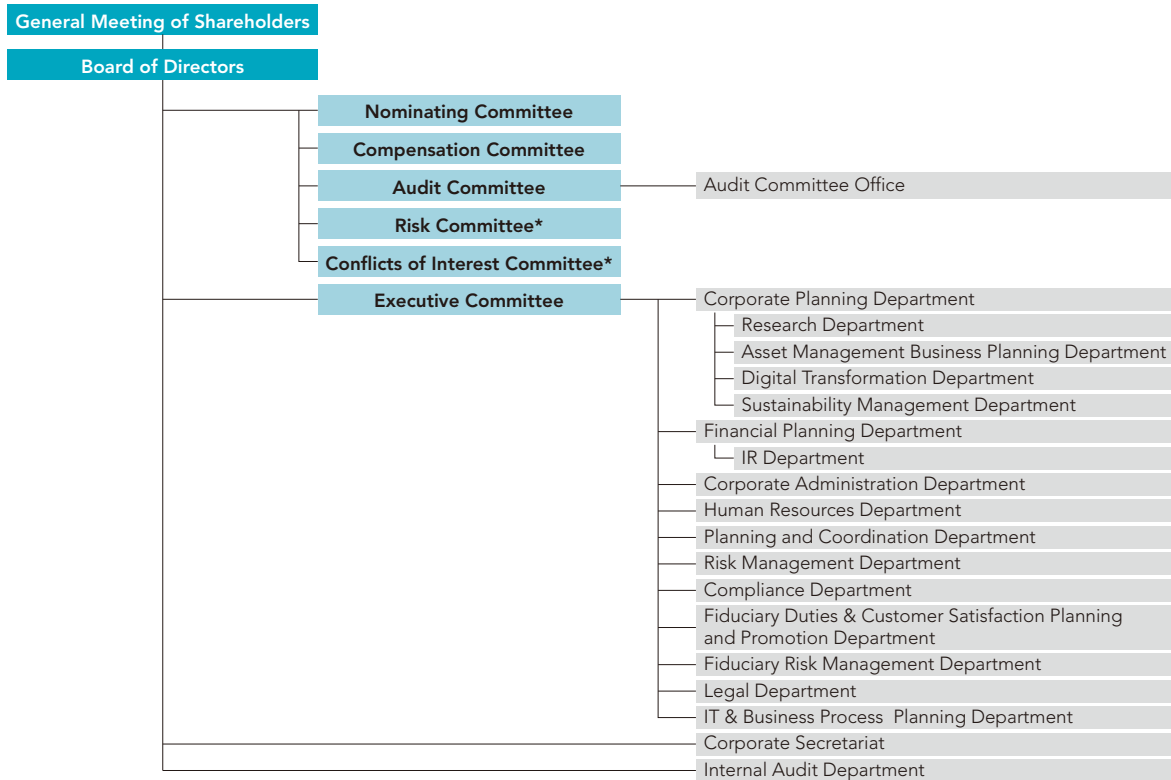
Category	March 31, 2020	March 31, 2019
Number of Employees	169	146
Average Age	51 years, 4 months	50 years, 1 month
Average Length of Employment	23 years, 1 month	23 years, 2 months
Average Annual Salary	¥12,013 thousand	¥13,037 thousand

Notes: 1. The number of employees indicates total personnel, etc., excluding employees seconded to other companies and temporary and part-time staff.

2. Employees include those seconded from SuMi TRUST Bank and the average length of employment includes years of employment at their own companies.

3. Average annual salary includes bonus and extra payment.

Organizational Chart (As of June 30, 2020)



*Risk Committee and Conflicts of Interest Committee are Voluntary committees.

Subsidiaries and Affiliated Companies (As of June 30, 2020)

Japan

Name	Location	Date of Establishment	Paid-in Capital (Millions)	Scope of Business	Ownership by SuMi TRUST Holdings (%)	Ownership by subsidiaries (%)
Sumitomo Mitsui Trust Bank, Limited	4-1, Marunouchi 1-chome, Chiyoda-ku, Tokyo	July 28, 1925	¥ 342,037	Trust and Banking Business	100.0	—
Sumitomo Mitsui Trust Asset Management Co., Ltd.	1-1, Shibakoen 1-chome, Minato-ku, Tokyo	November 1, 1986	¥ 2,000	Investment Management Business, Investment Advisory and Agency Business	100.0	—
Sumitomo Mitsui Trust Research Institute Co., Ltd.	33-1, Shiba 3-chome, Minato-ku, Tokyo	July 1, 1988	¥ 300	Survey, Research, Consulting, Investment Advisory Business	100.0	—
Nikko Asset Management Co., Ltd.	7-1, Akasaka 9-chome, Minato-ku, Tokyo	December 1, 1959	¥ 17,363	Investment Management Business, Investment Advisory and Agency Business	92.2	—
Mutual Fund & Insurance Research Institute	33-1, Shiba 3-chome, Minato-ku, Tokyo	December 1, 2017	¥ 150	Survey, Research, Consulting	88.0	—
UBS SuMi TRUST Wealth Advisory, Ltd.	4-1, Marunouchi 1-chome, Chiyoda-ku, Tokyo	September 25, 2019	¥ 5	Concurrent sales agency services, Financial instruments intermediary services	50.0	—
JTC Holdings, Ltd.	8-11, Harumi 1-chome, Chuo-ku, Tokyo	October 1, 2018	¥ 500	Holding Company of Trust Banks Specializing in Asset Administration Services	33.3	—
Japan Trustee Services Bank, Ltd.	8-11, Harumi 1-chome, Chuo-ku, Tokyo	June 20, 2000	¥ 51,000	Trust and Banking Business	—	100.0
Trust & Custody Services Bank, Ltd.	8-12, Harumi 1-chome, Chuo-ku, Tokyo	January 22, 2001	¥ 50,000	Trust and Banking Business	—	100.0

* For details concerning subsidiaries and affiliated companies of SuMi TRUST Bank, please refer to page 13.