

Board of Directors and Executive Officers (As of July 1, 2020)

Chairman (Co-chairman) Kunitaro Kitamura	Senior Managing Executive Officer Naohiro Tanaka	Managing Executive Officer Daisuke Maeda	Executive Officer Kazuhiko Kasuya
Chairman (Co-chairman) Hitoshi Tsunekage	Senior Managing Executive Officer Seiji Iwakuma	Managing Executive Officer Junya Ueda	Executive Officer Takehiko Iwahara
President (Representative Director) Masaru Hashimoto	Senior Managing Executive Officer Shigeki Tanaka	Executive Officer Shigeki Moriki	Executive Officer Takafumi Arimura
Deputy President (Representative Director) Yukihiko Kitano	Managing Executive Officer Hitoshi Sato	Executive Officer Teruki Ido	Executive Officer Kouichi Kato
Deputy President (Representative Director) Tsuyoshi Saito	Managing Executive Officer Akira Yokota	Executive Officer Yuki Takada	Executive Officer Shinichi Tao
Director, Senior Managing Executive Officer Yutaka Nishida	Managing Executive Officer Toshio Masui	Executive Officer Miyo Yajima	Executive Officer Masakatsu Sato
Director, Senior Managing Executive Officer Jiro Araumi	Managing Executive Officer Kouji Koyanagi	Executive Officer Yasuo Hanashita	Executive Officer Manatomo Yoneyama
Director, Senior Managing Executive Officer Toru Takakura	Managing Executive Officer Toshiya Shimobeyu	Executive Officer Atsushi Ueda	Executive Officer Takehiko Sakaue
Director, Senior Managing Executive Officer Masahiro Tsuchiya	Managing Executive Officer Futoshi Itani	Executive Officer Toshiaki Nakano	Executive Officer Kazuteru Wakao
Director, Senior Managing Executive Officer Atsushi Kaibara	Managing Executive Officer Kenji Kaiya	Executive Officer Takuji Marui	Executive Officer Makito Oono
Director, Senior Managing Executive Officer Kengo Noguchi	Managing Executive Officer Keiichi Hamano	Executive Officer Satoshi Kitai	Executive Officer Katsuji Oka
Director, Managing Executive Officer Kazuya Oyama	Managing Executive Officer Yutaka Fujisawa	Executive Officer Masaya Noda	Executive Officer Toru Nakagawa
Director Tetsuo Ohkubo	Managing Executive Officer Yoshinori Momose	Executive Officer Hitoshi Kotaka	Executive Officer Iwao Nakamura
Director (External) Hideki Kanda*	Managing Executive Officer Hideshi Sano	Executive Officer Tetsuya Hiwatashi	Executive Officer Masatoshi Yoshikawa
Director (External) Junko Sasaki*	Managing Executive Officer Yasunaga Matsumoto	Executive Officer Atsushi Matsumoto	Executive Officer Hidehiro Miyahara
Director (Audit and Supervisory Committee member) Kazuhisa Koashi	Managing Executive Officer Nobuaki Yamaguchi	Executive Officer Takumi Fujisawa	Executive Officer Junichiro Usui
Director (Audit and Supervisory Committee member) Tsutomu Kurai	Managing Executive Officer Ryouji Nishimoto	Executive Officer Nobuhisa Takahashi	Executive Officer Riro Sato
Director (Audit and Supervisory Committee member) (External) Hiroshi Mitsunaga*	Managing Executive Officer Masahiko Kitajima	Executive Officer Yasuyuki Suzuki	Executive Officer Kenji Amihama
Director (Audit and Supervisory Committee member) (External) Hiroya Nakakubo*	Managing Executive Officer Takashi Kameda	Executive Officer Shinichi Nonomura	
Director (Audit and Supervisory Committee member) (External) Kaoru Kashima*			

* External Directors as provided for in Article 2, Item 15 of the Companies Act.
Executive Officers as defined in our internal policy.

Employees (As of March 31, 2020)

Category	March 31, 2020	March 31, 2019
Number of Employees	13,527	13,469
Average Age	41 years, 5 months	42 years, 5 months
Average Length of Employment	14 years, 1 month	13 years, 5 months
Average Annual Salary	¥7,349 thousand	¥7,198 thousand

Notes: 1. The number of employees indicates total personnel, etc., excluding employees seconded to other companies and temporary and part-time staff.
 2. Average annual salary includes bonus and extra payment.

Organizational Chart (As of June 30, 2020)

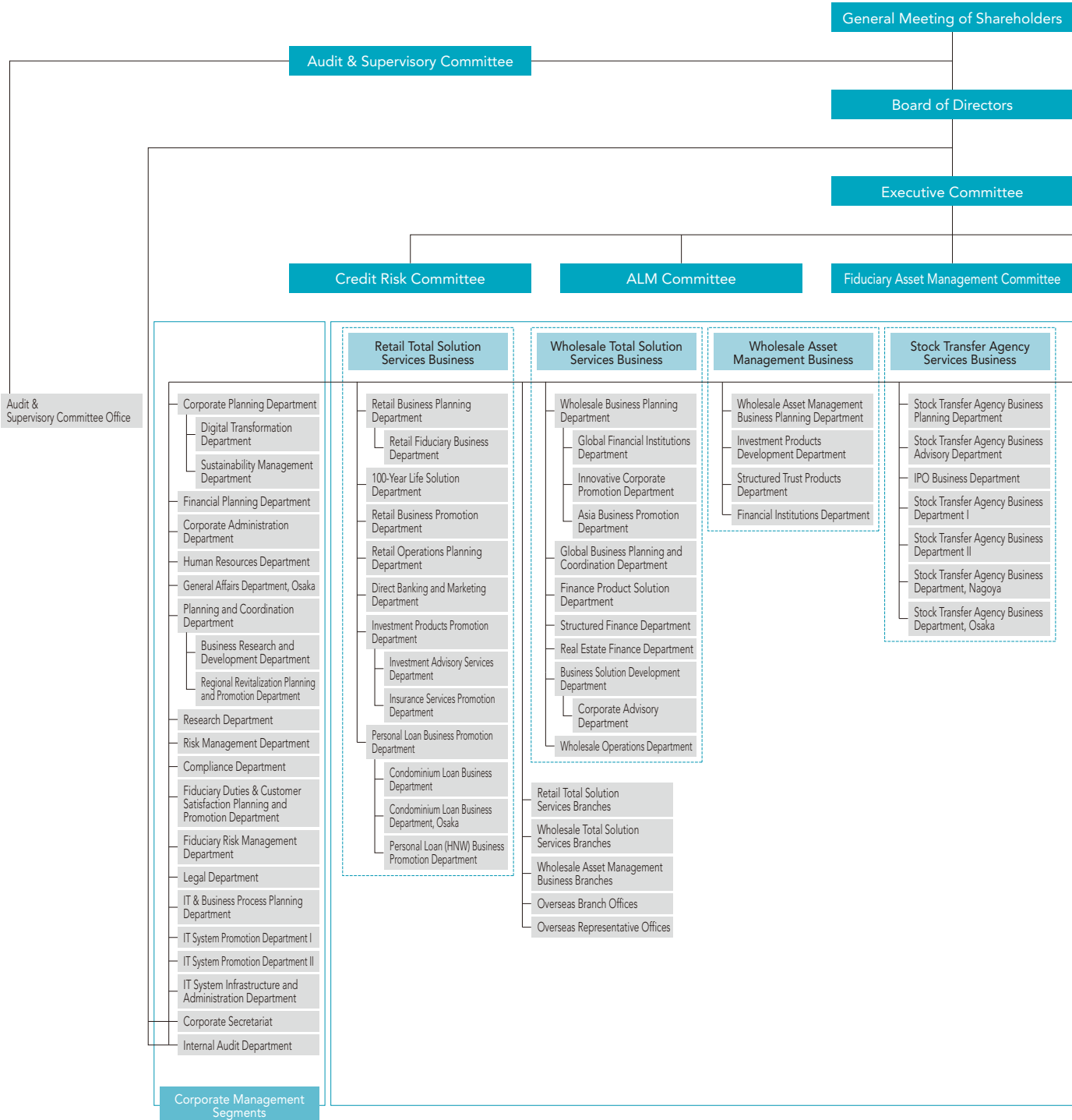
Corporate Data

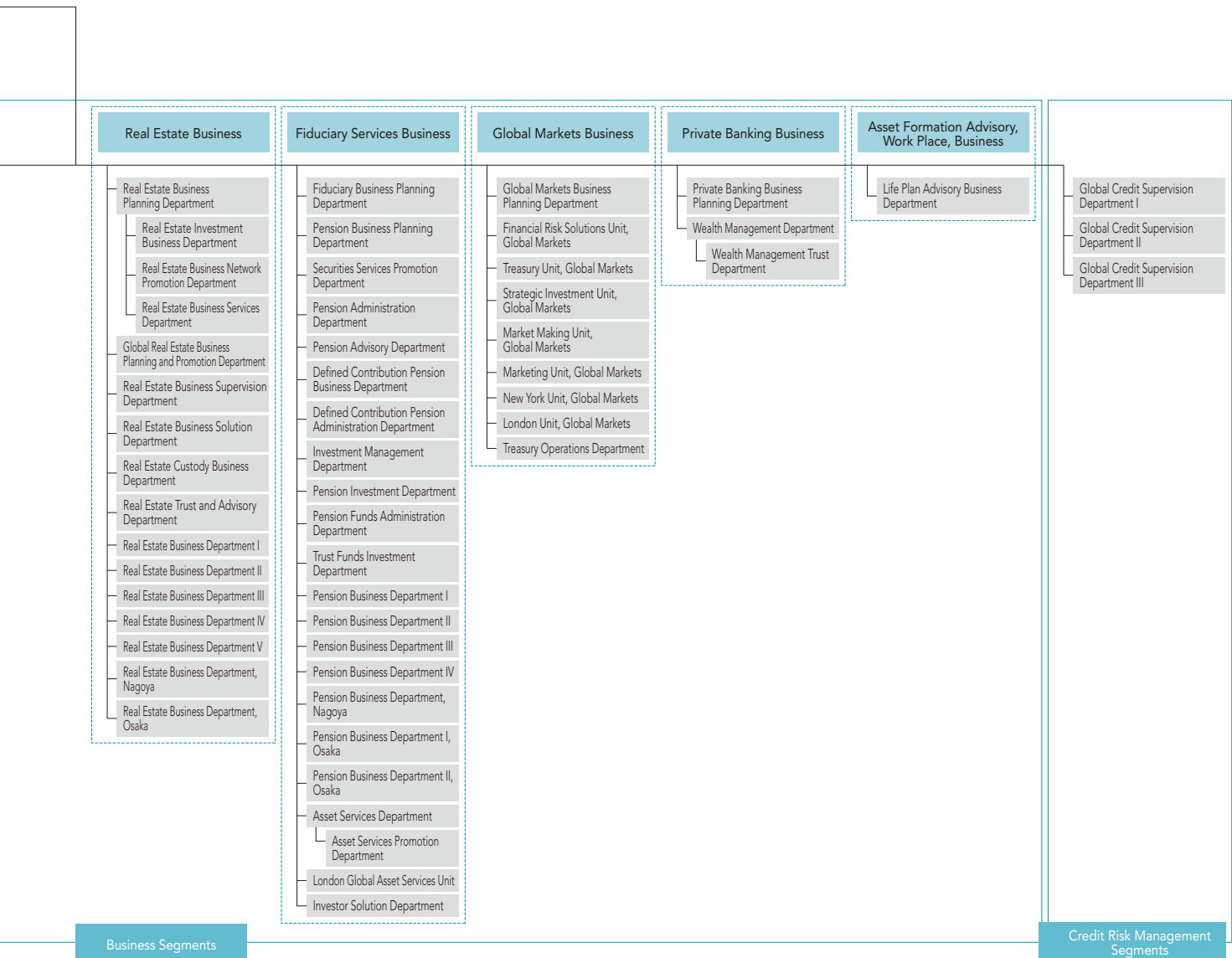
Financial Data/
Sumitomo Mitsui Trust Holdings, Inc.

Financial Data/
Sumitomo Mitsui Trust Bank, Limited

Base I/II Disclosure Data/
Sumitomo Mitsui Trust Holdings, Inc.

Base I/II Disclosure Data/
Sumitomo Mitsui Trust Bank, Limited





Branches (As of June 30, 2020)

... These branches house two sales outlets under one roof, a "branch-in-a-branch" method.

Hokkaido, Tohoku

Sapporo Branch
Sapporo-Chuo Branch
1, Kita 2-jo Nishi 4-chome, Chuo-ku, Sapporo,
Hokkaido 060-0002, Japan

Sendai Branch
Sendai-Aoba Branch
1-7, Chuo 2-chome, Aoba-ku, Sendai,
Miyagi 980-0021, Japan

Tokyo

Tokyo Business Department
4-1, Marunouchi 1-chome, Chiyoda-ku,
Tokyo 100-8233, Japan

Nihonbashi Business Department
Tokyo-Chuo Branch
1-1, Nihonbashi-muromachi 2-chome, Chuo-ku,
Tokyo 103-0022, Japan

Consulting Plaza Shinbashi
**(Shinbashi Sub-Branch,
Tokyo Business Department)**
20-1, Shinbashi 2-chome, Minato-ku,
Tokyo 105-0004, Japan

Toranomon Consulting Office
**(Toranomon Sub-Branch,
Tokyo Business Department)**
7-1, Nishi Shinbashi 1-chome, Minato-ku,
Tokyo 105-0003, Japan

Shiba Business Department
33-1, Shiba 3-chome, Minato-ku, Tokyo 105-8574, Japan

Shinjuku-Nishiguchi Branch
1-4, Nishi Shinjuku 1-chome, Shinjuku-ku,
Tokyo 160-0023, Japan

Shinjuku Branch
26-11, Shinjuku 3-chome, Shinjuku-ku, Tokyo 160-0022, Japan

Ueno Branch
Ueno-Chuo Branch
19-10, Ueno 1-chome, Taïto-ku, Tokyo 110-0005, Japan

Meguro Branch
25-5, Kamioosaki 2-chome, Shinagawa-ku,
Tokyo 141-0021, Japan

Omori Branch
1-1, Sannou 2-chome, Ota-ku, Tokyo 143-0023, Japan

Sangenjaya Branch
1-1, Taishido 4-chome, Setagaya-ku, Tokyo 154-0004, Japan

Futako-Tamagawa Branch
22-12, Tamagawa 2-chome, Setagaya-ku,
Tokyo 158-0094, Japan

Consulting Plaza Seijo
**(Seijo Sub-Branch,
Shinjuku-Nishiguchi Branch)**
5-34, Seijo 6-chome, Setagaya-ku,
Tokyo 157-0066, Japan

Consulting Plaza Chofu
**(Chofu Sub-Branch,
Shinjuku-Nishiguchi Branch)**
48-26, Kojimacho 2-chome, Chofu,
Tokyo 182-0026, Japan

Shibuya Branch
Shibuya-Chuo Branch
2-3, Dogenzaka 1-chome, Shibuya-ku,
Tokyo 150-0043, Japan

**Shibuya Square A Building Sub-branch of
Shibuya Branch**
**Shibuya Square A Building Sub-branch of
Shibuya Central Branch**
9-5, Dogenzaka 1-chome, Shibuya-ku,
Tokyo 150-0043, Japan

Jiyugaoka Branch
10-20, Jiyugaoka 2-chome, Meguro-ku,
Tokyo 152-0035, Japan

Nakano Branch
62-5, Nakano 5-chome, Nakano-ku,
Tokyo 164-0001, Japan

Ogikubo Branch
18-10, Kamiogi 1-chome, Sugiyama-ku,
Tokyo 167-0043, Japan

Ikebukuro Branch
Ikebukuro-Higashiguchi Branch
41-7, Higashi Ikebukuro 1-chome, Toshima-ku,
Tokyo 170-0013, Japan

Shakujii Branch
14-1, Shakujii-cho 2-chome, Nerima-ku,
Tokyo 177-0041, Japan

Kichijoji Branch
14-9, Kichijoji Hon-cho 1-chome, Musashino,
Tokyo 180-0004, Japan

Kichijoji-Chuo Branch
2-14, Kichijoji Hon-cho 2-chome, Musashino,
Tokyo 180-0004, Japan

Koganei Branch
10-1, Hon-cho 5-chome, Koganei, Tokyo 184-0004, Japan

Tachikawa Branch
Tachikawa-Kitaguchi Branch
6-1, Akebono-cho 2-chome, Tachikawa,
Tokyo 190-0012, Japan

Hachioji Branch
Hachioji-Ekimae Branch
9-1, Asahi-cho, Hachioji, Tokyo 192-0083, Japan

Machida Branch
3-4, Haramachida 6-chome, Machida,
Tokyo 194-0013, Japan

Tama-Sakuragaoka Branch
1-5, Sekido 1-chome, Tama, Tokyo 206-0011, Japan

Consulting Plaza Seiseki
**(Seiseki-Sakuragaoka Sub-Branch,
Tama-Sakuragaoka Branch)**
7-5, Sekido 1-chome, Tama, Tokyo 206-0011, Japan

Consulting Plaza Tama-Center
**(Tama-Center Sub-Branch,
Tama-Sakuragaoka Branch)**
44, Ochiai 1-chome, Tama, Tokyo 206-0033, Japan

Kanto

Urawa Branch

12-1, Takasago 1-chome, Urawa-ku,
Saitama 330-0063, Japan

Omiya Branch

Omiya-Ekimae Branch

32, Daimon-cho 1-chome, Omiya-ku,
Saitama 330-8511, Japan

Tokorozawa Branch

Tokorozawa-Ekimae Branch

3-5, Hiyoshi-cho, Tokorozawa, Saitama 359-8691, Japan

Koshigaya Branch

14-22, Yayoi-cho, Koshigaya, Saitama 343-0816, Japan

Sugito Branch

13-12, Sugito 2-chome, Sugito-machi, Kitakatsushika-gun,
Saitama 345-0036, Japan

Chiba Branch

Chiba-Ekimae Branch

1-16, Fujimi 1-chome, Chuo-ku, Chiba 260-0015, Japan

Ichikawa Branch

7-13, Ichikawa 1-chome, Ichikawa, Chiba 272-0034, Japan

Funabashi Branch

3-1, Hon-cho 1-chome, Funabashi, Chiba 273-0005, Japan

Tsudanuma Branch

14-5, Maebara Nishi 2-chome, Funabashi,
Chiba 274-0825, Japan

Matsudo Branch

2-1, Hon-cho, Matsudo, Chiba 271-0091, Japan

Kashiwa Branch

1-2, Asahi-cho 1-chome, Kashiwa, Chiba 277-0852, Japan

Yachiyo Branch

3-1, Yachiyodai Minami 1-chome, Yachiyo,
Chiba 276-0033, Japan

Yokohamaeki-Nishiguchi Branch

Yokohama Branch

6-31, Minami Saiwai 1-chome, Nishi-ku, Yokohama, Kanagawa
220-0005, Japan

Yokohama Housing Loan Center Sub-Branch, Yokohamaeki-Nishiguchi Branch

6-1, Kita Saiwai 1-chome, Nishi-ku, Yokohama, Kanagawa
220-0004, Japan

Futamatagawa Branch

3-2, Futamatagawa 1-chome, Asahi-ku, Yokohama, Kanagawa
241-0821, Japan

Tama-Plaza Branch

15-8, Utsukushigaoka 2-chome, Aoba-ku, Yokohama,
Kanagawa 225-0002, Japan

Aobadai Branch

9-2, Aobadai 2-chome, Aoba-ku, Yokohama, Kanagawa
227-0062, Japan

Consulting Plaza Kohoku

(Kohoku Sub-Branch, Tama-Plaza Branch)

1-3, Nakagawa Chuo 1-chome, Tsuzuki-ku, Yokohama,
Kanagawa 224-0003, Japan

Konandai Branch

15-2-102, Konandai 3-chome, Konan-ku, Yokohama, Kanagawa
234-0054, Japan

Kamiooka Branch

18-5, Kamiooka Nishi 1-chome, Konan-ku, Yokohama,
Kanagawa 233-0002, Japan

Consulting Plaza Totsuka

(Totsuka Sub-Branch, Yokohamaeki-Nishiguchi Branch)

16-1, Totsuka-cho, Totsuka-ku, Yokohama,
Kanagawa 244-0003, Japan

Kawasaki Branch

3-1, Ekimae Hon-cho, Kawasaki-ku, Kawasaki,
Kanagawa 210-0007, Japan

Shin-Yurigaoka Branch

5-3, Kamiasao 1-chome, Asao-ku, Kawasaki,
Kanagawa 215-0021, Japan

Yokosuka Branch

3, Odaki-cho 2-chome, Yokosuka,
Kanagawa 238-0008, Japan

Fujisawa Branch

Fujisawa-Chuo Branch

21-1-101, Minami Fujisawa, Fujisawa,
Kanagawa 251-0055, Japan

Sagami-Ono Branch

13-7, Sagamiono 3-chome, Minami-ku, Sagami-hara,
Kanagawa 252-0303, Japan

Atsugi Branch

5-14, Naka-cho 3-chome, Atsugi,
Kanagawa 243-0018, Japan

Odawara Branch

2-12, Sakae-cho 1-chome, Odawara,
Kanagawa 250-0011, Japan

Utsunomiya Branch

4-12, Hon-cho, Utsunomiya, Tochigi 320-0033, Japan

Maebashi Branch

2-12, Hon-machi 2-chome, Maebashi,
Gunma 371-0023, Japan

Koshinetsu, Hokuriku

Kofu Branch

17-14, Marunouchi 1-chome, Kofu,
Yamanashi 400-0031, Japan

Niigata Branch Niigata-Chuo Branch

1178-1, Kamiokawa-maedori Rokuban-cho, Chuo-ku,
Niigata 951-8068, Japan

Toyama Branch

1-36, Sakura-machi 1-chome, Toyama 930-0003, Japan

Kanazawa Branch Kanazawa-Chuo Branch

1-18, Kami Tsutsumi-cho, Kanazawa,
Ishikawa 920-0869, Japan

Fukui Branch

7-1, Chuo 1-chome, Fukui 910-0006, Japan

Tokai

Nagoya Business Department Nagoya-Sakae Branch

15-33, Sakae 3-chome, Naka-ku, Nagoya,
Aichi 460-0008, Japan

Kanayamabashi Branch

14-9, Kanayama 1-chome, Naka-ku, Nagoya,
Aichi 460-0022, Japan

Nagoya-Ekimae Branch

26-8, Meieki 3-chome, Nakamura-ku, Nagoya,
Aichi 450-0002, Japan

Meieki-Minami Branch

24-30, Meieki Minami 1-chome, Nakamura-ku, Nagoya,
Aichi 450-0003, Japan

Hoshigaoka Branch

106, Inoue cho, Chikusa-ku, Nagoya,
Aichi 464-0026, Japan

Ichinomiya Branch

7-15, Sakae 3-chome, Ichinomiya, Aichi 491-0858, Japan

Okazaki Branch

16, Koseidori-Nishi 3-chome, Okazaki,
Aichi 444-0059, Japan

Toyohashi Branch

135, Ekimaeodori 1-chome, Toyohashi,
Aichi 440-0888, Japan

Shizuoka Branch Shizuoka-Chuo Branch

3-10, Koya-machi, Aoi-ku, Shizuoka 420-0852, Japan

Numazu Branch

4-2, Ote-machi 5-chome, Numazu, Shizuoka 410-0801, Japan

Gifu Branch

3, Nagazumi-cho 2-chome, Gifu 500-8175, Japan

Yokkaichi Branch

5-4, Suwa-cho, Yokkaichi, Mie 510-8650, Japan

Kinki

Osaka Business Department Osaka-Chuo Branch

5-33, Kitahama 4-chome, Chuo-ku, Osaka 540-8639, Japan

Umeda Branch Hankyu-Umeda Branch

8-47, Kakuda-cho, Kita-ku, Osaka 530-0017, Japan

Namba Branch Namba-Chuo Branch

1-60, Namba 5-chome, Chuo-ku, Osaka 542-0076, Japan

Namba Housing Loan Center Sub-Branch, Namba Branch

10-70, Namba-naka 2-chome, Naniwa-ku,
Osaka 556-0011, Japan

Abenobashi Branch Abeno Branch

6-1, Abenosuji 1-chome, Abeno-ku, Osaka 545-0052, Japan

Sakai Branch

59-2, Mikunigaoka Miyuki-dori, Sakai-ku, Sakai,
Osaka 590-0028, Japan

Consulting Plaza Izumigaoka (Senboku Sub-Branch, Sakai Branch)

2-1, Chayamadai 1-chome, Minami-ku, Sakai,
Osaka 590-0115, Japan

Yao Branch

6-8, Higashi Hon-machi 3-chome, Yao,
Osaka 581-0004, Japan

Hirakata Branch Keihan-Hirakata Branch

13-20, Oka Higashi-cho, Hirakata, Osaka 573-0032, Japan

Takatsuki Branch

5-20, Konya-machi, Takatsuki, Osaka 569-0804, Japan

Ibaraki Branch

2-30, Futaba-cho, Ibaraki, Osaka 567-0829, Japan

Toyonaka Branch

1-1, Hon-machi 1-chome, Toyonaka, Osaka 560-0021, Japan

Senri-Chuo Branch

1-3, Shinsenri Higashi-machi 1-chome, Toyonaka,
Osaka 560-0082, Japan

Ikeda Branch

1-1-134, Kureha-cho, Ikeda, Osaka 563-0048, Japan

Chugoku, Shikoku

Kobe Branch Kobe-Sannomiya Branch

1-6, Goko-dori 8-chome, Chuo-ku,
Kobe, Hyogo 651-0087, Japan

Consulting Plaza Seishin-Chuo (Seishin-Chuo Sub-Branch, Kobe Branch)

9-4, Kojidai 5-chome, Nishi-ku, Kobe,
Hyogo 651-2273, Japan

Tsukaguchi Branch

15-1, Tsukaguchi-cho 1-chome, Amagasaki,
Hyogo 661-0002, Japan

Nishinomiya Branch

5-39, Takamatsu-cho, Nishinomiya, Hyogo 663-8204, Japan

Ashiya Branch

5-2, Funado-cho, Ashiya, Hyogo 659-0093, Japan

Kawanishi Branch

7-18, Chuo-cho, Kawanishi, Hyogo 666-0016, Japan

Akashi Branch

5-28, Higashinakano-machi, Akashi, Hyogo 673-0886, Japan

Himeji Branch

252, Ekimae-cho, Himeji, Hyogo 670-0927, Japan

Kyoto Branch Kyoto-Shijo Branch

612, Karasuma-dori Shijo-sagaru Suiginya-cho,
Shimogyo-ku, Kyoto 600-8411, Japan

Otsu Branch

3-10, Umebayashi 1-chome, Otsu, Shiga 520-0051, Japan

Nara-Saidaiji Branch

1-50, Saidaiji Higashi-machi 2-chome,
Nara 631-0821, Japan

Consulting Plaza Gakuenmae (Gakuenmae Sub-Branch, Nara-Saidaiji Branch)

8-11, Gakuen Kita 1-chome, Nara 631-0036, Japan

Wakayama Branch

3-17, Higashi Kuramae-cho, Wakayama 640-8203, Japan

Tottori Branch

103, Ima-machi 1-chome, Tottori 680-0822, Japan

Okayama Branch Okayama-Chuo Branch

1-5, Ekimoto-machi, Kita-ku, Okayama 700-0024, Japan

Okayama-Ekimae Sub-Branch, Okayama Branch

Okayama-Ekimae Sub-Branch,

Okayama-Chuo Branch

1-6, Ekimoto-machi, Kita-ku, Okayama 700-0024, Japan

Hiroshima Branch

Hiroshima-Chuo Branch

2-22, Kamiya-cho 1-chome, Naka-ku,
Hiroshima 730-0031, Japan

Fukuyama Branch

15-1, Moto-machi, Fukuyama, Hiroshima 720-0063, Japan

Yamaguchi-Hofu Branch

4-24, Ebisu-machi 1-chome, Hofu,
Yamaguchi 747-0036, Japan

Takamatsu Branch

9-4, Konya-machi, Takamatsu, Kagawa 760-0027, Japan

Matsuyama Branch

11-1, Sanban-cho 4-chome, Matsuyama,
Ehime 790-0003, Japan

Kyushu

Fukuoka Branch Fukuoka-Tenjin Branch

12-1, Tenjin 2-chome, Chuo-ku, Fukuoka 810-0001, Japan

Kita-Kyushu Branch

1-5, Kaji-machi 1-chome, Kokurakita-ku, Kita-Kyushu, Fukuoka
802-0004, Japan

Saga Branch

3-2, Matsubara 1-chome, Saga 840-0831, Japan

Kumamoto Branch Kumamoto-Chuo Branch

2-5, Tetori Hon-cho, Chuo-ku, Kumamoto 860-0808, Japan

Oita Branch

3-23, Chuo-machi 1-chome, Oita 870-0035, Japan

Kagoshima Branch

7-8-101, Kinsei-cho, Kagoshima 892-0828, Japan

Overseas Network

Branch

New York Branch

1251 Avenue of the Americas, New York, NY 10020, U.S.A.

London Branch

155 Bishopsgate, London EC2M 3XU, U.K.

Singapore Branch

One Raffles Quay, #24-01 North Tower, Singapore 048583

Shanghai Branch

50F Jin Mao Tower, 88 Shiji Dadao Pudong New Area,
Shanghai 200121, People's Republic of China

Hong Kong Branch

25/F, AIA Central, 1 Connaught Road, Central, Hong Kong

Representative Office

Beijing Representative Office (Banking business)

Room 7009, 7th Floor, Chang Fu Gong Office Building,
No. 26, Jianguomenwai Dajie, Chaoyang District,
Beijing 100022, People's Republic of China

Beijing Representative Office (Securities business)

Room 5011, 5th Floor, Chang Fu Gong Office Building,
No. 26, Jianguomenwai Dajie, Chaoyang District,
Beijing 100022, People's Republic of China

Jakarta Representative Office

20th Floor, Summitmas I,
Jl. Jend. Sudirman, Kaveling 61-62,
Jakarta 12190, Indonesia

Seoul Representative Office

20th Floor, Booyoung Taepyoung Building, 55,
Sejong-daero, Jung-gu, Seoul 04513, Korea

Sydney Representative Office

Suite 3, Level 39, 259 George Street,
Sydney NSW 2000, Australia

Number of Contracted Trust Agencies* (As of March 31, 2020)

*Trust Agency is a collective term that refers to trust contract agencies under the Trust Business Act as well as agencies concurrently engaged in trust business under Article 1 of the Act on Provision, etc. of Trust Business by Financial Institutions.

Type	Number of Agencies					
	Trust Contract Agencies	Agencies Engaged in Concurrent Business				
		Stock Transfer Agency Service	Service Related to Wills	Solicitation for National Pension Fund	Discretionary Investment Business	
Banks, Shinkin Banks, etc.	109	68	44	73	52	1
Regional Banks	43	39	31	31	18	1
Second Regional Banks	17	13	7	12	10	—
Shinkin Central Bank, Shinkin Banks	37	13	3	21	24	—
Credit Union	8	—	—	8	—	—
Shoko Chukin Bank	1	1	—	—	—	—
City Banks, etc.	3	2	3	1	—	—
Securities Firms	8	2	4	8	—	—
Life Insurers and Business Enterprises	15	1	1	15	—	—
Total	132	71	49	96	52	1

Bank Service Agency (As of March 31, 2020)

Trade Name of Bank Service Agency	SBI Sumishin Net Bank, Ltd.
Business Offices, etc. Operating Bank Agency Service	Head Office, East Japan Operation Center, West Japan Operation Center, Ichigo Branch, Budou Branch, Mikan Branch, Lemon Branch, Ringo Branch, Banana Branch, Melon Branch, Kiwi Branch (11 Branches)

Subsidiaries and Affiliated Companies (As of June 30, 2020)

Japan

Name	Location	Date of Establishment	Paid-in Capital (Millions)	Scope of Business	Ownership by SuMi TRUST Bank (%)	Ownership by subsidiaries (%)
Tokyo Securities Transfer Agent Co., Ltd.	11, Kanda-nishikicho 3-chome, Chiyoda-ku, Tokyo	November 1, 1962	¥ 50	Stock Transfer Agency Services	100.0	—
Sumitomo Mitsui Trust Club Co., Ltd.	8-10, Harumi 1-chome, Chuo-ku, Tokyo	April 2, 1977	¥ 100	Credit Card Business	100.0	—
Sumitomo Mitsui Trust Guarantee Co., Ltd.	33-1, Shiba 3-chome, Minato-ku, Tokyo	July 10, 1978	¥ 301	Housing Loan Guaranty Business	100.0	—
Sumitomo Mitsui Trust General Service Co., Ltd.	33-1, Shiba 3-chome, Minato-ku, Tokyo	April 2, 1988	¥ 100	Property Leasing and Management Business	100.0	—
Sumitomo Mitsui Trust Wealth Partners Co., Ltd.	33-1, Shiba 3-chome, Minato-ku, Tokyo	November 6, 1989	¥ 155	Consulting Business	100.0	—
Sumitomo Mitsui Trust Business Service Co., Ltd.	33-1, Shiba 3-chome, Minato-ku, Tokyo	May 24, 1990	¥ 100	Back Office Services, Temporary Staffing Business, Outplacement Agency	100.0	—
Sumitomo Mitsui Trust Loan & Finance Co., Ltd.	20-1, Shinbashi 2-chome, Minato-ku, Tokyo	January 22, 1992	¥ 6,000	Money Lending Business	100.0	—
Sumitomo Mitsui Trust TA Solution Co., Ltd.	8-4, Izumi 2-chome, Suginami-ku, Tokyo	July 1, 1998	¥ 2,005	IT, Calculation Outsourcing Business	100.0	—
J-Eurus IR Co., Ltd.	3-1, Marunouchi 3-chome, Chiyoda-ku, Tokyo	December 27, 2000	¥ 10	Counseling Business	100.0	—
Sumitomo Mitsui Trust Real Estate Investment Management Co., Ltd.	11-1, Kanda-nishikicho 3-chome, Chiyoda-ku, Tokyo	November 7, 2005	¥ 300	Investment Management, Investment Advisory	100.0	—
Sumitomo Mitsui Trust Career Partners Co., Ltd.	33-1, Shiba 3-chome, Minato-ku, Tokyo	April 3, 2006	¥ 100	Training Programs, Personnel-related Services	100.0	—
Sumitomo Mitsui Trust Life Partners Co., Ltd.	11-1, Kanda-nishikicho 3-chome, Chiyoda-ku, Tokyo	January 28, 2019	¥ 100	Insurance Agency Business	100.0	—
Japan Securities Agents, Ltd.	2-4, Nihonbashi-kayabacho 1-chome, Chuo-ku, Tokyo	September 13, 1950	¥ 500	Stock Transfer Agency Services	85.1	—
Sumitomo Mitsui Trust Panasonic Finance Co., Ltd.	2-3, Shibaura 1-chome, Minato-ku, Tokyo	February 27, 1967	¥ 25,584	General Leasing, Installment Purchase Services, Credit Card Business	84.8	—
Sumishin Guaranty Company Limited	33-1, Shiba 3-chome, Minato-ku, Tokyo	August 25, 1977	¥ 300	Loan Guaranty Business	—	100.0
Sumitomo Mitsui Trust Card Co., Ltd.	33-1, Shiba 3-chome, Minato-ku, Tokyo	June 24, 1983	¥ 100	Credit Card Business	50.0	50.0
Sumitomo Mitsui Trust Systems & Services Co., Ltd.	1-10, Nikko-cho, Fuchu, Tokyo	February 12, 1973	¥ 100	System Development and Operation Management Services	44.4	55.6
Sumitomo Mitsui Trust Investment Co., Ltd.	33-1, Shiba 3-chome, Minato-ku, Tokyo	March 22, 2000	¥ 100	Equity Investment Business	40.0	60.0
Sumitomo Mitsui Trust Realty Co., Ltd.	11-1, Kanda-nishikicho 3-chome, Chiyoda-ku, Tokyo	January 24, 1986	¥ 300	Real Estate Brokerage Business	4.7	95.3
SBI Sumishin Net Bank, Ltd.	6-1, Roppongi 1-chome, Minato-ku, Tokyo	June 3, 1986	¥ 31,000	Banking Business	50.0	—
Japan Pension Operation Service, Ltd.	24-1, Nihonbashi-hakozakicho, Chuo-ku, Tokyo	December 21, 2004	¥ 100	Calculation of Pension Payments, etc., Clerical Outsourcing Business	50.0	—
Japan Stockholders Data Service Company, Limited	8-4, Izumi 2-chome, Suginami-ku, Tokyo	April 1, 2008	¥ 2,000	Stock Transfer Outsourcing Business	50.0	—
Trust Capital Mezzanine LLC	5-1, Nihonbashi-muromachi 4-chome, Chuo-ku, Tokyo	January 21, 2020	¥ 60	Equity Investment Business	45.0	—
Sumishin Life Card Company, Limited.	31-19, Shiba 2-chome, Minato-ku, Tokyo	October 27, 2004	¥ 255	Credit Card Business	40.0	—
HR One Corporation	5-12, Tsukiji 5-chome, Chuo-ku, Tokyo	May 20, 2002	¥ 603	HR-related Services Business	33.4	—
JP Asset Management Co., Ltd.	5-11, Nihonbashi-honcho 1-chome, Chuo-ku, Tokyo	August 18, 2015	¥ 500	Investment Management	30.0	—
Japan Management Succession Support Co. Ltd.	2-1, Kasumigaseki 3-chome, Chiyoda-ku, Tokyo	April 16, 2015	¥ 489	M&A Consulting, Intermediary and Advisory Services	23.8	—
Enex Asset Management Co., Ltd.	2-5, Kasumigaseki 3-chome, Chiyoda-ku, Tokyo	August 19, 2013	¥ 382	Investment Corporation, Asset Management Business	22.4	—
Sky Ocean Asset Management Co., Ltd.	1-1, Minatomirai 3-chome, Nishi-ku, Yokohama, Kanagawa	November 25, 2014	¥ 300	Investment Management	21.0	—
Mitsui & Co., Logistics Partners Ltd.	2-1, Nishi-kanda 3-chome, Chiyoda-ku, Tokyo	July 13, 2004	¥ 150	Investment Corporation, Asset Management Business	20.0	—
Cardif Assurance Vie (Japan)	20-1, Sakuragaoka-cho, Shibuya-ku, Tokyo	July 3, 2017	¥ 20,600	Life Insurance Business	20.0	—

Overseas

Name	Location	Date of Establishment	Paid-in Capital (Millions)	Scope of Business	Ownership by SuMi TRUST Bank (%)	Ownership by subsidiaries (%)
Sumitomo Mitsui Trust (Hong Kong) Limited	25/F, AIA Central, 1 Connaught Road, Central, Hong Kong	July 4, 1978	\$ 45	Securities Business	100.0	—
Sumitomo Mitsui Trust Bank (Luxembourg) S.A.	2, rue Petermelchen, L-2370, Howald, Grand Duchy of Luxembourg	April 22, 1985	\$ 30	Trust, Banking, Securities Businesses	100.0	—
Sumitomo Mitsui Trust Bank (U.S.A.) Limited	111 River Street, Hoboken, NJ 07030, U.S.A.	May 20, 2002	\$ 56	Banking, Trust Businesses	100.0	—
Sumitomo Mitsui Trust (Ireland) Limited	Block 5, Harcourt Centre, Harcourt Road, Dublin 2, Ireland	June 1, 2004	€ 75.87	Trust Business	100.0	—
Sumitomo Mitsui Trust Bank (Thai) Public Company Limited	32nd Floor, Sathorn Square Office Tower, 98 North Sathorn Road, Silom, Bangrak, Bangkok 10500, Thailand	July 7, 2014	THB 20,000	Banking Business	99.9	0.0
BIDV-SuMi TRUST Leasing Co., Ltd.	20th Floor, Vincom Tower A, 191 Ba Trieu, Hai Ba Trung district, Ha Noi, Vietnam	September 4, 1998	VND 895,600	Leasing Business in Vietnam (including sales finance lease)	49.0	—
Zijin Trust Co., Ltd.	30th Floor, Zifeng Tower, 2 Zhongshan Road(N), Gulou District, Nanjing, Jiangsu Province, 210008, People's Republic of China	September 25, 1992	RMB 2,400	Trust Business	19.9	—
Nanjing Zijin Financial Leasing Co., Ltd.	9th Floor, 309, Hanzhongmendajie, Gulou District, Nanjing, Jiangsu Province, 210036, People's Republic of China	May 20, 2016	RMB 300	Leasing Business	15.0	5.0
Midwest Railcar Corporation	855 South Arbor Vitae Edwardsville, IL 62025, U.S.A.	December 31, 1998	\$ 0.47	Freight Railcar Operating Leasing Business in North America	—	100.0*

* The ownership by subsidiaries is the ownership ratio held by the U.S.-based company in which the SuMi TRUST Group, such as SuMi TRUST Bank and SuMi TRUST Bank's subsidiaries, has a 50.0% stake.