

Board of Directors and Executive Officers (As of July 1, 2021)

Director, President (Representative Executive Officer) Toru Takakura	Director (External) Mitsuhiro Aso* ¹	Executive Officer* ² Atsushi Kaibara	Executive Officer* ² Satoshi Kitai
Director, Deputy President (Representative Executive Officer) Jiro Araumi	Director (External) Nobuaki Katoh* ¹	Executive Officer* ² Seiji Iwakuma	Executive Officer* ² Nobuhisa Takahashi
Director, Senior Managing Executive Officer Nobuaki Yamaguchi	Director (External) Masanori Yanagi* ¹	Executive Officer* ² Kengo Noguchi	Executive Officer* ² Yuki Takada
Director, Executive Officer Kazuya Oyama	Director (External) Kaoru Kashima* ¹	Executive Officer* ² Shigeki Tanaka	Executive Officer* ² Miyo Yajima
Chairman Tetsuo Ohkubo	Senior Managing Executive Officer Hitoshi Sato	Executive Officer* ² Toshiya Shimobeppu	Executive Officer* ² Atsushi Ueda
Director Masaru Hashimoto	Senior Managing Executive Officer Futoshi Itani	Executive Officer* ² Yoshio Hishida	Executive Officer* ² Takuji Marui
Director Kuniyuki Shudo	Managing Executive Officer Junya Ueda	Executive Officer* ² Toshio Masui	Executive Officer* ² Atsushi Matsumoto
Director Kouji Tanaka	Managing Executive Officer Yasuyuki Suzuki	Executive Officer* ² Kenji Kaiya	Executive Officer* ² Shinichi Nonomura
Director (External) Isao Matsushita* ¹	Managing Executive Officer, Executive Officer* ² Toshiaki Nakano	Executive Officer* ² Yoshinori Momose	Executive Officer* ² Riro Sato
Director (External) Shinichi Saito* ¹	Managing Executive Officer Manatomo Yoneyama	Executive Officer* ² Takashi Kameda	Executive Officer* ² Akira Ojima
Director (External) Hiroko Kawamoto* ¹	Executive Officer, Executive Officer* ² Shigenori Ikemura	Executive Officer* ² Daisuke Maeda	

*1 External Directors as provided for in Article 2, Item 15 of the Companies Act.

*2 Executive Officers as defined in our internal policy; unless otherwise annotated, Executive Officers are defined in the Companies Act.

Employees (As of March 31, 2021)

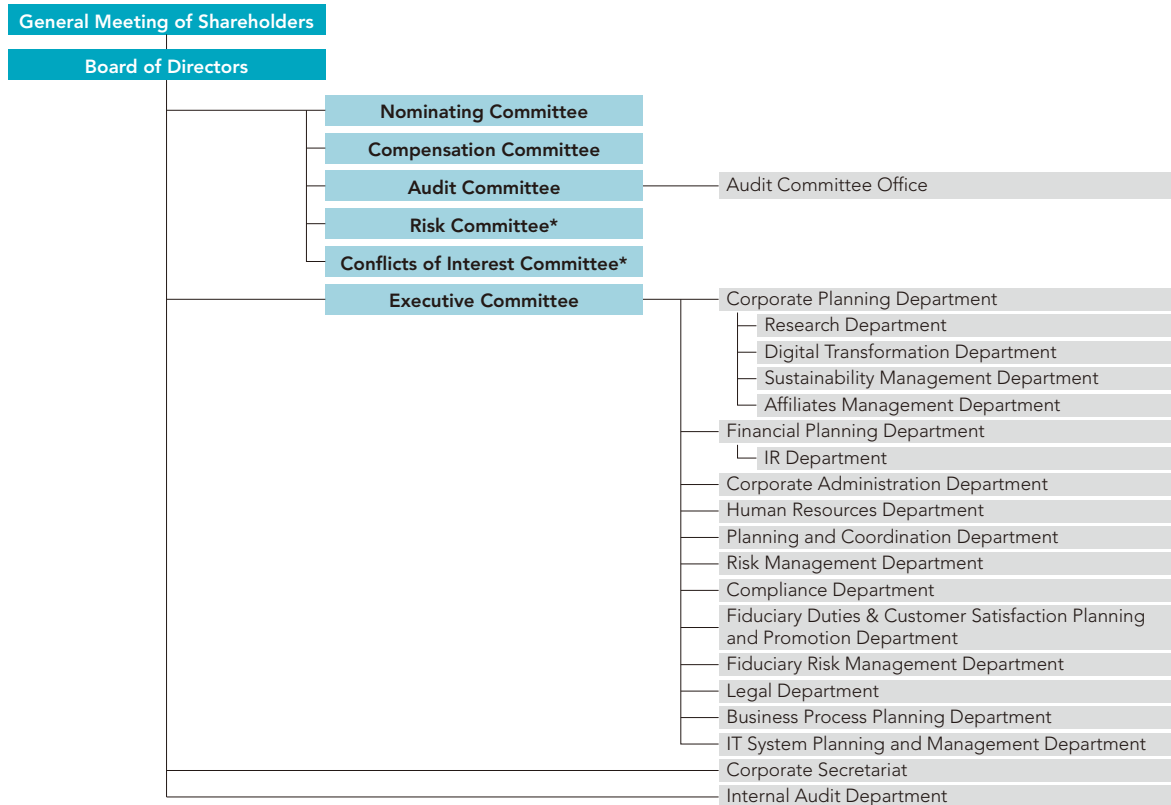
Category	March 31, 2021	March 31, 2020
Number of Employees	184	169
Average Age	51 years, 5 months	51 years, 4 months
Average Length of Employment	23 years, 8 months	23 years, 1 month
Average Annual Salary	¥12,617 thousand	¥12,013 thousand

Notes: 1. The number of employees indicates total personnel, etc., excluding employees seconded to other companies and temporary and part-time staff.

2. Employees include those seconded from SuMi TRUST Bank and the average length of employment includes years of employment at their own companies.

3. Average annual salary includes bonus and extra payment.

Organizational Chart (As of June 30, 2021)



* Risk Committee and Conflicts of Interest Committee are Voluntary committees.

Subsidiaries and Affiliated Companies (As of June 30, 2021)

Japan

Name	Location	Date of Establishment	Paid-in Capital (Millions)	Scope of Business	Ownership by SuMi TRUST Holdings (%)	Ownership by subsidiaries (%)
Sumitomo Mitsui Trust Bank, Limited	4-1, Marunouchi 1-chome, Chiyoda-ku, Tokyo	July 28, 1925	¥ 342,037	Trust and Banking Business	100.0	—
Sumitomo Mitsui Trust Asset Management Co., Ltd.	1-1, Shibakoen 1-chome, Minato-ku, Tokyo	November 1, 1986	¥ 2,000	Investment Management Business, Investment Advisory and Agency Business	100.0	—
Sumitomo Mitsui Trust Research Institute Co., Ltd.	33-1, Shiba 3-chome, Minato-ku, Tokyo	July 1, 1988	¥ 300	Survey, Research, Consulting, Investment Advisory Business	100.0	—
Trust Base Co., Ltd.*	6-1, Otemachi 1-chome, Chiyoda-ku, Tokyo	April 1, 2021	¥ 100	Survey, Research, Consulting	100.0	—
Nikko Asset Management Co., Ltd.	7-1, Akasaka 9-chome, Minato-ku, Tokyo	December 1, 1959	¥ 17,363	Investment Management Business, Investment Advisory and Agency Business	99.0	0.9
Mutual Fund & Insurance Research Institute	33-1, Shiba 3-chome, Minato-ku, Tokyo	December 1, 2017	¥ 150	Survey, Research, Consulting	88.0	—
UBS SuMi TRUST Wealth Advisory, Ltd.	4-1, Marunouchi 1-chome, Chiyoda-ku, Tokyo	September 25, 2019	¥ 5	Concurrent sales agency services, Financial instruments intermediary services, Banking agency services	50.0	—
Custody Bank of Japan, Ltd.	8-12, Harumi 1-chome, Chuo-ku, Tokyo	June 20, 2000	¥ 51,000	Trust and Banking Business	33.3	—

* Trust Garage Co., Ltd changed its name to Trust Base Co., Ltd as of September 1, 2021.

Note: For details concerning subsidiaries and affiliated companies of SuMi TRUST Bank, please refer to page 13.