

## Board of Directors and Executive Officers (As of July 1, 2021)

Chairman <b>Masaru Hashimoto</b>	Senior Managing Executive Officer <b>Naohiro Tanaka</b>	Executive Officer <b>Shigeki Moriki</b>	Executive Officer <b>Iwao Nakamura</b>
President (Representative Director) <b>Kazuya Oyama</b>	Senior Managing Executive Officer <b>Akira Yokota</b>	Executive Officer <b>Teruki Ido</b>	Executive Officer <b>Masatoshi Yoshikawa</b>
Deputy President (Representative Director) <b>Atsushi Kaibara</b>	Senior Managing Executive Officer <b>Toshiya Shimobeppu</b>	Executive Officer <b>Yuki Takada</b>	Executive Officer <b>Hidehiro Miyahara</b>
Deputy President (Representative Director) <b>Seiji Iwakuma</b>	Managing Executive Officer <b>Toshio Masui</b>	Executive Officer <b>Miyo Yajima</b>	Executive Officer <b>Junichiro Usui</b>
Deputy President (Representative Director) <b>Kengo Noguchi</b>	Managing Executive Officer <b>Kouji Koyanagi</b>	Executive Officer <b>Yasuo Hanashita</b>	Executive Officer <b>Riro Sato</b>
Director, Senior Managing Executive Officer <b>Shigeki Tanaka</b>	Managing Executive Officer <b>Kenji Kaiya</b>	Executive Officer <b>Atsushi Ueda</b>	Executive Officer <b>Kenji Amihama</b>
Director, Senior Managing Executive Officer <b>Hitoshi Sato</b>	Managing Executive Officer <b>Keiichi Hamano</b>	Executive Officer <b>Takuji Marui</b>	Executive Officer <b>Akira Ojima</b>
Director, Senior Managing Executive Officer <b>Futoshi Itani</b>	Managing Executive Officer <b>Yoshinori Momose</b>	Executive Officer <b>Hitoshi Kotaka</b>	Executive Officer <b>Toru Masuda</b>
Director, Senior Managing Executive Officer <b>Nobuaki Yamaguchi</b>	Managing Executive Officer <b>Hideshi Sano</b>	Executive Officer <b>Atsushi Matsumoto</b>	Executive Officer <b>Yuuko Nishigaya</b>
Director, Managing Executive Officer <b>Yasuyuki Suzuki</b>	Managing Executive Officer <b>Yasunaga Matsumoto</b>	Executive Officer <b>Shinichi Nonomura</b>	Executive Officer <b>Natsuki Kitaguchi</b>
Director, Managing Executive Officer <b>Manatomo Yoneyama</b>	Managing Executive Officer <b>Ryouji Nishimoto</b>	Executive Officer <b>Kazuhiko Kasuya</b>	Executive Officer <b>Hiroshi Matsumoto</b>
Director <b>Tetsuo Ohkubo</b>	Managing Executive Officer <b>Masahiko Kitajima</b>	Executive Officer <b>Takehiko Iwahara</b>	Executive Officer <b>Michihiro Ooishi</b>
Director <b>Toru Takakura</b>	Managing Executive Officer <b>Takashi Kameda</b>	Executive Officer <b>Takafumi Arimura</b>	Executive Officer <b>Shigeyuki Oouchi</b>
Director (External) <b>Hideki Kanda*</b>	Managing Executive Officer <b>Daisuke Maeda</b>	Executive Officer <b>Kouichi Kato</b>	Executive Officer <b>Kouichi Hashiguchi</b>
Director (External) <b>Michiko Achilles*</b>	Managing Executive Officer <b>Junya Ueda</b>	Executive Officer <b>Shinichi Tao</b>	Executive Officer <b>Kouichi Taguchi</b>
Director (Audit and Supervisory Committee member) <b>Kazuhisa Koashi</b>	Managing Executive Officer <b>Toshiaki Nakano</b>	Executive Officer <b>Masakatsu Sato</b>	Executive Officer <b>Makoto Takamura</b>
Director (Audit and Supervisory Committee member) <b>Tsutomu Kurai</b>	Managing Executive Officer <b>Satoshi Kitai</b>	Executive Officer <b>Takehiko Sakaue</b>	Executive Officer <b>Masayuki Okamoto</b>
Director (Audit and Supervisory Committee member) (External) <b>Hiroshi Mitsunaga*</b>	Managing Executive Officer <b>Masaya Noda</b>	Executive Officer <b>Kazuteru Wakao</b>	Executive Officer <b>Nobuo Murakami</b>
Director (Audit and Supervisory Committee member) (External) <b>Hiroya Nakakubo*</b>	Managing Executive Officer <b>Tetsuya Hiwatashi</b>	Executive Officer <b>Makito Oono</b>	Executive Officer <b>Hisato Nakano</b>
Director (Audit and Supervisory Committee member) (External) <b>Junko Sasaki*</b>	Managing Executive Officer <b>Takumi Fujisawa</b>	Executive Officer <b>Katsuji Oka</b>	
	Managing Executive Officer <b>Nobuhisa Takahashi</b>	Executive Officer <b>Toru Nakagawa</b>	

\* External Directors as provided for in Article 2, Item 15 of the Companies Act.  
Executive Officers as defined in our internal policy.

# Employees (As of March 31, 2021)

Category	March 31, 2021	March 31, 2020
Number of Employees	13,740	13,527
Average Age	41 years, 6 months	41 years, 5 months
Average Length of Employment	14 years, 0 month	14 years, 1 month
Average Annual Salary	¥7,064 thousand	¥7,349 thousand

Notes: 1. The number of employees indicates total personnel, etc., excluding employees seconded to other companies and temporary and part-time staff.  
2. Average annual salary includes bonus and extra payment.

# Organizational Chart (As of June 30, 2021)

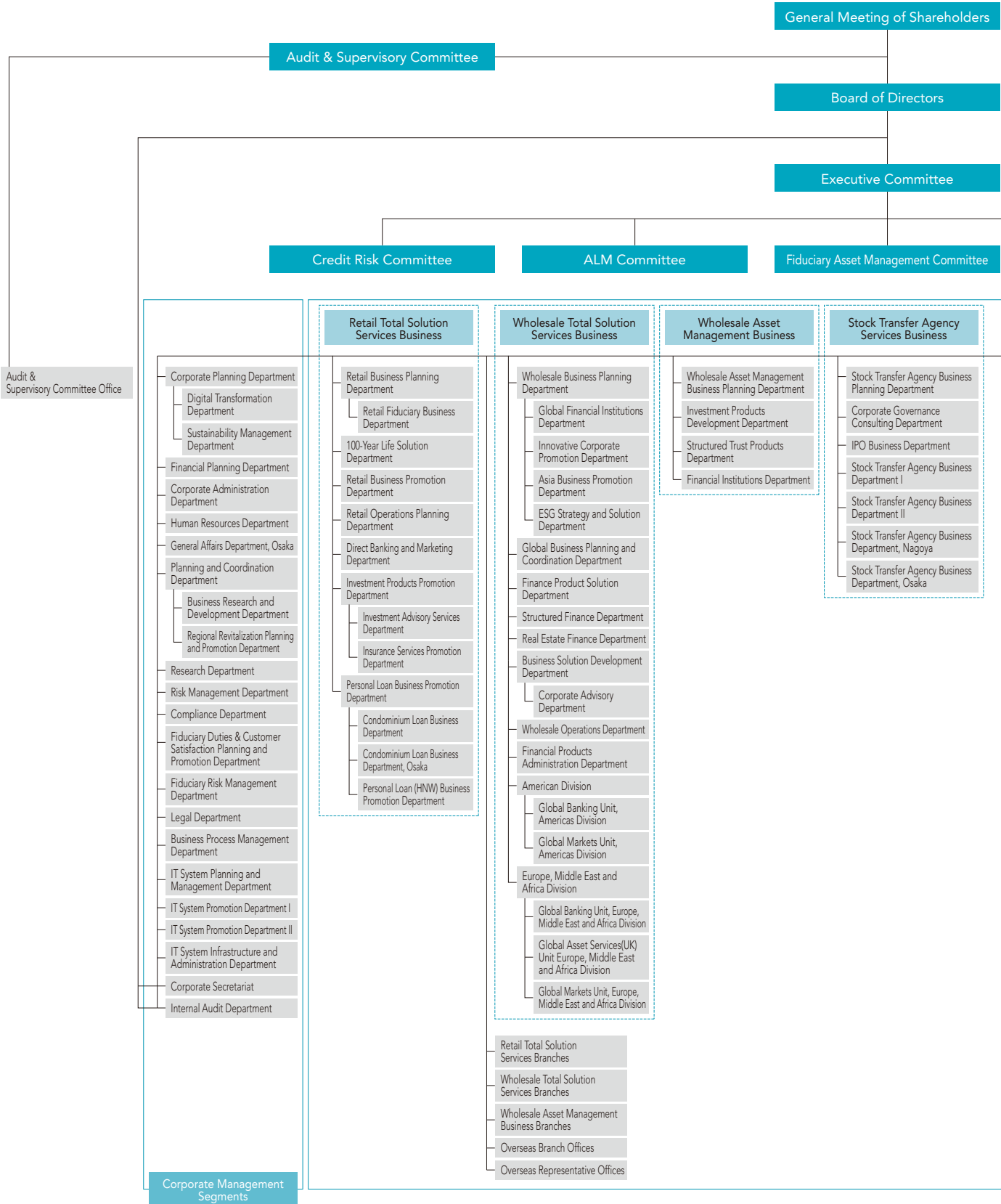
Corporate Data

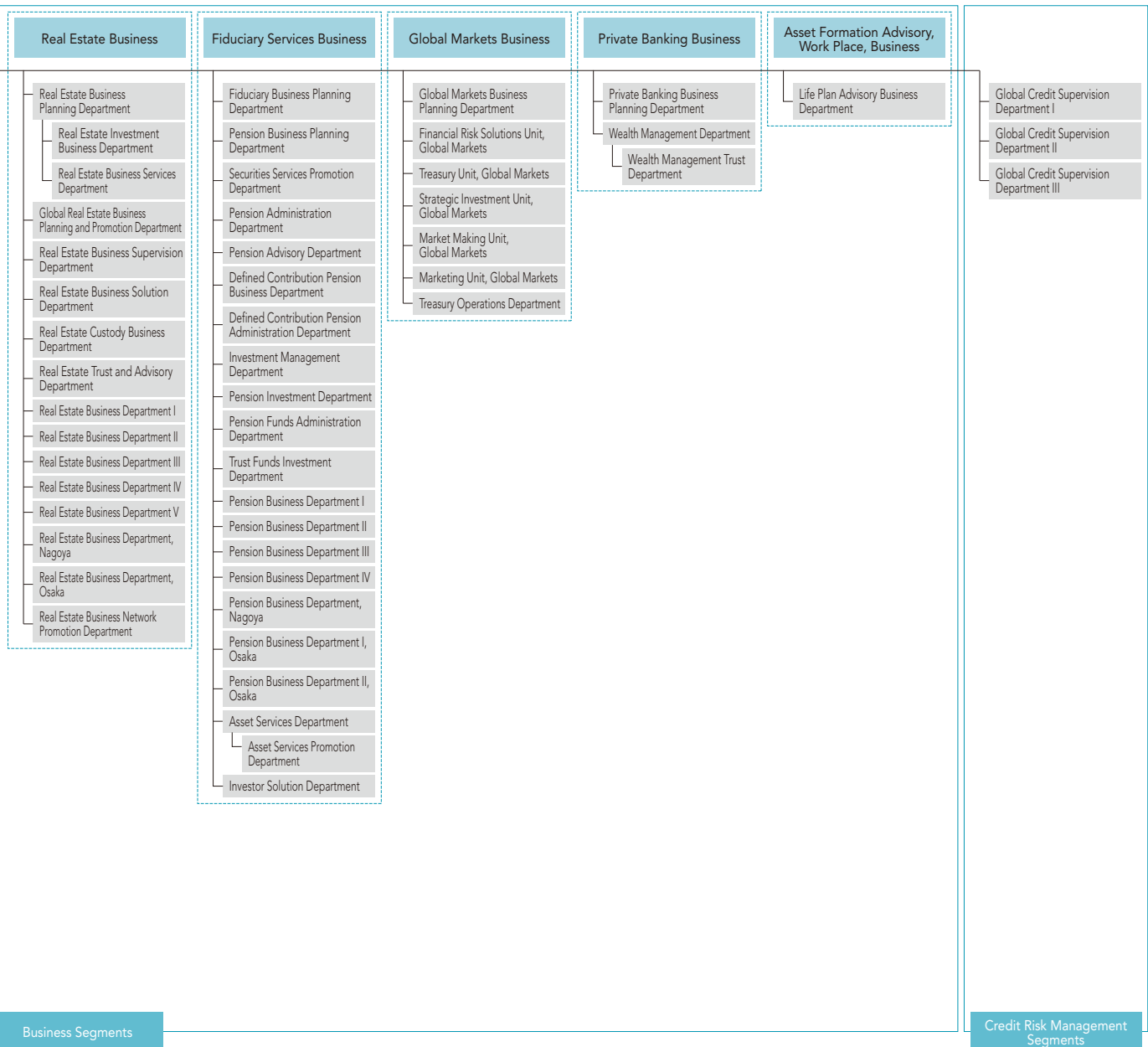
Financial Data/  
Sumitomo Mitsui Trust Holdings, Inc.

Financial Data/  
Sumitomo Mitsui Trust Bank, Limited

Base I/II Disclosure Data/  
Sumitomo Mitsui Trust Holdings, Inc.

Base I/II Disclosure Data/  
Sumitomo Mitsui Trust Bank, Limited





Business Segments

Credit Risk Management Segments

# Branches (As of June 30, 2021)

☐ ... These branches house two sales outlets under one roof, a "branch-in-a-branch" method.

## Hokkaido, Tohoku

### Sapporo Branch

**Sapporo-Chuo Branch**  
1, Kita 2-jo Nishi 4-chome, Chuo-ku, Sapporo,  
Hokkaido 060-0002, Japan

### Sendai Branch

**Sendai-Aoba Branch**  
1-7, Chuo 2-chome, Aoba-ku, Sendai,  
Miyagi 980-0021, Japan

## Tokyo

### Tokyo Business Department

4-1, Marunouchi 1-chome, Chiyoda-ku,  
Tokyo 100-8233, Japan

### Nihonbashi Business Department

**Tokyo-Chuo Branch**  
1-1, Nihonbashi-muromachi 2-chome, Chuo-ku,  
Tokyo 103-0022, Japan

### Consulting Plaza Shimbashi (Shimbashi Sub-Branch, Tokyo Business Department)

20-1, Shimbashi 2-chome, Minato-ku,  
Tokyo 105-0004, Japan

### Toranomon Consulting Office (Toranomon Sub-Branch, Tokyo Business Department)

7-1, Nishi Shimbashi 1-chome, Minato-ku,  
Tokyo 105-0003, Japan

### Shiba Business Department

33-1, Shiba 3-chome, Minato-ku,  
Tokyo 105-8574, Japan

### Shinjuku-Nishiguchi Branch

1-4, Nishi Shinjuku 1-chome, Shinjuku-ku,  
Tokyo 160-0023, Japan

### Shinjuku Branch

26-11, Shinjuku 3-chome, Shinjuku-ku,  
Tokyo 160-0022, Japan

### Ueno Branch

**Ueno-Chuo Branch**  
19-10, Ueno 1-chome, Taito-ku,  
Tokyo 110-0005, Japan

### Meguro Branch

25-5, Kamiosaki 2-chome, Shinagawa-ku,  
Tokyo 141-0021, Japan

### Omori Branch

1-1, Sanno 2-chome, Ota-ku,  
Tokyo 143-0023, Japan

### Sangenjaya Branch

1-1, Taishido 4-chome, Setagaya-ku,  
Tokyo 154-0004, Japan

### Futako-Tamagawa Branch

22-12, Tamagawa 2-chome, Setagaya-ku,  
Tokyo 158-0094, Japan

### Consulting Plaza Seijo (Seijo Sub-Branch, Shinjuku-Nishiguchi Branch)

5-34, Seijo 6-chome, Setagaya-ku,  
Tokyo 157-0066, Japan

### Consulting Plaza Chofu (Chofu Sub-Branch, Shinjuku-Nishiguchi Branch)

48-26, Kojima-cho 2-chome, Chofu,  
Tokyo 182-0026, Japan

### Shibuya Branch Shibuya-Chuo Branch

2-3, Dogenzaka 1-chome, Shibuya-ku,  
Tokyo 150-0043, Japan

### Shibuya Square A Building Sub-branch of Shibuya Branch

### Shibuya Square A Building Sub-branch of Shibuya Central Branch

9-5, Dogenzaka 1-chome, Shibuya-ku,  
Tokyo 150-0043, Japan

### Jiyugaoka Branch

10-20, Jiyugaoka 2-chome, Meguro-ku,  
Tokyo 152-0035, Japan

### Nakano Branch

62-5, Nakano 5-chome, Nakano-ku,  
Tokyo 164-0001, Japan

### Ogikubo Branch

18-10, Kamiogi 1-chome, Sugiyama-ku,  
Tokyo 167-0043, Japan

### Ikebukuro Branch Ikebukuro-Higashiguchi Branch

41-7, Higashi Ikebukuro 1-chome, Toshima-ku,  
Tokyo 170-0013, Japan

### Shakujii Branch

14-1, Shakujii-cho 2-chome, Nerima-ku,  
Tokyo 177-0041, Japan

### Kichijoji Branch

**Kichijoji-Chuo Branch**  
2-15, Kichijoji Hon-cho 2-chome, Musashino,  
Tokyo 180-0004, Japan

### Koganei Branch

10-1, Hon-cho 5-chome, Koganei,  
Tokyo 184-0004, Japan

### Tachikawa Branch Tachikawa-Kitaguchi Branch

6-1, Akebono-cho 2-chome, Tachikawa,  
Tokyo 190-0012, Japan

### Hachioji Branch Hachioji-Ekimae Branch

9-1, Asahi-cho, Hachioji,  
Tokyo 192-0083, Japan

### Machida Branch

3-4, Haramachida 6-chome, Machida,  
Tokyo 194-0013, Japan

### Tama-Sakuragaoka Branch

1-5, Sekido 1-chome, Tama,  
Tokyo 206-0011, Japan

### Consulting Plaza Seiseki (Seiseki-Sakuragaoka Sub-Branch, Tama-Sakuragaoka Branch)

7-5, Sekido 1-chome, Tama,  
Tokyo 206-0011, Japan

### Consulting Plaza Tama-Center (Tama-Center Sub-Branch, Tama-Sakuragaoka Branch)

44, Ochiai 1-chome, Tama,  
Tokyo 206-0033, Japan

## Kanto

### Urawa Branch

12-1, Takasago 1-chome, Urawa-ku,  
Saitama 330-0063, Japan

### Omiya Branch

#### Omiya-Ekimae Branch

32, Daimon-cho 1-chome, Omiya-ku,  
Saitama 330-8511, Japan

### Tokorozawa Branch

#### Tokorozawa-Ekimae Branch

3-5, Hiyoshi-cho, Tokorozawa,  
Saitama 359-8691, Japan

### Koshigaya Branch

14-22, Yayoi-cho, Koshigaya,  
Saitama 343-0816, Japan

### Sugito Branch

13-12, Sugito 2-chome, Sugito-machi, Kitakatsushika-gun,  
Saitama 345-0036, Japan

### Chiba Branch

#### Chiba-Ekimae Branch

1-16, Fujimi 1-chome, Chuo-ku,  
Chiba 260-0015, Japan

### Ichikawa Branch

7-13, Ichikawa 1-chome, Ichikawa,  
Chiba 272-0034, Japan

### Funabashi Branch

3-1, Hon-cho 1-chome, Funabashi,  
Chiba 273-0005, Japan

### Tsudanuma Branch

14-5, Maebara Nishi 2-chome, Funabashi,  
Chiba 274-0825, Japan

### Matsudo Branch

2-1, Hon-cho, Matsudo,  
Chiba 271-0091, Japan

### Kashiwa Branch

2-1, Kashiwa 4-chome, Kashiwa,  
Chiba 277-0005, Japan

### Yachiyo Branch

3-1, Yachiyodai Minami 1-chome, Yachiyo,  
Chiba 276-0033, Japan

### Yokohamaeki-Nishiguchi Branch

#### Yokohama Branch

6-31, Minami Saiwai 1-chome, Nishi-ku, Yokohama,  
Kanagawa 220-0005, Japan

### Yokohama Housing Loan Center Sub-Branch, Yokohamaeki-Nishiguchi Branch

6-1, Kita Saiwai 1-chome, Nishi-ku, Yokohama,  
Kanagawa 220-0004, Japan

### Futamatagawa Branch

3-2, Futamatagawa 1-chome, Asahi-ku, Yokohama,  
Kanagawa 241-0821, Japan

### Tama-Plaza Branch

15-8, Utsukushigaoka 2-chome, Aoba-ku, Yokohama,  
Kanagawa 225-0002, Japan

### Aobadai Branch

9-2, Aobadai 2-chome, Aoba-ku, Yokohama,  
Kanagawa 227-0062, Japan

### Consulting Plaza Kohoku

#### (Kohoku Sub-Branch, Tama-Plaza Branch)

1-3, Nakagawa Chuo 1-chome, Tsuzuki-ku, Yokohama,  
Kanagawa 224-0003, Japan

### Konandai Branch

15-2-102, Konandai 3-chome, Konan-ku, Yokohama,  
Kanagawa 234-0054, Japan

### Kamiooka Branch

18-5, Kamiooka Nishi 1-chome, Konan-ku, Yokohama,  
Kanagawa 233-0002, Japan

### Consulting Plaza Totsuka

#### (Totsuka Sub-Branch, Yokohamaeki-Nishiguchi Branch)

16-1, Totsuka-cho, Totsuka-ku, Yokohama,  
Kanagawa 244-0003, Japan

### Kawasaki Branch

3-1, Ekimae Hon-cho, Kawasaki-ku, Kawasaki,  
Kanagawa 210-0007, Japan

### Shin-Yurigaoka Branch

5-3, Kamiasao 1-chome, Asao-ku, Kawasaki,  
Kanagawa 215-0021, Japan

### Yokosuka Branch

3, Odaki-cho 2-chome, Yokosuka,  
Kanagawa 238-0008, Japan

### Fujisawa Branch

#### Fujisawa-Chuo Branch

21-1-101, Minami Fujisawa, Fujisawa,  
Kanagawa 251-0055, Japan

### Sagami-Ono Branch

13-7, Sagamiono 3-chome, Minami-ku, Sagami-hara,  
Kanagawa 252-0303, Japan

### Atsugi Branch

5-14, Naka-cho 3-chome, Atsugi,  
Kanagawa 243-0018, Japan

### Odawara Branch

2-12, Sakae-cho 1-chome, Odawara,  
Kanagawa 250-0011, Japan

### Utsunomiya Branch

4-12, Hon-cho, Utsunomiya,  
Tochigi 320-0033, Japan

### Maebashi Branch

2-12, Hon-machi 2-chome, Maebashi,  
Gunma 371-0023, Japan

## Koshinetsu, Hokuriku

### Kofu Branch

17-14, Marunouchi 1-chome, Kofu,  
Yamanashi 400-0031, Japan

### Niigata Branch Niigata-Chuo Branch

1178-1, Kamiokawa-maedori Rokuban-cho, Chuo-ku,  
Niigata 951-8068, Japan

### Toyama Branch

1-36, Sakura-machi 1-chome, Toyama 930-0003, Japan

### Kanazawa Branch Kanazawa-Chuo Branch

1-18, Kami Tsutsumi-cho, Kanazawa,  
Ishikawa 920-0869, Japan

### Fukui Branch

7-1, Chuo 1-chome,  
Fukui 910-0006, Japan

## Tokai

### Nagoya Business Department Nagoya-Sakae Branch

15-33, Sakae 3-chome, Naka-ku, Nagoya,  
Aichi 460-0008, Japan

### Kanayamabashi Branch

15-10, Kanayama 1-chome, Naka-ku, Nagoya,  
Aichi 460-0022, Japan

### Nagoya-Ekimae Branch Meieki-Minami Branch

26-8, Meieki 3-chome, Nakamura-ku, Nagoya,  
Aichi 450-0002, Japan

### Hoshigaoka Branch

106, Inoue-cho, Chikusa-ku, Nagoya,  
Aichi 464-0026, Japan

### Ichinomiya Branch

7-15, Sakae 3-chome, Ichinomiya,  
Aichi 491-0858, Japan

### Okazaki Branch

16, Koseidori-Nishi 3-chome, Okazaki,  
Aichi 444-0059, Japan

### Toyohashi Branch

135, Ekimaeodori 1-chome, Toyohashi,  
Aichi 440-0888, Japan

### Shizuoka Branch Shizuoka-Chuo Branch

3-10, Koya-machi, Aoi-ku,  
Shizuoka 420-0852, Japan

### Numazu Branch

4-2, Ote-machi 5-chome, Numazu,  
Shizuoka 410-0801, Japan

### Gifu Branch

3, Nagazumi-cho 2-chome,  
Gifu 500-8175, Japan

### Yokkaichi Branch

5-4, Suwa-cho, Yokkaichi,  
Mie 510-8650, Japan

## Kinki

### Osaka Business Department Osaka-Chuo Branch

5-33, Kitahama 4-chome, Chuo-ku,  
Osaka 540-8639, Japan

### Umeda Branch Hankyu-Umeda Branch

8-47, Kakuda-cho, Kita-ku,  
Osaka 530-0017, Japan

### Namba Branch Namba-Chuo Branch

1-60, Namba 5-chome, Chuo-ku,  
Osaka 542-0076, Japan

### Namba Housing Loan Center Sub-Branch, Namba Branch

10-70, Namba-naka 2-chome, Naniwa-ku,  
Osaka 556-0011, Japan

### Abenobashi Branch Abeno Branch

6-1, Abenosuji 1-chome, Abeno-ku,  
Osaka 545-0052, Japan

### Sakai Branch

59-2, Mikunigaoka Miyuki-dori, Sakai-ku, Sakai,  
Osaka 590-0028, Japan

### Consulting Plaza Izumigaoka (Senboku Sub-Branch, Sakai Branch)

2-1, Chayamadai 1-chome, Minami-ku, Sakai,  
Osaka 590-0115, Japan

### Yao Branch

6-8, Higashi Hon-machi 3-chome, Yao,  
Osaka 581-0004, Japan

### Hirakata Branch Keihan-Hirakata Branch

13-20, Oka Higashi-cho, Hirakata,  
Osaka 573-0032, Japan

### Takatsuki Branch

5-20, Konya-machi, Takatsuki,  
Osaka 569-0804, Japan

### Ibaraki Branch

2-30, Futaba-cho, Ibaraki,  
Osaka 567-0829, Japan

### Toyonaka Branch

1-1, Hon-machi 1-chome, Toyonaka,  
Osaka 560-0021, Japan

### Senri-Chuo Branch

1-3, Shinsenri Higashi-machi 1-chome, Toyonaka,  
Osaka 560-0082, Japan

### Ikeda Branch

1-1-134, Kureha-cho, Ikeda,  
Osaka 563-0048, Japan

**Kobe Branch**  
**Kobe-Sannomiya Branch**  
 1-6, Goko-dori 8-chome, Chuo-ku, Kobe,  
 Hyogo 651-0087, Japan

**Consulting Plaza Seishin-Chuo**  
**(Seishin-Chuo Sub-Branch, Kobe Branch)**  
 9-4, Kojidai 5-chome, Nishi-ku, Kobe,  
 Hyogo 651-2273, Japan

**Tsukaguchi Branch**  
 15-1, Tsukaguchi-cho 1-chome, Amagasaki,  
 Hyogo 661-0002, Japan

**Nishinomiya Branch**  
 5-39, Takamatsu-cho, Nishinomiya,  
 Hyogo 663-8204, Japan

**Ashiya Branch**  
 5-2, Funado-cho, Ashiya,  
 Hyogo 659-0093, Japan

**Kawanishi Branch**  
 7-18, Chuo-cho, Kawanishi,  
 Hyogo 666-0016, Japan

**Akashi Branch**  
 5-28, Higashinakano-machi, Akashi,  
 Hyogo 673-0886, Japan

**Himeji Branch**  
 252, Ekimae-cho, Himeji,  
 Hyogo 670-0927, Japan

**Kyoto Branch**  
**Kyoto-Shijo Branch**  
 612, Karasuma-dori Shijo-sagaru Suiginya-cho, Shimogyo-ku,  
 Kyoto 600-8411, Japan

**Otsu Branch**  
 3-10, Umebayashi 1-chome, Otsu,  
 Shiga 520-0051, Japan

**Nara-Saidaiji Branch**  
 1-50, Saidaiji Higashi-machi 2-chome,  
 Nara 631-0821, Japan

**Consulting Plaza Gakuenmae**  
**(Gakuenmae Sub-Branch,**  
**Nara-Saidaiji Branch)**  
 8-11, Gakuen Kita 1-chome,  
 Nara 631-0036, Japan

**Wakayama Branch**  
 3-17, Higashi Kuramae-cho,  
 Wakayama 640-8203, Japan

## Chugoku, Shikoku

**Tottori Branch**  
 103, Ima-machi 1-chome,  
 Tottori 680-0822, Japan

**Okayama Branch**  
**Okayama-Chuo Branch**  
 1-5, Ekimoto-machi, Kita-ku,  
 Okayama 700-0024, Japan

**Okayama-Ekimae Sub-Branch,**  
**Okayama Branch**  
**Okayama-Ekimae Sub-Branch,**  
**Okayama-Chuo Branch**  
 1-6, Ekimoto-machi, Kita-ku,  
 Okayama 700-0024, Japan

**Hiroshima Branch**  
**Hiroshima-Chuo Branch**  
 2-22, Kamiya-cho 1-chome, Naka-ku,  
 Hiroshima 730-0031, Japan

**Fukuyama Branch**  
 15-1, Moto-machi, Fukuyama,  
 Hiroshima 720-0063, Japan

**Yamaguchi-Hofu Branch**  
 4-24, Ebisu-machi 1-chome, Hofu,  
 Yamaguchi 747-0036, Japan

**Takamatsu Branch**  
 9-4, Konya-machi, Takamatsu,  
 Kagawa 760-0027, Japan

**Matsuyama Branch**  
 11-1, Sanban-cho 4-chome, Matsuyama,  
 Ehime 790-0003, Japan

## Kyushu

**Fukuoka Branch**  
**Fukuoka-Tenjin Branch**  
 12-1, Tenjin 2-chome, Chuo-ku,  
 Fukuoka 810-0001, Japan

**Kita-Kyushu Branch**  
 1-5, Kaji-machi 1-chome, Kokurakita-ku, Kita-Kyushu,  
 Fukuoka 802-0004, Japan

**Saga Branch**  
 3-2, Matsubara 1-chome,  
 Saga 840-0831, Japan

**Kumamoto Branch**  
**Kumamoto-Chuo Branch**  
 2-5, Tetori Hon-cho, Chuo-ku,  
 Kumamoto 860-0808, Japan

**Oita Branch**  
 3-23, Chuo-machi 1-chome,  
 Oita 870-0035, Japan

**Kagoshima Branch**  
 7-8-101, Kinsei-cho,  
 Kagoshima 892-0828, Japan

## Overseas Network

### Branch

**New York Branch**  
 1251 Avenue of the Americas, New York,  
 NY 10020, U.S.A.

**London Branch**  
 155 Bishopsgate, London EC2M 3XU, U.K.

**Singapore Branch**  
 One Raffles Quay, #24-01 North Tower,  
 Singapore 048583

**Shanghai Branch**  
 50F Jin Mao Tower, 88 Shiji Dadao Pudong New Area,  
 Shanghai 200121, People's Republic of China

**Hong Kong Branch**  
 25/F, AIA Central, 1 Connaught Road, Central,  
 Hong Kong

### Representative Office

**Beijing Representative Office**  
**(Banking business)**  
 Room 2008, Building No. 2,  
 No. 26, Jianguomenwai Dajie, Chaoyang District,  
 Beijing 100022, People's Republic of China

**Beijing Representative Office**  
**(Securities business)**  
 Room 5011, 5th Floor, Chang Fu Gong Office Building,  
 No. 26, Jianguomenwai Dajie, Chaoyang District,  
 Beijing 100022, People's Republic of China

**Jakarta Representative Office**  
 20th Floor, Summitmas I,  
 Jl. Jend. Sudirman, Kaveling 61-62,  
 Jakarta 12190, Indonesia

**Seoul Representative Office**  
 20th Floor, Booyoung Taepyoung Building, 55,  
 Sejong-daero, Jung-gu, Seoul 04513, Korea

**Sydney Representative Office**  
 Suite 3, Level 39, 259 George Street,  
 Sydney NSW 2000, Australia



## Number of Contracted Trust Agencies\* (As of March 31, 2021)

\*Trust Agency is a collective term that refers to trust contract agencies under the Trust Business Act as well as agencies concurrently engaged in trust business under Article 1 of the Act on Provision, etc. of Trust Business by Financial Institutions.

Type	Number of Agencies					
	Trust Contract Agencies	Agencies Engaged in Concurrent Business				
		Stock Transfer Agency Service	Service Related to Wills	Solicitation for National Pension Fund	Discretionary Investment Business	
Banks, Shinkin Banks, etc.	113	67	44	76	55	1
Regional Banks	45	39	31	33	19	1
Second Regional Banks	18	13	7	13	11	—
Shinkin Central Bank, Shinkin Banks	38	13	3	21	25	—
Credit Union	8	—	—	8	—	—
Shoko Chukin Bank	1	1	—	—	—	—
City Banks, etc.	3	1	3	1	—	—
Securities Firms	8	1	4	7	—	—
Life Insurers and Business Enterprises	13	1	1	12	1	—
Total	134	69	49	95	56	1

## Bank Service Agency (As of March 31, 2021)

Trade Name of Bank Service Agency	Business Offices, etc. Operating Bank Agency Service
SBI Sumishin Net Bank, Ltd.	Head Office, East Japan Customer Service Department Center, Ichigo Branch, Budou Branch, Mikan Branch, Lemon Branch, Ringo Branch, Banana Branch, Melon Branch, Kiwi Branch (10 Branches)
UBS SuMi TRUST Wealth Advisory Co., Ltd.	Head Office (1 Branch)
UBS AG (Bank) Tokyo Branch	Marunouchi Sub-branch, Osaka Sub-branch, Nagoya Sub-branch (3 Branches)
Sumitomo Mitsui Trust Life Partners Co., Ltd.	Consulting Plaza for Peaceful 100-Year life Shinjuku office (1 Branch)

# Subsidiaries and Affiliated Companies (As of June 30, 2021)

## Japan

Name	Location	Date of Establishment	Paid-in Capital (Millions)	Scope of Business	Ownership by SuMi TRUST Bank (%)	Ownership by subsidiaries (%)
Tokyo Securities Transfer Agent Co., Ltd.	11, Kanda-nishikicho 3-chome, Chiyoda-ku, Tokyo	November 1, 1962	¥ 50	Stock Transfer Agency Services	100.0	—
Sumitomo Mitsui Trust Club Co., Ltd.	8-10, Harumi 1-chome, Chuo-ku, Tokyo	April 2, 1977	¥ 100	Credit Card Business	100.0	—
Sumitomo Mitsui Trust Guarantee Co., Ltd.	33-1, Shiba 3-chome, Minato-ku, Tokyo	July 10, 1978	¥ 301	Housing Loan Guaranty Business	100.0	—
Sumitomo Mitsui Trust General Service Co., Ltd.	33-1, Shiba 3-chome, Minato-ku, Tokyo	April 2, 1988	¥ 100	Property Leasing and Management Business	100.0	—
Sumitomo Mitsui Trust Wealth Partners Co., Ltd.	33-1, Shiba 3-chome, Minato-ku, Tokyo	November 6, 1989	¥ 155	Consulting Business	100.0	—
Sumitomo Mitsui Trust Business Service Co., Ltd.	33-1, Shiba 3-chome, Minato-ku, Tokyo	May 24, 1990	¥ 100	Back Office Services, Temporary Staffing Business, Outplacement Agency	100.0	—
Sumitomo Mitsui Trust Loan & Finance Co., Ltd.	20-1, Shimbashi 2-chome, Minato-ku, Tokyo	January 22, 1992	¥ 6,000	Money Lending Business	100.0	—
Sumitomo Mitsui Trust TA Solution Co., Ltd.	8-4, Izumi 2-chome, Suginami-ku, Tokyo	July 1, 1998	¥ 2,005	IT, Calculation Outsourcing Business	100.0	—
J-Eurus IR Co., Ltd.	3-1, Marunouchi 3-chome, Chiyoda-ku, Tokyo	December 27, 2000	¥ 10	Consulting Business	100.0	—
Sumitomo Mitsui Trust Real Estate Investment Management Co., Ltd.	11-1, Kanda-nishikicho 3-chome, Chiyoda-ku, Tokyo	November 7, 2005	¥ 300	Investment Management, Investment Advisory	100.0	—
Sumitomo Mitsui Trust Career Partners Co., Ltd.	33-1, Shiba 3-chome, Minato-ku, Tokyo	April 3, 2006	¥ 100	Training Programs, Personnel-related Services	100.0	—
Sumitomo Mitsui Trust Life Partners Co., Ltd.	11-1, Kanda-nishikicho 3-chome, Chiyoda-ku, Tokyo	January 28, 2019	¥ 100	Insurance Agency Business, Banking Agency Services	100.0	—
Japan Securities Agents, Ltd.	2-4, Nihonbashi-kayabacho 1-chome, Chuo-ku, Tokyo	September 13, 1950	¥ 500	Stock Transfer Agency Services	85.1	—
Sumitomo Mitsui Trust Panasonic Finance Co., Ltd.	2-3, Shibaura 1-chome, Minato-ku, Tokyo	February 27, 1967	¥ 25,584	General Leasing, Installment Purchase Services, Credit Card Business	84.8	—
Sumishin Guaranty Company Limited	33-1, Shiba 3-chome, Minato-ku, Tokyo	August 25, 1977	¥ 300	Loan Guarantee Business	—	100.0
Sumitomo Mitsui Trust Card Co., Ltd.	33-1, Shiba 3-chome, Minato-ku, Tokyo	June 24, 1983	¥ 100	Credit Card Business	50.0	50.0
Sumitomo Mitsui Trust Systems & Services Co., Ltd.	1-10, Nikko-cho, Fuchu, Tokyo	February 12, 1973	¥ 100	System Development and Operation Management Services	44.4	55.5
Sumitomo Mitsui Trust Investment Co., Ltd.	33-1, Shiba 3-chome, Minato-ku, Tokyo	March 22, 2000	¥ 100	Equity Investment Business	40.0	60.0
Sumitomo Mitsui Trust Realty Co., Ltd.	11-1, Kanda-nishikicho 3-chome, Chiyoda-ku, Tokyo	January 24, 1986	¥ 300	Real Estate Brokerage Business	4.6	95.3
SBI Sumishin Net Bank, Ltd.	6-1, Roppongi 1-chome, Minato-ku, Tokyo	June 3, 1986	¥ 31,000	Banking Business	50.0	—
Japan Pension Operation Service, Ltd.	24-1, Nihonbashi-hakozakicho, Chuo-ku, Tokyo	December 21, 2004	¥ 100	Calculation of Pension Payments, etc., Clerical Outsourcing Business	50.0	—
Japan Stockholders Data Service Company, Limited	8-4, Izumi 2-chome, Suginami-ku, Tokyo	April 1, 2008	¥ 2,000	Stock Transfer Outsourcing Business	50.0	—
Trust Capital Mezzanine LLC	5-1, Nihonbashi-muromachi 4-chome, Chuo-ku, Tokyo	January 21, 2020	¥ 60	Equity Investment Business	45.0	—
Sumishin Life Card Company, Limited.	31-19, Shiba 2-chome, Minato-ku, Tokyo	October 27, 2004	¥ 255	Credit Card Business	40.0	—
HR One Corporation	5-12, Tsukiji 5-chome, Chuo-ku, Tokyo	May 20, 2002	¥ 603	HR-related Services Business	33.4	—
JP Asset Management Co., Ltd.	5-11, Nihonbashi-honcho 1-chome, Chuo-ku, Tokyo	August 18, 2015	¥ 500	Investment Management	30.0	—
Japan Management Succession Support Co. Ltd.	2-1, Kasumigaseki 3-chome, Chiyoda-ku, Tokyo	April 16, 2015	¥ 489	M&A Consulting, Intermediary and Advisory Services	23.8	—
Enex Asset Management Co., Ltd.	2-5, Kasumigaseki 3-chome, Chiyoda-ku, Tokyo	August 19, 2013	¥ 50	Investment Corporation, Asset Management Business	22.4	—
Sky Ocean Asset Management Co., Ltd.	1-1, Minatomirai 3-chome, Nishi-ku, Yokohama, Kanagawa	November 25, 2014	¥ 300	Investment Management	21.0	—
Mitsui & Co., Logistics Partners Ltd.	2-1, Nishi-kanda 3-chome, Chiyoda-ku, Tokyo	July 13, 2004	¥ 150	Investment Corporation, Asset Management Business	20.0	—
Cardif Assurance Vie (Japan)	20-1, Sakuragaoka-cho, Shibuya-ku, Tokyo	July 3, 2017	¥ 20,600	Life Insurance Business	20.0	—

## Overseas

Name	Location	Date of Establishment	Paid-in Capital (Millions)	Scope of Business	Ownership by SuMi TRUST Bank (%)	Ownership by subsidiaries (%)
Sumitomo Mitsui Trust (Hong Kong) Limited	25/F, AIA Central, 1 Connaught Road, Central, Hong Kong	July 4, 1978	\$ 45	Securities Business	100.0	—
Sumitomo Mitsui Trust Bank (Luxembourg) S.A.	2, rue Petermelchen, L-2370, Howald, Grand Duchy of Luxembourg	April 22, 1985	\$ 30	Trust, Banking, Securities Businesses	100.0	—
Sumitomo Mitsui Trust Bank (U.S.A.) Limited	111 River Street, Hoboken, NJ 07030, U.S.A.	May 20, 2002	\$ 56	Banking, Trust Businesses	100.0	—
Sumitomo Mitsui Trust (Ireland) Limited	Block 5, Harcourt Centre, Harcourt Road, Dublin 2, Ireland	June 1, 2004	€ 75.87	Trust Business	100.0	—
Sumitomo Mitsui Trust Bank (Thai) Public Company Limited	32nd Floor, Sathorn Square Office Tower, 98 North Sathorn Road, Silom, Bangrak, Bangkok 10500, Thailand	July 7, 2014	THB 20,000	Banking Business	99.9	0.0
BIDV-SuMi TRUST Leasing Co., Ltd.	20th Floor, Vincom Tower A, 191 Ba Trieu, Hai Ba Trung district, Ha Noi, Vietnam	September 4, 1998	VND 895,600	Leasing Business in Vietnam (including sales finance lease)	49.0	—
Zijin Trust Co., Ltd.	30th Floor, Zifeng Tower, 2 Zhongshan Road(N), Gulou District, Nanjing, Jiangsu Province, 210008, People's Republic of China	September 25, 1992	RMB 2,400	Trust Business	19.9	—
Nanjing Zijin Financial Leasing Co., Ltd.	9th Floor, 309, Hanzhongmendajie, Gulou District, Nanjing, Jiangsu Province, 210036, People's Republic of China	May 20, 2016	RMB 300	Leasing Business	15.0	5.0
Midwest Railcar Corporation	855 South Arbor Vitae Edwardsville, IL 62025, U.S.A.	December 31, 1998	\$ 0.47	Freight Railcar Operating Leasing Business in North America	—	100.0*
SuMi TRUST Consulting (Beijing) Co., Ltd	Room 7009, Building No. 2, No. 26, Jianguomenwai Dajie, Chaoyang District, Beijing 100022, People's Republic of China	February 1, 2021	RMB 4	Consulting Business	100.0	—

\* The ownership by subsidiaries is the ownership ratio held by the U.S.-based company in which the SuMi TRUST Group, such as SuMi TRUST Bank and SuMi TRUST Bank's subsidiaries, has a 50.0% stake.