

Board of Directors and Executive Officers (As of July 1, 2023)

Director, President
(Representative Executive Officer)
Toru Takakura

Director, Deputy President
(Representative Executive Officer)
Atsushi Kaibara

Director,
Senior Managing Executive Officer
Yasuyuki Suzuki

Director, Executive Officer
Kazuya Oyama

Chairman
Tetsuo Ohkubo

Director
Masaru Hashimoto

Director
Kouji Tanaka

Director
Toshiaki Nakano

Director (External)
Isao Matsushita*¹

Director (External)
Hiroko Kawamoto*¹

Director (External)
Mitsuhiro Aso*¹

Director (External)
Nobuaki Katoh*¹

Director (External)
Kaoru Kashima*¹

Director (External)
Tomonori Ito*¹

Director (External)
Hajime Watanabe*¹

Managing Executive Officer,
Executive Officer*²
Manatomo Yoneyama

Managing Executive Officer
Atsushi Matsumoto

Managing Executive Officer
Masakatsu Sato

Managing Executive Officer
Takumi Fujisawa

Managing Executive Officer
Kazuteru Wakao

Managing Executive Officer
Yuki Takada

Managing Executive Officer
Riro Sato

Managing Executive Officer
Masayuki Okamoto

Executive Officer
Miyo Yajima

Executive Officer, Executive Officer*²
Masaya Yamashiro

Executive Officer*²
Shigeki Tanaka

Executive Officer*²
Yoshio Hishida

Executive Officer*²
Nobuaki Yamaguchi

Executive Officer*²
Futoshi Itani

Executive Officer*²
Daisuke Maeda

Executive Officer*²
Junya Ueda

Executive Officer*²
Masaya Noda

Executive Officer*²
Nobuhisa Takahashi

Executive Officer*²
Takehiko Iwahara

Executive Officer*²
Takafumi Arimura

Executive Officer*²
Atsushi Ueda

Executive Officer*²
Shinichi Tao

Executive Officer*²
Chikako Matsumoto

Executive Officer*²
Tomoya Hirano

Executive Officer*²
Hideki Kiya

Executive Officer*²
Takahiro Yoshida

Executive Officer*²
Masanori Watanabe

Executive Officer*²
Kiyotaka Maita

*¹ External Directors as provided for in Article 2, Item 15 of the Companies Act.

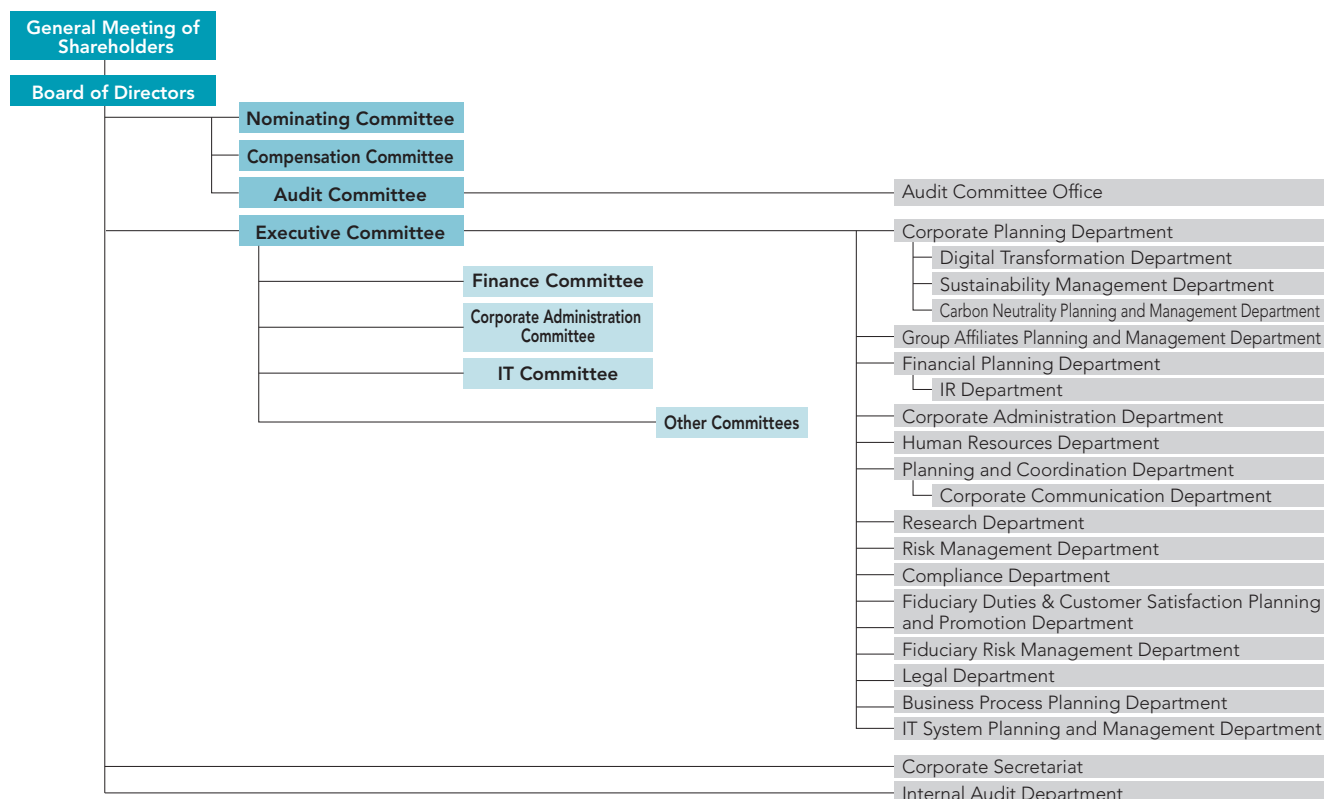
*² Executive Officers as defined in our internal policy; unless otherwise annotated, Executive Officers are defined in the Companies Act.

Employees (As of March 31, 2023)

Category	March 31, 2023	March 31, 2022
Number of Employees	285	233
Average Age	49 years, 9 months	49 years, 8 months
Average Length of Employment	20 years, 9 months	21 years, 1 month
Average Annual Salary	¥12,749 thousand	¥12,684 thousand

Notes: 1. The number of employees indicates total personnel, etc., excluding employees seconded to other companies and temporary and part-time staff.
2. Employees include those seconded from SuMi TRUST Bank and the average length of employment includes years of employment at their own companies.
3. Average annual salary includes bonus and extra payment.

Organizational Chart (As of June 30, 2023)



Subsidiaries and Affiliated Companies (As of June 30, 2023)

Japan

Name	Location	Date of Establishment	Paid-in Capital (Millions)	Scope of Business	Ownership by SuMi TRUST Holdings (%)	Ownership by subsidiaries (%)
Sumitomo Mitsui Trust Bank, Limited	4-1, Marunouchi 1-chome, Chiyoda-ku, Tokyo	July 28, 1925	¥ 342,037	Trust and Banking Business	100.0	—
Sumitomo Mitsui Trust Asset Management Co., Ltd.	1-1, Shibakoen 1-chome, Minato-ku, Tokyo	November 1, 1986	¥ 2,000	Investment Management Business, Investment Advisory and Agency Business	100.0	—
Sumitomo Mitsui Trust Research Institute Co., Ltd.	33-1, Shiba 3-chome, Minato-ku, Tokyo	July 1, 1988	¥ 300	Survey, Research, Consulting, Investment Advisory Business	100.0	—
Trust Base Co., Ltd.*	6-1, Otemachi 1-chome, Chiyoda-ku, Tokyo	April 1, 2021	¥ 100	Survey, Research, Consulting	100.0	—
Nikko Asset Management Co., Ltd.	7-1, Akasaka 9-chome, Minato-ku, Tokyo	December 1, 1959	¥ 17,363	Investment Management Business, Investment Advisory and Agency Business	99.0	0.9
Mutual Fund & Insurance Research Institute	33-1, Shiba 3-chome, Minato-ku, Tokyo	December 1, 2017	¥ 150	Survey, Research, Consulting	88.0	—
UBS SuMi TRUST Wealth Advisory, Ltd.	4-1, Marunouchi 1-chome, Chiyoda-ku, Tokyo	September 25, 2019	¥ 5	Concurrent sales agency services, Financial instruments intermediary services, Banking agency services	50.0	—
UBS SuMi TRUST Wealth Management Co., Ltd.	4-1, Marunouchi 1-chome, Chiyoda-ku, Tokyo	May 1, 2020	¥ 5,165	Securities business, Trust agreement agency services	49.0	—
Custody Bank of Japan, Ltd.	8-12, Harumi 1-chome, Chuo-ku, Tokyo	June 20, 2000	¥ 51,000	Trust and Banking Business	33.3	—

* Planned to be liquidated by the end of 2023

Note: For details concerning subsidiaries and affiliated companies of SuMi TRUST Bank, please refer to page 13.