

Board of Directors and Executive Officers (As of July 1, 2023)

Chairman
Masaru Hashimoto

President (Representative Director)
Kazuya Oyama

Deputy President (Representative Director)
Seiji Iwakuma

Deputy President (Representative Director)
Shigeki Tanaka

Deputy President (Representative Director)
Nobuaki Yamaguchi

Director, Senior Managing Executive Officer
Futoshi Itani

Director, Senior Managing Executive Officer
Yasuyuki Suzuki

Director, Managing Executive Officer
Manatomo Yoneyama

Director, Managing Executive Officer
Atsushi Matsumoto

Director, Managing Executive Officer
Masakatsu Sato

Director, Managing Executive Officer
Riro Sato

Director
Tetsuo Ohkubo

Director
Toru Takakura

Director (External)
Hideki Kanda*

Director (External)
Michiko Achilles*

Director (External)
Kazumi Torii*

Director (External)
Naoaki Mashita*

Director
(Audit and Supervisory Committee member)
Tsutomu Kurai

Director
(Audit and Supervisory Committee member)
Shigenori Ikemura

Director
(Audit and Supervisory Committee member)
(External)
Junko Sasaki*

Director
(Audit and Supervisory Committee member)
(External)
Hidefumi Date*

Director
(Audit and Supervisory Committee member)
(External)
Kazuo Sakakibara*

Deputy Chairman
Kengo Noguchi

Senior Managing Executive Officer
Toshiya Shimobeppu

Senior Managing Executive Officer
Kenji Kaiya

Managing Executive Officer
Keiichi Hamano

Managing Executive Officer
Hideshi Sano

Managing Executive Officer
Yasunaga Matsumoto

Managing Executive Officer
Masahiko Kitajima

Managing Executive Officer
Daisuke Maeda

Managing Executive Officer
Junya Ueda

Managing Executive Officer
Masaya Noda

Managing Executive Officer
Satoshi Kitai

Managing Executive Officer
Tetsuya Hiwatashi

Managing Executive Officer
Takumi Fujisawa

Managing Executive Officer
Nobuhisa Takahashi

Managing Executive Officer
Kazuhiko Kasuya

Managing Executive Officer
Takehiko Iwahara

Managing Executive Officer
Takafumi Arimura

Managing Executive Officer
Kouichi Kato

Managing Executive Officer
Takehiko Sakaue

Managing Executive Officer
Kazuteru Wakao

Managing Executive Officer
Yuki Takada

Managing Executive Officer
Atsushi Ueda

Managing Executive Officer
Junichiro Usui

Executive Officer
Miyo Yajima

Executive Officer
Hitoshi Kotaka

Executive Officer
Shinichi Tao

Executive Officer
Makito Oono

Executive Officer
Masatoshi Yoshikawa

Executive Officer
Hidehiro Miyahara

Executive Officer
Kenji Amihama

Executive Officer
Toru Masuda

Executive Officer
Yuuko Nishigaya

Executive Officer
Natsuki Kitaguchi

Executive Officer
Hiroshi Matsumoto

Executive Officer
Michihiro Ooishi

Executive Officer
Shigeyuki Oouchi

Executive Officer
Kouichi Taguchi

Executive Officer
Makoto Takamura

Executive Officer
Nobuo Murakami

Executive Officer
Hisato Nakano

Executive Officer
Chikako Matsumoto

Executive Officer
Kenichi Fujimura

Executive Officer
Masaya Yamashiro

Executive Officer
Tomoya Hirano

Executive Officer
Hideki Kiya

Executive Officer
Naoki Ishibe

Executive Officer
Hirohiko Doi

Executive Officer
Takahiro Yoshida

Executive Officer
Takahiro Ishige

Executive Officer
Hiroko Konishi

Executive Officer
Hiromu Horiike

Executive Officer
Hirohiko Shiroiwa

Executive Officer
Masanori Watanabe

Executive Officer
Yoshihiko Yanagi

Executive Officer
Toshiro Izumi

Executive Officer
Masaya Wada

Executive Officer
Yasuhiro Takeyama

Executive Officer
Akira Matsuo

Executive Officer
Akira Matsumoto

Executive Officer
Kiwafumi Shimizu

Executive Officer
Morito Matsumura

Executive Officer
Kiyotaka Maita

* External Directors as provided for in Article 2, Item 15 of the Companies Act.
Executive Officers as defined in our internal policy.

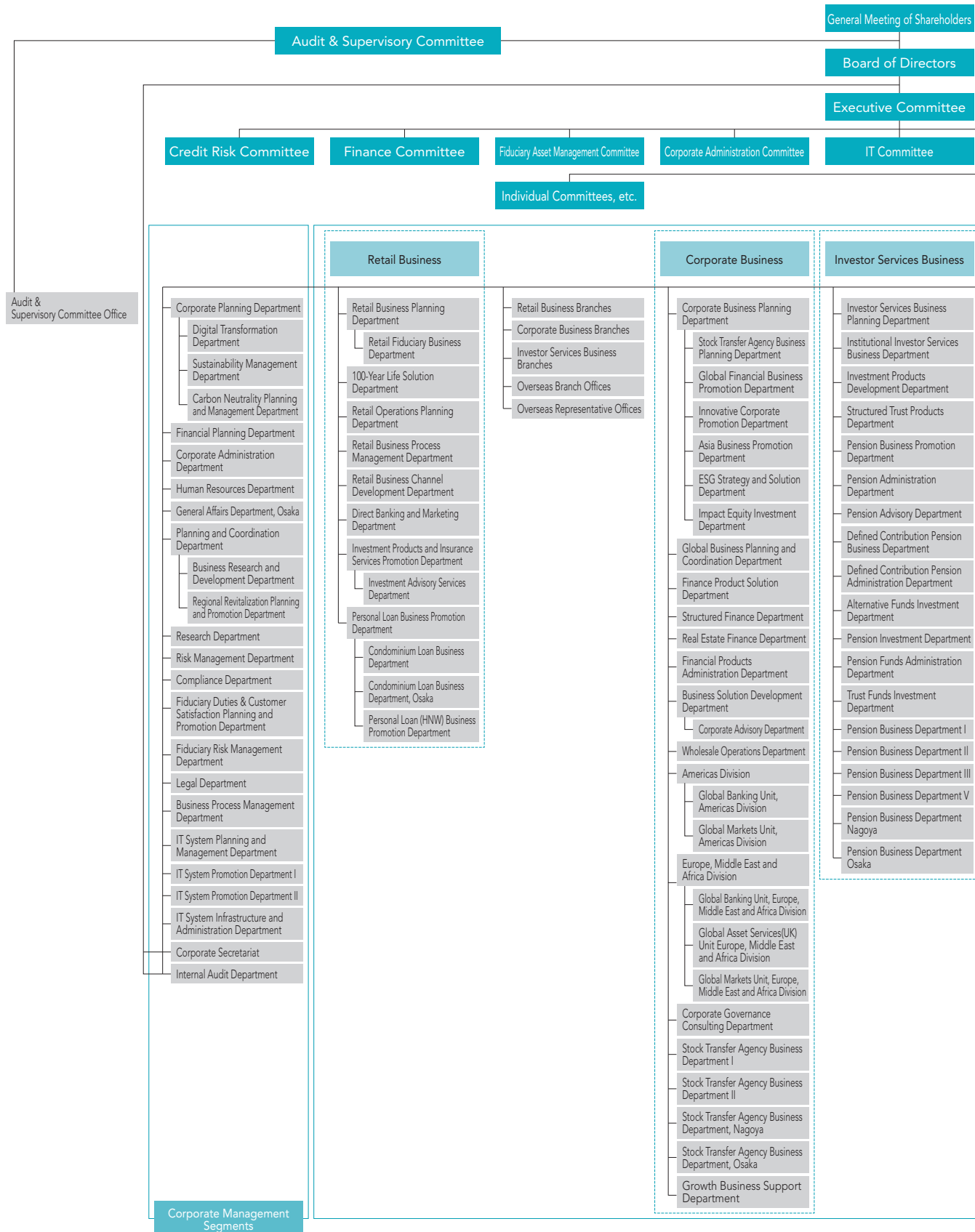
Employees (As of March 31, 2023)

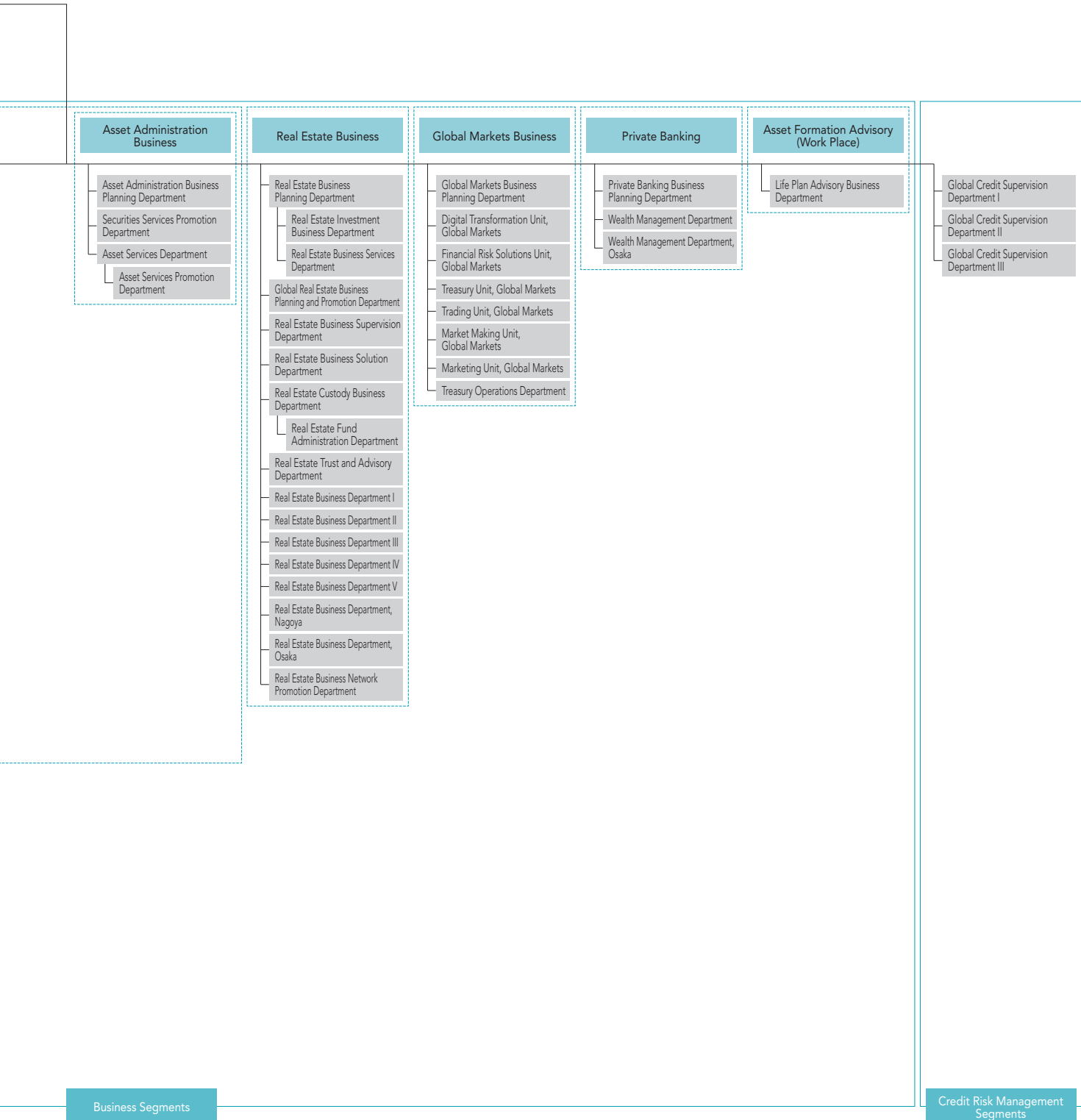
Category	March 31, 2023	March 31, 2022
Number of Employees	13,757	13,608
Average Age	41 years, 8 months	41 years, 7 months
Average Length of Employment	14 years, 6 months	14 years, 3 months
Average Annual Salary	¥7,158 thousand	¥6,956 thousand

Notes: 1. The number of employees indicates total personnel, etc., excluding employees seconded to other companies and temporary and part-time staff.
 2. Average annual salary includes bonus and extra payment.

Organizational Chart (As of June 30, 2023)

Corporate Data

Financial Data/
Sumitomo Mitsui Trust Holdings, Inc.Financial Data/
Sumitomo Mitsui Trust Bank, LimitedBasel III Disclosure Data/
Sumitomo Mitsui Trust Holdings, Inc.Basel III Disclosure Data/
Sumitomo Mitsui Trust Bank, Limited



Branches (As of June 30, 2023)

... These branches house two sales outlets under one roof, a “branch-in-a-branch” method.

Hokkaido, Tohoku

Sapporo Branch
Sapporo-Chuo Branch
 1, Kita 2-jo Nishi 4-chome, Chuo-ku, Sapporo,
 Hokkaido 060-0002, Japan

Sendai Branch
Sendai-Aoba Branch
 1-7, Chuo 2-chome, Aoba-ku, Sendai,
 Miyagi 980-0021, Japan

Tokyo

Tokyo Business Department

4-1, Marunouchi 1-chome, Chiyoda-ku,
 Tokyo 100-8233, Japan

Nihonbashi Business Department

Tokyo-Chuo Branch
 1-1, Nihonbashi-muromachi 2-chome, Chuo-ku,
 Tokyo 103-0022, Japan

Consulting Plaza Shimbashi (Shimbashi Sub-Branch, Tokyo Business Department)

20-1, Shimbashi 2-chome, Minato-ku,
 Tokyo 105-0004, Japan

Toranomon Consulting Office

**(Toranomon Sub-Branch,
 Tokyo Business Department)**
 7-1, Nishi Shimbashi 1-chome, Minato-ku,
 Tokyo 105-0003, Japan

Shiba Business Department

33-1, Shiba 3-chome, Minato-ku,
 Tokyo 105-8574, Japan

Shinjuku-Nishiguchi Branch

1-4, Nishi Shinjuku 1-chome, Shinjuku-ku,
 Tokyo 160-0023, Japan

Shinjuku Branch

26-11, Shinjuku 3-chome, Shinjuku-ku,
 Tokyo 160-0022, Japan

Ueno Branch

Ueno-Chuo Branch
 19-10, Ueno 1-chome, Taito-ku,
 Tokyo 110-0005, Japan

Meguro Branch

25-5, Kamiosaki 2-chome, Shinagawa-ku,
 Tokyo 141-0021, Japan

Omori Branch

1-1, Sanno 2-chome, Ota-ku,
 Tokyo 143-0023, Japan

Sangenjaya Branch

1-1, Taishido 4-chome, Setagaya-ku,
 Tokyo 154-0004, Japan

Futako-Tamagawa Branch

22-12, Tamagawa 2-chome, Setagaya-ku,
 Tokyo 158-0094, Japan

Consulting Plaza Seijo (Seijo Sub-Branch, Shinjuku-Nishiguchi Branch)

5-34, Seijo 6-chome, Setagaya-ku,
 Tokyo 157-0066, Japan

Consulting Plaza Chofu (Chofu Sub-Branch, Shinjuku-Nishiguchi Branch)

48-26, Kojima-cho 2-chome, Chofu,
 Tokyo 182-0026, Japan

Shibuya Branch

Shibuya-Chuo Branch
 2-3, Dogenzaka 1-chome, Shibuya-ku,
 Tokyo 150-0043, Japan

Shibuya Square A Building Sub-branch of Shibuya Branch

Shibuya Square A Building Sub-branch of Shibuya-Chuo Branch

9-5, Dogenzaka 1-chome, Shibuya-ku,
 Tokyo 150-0043, Japan

Jiyugaoka Branch

10-20, Jiyugaoka 2-chome, Meguro-ku,
 Tokyo 152-0035, Japan

Nakano Branch

62-5, Nakano 5-chome, Nakano-ku,
 Tokyo 164-0001, Japan

Ogikubo Branch

17-1, Kamiogi 1-chome, Sugiyama-ku,
 Tokyo 167-0043, Japan

Ikebukuro Branch

Ikebukuro-Higashiguchi Branch
 41-7, Higashi Ikebukuro 1-chome, Toshima-ku,
 Tokyo 170-0013, Japan

Shakujii Branch

14-1, Shakujii-cho 2-chome, Nerima-ku,
 Tokyo 177-0041, Japan

Kichijoji Branch

Kichijoji-Chuo Branch
 2-15, Kichijoji Hon-cho 2-chome, Musashino,
 Tokyo 180-0004, Japan

Koganei Branch

10-1, Hon-cho 5-chome, Koganei,
 Tokyo 184-0004, Japan

Tachikawa Branch

Tachikawa-Kitaguchi Branch
 6-1, Akebono-cho 2-chome, Tachikawa,
 Tokyo 190-0012, Japan

Hachioji Branch

Hachioji-Ekimae Branch
 9-1, Asahi-cho, Hachioji,
 Tokyo 192-0083, Japan

Machida Branch

3-4, Haramachida 6-chome, Machida,
 Tokyo 194-0013, Japan

Tama-Sakuragaoka Branch

1-5, Sekido 1-chome, Tama,
 Tokyo 206-0011, Japan

Consulting Plaza Seiseki (Seiseki-Sakuragaoka Sub-Branch, Tama-Sakuragaoka Branch)

7-5, Sekido 1-chome, Tama,
 Tokyo 206-0011, Japan

Consulting Plaza Tama-Center (Tama-Center Sub-Branch, Tama-Sakuragaoka Branch)

44, Ochiai 1-chome, Tama,
 Tokyo 206-0033, Japan

Kanto

Urawa Branch

12-1, Takasago 1-chome, Urawa-ku,
Saitama 330-0063, Japan

Omiya Branch**Omiya-Ekimae Branch**

32, Daimon-cho 1-chome, Omiya-ku,
Saitama 330-8511, Japan

Tokorozawa Branch**Tokorozawa-Ekimae Branch**

3-5, Hiyoshi-cho, Tokorozawa,
Saitama 359-8691, Japan

Koshigaya Branch

14-22, Yayoi-cho, Koshigaya,
Saitama 343-0816, Japan

Sugito Branch

13-12, Sugito 2-chome, Sugito-machi, Kitakatsushika-gun,
Saitama 345-0036, Japan

Chiba Branch**Chiba-Ekimae Branch**

1-16, Fujimi 1-chome, Chuo-ku,
Chiba 260-0015, Japan

Ichikawa Branch

7-13, Ichikawa 1-chome, Ichikawa,
Chiba 272-0034, Japan

Funabashi Branch

3-1, Hon-cho 1-chome, Funabashi,
Chiba 273-0005, Japan

Tsudanuma Branch

14-5, Maebara Nishi 2-chome, Funabashi,
Chiba 274-0825, Japan

Matsudo Branch

2-1, Hon-cho, Matsudo,
Chiba 271-0091, Japan

Kashiwa Branch

2-1, Kashiwa 4-chome, Kashiwa,
Chiba 277-0005, Japan

Yachiyo Branch

3-1, Yachiyodai Minami 1-chome, Yachiyo,
Chiba 276-0033, Japan

Yokohamaeki-Nishiguchi Branch**Yokohama Branch**

6-31, Minami Saiwai 1-chome, Nishi-ku, Yokohama,
Kanagawa 220-0005, Japan

Yokohama Housing Loan Center Sub-Branch,**Yokohamaeki-Nishiguchi Branch**

6-1, Kita Saiwai 1-chome, Nishi-ku, Yokohama,
Kanagawa 220-0004, Japan

Futamatagawa Branch

3-2, Futamatagawa 1-chome, Asahi-ku, Yokohama,
Kanagawa 241-0821, Japan

Tama-Plaza Branch

15-8, Utsukushigaoka 2-chome, Aoba-ku, Yokohama,
Kanagawa 225-0002, Japan

Aobadai Branch

9-2, Aobadai 2-chome, Aoba-ku, Yokohama,
Kanagawa 227-0062, Japan

Consulting Plaza Kohoku**(Kohoku Sub-Branch, Tama-Plaza Branch)**

1-3, Nakagawa Chuo 1-chome, Tsuzuki-ku, Yokohama,
Kanagawa 224-0003, Japan

Konandai Branch

15-2-102, Konandai 3-chome, Konan-ku, Yokohama,
Kanagawa 234-0054, Japan

Kamiooka Branch

18-5, Kamiooka Nishi 1-chome, Konan-ku, Yokohama,
Kanagawa 233-0002, Japan

Consulting Plaza Totsuka**(Totsuka Sub-Branch, Yokohamaeki-Nishiguchi Branch)**

16-1, Totsuka-cho, Totsuka-ku, Yokohama,
Kanagawa 244-0003, Japan

Kawasaki Branch

3-1, Ekimae Hon-cho, Kawasaki-ku, Kawasaki,
Kanagawa 210-0007, Japan

Shin-Yurigaoka Branch

5-3, Kamiasao 1-chome, Asao-ku, Kawasaki,
Kanagawa 215-0021, Japan

Yokosuka Branch

3, Odaki-cho 2-chome, Yokosuka,
Kanagawa 238-0008, Japan

Fujisawa Branch**Fujisawa-Chuo Branch**

21-1-101, Minami Fujisawa, Fujisawa,
Kanagawa 251-0055, Japan

Sagami-Ono Branch

13-7, Sagamiono 3-chome, Minami-ku, Sagamihara,
Kanagawa 252-0303, Japan

Atsugi Branch

5-14, Naka-cho 3-chome, Atsugi,
Kanagawa 243-0018, Japan

Odawara Branch

2-12, Sakae-cho 1-chome, Odawara,
Kanagawa 250-0011, Japan

Utsunomiya Branch

4-12, Hon-cho, Utsunomiya,
Tochigi 320-0033, Japan

Maebashi Branch

2-12, Hon-machi 2-chome, Maebashi,
Gunma 371-0023, Japan

Koshinetsu, Hokuriku

Kofu Branch

17-14, Marunouchi 1-chome, Kofu,
Yamanashi 400-0031, Japan

Niigata Branch

Niigata-Chuo Branch

1178-1, Kamiokawa-maedori Rokuban-cho, Chuo-ku,
Niigata 951-8068, Japan

Toyama Branch

1-36, Sakura-machi 1-chome, Toyama 930-0003, Japan

Kanazawa Branch

Kanazawa-Chuo Branch

1-18, Kami Tsutsumi-cho, Kanazawa,
Ishikawa 920-0869, Japan

Fukui Branch

7-1, Chuo 1-chome,
Fukui 910-0006, Japan

Tokai

Nagoya Business Department

Nagoya-Sakae Branch

15-33, Sakae 3-chome, Naka-ku, Nagoya,
Aichi 460-0008, Japan

Kanayamabashi Branch

15-10, Kanayama 1-chome, Naka-ku, Nagoya,
Aichi 460-0022, Japan

Nagoya-Ekimae Branch

Meieki-Minami Branch

26-8, Meieki 3-chome, Nakamura-ku, Nagoya,
Aichi 450-0002, Japan

Hoshigaoka Branch

106, Inoue-cho, Chikusa-ku, Nagoya,
Aichi 464-0026, Japan

Ichinomiya Branch

7-15, Sakae 3-chome, Ichinomiya,
Aichi 491-0858, Japan

Okazaki Branch

16, Koseidori-Nishi 3-chome, Okazaki,
Aichi 444-0059, Japan

Toyohashi Branch

135, Ekimaeodori 1-chome, Toyohashi,
Aichi 440-0888, Japan

Shizuoka Branch

Shizuoka-Chuo Branch

3-10, Koya-machi, Aoi-ku,
Shizuoka 420-0852, Japan

Numazu Branch

4-2, Ote-machi 5-chome, Numazu,
Shizuoka 410-0801, Japan

Gifu Branch

3, Nagazumi-cho 2-chome,
Gifu 500-8175, Japan

Yokkaichi Branch

5-4, Suwa-cho, Yokkaichi,
Mie 510-0085, Japan

Kinki

Osaka Business Department

Osaka-Chuo Branch

5-33, Kitahama 4-chome, Chuo-ku,
Osaka 540-8639, Japan

Umeda Branch

Hankyu-Umeda Branch

8-47, Kakuda-cho, Kita-ku,
Osaka 530-0017, Japan

Namba Branch

Namba-Chuo Branch

1-60, Namba 5-chome, Chuo-ku,
Osaka 542-0076, Japan

Abenobashi Branch

Abeno Branch

6-1, Abenosuji 1-chome, Abeno-ku,
Osaka 545-0052, Japan

Sakai Branch

59-2, Mikunigaoka Miyuki-dori, Sakai-ku, Sakai,
Osaka 590-0028, Japan

Consulting Plaza Izumigaoka

(Semboku Sub-Branch, Sakai Branch)

2-3, Chayamadai 1-chome, Minami-ku, Sakai,
Osaka 590-0115, Japan

Yao Branch

6-8, Higashi Hon-machi 3-chome, Yao,
Osaka 581-0004, Japan

Hirakata Branch

Keihan-Hirakata Branch

13-20, Oka Higashi-cho, Hirakata,
Osaka 573-0032, Japan

Takatsuki Branch

5-20, Konya-machi, Takatsuki,
Osaka 569-0804, Japan

Ibaraki Branch

2-30, Futaba-cho, Ibaraki,
Osaka 567-0829, Japan

Toyonaka Branch

1-1, Hon-machi 1-chome, Toyonaka,
Osaka 560-0021, Japan

Senri-Chuo Branch

1-3, Shinsenri Higashi-machi 1-chome, Toyonaka,
Osaka 560-0082, Japan

Ikeda Branch

1-1-134, Kureha-cho, Ikeda,
Osaka 563-0048, Japan

Chugoku, Shikoku

Kobe Branch

Kobe-Sannomiya Branch
1-6, Goko-dori 8-chome, Chuo-ku, Kobe,
Hyogo 651-0087, Japan

Consulting Plaza Seishin-Chuo (Seishin-Chuo Sub-Branch, Kobe Branch)

9-4, Kojidai 5-chome, Nishi-ku, Kobe,
Hyogo 651-2273, Japan

Tsukaguchi Branch

15-1, Tsukaguchi-cho 1-chome, Amagasaki,
Hyogo 661-0002, Japan

Nishinomiya Branch

5-39, Takamatsu-cho, Nishinomiya,
Hyogo 663-8204, Japan

Ashiya Branch

5-2, Funado-cho, Ashiya,
Hyogo 659-0093, Japan

Kawanishi Branch

7-18, Chuo-cho, Kawanishi,
Hyogo 666-0016, Japan

Akashi Branch

5-28, Higashinakano-machi, Akashi,
Hyogo 673-0886, Japan

Himeji Branch

252, Ekimae-cho, Himeji,
Hyogo 670-0927, Japan

Kyoto Branch

Kyoto-Shijo Branch
612, Karasuma-dori Shijo-sagaru Suiginya-cho, Shimogyo-ku,
Kyoto 600-8411, Japan

Otsu Branch

3-10, Umebayashi 1-chome, Otsu,
Shiga 520-0051, Japan

Nara-Saidaiji Branch

1-50, Saidaiji Higashi-machi 2-chome,
Nara 631-0821, Japan

Consulting Plaza Gakuenmae (Gakuenmae Sub-Branch, Nara-Saidaiji Branch)

8-11, Gakuen Kita 1-chome,
Nara 631-0036, Japan

Wakayama Branch

3-17, Higashi Kuramae-cho,
Wakayama 640-8203, Japan

Tottori Branch

103, Ima-machi 1-chome,
Tottori 680-0822, Japan

Okayama Branch

Okayama-Chuo Branch
1-5, Ekimoto-machi, Kita-ku,
Okayama 700-0024, Japan

Hiroshima Branch

Hiroshima-Chuo Branch
2-22, Kamiya-cho 1-chome, Naka-ku,
Hiroshima 730-0031, Japan

Fukuyama Branch

15-1, Moto-machi, Fukuyama,
Hiroshima 720-0063, Japan

Yamaguchi-Hofu Branch

4-24, Ebisu-machi 1-chome, Hofu,
Yamaguchi 747-0036, Japan

Takamatsu Branch

9-4, Konya-machi, Takamatsu,
Kagawa 760-0027, Japan

Matsuyama Branch

11-1, Sanban-cho 4-chome, Matsuyama,
Ehime 790-0003, Japan

Kyushu

Fukuoka Branch

Fukuoka-Tenjin Branch
12-1, Tenjin 2-chome, Chuo-ku,
Fukuoka 810-0001, Japan

Kita-Kyushu Branch

1-5, Kaji-machi 1-chome, Kokurakita-ku, Kita-Kyushu,
Fukuoka 802-0004, Japan

Saga Branch

3-2, Matsubara 1-chome,
Saga 840-0831, Japan

Kumamoto Branch

Kumamoto-Chuo Branch
2-5, Tetori Hon-cho, Chuo-ku,
Kumamoto 860-0808, Japan

Oita Branch

3-23, Chuo-machi 1-chome,
Oita 870-0035, Japan

Kagoshima Branch

7-8-101, Kinsei-cho,
Kagoshima 892-0828, Japan

Overseas Network

Branch

New York Branch

1251 Avenue of the Americas, New York,
NY 10020, U.S.A.

London Branch

155 Bishopsgate, London EC2M 3XU, U.K.

Singapore Branch

One Raffles Quay, #24-01 North Tower,
Singapore 048583

Shanghai Branch

50F Jin Mao Tower, 88 Shiji Dadao Pudong New Area,
Shanghai 200121, People's Republic of China

Hong Kong Branch

25/F, AIA Central, 1 Connaught Road, Central,
Hong Kong

Representative Office

Beijing Representative Office (Banking business)

Room 2008, Building No. 2,
No. 26, Jianguomenwai Dajie, Chaoyang District,
Beijing 100022, People's Republic of China

Beijing Representative Office (Securities business)

Room 5011, 5th Floor, Chang Fu Gong Office Building,
No. 26, Jianguomenwai Dajie, Chaoyang District,
Beijing 100022, People's Republic of China

Jakarta Representative Office

20th Floor, Summitas I,
Jl. Jend. Sudirman, Kaveling 61-62,
Jakarta 12190, Indonesia

Seoul Representative Office

20th Floor, Booyoung Taepyoung Building, 55,
Sejong-daero, Jung-gu, Seoul 04513, Korea

Sydney Representative Office

Suite 3, Level 39, 259 George Street,
Sydney NSW 2000, Australia

Number of Contracted Trust Agencies* (As of March 31, 2023)

* Trust Agency is a collective term that refers to trust contract agencies under the Trust Business Act as well as agencies concurrently engaged in trust business under Article 1 of the Act on Provision, etc. of Trust Business by Financial Institutions.

Type		Number of Agencies				
		Trust Contract Agencies	Agencies Engaged in Concurrent Business			
			Stock Transfer Agency Service	Service Related to Wills	Solicitation for National Pension Fund	Discretionary Investment Business
Banks, Shinkin Banks, etc.	110	60	41	76	51	1
Regional Banks	44	37	29	32	15	1
Second Regional Banks	15	9	6	12	9	—
Shinkin Central Bank, Shinkin Banks	39	12	3	24	27	—
Credit Union	8	—	—	8	—	—
Shoko Chukin Bank	1	1	—	—	—	—
City Banks, etc.	3	1	3	—	—	—
Securities Firms	7	1	4	6	—	—
Life Insurers and Business Enterprises	11	1	1	10	1	—
Total	128	62	46	92	52	1

Bank Service Agency (As of March 31, 2023)

Trade Name of Bank Service Agency	Business Offices, etc. Operating Bank Agency Service
SBI Sumishin Net Bank, Ltd.	Head Office, East Japan Operation Center, Shinjuku Business Headquarters, Ichigo Branch, Budou Branch, Mikan Branch, Lemon Branch, Ringo Branch, Banana Branch, Melon Branch, Kiwi Branch, Iruka Branch (12 Branches)
UBS AG (Bank) Tokyo Branch	Marunouchi Sub-branch, Osaka Sub-branch, Nagoya Sub-branch (3 Branches)
Sumitomo Mitsui Trust Life Partners Co., Ltd.	Consulting Plaza for Peaceful 100-Year life Shinjuku office, Consulting Plaza for Peaceful 100-Year life Nagoya office (2 Branches)

Subsidiaries and Affiliated Companies (As of June 30, 2023)

Japan

Name	Location	Date of Establishment	Paid-in Capital (Millions)	Scope of Business	Ownership by SuMi TRUST Bank (%)	Ownership by subsidiaries (%)
Tokyo Securities Transfer Agent Co., Ltd.	11, Kanda-nishikicho 3-chome, Chiyoda-ku, Tokyo	November 1, 1962	¥ 50	Stock Transfer Agency Services	100.0	—
Sumitomo Mitsui Trust Club Co., Ltd.	8-10, Harumi 1-chome, Chuo-ku, Tokyo	April 2, 1977	¥ 100	Credit Card Business	100.0	—
Sumitomo Mitsui Trust Guarantee Co., Ltd.	33-1, Shiba 3-chome, Minato-ku, Tokyo	July 10, 1978	¥ 301	Housing Loan Guaranty Business	100.0	—
Sumitomo Mitsui Trust General Service Co., Ltd.	33-1, Shiba 3-chome, Minato-ku, Tokyo	April 2, 1988	¥ 100	Property Leasing and Management Business	100.0	—
Sumitomo Mitsui Trust Wealth Partners Co., Ltd.	33-1, Shiba 3-chome, Minato-ku, Tokyo	November 6, 1989	¥ 155	Consulting Business	100.0	—
Sumitomo Mitsui Trust Business Service Co., Ltd.	33-1, Shiba 3-chome, Minato-ku, Tokyo	May 24, 1990	¥ 100	Back Office Services, Temporary Staffing Business, Outplacement Agency	100.0	—
Sumitomo Mitsui Trust Loan & Finance Co., Ltd.	20-1, Shimbashi 2-chome, Minato-ku, Tokyo	January 22, 1992	¥ 6,000	Money Lending Business	100.0	—
Sumitomo Mitsui Trust TA Solution Co., Ltd.	8-4, Izumi 2-chome, Suginami-ku, Tokyo	July 1, 1998	¥ 2,005	IT, Calculation Outsourcing Business	100.0	—
J-Eurus IR Co., Ltd.	3-1, Marunouchi 3-chome, Chiyoda-ku, Tokyo	December 27, 2000	¥ 10	Consulting Business	100.0	—
Sumitomo Mitsui Trust Real Estate Investment Management Co., Ltd.	11-1, Kanda-nishikicho 3-chome, Chiyoda-ku, Tokyo	November 7, 2005	¥ 300	Investment Management, Investment Advisory	100.0	—
Sumitomo Mitsui Trust Career Partners Co., Ltd.	33-1, Shiba 3-chome, Minato-ku, Tokyo	April 3, 2006	¥ 100	Training Programs, Personnel-related Services	100.0	—
Sumitomo Mitsui Trust Life Partners Co., Ltd.	11-1, Kanda-nishikicho 3-chome, Chiyoda-ku, Tokyo	January 28, 2019	¥ 100	Insurance Agency Business, Banking Agency Services, Financial instruments intermediary services	100.0	—
Japan Extensive Infrastructure, Limited	4-1, Marunouchi 1-chome, Chiyoda-ku, Tokyo	February 21, 2023	¥ 200	Investment Advisory and Agency Business	90.0	—
Japan Securities Agents, Ltd.	2-4, Nihonbashi-kayabacho 1-chome, Chuo-ku, Tokyo	September 13, 1950	¥ 500	Stock Transfer Agency Services	85.1	—
Sumitomo Mitsui Trust Panasonic Finance Co., Ltd.	2-3, Shibaura 1-chome, Minato-ku, Tokyo	February 27, 1967	¥ 25,584	General Leasing, Installment Purchase Services, Credit Card Business	84.8	—
Sumishin Guaranty Company Limited	33-1, Shiba 3-chome, Minato-ku, Tokyo	August 25, 1977	¥ 300	Loan Guarantee Business	—	100.0
Sumitomo Mitsui Trust Card Co., Ltd.	33-1, Shiba 3-chome, Minato-ku, Tokyo	June 24, 1983	¥ 100	Credit Card Business	50.0	50.0
Sumitomo Mitsui Trust Systems & Services Co., Ltd.	1-10, Nikko-cho, Fuchu, Tokyo	February 12, 1973	¥ 100	System Development and Operation Management Services	44.4	55.5
Sumitomo Mitsui Trust Investment Co., Ltd.	33-1, Shiba 3-chome, Minato-ku, Tokyo	March 22, 2000	¥ 100	Equity Investment Business	40.0	60.0
Sumitomo Mitsui Trust Realty Co., Ltd.	11-1, Kanda-nishikicho 3-chome, Chiyoda-ku, Tokyo	January 24, 1986	¥ 300	Real Estate Brokerage Business	5.0	95.0
Japan Pension Operation Service, Ltd.	24-1, Nihonbashi-hakozakicho, Chuo-ku, Tokyo	December 21, 2004	¥ 100	Calculation of Pension Payments, etc., Clerical Outsourcing Business	50.0	—
Japan Stockholders Data Service Company, Limited	8-4, Izumi 2-chome, Suginami-ku, Tokyo	April 1, 2008	¥ 2,000	Stock Transfer Outsourcing Business	50.0	—
Trust Capital Mezzanine LLC	5-1, Nihonbashi-muromachi 4-chome, Chuo-ku, Tokyo	January 21, 2020	¥ 60	Equity Investment Business	45.0	—
HR One Corporation	5-12, Tsukiji 5-chome, Chuo-ku, Tokyo	May 20, 2002	¥ 603	HR-related Services Business	37.3	—
MFA, Inc.	10-5, Toranomon 1-chome, Minato-ku, Tokyo	March 1, 2022	¥ 60	Consulting Business	36.0	—
SBI Sumishin Net Bank, Ltd.	6-1, Roppongi 1-chome, Minato-ku, Tokyo	June 3, 1986	¥ 31,000	Banking Business	34.1	—
JP Asset Management Co., Ltd.	11-2, Nihonbashi-ningyocho 1-chome, Chuo-ku, Tokyo	August 18, 2015	¥ 500	Investment Management	30.0	—
Board Advisors Japan, Inc.	5-1, Otemachi 1-chome, Chiyoda-ku, Tokyo	November 9, 2018	¥ 102	Consulting, Recruitment Agency Business	25.4	—
Japan Management Succession Support Co. Ltd.	2-1, Kasumigaseki 3-chome, Chiyoda-ku, Tokyo	April 16, 2015	¥ 489	M&A Consulting, Intermediary and Advisory Services	23.8	—
Enex Asset Management Co., Ltd.	2-5, Kasumigaseki 3-chome, Chiyoda-ku, Tokyo	August 19, 2013	¥ 50	Investment Corporation, Asset Management Business	22.4	—
Sky Ocean Asset Management Co., Ltd.	1-1, Minatomirai 3-chome, Nishi-ku, Yokohama, Kanagawa	November 25, 2014	¥ 300	Investment Management	21.0	—
Mitsui & Co., Logistics Partners Ltd.	2-1, Nishi-kanda 3-chome, Chiyoda-ku, Tokyo	July 13, 2004	¥ 150	Investment Corporation, Asset Management Business	20.0	—
Cardif Assurance Vie (Japan)	20-1, Sakuragaoka-cho, Shibuya-ku, Tokyo	July 3, 2017	¥ 20,600	Life Insurance Business	20.0	—

Overseas

Name	Location	Date of Establishment	Paid-in Capital (Millions)	Scope of Business	Ownership by SuMi TRUST Bank (%)	Ownership by subsidiaries (%)
Sumitomo Mitsui Trust (Hong Kong) Limited	25/F, AIA Central, 1 Connaught Road, Central, Hong Kong	July 4, 1978	\$ 45	Securities Business	100.0	—
Sumitomo Mitsui Trust Bank (Luxembourg) S.A.	2, rue Petermelchen, L-2370, Howald, Grand Duchy of Luxembourg	April 22, 1985	\$ 30	Trust, Banking, Securities Businesses	100.0	—
Sumitomo Mitsui Trust Bank (U.S.A.) Limited	111 River Street, Hoboken, NJ 07030, U.S.A.	May 20, 2002	\$ 56	Banking, Trust Businesses	100.0	—
Sumitomo Mitsui Trust (Ireland) Limited	Block 5, Harcourt Centre, Harcourt Road, Dublin 2, Ireland	June 1, 2004	€ 75.87	Trust Business	100.0	—
SuMi TRUST Consulting (Beijing) Co., Ltd	Room 7009, Building No. 2, No. 26, Janguomenwai Dajie, Chaoyang District, Beijing 100022, People's Republic of China	February 1, 2021	RMB 4	Consulting Business	100.0	—
Sumitomo Mitsui Trust Bank (Thai) Public Company Limited	32nd Floor, Sathorn Square Office Tower, 98 North Sathorn Road, Silom, Bangrak, Bangkok 10500, Thailand	July 7, 2014	THB 20,000	Banking Business	99.9	0.0
BIDV-SuMi TRUST Leasing Co., Ltd.	23rd Floor, TNR Tower, 54A Nguyen Chi Thanh, Dong Da, Hanoi, Vietnam	September 4, 1998	VND 895,600	Leasing Business in Vietnam (including sales finance lease)	49.0	—
Zijin Trust Co., Ltd.	30th Floor, Zifeng Tower, 2 Zhongshan Road(N), Gulou District, Nanjing, Jiangsu Province, 210008, People's Republic of China	September 25, 1992	RMB 3,200	Trust Business	20.0	—
Nanjing Zijin Financial Leasing Co., Ltd.	9th Floor, 309, Hanzhongmendajie, Gulou District, Nanjing, Jiangsu Province, 210036, People's Republic of China	May 20, 2016	RMB 600	Leasing Business	15.0	5.0
Midwest Railcar Corporation	855 South Arbor Vitae Edwardsville, IL 62025, U.S.A.	December 31, 1998	\$ 0.47	Freight Railcar Operating Leasing Business in North America	—	100.0*

* The ownership by subsidiaries is the ownership ratio held by the U.S.-based company in which SuMi TRUST Group, such as SuMi TRUST Bank and SuMi TRUST Bank's subsidiaries, has a 50.0% stake.