

To whom it may concern

February 15, 2011
Chuo Mitsui Trust Holdings, Inc.
(Securities Code: 8309 TSE, OSE, NSE)
The Sumitomo Trust and Banking Co., Ltd.
(Securities Code: 8403 TSE, OSE)

**Notice regarding Corporate Organization of
Sumitomo Mitsui Trust Holdings, Inc.**

Chuo Mitsui Trust Holdings, Inc. (“CMTH”; President: Kazuo Tanabe) and The Sumitomo Trust and Banking Co., Ltd. (President: Hitoshi Tsunekage) hereby announce that they have agreed on the corporate organization of Sumitomo Mitsui Trust Holdings, Inc. (“SMTH”) which is planned to become the new holding company as of April 1, 2011 (current CMTH will change its corporate name on the same day) upon the planned Management Integration of the two groups.

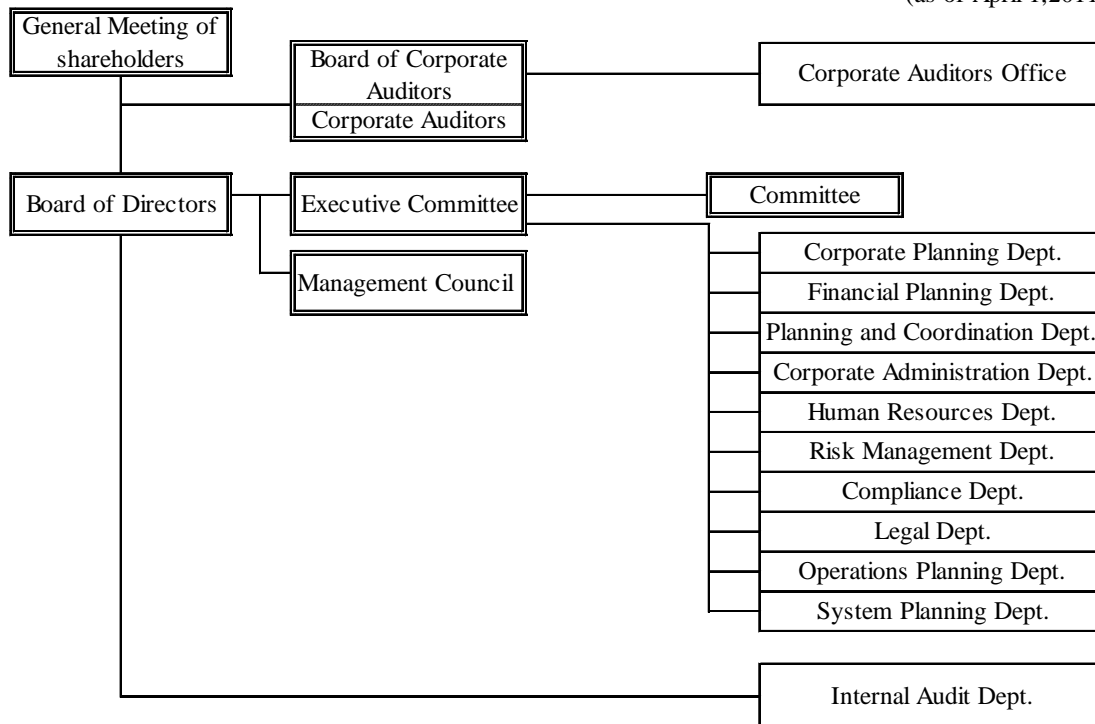
The Management Integration is subject to the approvals of the relevant authorities.

SMTH focuses on the management of business operations, and sets the followings as its key functions, as described in “Final Agreement on the Management Integration of Chuo Mitsui Trust Group and The Sumitomo Trust and Banking Group” released on August 24, 2010:(i) Formulating group management strategy, (ii) Allocation of management resources, (iii) Monitoring administration of business activities, (iv) Supervising risk management, (v) Supervising compliance management and (vi) Managing internal auditing.

Corporate organization based on these key functions is as described below.

Corporate Organization of SMTH

(as of April 1, 2011)



(End)

For further information, please contact:

Chuo Mitsui Trust Holdings, Inc.

IR Group, Financial Planning Department

+81-3-5232-8828

The Sumitomo Trust and Banking Co., Ltd.

IR Office, Financial Management Department

+81-3-3286-8354