

Sumitomo Mitsui Trust Group's

Basic Policy on Social Responsibility

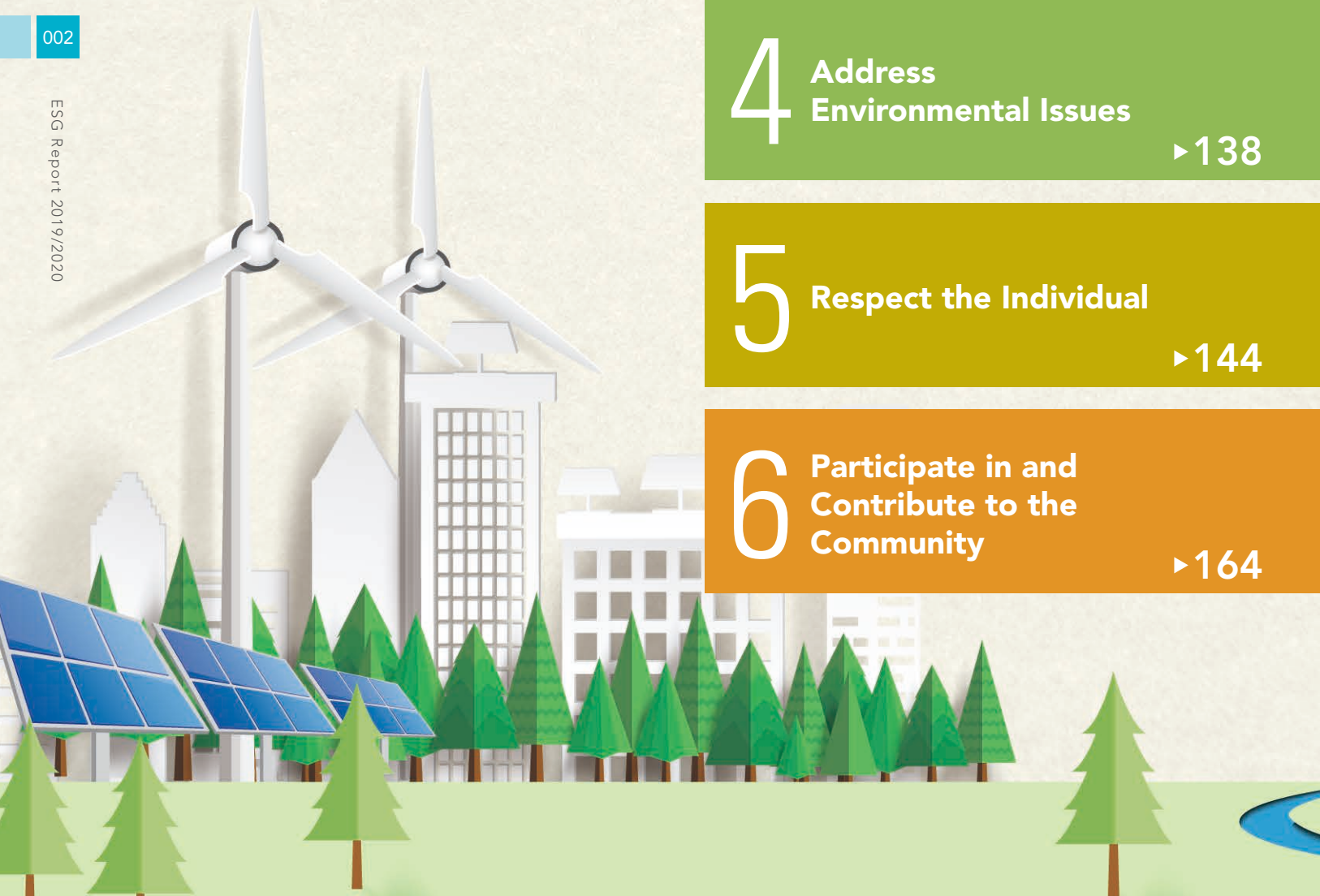
(Sustainability Policy)

At Sumitomo Mitsui Trust Group, based on our Management Principles ("Mission"), our Ideal Model ("Vision") and our Codes of Conduct ("Value"), we respect dialogue with all stakeholders, such as clients, shareholders, investors, employees, business partners, local communities, NPOs, government authorities and international institutions, and play an active role in building a sustainable society.

Sumitomo Mitsui Trust Holdings, Inc.

002

ESG Report 2019/2020



1 **Contribute to Solving Social and Environmental Problems through Business**
▶010

2 **Serve Clients with Sincerity**
▶082

3 **Earn the Trust of Society**
▶096

4 **Address Environmental Issues**
▶138

5 **Respect the Individual**
▶144

6 **Participate in and Contribute to the Community**
▶164

Contents



Sustainability Policy 1

We aim to enhance our earnings by developing and marketing products and services that help address social and environmental problems.



- 004 Top Commitment
- 006 Materiality Management for Creating Shared Value at the SuMi TRUST Group
- 008 Initiatives for Sustainable Development Goals (SDGs) of the SuMi TRUST Group



Sustainability Policy 2

A basic premise of corporate activities is obtaining the trust of customers. We work to improve client protection and customer satisfaction and ensure product reliability.



- 012 Signatory to the Principles for Responsible Banking
- 016 Total Solutions for Solving Clients' ESG/SDGs Challenges
- 024 Addressing Climate Change Using Our Financial Capabilities
- 040 Natural Capital related Initiatives Using Our Financial Capabilities
- 046 Addressing the Issues of a Super-Aging Society by Using Our Financial Functions
- 057 ESG-themed Initiatives in Our Asset Management Businesses
- 067 ESG-themed Initiatives in Our Real Estate Businesses
- 076 Financial Inclusion Initiatives
- 081 Trust Future Forum



Sustainability Policy 3

We are bolstering the foundations of corporate value creation such as corporate governance, CSR, compliance, and risk management.



- 083 Initiatives to Earn the Trust of Clients
- 083 Initiatives Aimed at Becoming Our Customer's Best Partners
- 089 Initiatives Related to Fiduciary Duties
- 093 Client Protection Management



Sustainability Policy 4

We are working to reduce our environmental burden with the aim of building a circular society where nature co-exists with human communities.



- 097 Corporate Governance
- 112 Compliance and Conducting Business Activities Fairly
- 119 Compliance with International Financial Regulations
- 120 Risk Management
- 128 Information Security Risk Management
- 129 Consideration for Borrowers' Environmental and Social Impact
- 132 CSR Procurement (Procurement that Considers the Environment and Society)
- 135 Multi-stakeholder Partnership



Sustainability Policy 5

We value people that form communities. We create workplace environments that enable people to achieve peak form in putting their capabilities to use.



- 139 Environmental Burden Reduction Measures



Sustainability Policy 6

We believe sound local communities underpin a healthy client base. We contribute and participate in the communities where we do business through our local "With You" activities.



- 145 Enhancing Human Capital to Increase Corporate Value
- 146 Diversity & Inclusion
- 149 Gaining & Shaping a Population of Diverse Human Resources
- 160 Initiatives concerning Human Rights

- 165 Meaning of Providing Value to Communities
- 166 Supporting Education for Children to Grow into Next-Generation Leaders
- 168 Education for Sustainable Development (ESD) Projects
- 170 Our Activities Supporting National Trusts
- 172 Challenge for SDGs!
- 178 SuMi TRUST Bank "With You" Activities Carried Out across Japan
- 184 Initiatives at Overseas Branches and Group Companies

- 195 GRI Content Index
- 212 Financial Review
- 213 Basic Information of the SuMi Trust Group

